

BALDOR® • RELIANCE 

Product Information Packet

JMFSWDM41906T-E

20HP,3540RPM,3PH,60HZ,256JM,TEFC,F1

| Part Detail | | | | | | | |
|-------------|----|-------------|------------|-------------|--------|---------------|------------|
| Revision: | P | Status: | PRD/A | Change #: | | Proprietary: | No |
| Type: | AC | Elec. Spec: | 39WGY419 | CD Diagram: | CD0005 | Mfg Plant: | |
| Mech. Spec: | | Layout: | 39LYE754 | Poles: | 02 | Created Date: | 12-18-2019 |
| Base: | | Eff. Date: | 12-07-2020 | Leads: | 9#10 | | |

| Specs | | | |
|---------------------------------|--------------------------------|--------------------------------|------------------------|
| Catalog Number: | JMFSWDM41906T-E | Insulation Class: | H |
| Enclosure: | TEFC | Inverter Code: | Inverter Duty |
| Frame: | 256JM | KVA Code: | K |
| Frame Material: | Stainless Steel | Lifting Lugs: | Standard Lifting Lugs |
| Output @ Frequency: | 20.000 HP @ 60 HZ | Locked Bearing Indicator: | Locked Bearing |
| Synchronous Speed @ Frequency: | 3600 RPM @ 60 HZ | Motor Lead Quantity/Wire Size: | 9 @ 10 AWG |
| Voltage @ Frequency: | 460.0 V @ 60 HZ | Motor Lead Termination: | Flying Leads |
| | 230.0 V @ 60 HZ | Motor Type: | 3960M |
| XP Class and Group: | None | Mounting Arrangement: | F1 |
| XP Division: | Not Applicable | Power Factor: | 90 |
| Agency Approvals: | CSA | Product Family: | WD All SS Encapsulated |
| | UR | Pulley End Bearing Type: | Sealed Bearing |
| Auxillary Box: | No Auxillary Box | Pulley Face Code: | C-Face |
| Auxillary Box Lead Termination: | None | Pulley Shaft Indicator: | Standard |
| Base Indicator: | Rigid | Rodent Screen: | None |
| Bearing Grease Type: | POLYREX SHC102 EM (-20F +356F) | RoHS Status: | ROHS COMPLIANT |
| Blower: | None | Shaft Ground Indicator: | No Shaft Grounding |
| Current @ Voltage: | 23.000 A @ 460.0 V | Shaft Rotation: | Reversible |

| | | | |
|---------------------------------------|---------------------------|------------------------------------|---------------------|
| | 46.000 A @ 230.0 V | Shaft Slinger Indicator: | No Slinger |
| Design Code: | A | Speed Code: | Single Speed |
| Drip Cover: | No Drip Cover | Motor Standards: | NEMA |
| Duty Rating: | CONT | Starting Method: | Direct on line |
| Electrically Isolated Bearing: | Not Electrically Isolated | Thermal Device - Bearing: | None |
| Feedback Device: | NO FEEDBACK | Thermal Device - Winding: | None |
| Front Shaft Indicator: | None | Vibration Sensor Indicator: | No Vibration Sensor |
| Heater Indicator: | No Heater | Winding Thermal 1: | None |
| | | Winding Thermal 2: | None |

| | | | | | | | | | | |
|----------------------------|-----------------|--|-------------|-------------|-----------------------|----|--|--------------|-----------|---|
| Nameplate NP1953L01 | | | | | | | | | | |
| CAT.NO. | JMFSWDM41906T-E | | | | | | | | | |
| SPEC. | 39-0000-0236 | | | | | | | | | |
| HP | 20 | | | | | | | | | |
| VOLTS | 230/460 | | | | | | | | | |
| AMPS | 46/23 | | | | | | | | | |
| R.P.M. | 3540 | | | | | | | | | |
| FRAME | 256JM | | | | HZ | 60 | | | PH | 3 |
| SER.F. | 1.00 | | CODE | K | DES. | A | | CLASS | H | |
| NEMA NOM. EFF. | 91 | | | P.F. | 90 | | | | | |
| RATING | 40C AMB-CONT | | | | | | | | | |
| CC | 010A | | | | USABLE AT 208V | | | | | |
| DE | 6309 | | | ODE | 6309 | | | | | |
| ENCL | TEFC | | SN | | | | | | | |
| | 2:1 VT/10:1 VT | | | | | | | | | |

| Parts List | | |
|--------------|--|----------|
| Part Number | Description | Quantity |
| SA377349 | SA 39-0000-0236 | 1.000 EA |
| RA367266 | RA 39-0000-0236 | 1.000 EA |
| WD5603A01 | KIT, CLOSED-END LEAD SPLICE (18-14GA) | 1.000 EA |
| MN416A01 | TAG-INSTAL-MAINT no wire (2100/bx) 4/22 | 1.000 EA |
| 39FH4004A01 | 304 SS FANCOVER SPUN W/SLOTS & MTG(POLIS | 1.000 EA |
| 10XN2520FS08 | HEX HD CAP SCREW 1/4-20 X 1/2 SS FOOD SA | 3.000 EA |
| HW1001S25 | WASHER, 1/4 SPLT LK, STAINLESS STEEL | 3.000 EA |
| 37FN3002C02 | EXFN, PLASTIC, 6.00 OD, 1.503 ID | 1.000 EA |
| HW2502F08 | KEY, 5/16 SQ X .875 303 SS | 1.000 EA |
| 51XB1214S20 | 12-14X1.25 HXWSSLD SERTYB, SS | 1.000 EA |
| MJ1000A107 | GREASE, MOBIL SHC POLYREX 102 EM | 0.080 LB |
| HA3105FS14 | THRUBOLT, 3/8-16 X 17.250 SS FOOD SAFE | 4.000 EA |
| RM1070A78 | O-RING, -012 VITON/FKM .070CS X .364ID | 4.000 EA |
| 39EP1904A02 | FREP ENCL 309 BRG (STAINLESS) POLISHED | 1.000 EA |
| HW4600F81 | 45 X 68 X 10 LIP SEAL, GRAPHITE INFUSED | 1.000 EA |
| HW4600F80 | 45 X 62 X 4.5 AFS SEAL, GRAPHITE INFUSED | 1.000 EA |
| LD7020E09 | LEAD SET, 10AWG, 9 LEAD, 20" LONG LEADS | 1.000 EA |
| HW5100A11 | W3917-042 WVY WSHR (WB) | 1.000 EA |
| HW4500S33 | 1/8 NPT STAINLESS #304 SS PLUG | 3.000 EA |
| HA4002A03 | #304 S.S. DRAIN FITTING, .125 NPT (.44 H | 1.000 EA |
| HA4002A03 | #304 S.S. DRAIN FITTING, .125 NPT (.44 H | 1.000 EA |
| RM1070A80 | O-RING, VITON/FKM .070CS X 10.800ID | 1.000 EA |
| 39EP1905A01 | PUEP ENCL 309 BRG (STAINLESS) POLISHED | 1.000 EA |
| HW4600F80 | 45 X 62 X 4.5 AFS SEAL, GRAPHITE INFUSED | 1.000 EA |

| Parts List (continued) | | |
|-------------------------------|--|-----------------|
| Part Number | Description | Quantity |
| 39CB1001A01 | 39 MID-SECTION, - 3PC. BOX W/5.75-12 THD | 1.000 EA |
| 10XN2520S10 | 1/4-20X 5/8 HEX HD CAP SS | 4.000 EA |
| HW4600F81 | 45 X 68 X 10 LIP SEAL, GRAPHITE INFUSED | 1.000 EA |
| HW4500S33 | 1/8 NPT STAINLESS #304 SS PLUG | 3.000 EA |
| RM1070A80 | O-RING, VITON/FKM .070CS X 10.800ID | 1.000 EA |
| RM1070A79 | O-RING, -051 VITON/FKM .070CS X 5.489ID | 1.000 EA |
| WD1000B16 | T&B CX70TN OR L70P TERMINAL LUG | 1.000 EA |
| 10XN2520S08 | SCREW, 1/4-20 X 1/2 HHCS SS | 1.000 EA |
| 39CB1500A01 | 39 LID, 3 PC. BOX STAINLESS (POLISHED) | 1.000 EA |
| RM1070A79 | O-RING, -051 VITON/FKM .070CS X 5.489ID | 1.000 EA |
| 40PA1000 | PACKAGING GROUP | 1.000 EA |
| HW2502E18 | #303 SS,SQ KEY 1/4 X 2.000 | 1.000 EA |
| MJ5004A93 | FOOD GRADE (H1 RATED) ANTISEIZE THRD COM | 0.005 EA |
| MJ5000A09 | EFI KIT #1578 (400 ML CARTRIDGE OF EFI | 0.031 EA |
| HA5027A07 | 85XU1208S08 FACE DRAIN PINS BAGGED | 1.000 EA |
| FE-0000013 | ZRTG FE ASSEMBLY | 1.000 EA |
| PE-0000003 | ZRTG PE ASSEMBLY | 1.000 EA |

AC Induction Motor Performance Data

Record # 80272

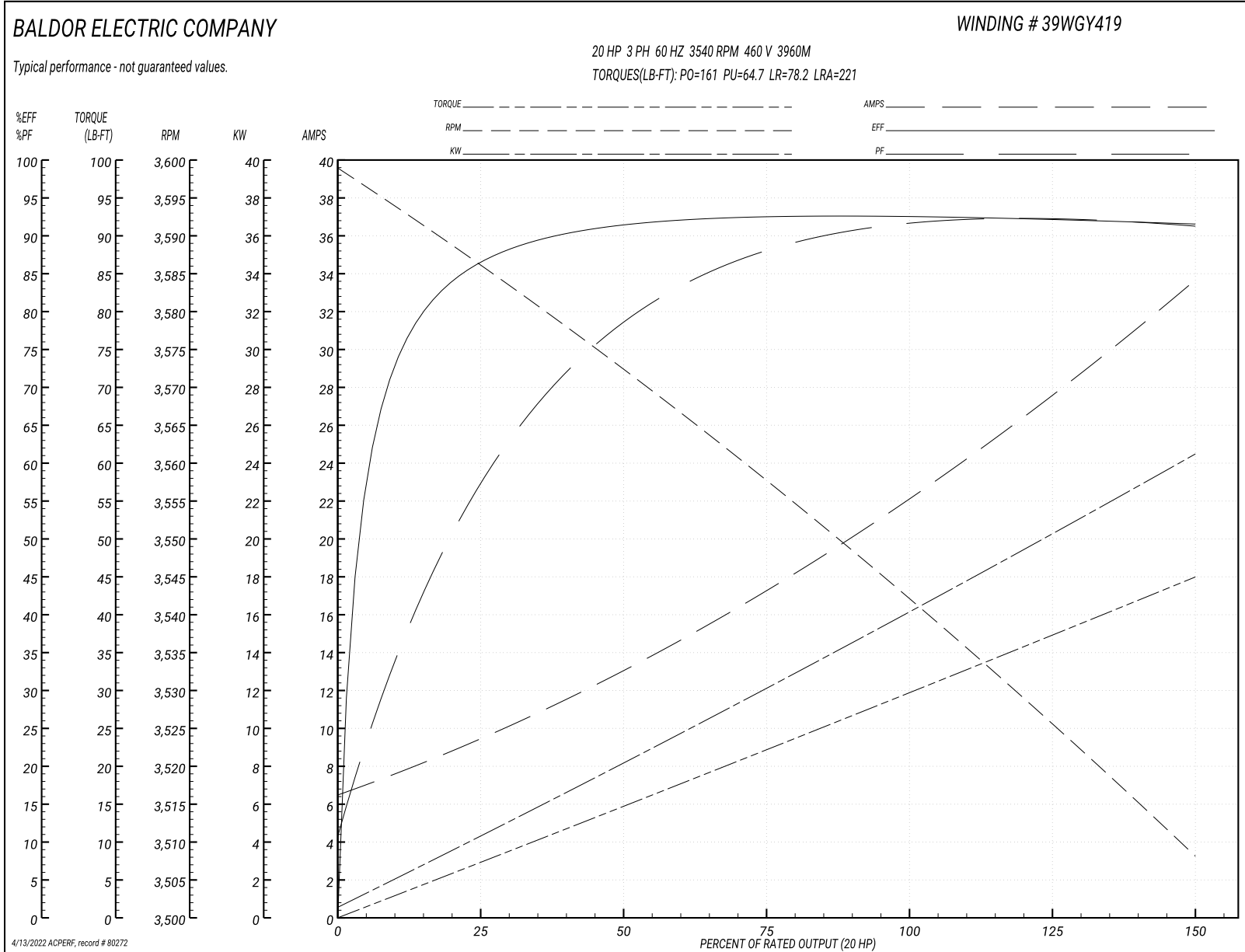
Typical performance - not guaranteed values

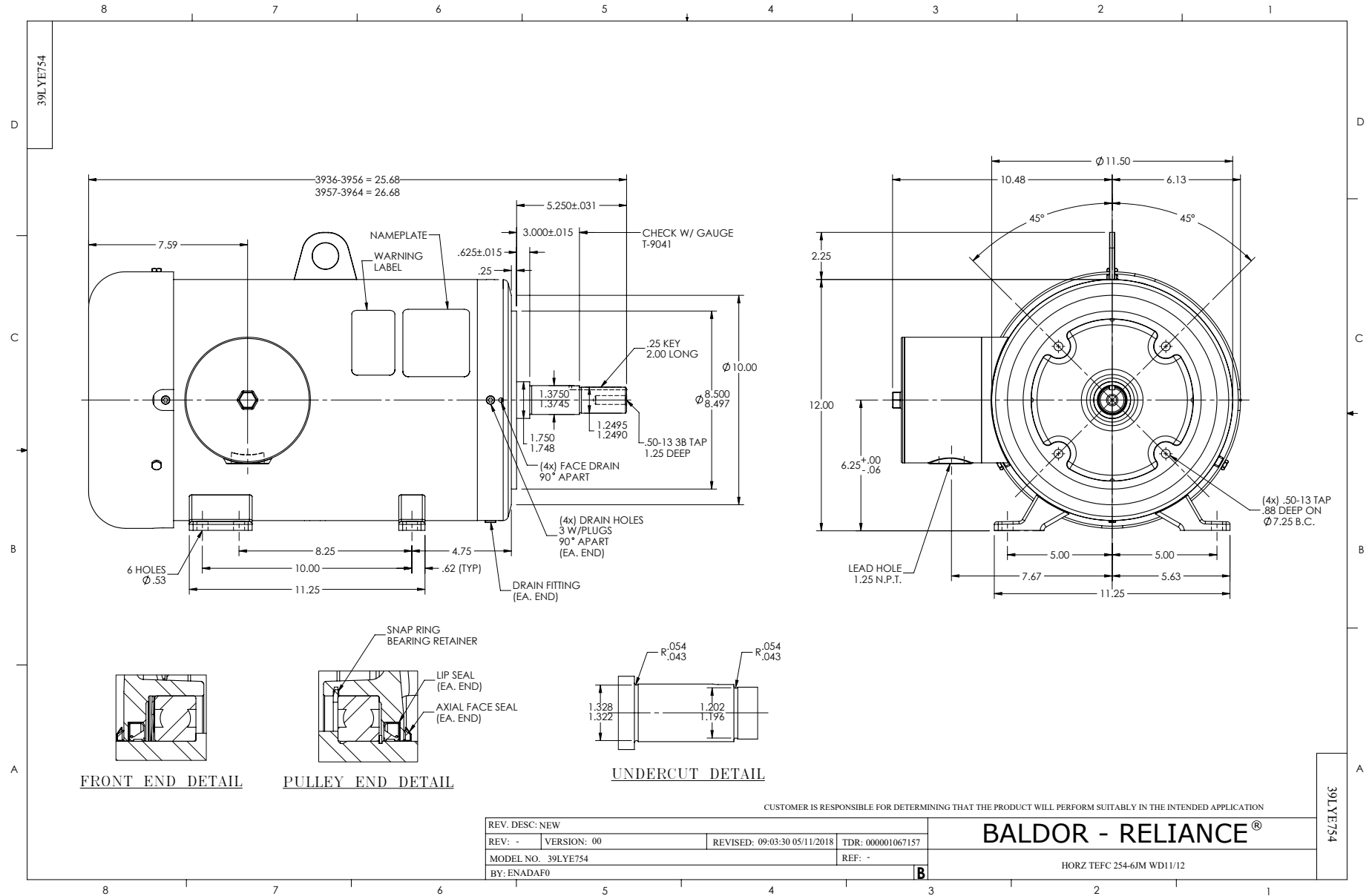
| Winding: 39WGY419-R001 | | Type: 3960M | | Enclosure: TEFC | |
|-------------------------------|------------------------|----------------------------------|--|------------------------|--|
| Nameplate Data | | | 460 V, 60 Hz: High Voltage Connection | | |
| Rated Output (HP) | 20 | Full Load Torque | 29.8 LB-FT | | |
| Volts | 230/460 | Start Configuration | direct on line | | |
| Full Load Amps | 46/23 | Breakdown Torque | 161 LB-FT | | |
| R.P.M. | 3540 | Pull-up Torque | 64.7 LB-FT | | |
| Hz | 60 Phase | 3 | Locked-rotor Torque | 78.2 LB-FT | |
| NEMA Design Code | A KVA Code | K | Starting Current | 221 A | |
| Service Factor (S.F.) | 1 | No-load Current | 6.9 A | | |
| NEMA Nom. Eff. | 91 Power Factor | 90 | Line-line Res. @ 25°C | 0.30935 Ω | |
| Rating - Duty | 40C AMB-CONT | Temp. Rise @ Rated Load | 85°C | | |
| | | Locked-rotor Power Factor | 26.5 | | |

Load Characteristics 460 V, 60 Hz, 20 HP

| % of Rated Load | 25 | 50 | 75 | 100 | 125 | 150 |
|------------------------|-----------|-----------|-----------|------------|------------|------------|
| Power Factor | 61 | 80 | 87 | 90 | 92 | 92 |
| Efficiency | 86.5 | 91.3 | 92.5 | 92.6 | 92.2 | 91.5 |
| Speed | 3585.8 | 3572.3 | 3557.6 | 3541.8 | 3525.6 | 3508.1 |
| Line amperes | 8.97 | 12.8 | 17.5 | 22.5 | 27.8 | 33.4 |

Performance Graph at 460V, 60Hz, 20.0HP Typical performance - Not guaranteed values





CD0005



LOW VOLTAGE
(2Y)



LINE

HIGH VOLTAGE
(1Y)



LINE

NOTES:

1. INTERCHANGE ANY TWO LINE LEADS TO REVERSE ROTATION.
2. OPTIONAL THERMOSTATS ARE PROVIDED WHEN SPECIFIED.
3. ACTUAL NUMBER OF INTERNAL PARALLEL CIRCUITS MAY BE A MULTIPLE OF THOSE SHOWN ABOVE.
4. LEAD COLORS ARE OPTIONAL. LEADS MUST ALWAYS BE NUMBERED AS SHOWN.

REV. DESC: REVISE TO SHOW OPTIONAL COLORS

REV. LTR: E BY: JLP

REVISED: 01/19/99 10:15

TDR: 0171435

90000

FILE: AAA00005140

MDL: -

MTL: -

BALDOR ELECTRIC Co.

3PH, DV, 9 LEADS

CD0005

Marketing maintained PDF of MN416:

<http://www.baldor.com/support/Literature/Load.ashx/MN416?ManNumber=MN416>