

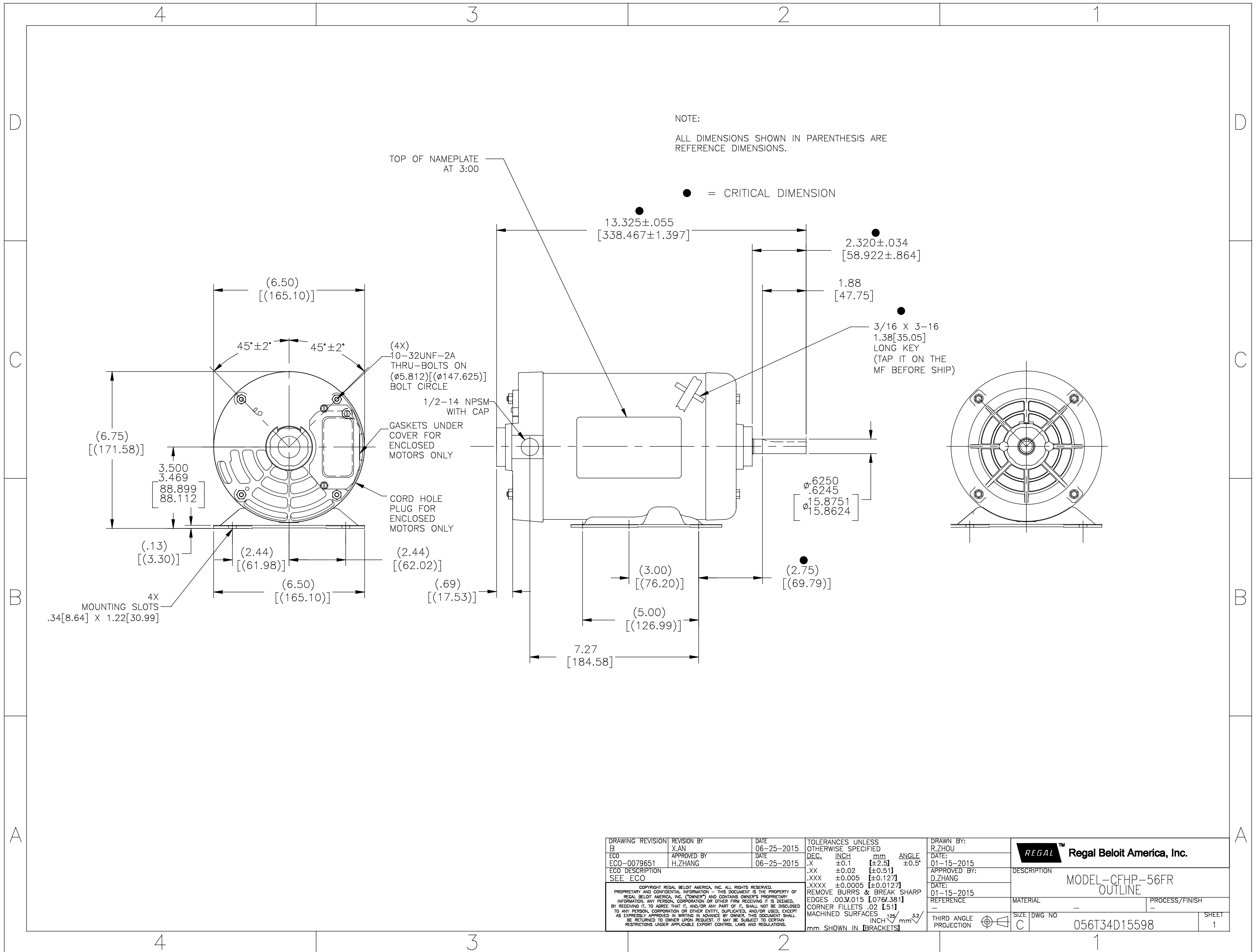
Nameplate Specifications

Output HP	2 Hp	Output KW	1.5 kW
Frequency	60 Hz	Voltage	230/460 V
Current	5.4/2.7 A	Speed	3450 rpm
Service Factor	1.15	Phase	3
Efficiency	85.5 %	Power Factor	78.2
Duty	Continuous	Insulation Class	B
Design Code	B	KVA Code	N
Frame	56H	Enclosure	Drip Proof
Thermal Protection	No Protection	Ambient Temperature	40 °C
Drive End Bearing Size	6203	Opp Drive End Bearing Size	6203
UL	Recognized	CSA	Y
CE	Y	IP Code	22
Number of Speeds	1		

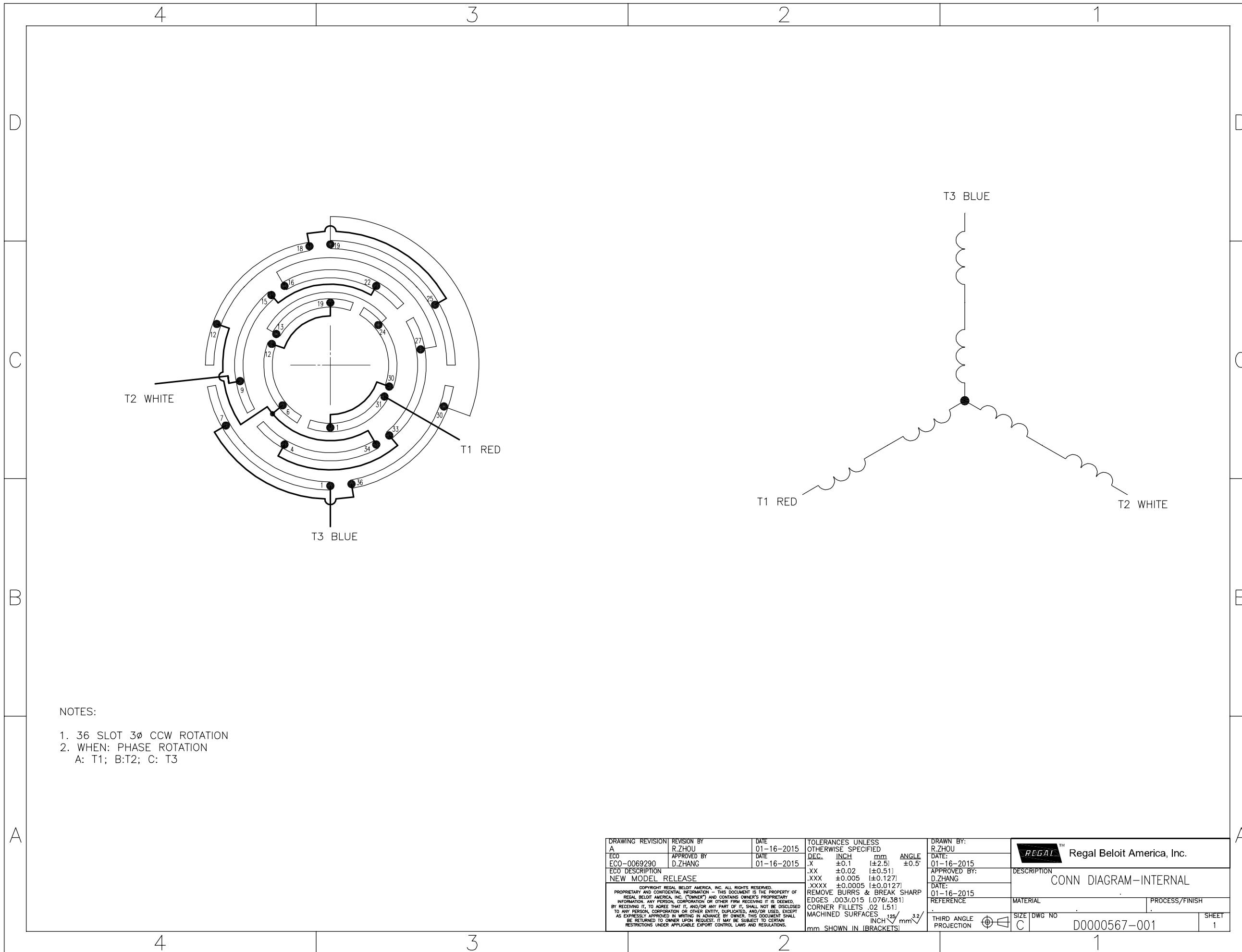
Technical Specifications

Electrical Type	Squirrel Cage Induction Run	Starting Method	Across The Line
Poles	2	Rotation	Reversible
Mounting	Rigid Base	Motor Orientation	Horizontal
Drive End Bearing	Ball	Opp Drive End Bearing	Ball
Frame Material	Rolled Steel	Shaft Type	NEMA 56
Overall Length	13.31 in	Shaft Diameter	0.625 in
Shaft Extension	1.88 in	Assembly/Box Mounting	F1 OUT ODE BRKT RADIAL
Outline Drawing	056T34D15598-S01	Connection Drawing	D0000567-001

This is an uncontrolled document once printed or downloaded and is subject to change without notice. Date Created:09/15/2022



DRAWING REVISION B	REVISION BY X.AN	DATE 06-25-2015	TOLERANCES UNLESS OTHERWISE SPECIFIED	DRAWN BY: R.ZHOU	Regal Beloit America, Inc.
ECO ECO-0079651	APPROVED BY H.ZHANG	DATE 06-25-2015	DEC. INCH mm ANGLE .XX ±0.1 [±2.5] ±0.5° .XX ±0.02 [±0.51] .XXX ±0.005 [±0.127] .XXXX ±0.0005 [±0.0127]	DATE: 01-15-2015	
ECO DESCRIPTION SEE ECO	<small>COPYRIGHT REGAL BELOIT AMERICA, INC. ALL RIGHTS RESERVED. PROPRIETARY AND CONFIDENTIAL INFORMATION - THIS DOCUMENT IS THE PROPERTY OF REGAL BELOIT AMERICA, INC. (OWNERS) AND CONTAINS OWNERS PROPRIETARY INFORMATION. ANY PERSON, CORPORATION OR OTHER FIRM RECEIVING IT IS DEEMED, BY RECEIVING IT, TO AGREE THAT IT, AND/OR ANY PART OF IT, SHALL NOT BE DISCLOSED TO ANY PERSON, CORPORATION OR OTHER ENTITY, DUPLICATED, AND/OR USED, EXCEPT AS EXPRESSLY APPROVED IN WRITING IN ADVANCE BY OWNER. THIS DOCUMENT SHALL BE RETURNED TO OWNER UPON REQUEST. IT MAY BE SUBJECT TO CERTAIN RESTRICTIONS UNDER APPLICABLE EXPORT CONTROL LAWS AND REGULATIONS.</small>		REMOVE BURRS & BREAK SHARP EDGES .003/.015 [0.076/.381] CORNER FILLETS .02 [0.51] MACHINED SURFACES 125/32 mm SHOWN IN [BRACKETS]	APPROVED BY: D.ZHANG	DESCRIPTION MODEL-CFHP-56FR OUTLINE
				DATE: 01-15-2015	MATERIAL
				REFERENCE	PROCESS/FINISH
				THIRD ANGLE PROJECTION	SIZE DWG NO C 056T34D15598
					SHEET 1



- NOTES:
1. 36 SLOT 30° CCW ROTATION
 2. WHEN: PHASE ROTATION
A: T1; B:T2; C: T3

DRAWING REVISION A	REVISION BY R.ZHOU	DATE 01-16-2015	TOLERANCES UNLESS OTHERWISE SPECIFIED		DRAWN BY: R.ZHOU	Regal Beloit America, Inc.	
ECO ECO-0069290	APPROVED BY D.ZHANG	DATE 01-16-2015	DEC.	INCH	mm		ANGLE
ECO DESCRIPTION NEW MODEL RELEASE			.X	±0.1	[±2.5]	±0.5°	
<small>COPYRIGHT REGAL BELOIT AMERICA, INC. ALL RIGHTS RESERVED. PROPRIETARY AND CONFIDENTIAL INFORMATION - THIS DOCUMENT IS THE PROPERTY OF REGAL BELOIT AMERICA, INC. (OWNER) AND CONTAINS OWNER'S PROPRIETARY INFORMATION. ANY PERSON, CORPORATION OR OTHER FIRM RECEIVING IT IS DEEMED, BY RECEIVING IT, TO AGREE THAT IT, AND/OR ANY PART OF IT, SHALL NOT BE DISCLOSED TO ANY PERSON, CORPORATION OR OTHER ENTITY, EXPLICATED, AND/OR USED, EXCEPT AS EXPRESSLY APPROVED IN WRITING IN ADVANCE BY OWNER. THIS DOCUMENT SHALL BE RETURNED TO OWNER UPON REQUEST. IT MAY BE SUBJECT TO CERTAIN RESTRICTIONS UNDER APPLICABLE EXPORT CONTROL LAWS AND REGULATIONS.</small>			.XX	±0.02	[±0.51]		
			.XXX	±0.005	[±0.127]		
			.XXXX	±0.0005	[±0.0127]		
			REMOVE BURRS & BREAK SHARP EDGES .003/.015 [0.076/3.81]			APPROVED BY: D.ZHANG	DESCRIPTION CONN DIAGRAM-INTERNAL
			CORNER FILLETS .02 [1.51]			DATE: 01-16-2015	MATERIAL
			MACHINED SURFACES $\sqrt{.25}$ INCH $\sqrt{.25}$ mm			REFERENCE	PROCESS/FINISH
			mm SHOWN IN [BRACKETS]			THIRD ANGLE PROJECTION	SIZE DWG NO C D0000567-001
						SHEET 1	

EC Declaration of Conformity

The undersigned representing
the manufacturer:

Regal Beloit America
100 East Randolph St.
Wausau, WI 54401

and the authorized representative
established within the Community:

Marathon Electric UK
6F Thistleton Road Ind. Estate
Market Overton
Oakham, Rutland LE15 7PP UK

are committed to providing customers with products that comply with applicable regulations and international protocols to which they are subject, including the requirements of the European Parliament Directive on the Harmonization of the laws relating to electrical equipment designed for use within certain voltage limits (2014/35/EU).

Regal Beloit America declares that the following product(s), to which this declaration relates, are in conformity with the relevant sections of the EC standards listed below.

This statement supersedes any statements previously issued pertaining to the product(s) listed below and is subject to change without notice.

Model No : 056T34D15598

(Model No. may contain prefix and/or suffix characters)

Catalog No : K025A

Rework No : N/A

Directives :

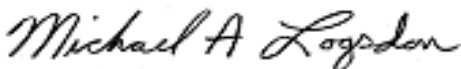
Low Voltage Directive 2014/35/EU

Harmonized Standards Used :

EN 60034-1: 2010 (IEC 60034-1: 2010)

EN 60034-5: 2001/A1:2007 (IEC 60034-5: 2000/A1:2006)

Authorized Representative:



Michael A. Logsdon
Vice President, Technology

Authorized Representative in the Community:



Julian Clark
Marketing Engineer

Created on 09/01/2022

CE 22