

PRODUCT INFORMATION PACKET

Model No: 056T11D15523

Catalog No: K1299A

General Purpose Motor, 0.50 HP, 3 Ph, 60 Hz, 230/460 V, 1200 RPM, 56C Frame, DP



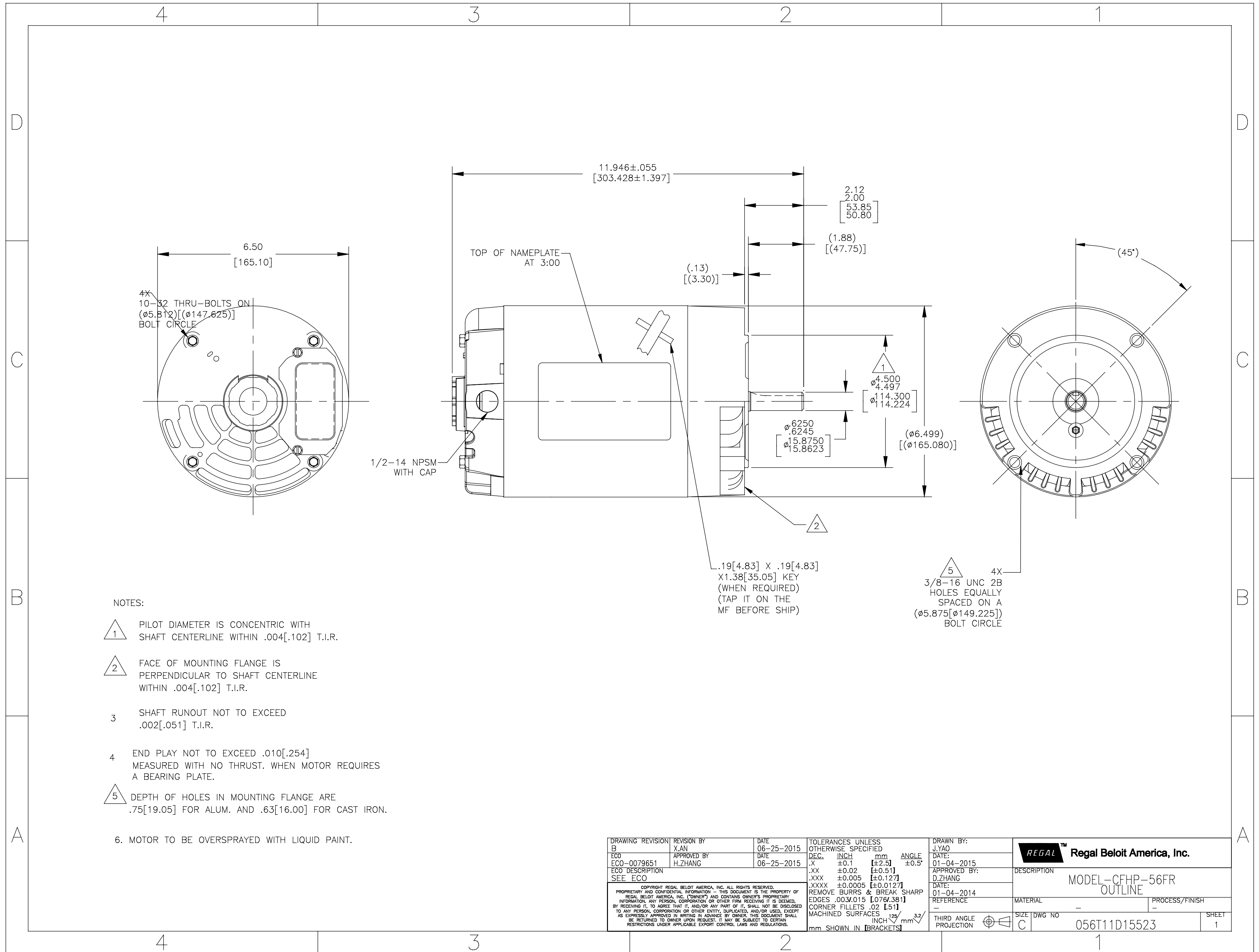
Regal and are trademarks of Regal Rexnord Corporation or one of its affiliated companies.
©2022 Regal Rexnord Corporation, All Rights Reserved. MC017097E

Nameplate Specifications

Output HP	0.50 Hp	Output KW	0.37 kW
Frequency	60 Hz	Voltage	230/460 V
Current	2.8/1.4 A	Speed	1140 rpm
Service Factor	1.25	Phase	3
Efficiency	75.3 %	Power Factor	45.9
Duty	Continuous	Insulation Class	B
Design Code	B	KVA Code	N
Frame	56C	Enclosure	Drip Proof
Thermal Protection	No Protection	Ambient Temperature	40 °C
Drive End Bearing Size	6203	Opp Drive End Bearing Size	6203
UL	Recognized	CSA	Y
CE	Y	IP Code	22
Number of Speeds	1		

Technical Specifications

Electrical Type	Squirrel Cage Induction Run	Starting Method	Across The Line
Poles	6	Rotation	Reversible
Resistance Main	23 Ohms	Mounting	Round
Motor Orientation	Horizontal	Drive End Bearing	Ball
Opp Drive End Bearing	Ball	Frame Material	Rolled Steel
Shaft Type	T	Overall Length	11.94 in
Shaft Diameter	0.625 in	Shaft Extension	1.87 in
Assembly/Box Mounting	F1 ONLY		
Connection Drawing	D0000532-001	Outline Drawing	056T11D15523-S01



NOTES:

- 1 PILOT DIAMETER IS CONCENTRIC WITH SHAFT CENTERLINE WITHIN .004[.102] T.I.R.
 - 2 FACE OF MOUNTING FLANGE IS PERPENDICULAR TO SHAFT CENTERLINE WITHIN .004[.102] T.I.R.
 - 3 SHAFT RUNOUT NOT TO EXCEED .002[.051] T.I.R.
 - 4 END PLAY NOT TO EXCEED .010[.254] MEASURED WITH NO THRUST. WHEN MOTOR REQUIRES A BEARING PLATE.
 - 5 DEPTH OF HOLES IN MOUNTING FLANGE ARE .75[19.05] FOR ALUM. AND .63[16.00] FOR CAST IRON.
6. MOTOR TO BE OVERSPRAYED WITH LIQUID PAINT.

DRAWING REVISION B	REVISION BY X.AN	DATE 06-25-2015	TOLERANCES UNLESS OTHERWISE SPECIFIED DEC. INCH mm ANGLE .XX ±0.1 [±2.5] ±0.5° .XXX ±0.02 [±0.51] .XXXX ±0.005 [±0.127] .XXXX ±0.0005 [±0.0127]	DRAWN BY: J.YAO	Regal Beloit America, Inc.
ECO ECO-0079651	APPROVED BY H.ZHANG	DATE 06-25-2015	REMOVE BURRS & BREAK SHARP EDGES .003/.015 [0.076/.381] CORNER FILLETS .02 [.51] MACHINED SURFACES 125/INCH 3.2/mm SHOWN IN [BRACKETS]	DATE: 01-04-2015	
ECO DESCRIPTION SEE ECO				APPROVED BY: D.ZHANG	DESCRIPTION MODEL-CFHP-56FR OUTLINE
<small>COPYRIGHT REGAL BELOIT AMERICA, INC. ALL RIGHTS RESERVED. PROPRIETARY AND CONFIDENTIAL INFORMATION - THIS DOCUMENT IS THE PROPERTY OF REGAL BELOIT AMERICA, INC. (OWNERS) AND CONTAINS OWNERS PROPRIETARY INFORMATION. ANY PERSON, CORPORATION OR OTHER FIRM RECEIVING IT IS DEEMED, BY RECEIVING IT, TO AGREE THAT IT, AND/OR ANY PART OF IT, SHALL NOT BE DISCLOSED TO ANY PERSON, CORPORATION OR OTHER ENTITY, DUPLICATED, AND/OR USED, EXCEPT AS EXPRESSLY APPROVED IN WRITING IN ADVANCE BY OWNER. THIS DOCUMENT SHALL BE RETURNED TO OWNER UPON REQUEST. IT MAY BE SUBJECT TO CERTAIN RESTRICTIONS UNDER APPLICABLE EXPORT CONTROL LAWS AND REGULATIONS.</small>				DATE: 01-04-2014	MATERIAL -
				REFERENCE -	PROCESS/FINISH -
				THIRD ANGLE PROJECTION	SIZE DWG NO C 056T11D15523
					SHEET 1

4

3

2

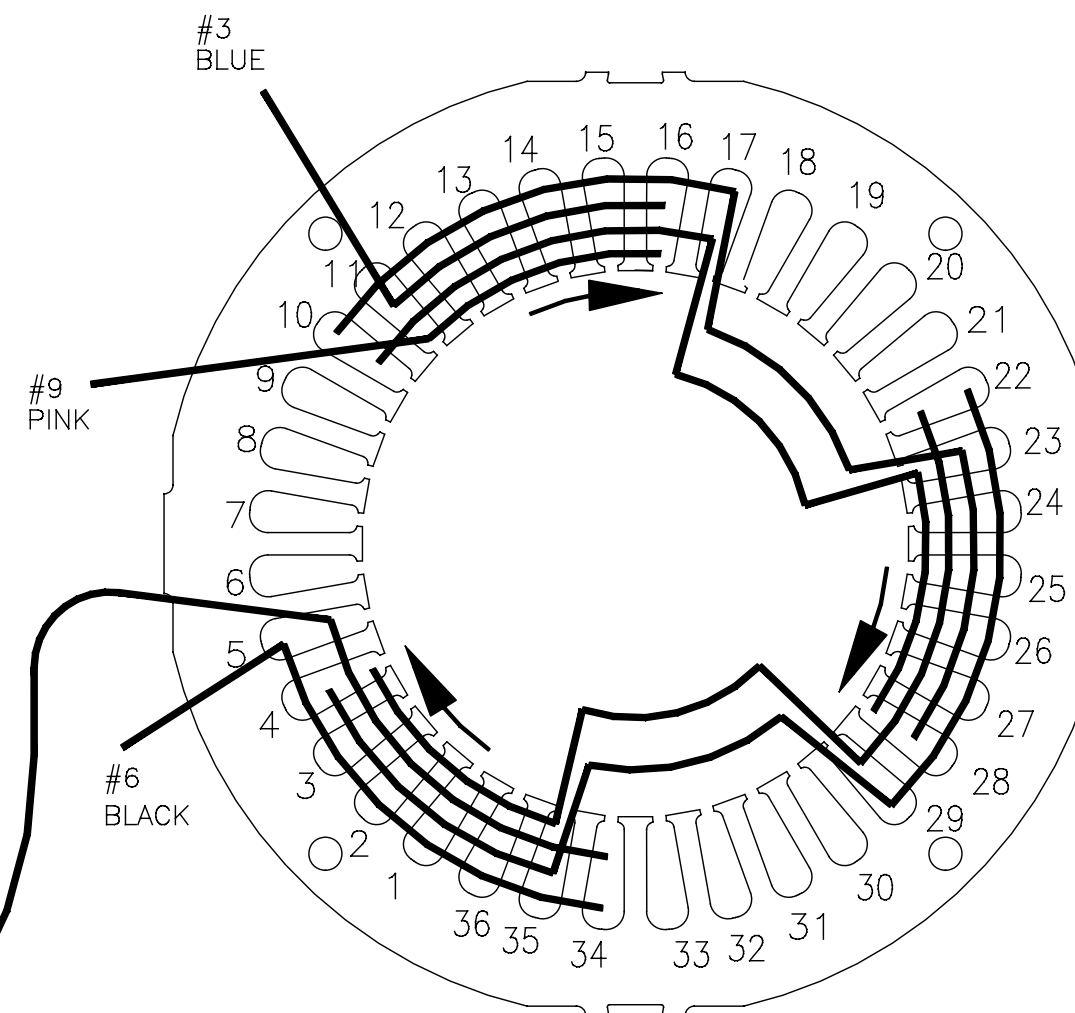
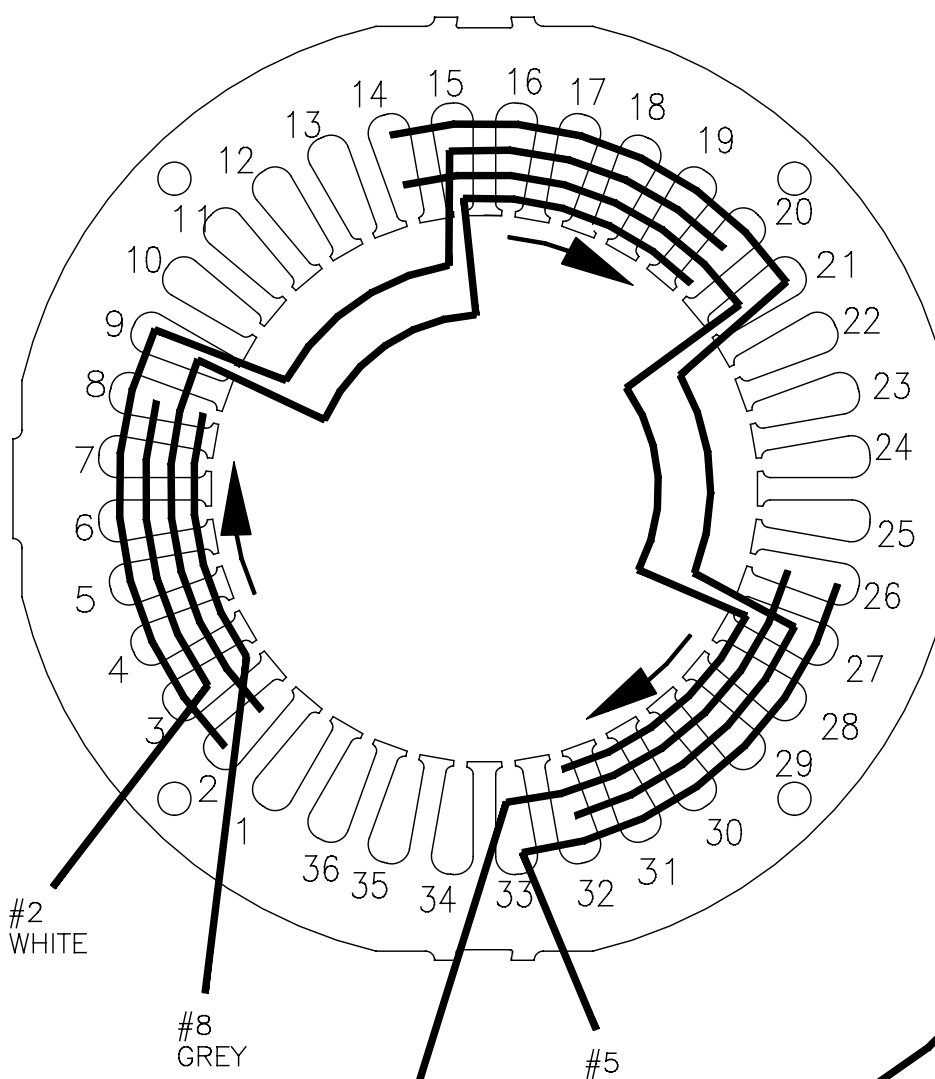
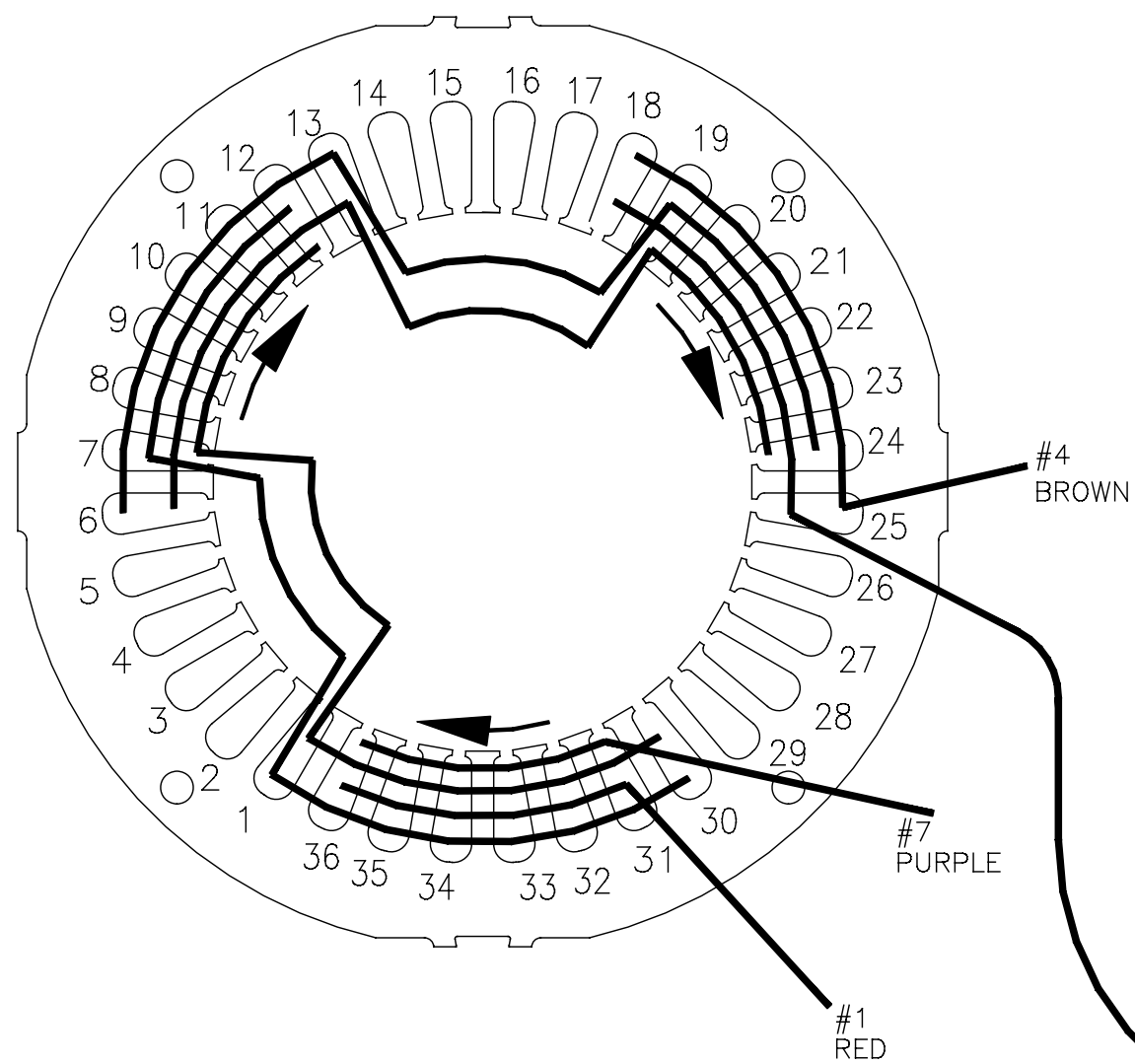
1

ALL POLES ARE WOUND IN REVERSE (CCW) DIRECTION AS VIEWED FROM OUTSIDE OF STATOR.

FIRST INSERTION

SECOND INSERTION

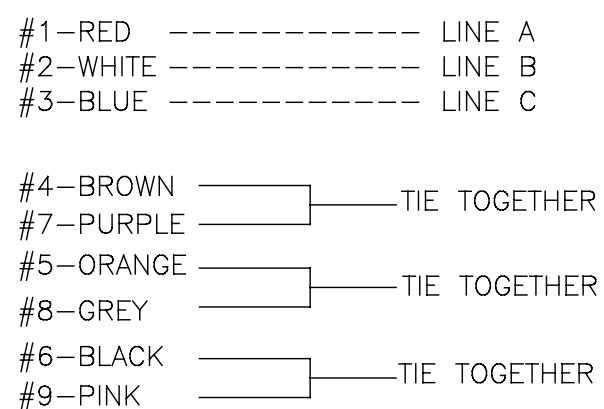
THIRD INSERTION



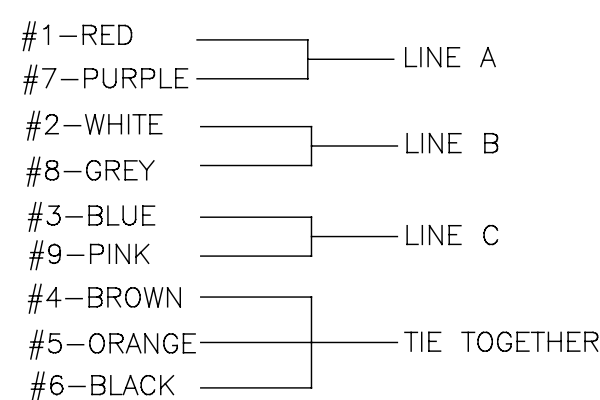
NOTES:

- LEADS MAY BE MULTI-COLORED AS SHOWN FOR GROUP -01 OR SINGLE COLOR FOR GROUP -02. IN EITHER CASE THE NUMBERING SEQUENCE WILL BE THE SAME.
- POWER SUPPLY PHASE SEQUENCE
POWER SUPPLY SHALL BE TESTED WITH A KNOPP INDICATOR TO PROVIDE A PHASE SEQUENCE OF A.B.C.
- ROTATION OF ROTOR VIEWED FROM LEAD END MUST BE COUNTER CLOCKWISE. IF ROTATION IS NOT C.C.W. INTERCHANGETHE FOLLOWING LEADS:
#1-RED WITH #2-WHITE
#4-BROWN WITH #5-ORANGE
#7-PURPLE WITH #8-GREY

HIGH VOLTAGE
CONNECT AS FOLLOWS



LOW VOLTAGE
CONNECT AS FOLLOWS



DRAWING REVISION B	REVISION BY A.BAUGHMAN	DATE 09-30-2015	TOLERANCES UNLESS OTHERWISE SPECIFIED DEC. INCH mm ANGLE .XX ±0.1 [±2.5] ±0.5° .XX ±0.02 [±0.51] .XXX ±0.005 [±0.127] .XXXX ±0.0005 [±0.0127]	DRAWN BY: E.SINECIO	Regal Beloit America, Inc.		
ECO ECO-0086099	APPROVED BY A.BAUGHMAN	DATE 09-30-2015	REMOVE BURRS & BREAK SHARP EDGES .003/.015 [0.076/.381] CORNER FILLETS .02 [51] MACHINED SURFACES 125/ mm 3.2/ INCH mm	DATE: 07-03-2014		DESCRIPTION CONN DIAGRAM-INTERNAL	
SEE ECO	<small>COPYRIGHT REGAL BELOIT AMERICA, INC. ALL RIGHTS RESERVED. PROPRIETARY AND CONFIDENTIAL INFORMATION - THIS DOCUMENT IS THE PROPERTY OF REGAL BELOIT AMERICA, INC. (OWNERS) AND CONTAINS OWNERS PROPRIETARY INFORMATION. ANY PERSON, CORPORATION OR OTHER FIRM RECEIVING IT IS DEEMED, BY RECEIVING IT, TO AGREE THAT IT, AND/OR ANY PART OF IT, SHALL NOT BE DISCLOSED TO ANY PERSON, CORPORATION OR OTHER ENTITY, DUPLICATED, AND/OR USED, EXCEPT AS EXPRESSLY APPROVED IN WRITING IN ADVANCE BY OWNER. THIS DOCUMENT SHALL BE RETURNED TO OWNER UPON REQUEST. IT MAY BE SUBJECT TO CERTAIN RESTRICTIONS UNDER APPLICABLE EXPORT CONTROL LAWS AND REGULATIONS.</small>			APPROVED BY: V.GONZALEZ	MATERIAL	PROCESS/FINISH	
				DATE: 07-03-2014	THIRD ANGLE PROJECTION	SIZE DWG NO C D0000532-001	SHEET 1

4

3

2

1

CERTIFICATION DATA SHEET

Model#: 56T11D15523 A
CONN. DIAGRAM: D0000532-001
OUTLINE: 056T11D15523

WINDING#: SS0053914 NONE 3
ASSEMBLY: F1 ONLY

TYPICAL MOTOR PERFORMANCE DATA

HP	KW	SYNC. RPM	F.L. RPM	FRAME	ENCLOSURE	KVA CODE	DESIGN
1/2&1/3	.37&0.25	1200	1140&950	56C	DP	N	B

PH	Hz	VOLTS	FL AMPS	START TYPE	DUTY	INSL	S.F	AMB°C	ELEVATION
3	60/50	230/460#190/ 380	2.8/1.4&2.8/1. 4	ACROSS THE LINE	CONTINUOU S	B3	1.25/1.25	40	3300

FULL LOAD EFF: 75.3	3/4 LOAD EFF: -	1/2 LOAD EFF: -	GTD. EFF	ELEC. TYPE	NO LOAD AMPS
FULL LOAD PF: 45.9	3/4 LOAD PF: -	1/2 LOAD PF: -	72	SQ CAGE IND RUN	/

F.L. TORQUE	LOCKED ROTOR AMPS	L.R. TORQUE	B.D. TORQUE	F.L. RISE°C
36 LB-FT	14.6 / 7.3	117 LB-FT 0	171.5 LB-FT 0	0

SOUND PRESSURE @ 3 FT.	SOUND POWER	ROTOR WK^2	MAX. WK^2	SAFE STALL TIME	STARTS /HOUR	APPROX. MOTOR WGT
0 dBA	10 dBA	0 LB-FT^2	1.5 LB-FT^2	10 SEC.	2	0 LBS.

***** SUPPLEMENTAL INFORMATION *****

DE BRACKET TYPE	ODE BRACKET TYPE	MOUNT TYPE	ORIENTATION	SEVERE DUTY	HAZARDOUS LOCATION	DRIP COVER	SCREENS	PAINT
C-FACE	STANDARD	ROUND	HORIZONTAL	FALSE	NONE	FALSE	NONE	GRAY (ENAMEL)

BEARINGS		GREASE	SHAFT TYPE	SPECIAL DE	SPECIAL ODE	SHAFT MATERIAL	FRAME MATERIAL
DE	OPE						
BALL	BALL	CHEVRON-SRI	T	NONE	NONE	1144 STRESSPROOF (C-223)	ROLLED STEEL
6203	6203						

THERMO-PROTECTORS				THERMISTORS	CONTROL	SPACE /n HEATERS
THERMOSTATS	PROTECTORS	WDG RTDs	BRG RTDs			
NONE	NOT	NONE	NONE	NONE	FALSE	NONE VOLTS

If Inverter equals NONE, contact factory for further information

*
N
O
T
E
S
*

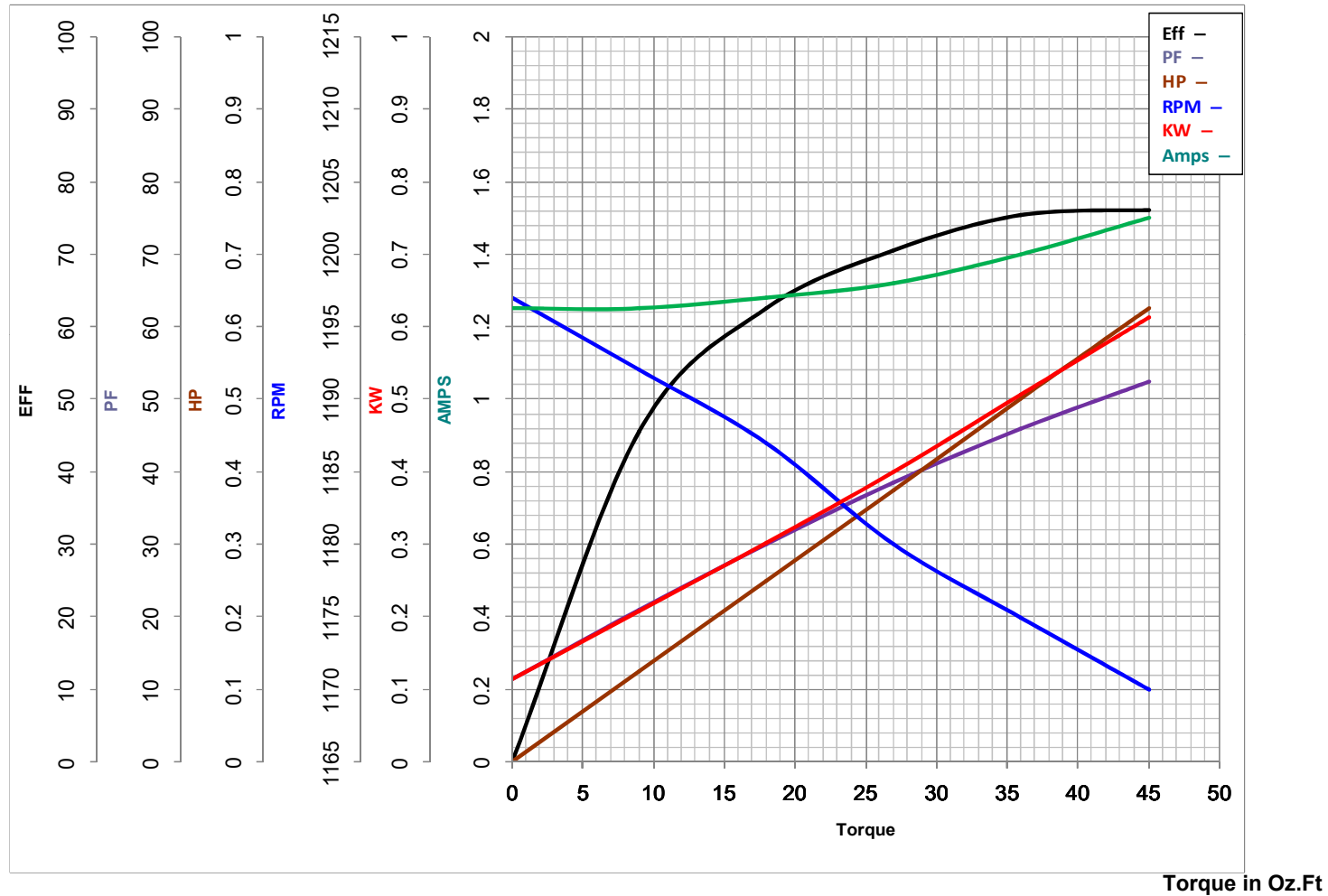
INVERTER TORQUE: NONE
INV. HP SPEED RANGE: NONE
ENCODER: NONE
NONE NONE
NONE NONE PPR
BRAKE: NONE NONE
NONE P/N NONE
NONE NONE
NONE FT-LB NONE V NONE Hz

DATE: 06/28/2017 02:26:59 AM
 FORM 3531 REV.3 02/07/99
 ** Subject to change without notice.



MARATHON ELECTRIC CORPORATION
TYPICAL PERFORMANCE CURVE for AC MOTOR

Customer _____ Curve at 460 Volts HP 0.5&0.33 PHASE 3
 Model No 56T11D15523 60 HZ
0.5 HP VOLTS 230/460&190/380
 Catalog No K1299A HZ 60&50 RPM 1140&950



FL TORQUE	<u>36</u>	Oz.Ft	FL AMPS	<u>2.8/1.4</u>	
BD TORQUE	<u>171.5</u>	Oz.Ft	PU TORQUE	<u>115.0</u>	Oz.Ft
LR TORQUE	<u>117</u>	Oz.Ft	LR AMPS	<u>7.3</u>	
WINDING	SS0053914-3		Date	1/23/2019	

EC Declaration of Conformity

The undersigned representing
the manufacturer:

Regal Beloit America
100 East Randolph St.
Wausau, WI 54401

and the authorized representative
established within the Community:

Marathon Electric UK
6F Thistleton Road Ind. Estate
Market Overton
Oakham, Rutland LE15 7PP UK

are committed to providing customers with products that comply with applicable regulations and international protocols to which they are subject, including the requirements of the European Parliament Directive on the Harmonization of the laws relating to electrical equipment designed for use within certain voltage limits (2014/35/EU).

Regal Beloit America declares that the following product(s), to which this declaration relates, are in conformity with the relevant sections of the EC standards listed below.

This statement supersedes any statements previously issued pertaining to the product(s) listed below and is subject to change without notice.

Model No : 056T11D15523

(Model No. may contain prefix and/or suffix characters)

Catalog No : K1299A

Rework No : N/A

Directives :

Low Voltage Directive 2014/35/EU

Harmonized Standards Used :

EN 60034-1: 2010 (IEC 60034-1: 2010)

EN 60034-5: 2001/A1:2007 (IEC 60034-5: 2000/A1:2006)

Authorized Representative:



Michael A. Logsdon
Vice President, Technology

Authorized Representative in the Community:



Julian Clark
Marketing Engineer

Created on 09/01/2022

CE 22