

PRODUCT INFORMATION PACKET

Model No: 143TTDR16021

Catalog No: K2018A

General Purpose Motor, 1.50 HP, 3 Ph, 60 Hz, 230/460 V, 3600 RPM, 143TC Frame, DP



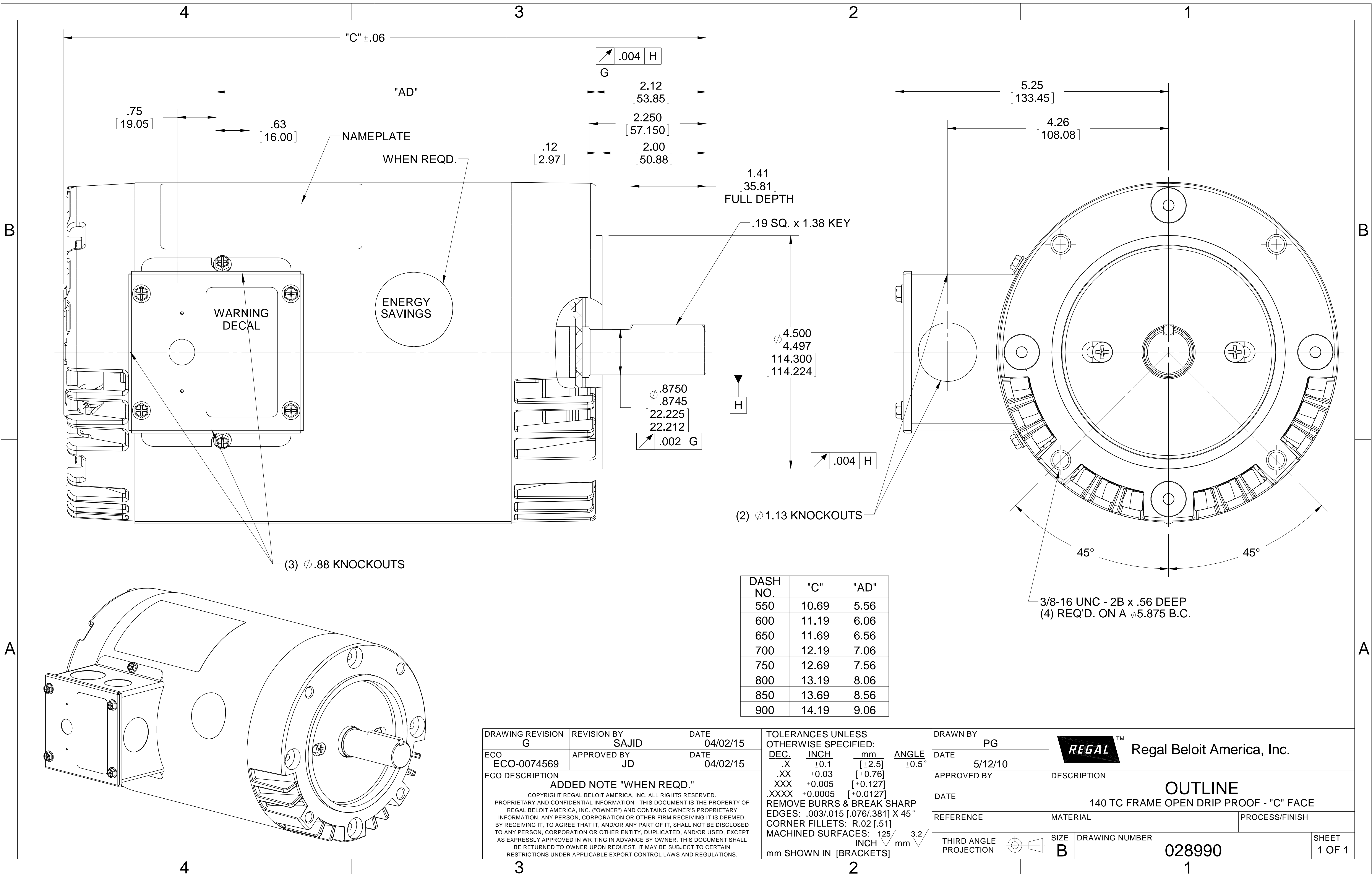
Regal and are trademarks of Regal Rexnord Corporation or one of its affiliated companies.
©2022 Regal Rexnord Corporation, All Rights Reserved. MC017097E

Nameplate Specifications

Output HP	1.50 Hp	Output KW	1.1 kW
Frequency	60 Hz	Voltage	230/460 V
Current	4.0/2.0 A	Speed	3490 rpm
Service Factor	1.15	Phase	3
Efficiency	84 %	Power Factor	82
Duty	Continuous	Insulation Class	B
Design Code	B	KVA Code	M
Frame	143TC	Enclosure	Drip Proof
Thermal Protection	No Protection	Ambient Temperature	40 °C
Drive End Bearing Size	6205	Opp Drive End Bearing Size	6203
UL	Recognized	CSA	Y
CE	Y	IP Code	22
Number of Speeds	1		

Technical Specifications

Electrical Type	Squirrel Cage Induction Run	Starting Method	Across The Line
Poles	2	Rotation	Reversible
Resistance Main	8.5 Ohms	Mounting	Round
Motor Orientation	Horizontal	Drive End Bearing	Ball
Opp Drive End Bearing	Ball	Frame Material	Rolled Steel
Shaft Type	T	Overall Length	12.19 in
Frame Length	7.00 in	Shaft Diameter	0.875 in
Shaft Extension	2.12 in	Assembly/Box Mounting	F1 ONLY
Outline Drawing	028990-700	Connection Drawing	005010.01



"C" ±.06

"AD"

.75
[19.05]

.63
[16.00]

NAMEPLATE

WHEN REQD.

WARNING
DECAL

ENERGY
SAVINGS

.12
[2.97]

.004 H
G

2.12
[53.85]

2.250
[57.150]

2.00
[50.88]

1.41
[35.81]
FULL DEPTH

.19 SQ. x 1.38 KEY

4.500
4.497
[114.300
114.224]

.8750
.8745
22.225
22.212
.002 G

.004 H

(2) Ø 1.13 KNOCKOUTS

(3) Ø .88 KNOCKOUTS

5.25
[133.45]

4.26
[108.08]

45°

45°

3/8-16 UNC - 2B x .56 DEEP
(4) REQ'D. ON A Ø 5.875 B.C.

DASH NO.	"C"	"AD"
550	10.69	5.56
600	11.19	6.06
650	11.69	6.56
700	12.19	7.06
750	12.69	7.56
800	13.19	8.06
850	13.69	8.56
900	14.19	9.06

DRAWING REVISION G	REVISION BY SAJID	DATE 04/02/15
ECO ECO-0074569	APPROVED BY JD	DATE 04/02/15
ECO DESCRIPTION ADDED NOTE "WHEN REQD." COPYRIGHT REGAL BELOIT AMERICA, INC. ALL RIGHTS RESERVED. PROPRIETARY AND CONFIDENTIAL INFORMATION - THIS DOCUMENT IS THE PROPERTY OF REGAL BELOIT AMERICA, INC. ("OWNER") AND CONTAINS OWNER'S PROPRIETARY INFORMATION. ANY PERSON, CORPORATION OR OTHER FIRM RECEIVING IT IS DEEMED, BY RECEIVING IT, TO AGREE THAT IT, AND/OR ANY PART OF IT, SHALL NOT BE DISCLOSED TO ANY PERSON, CORPORATION OR OTHER ENTITY, DUPLICATED, AND/OR USED, EXCEPT AS EXPRESSLY APPROVED IN WRITING IN ADVANCE BY OWNER. THIS DOCUMENT SHALL BE RETURNED TO OWNER UPON REQUEST. IT MAY BE SUBJECT TO CERTAIN RESTRICTIONS UNDER APPLICABLE EXPORT CONTROL LAWS AND REGULATIONS.		

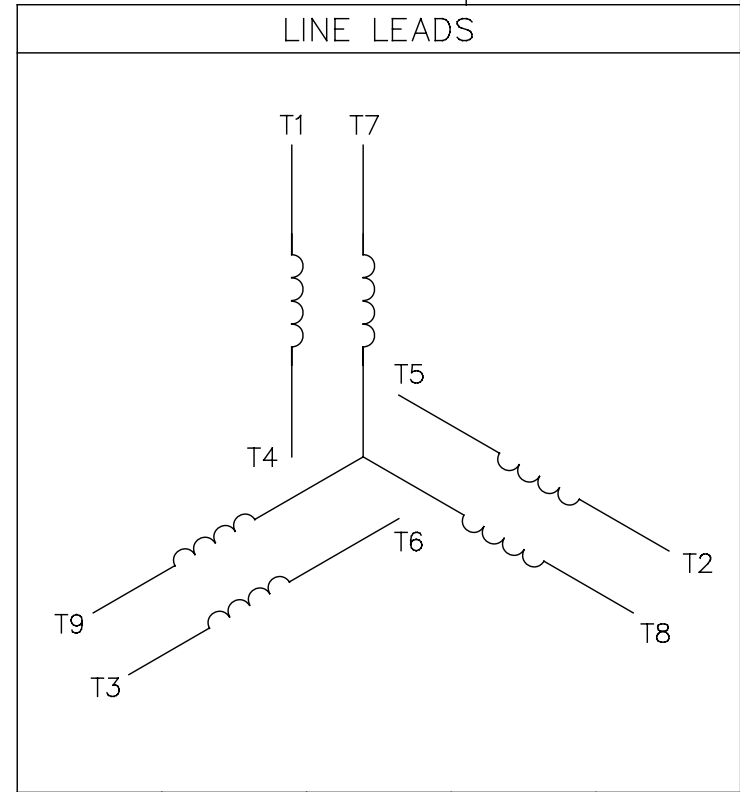
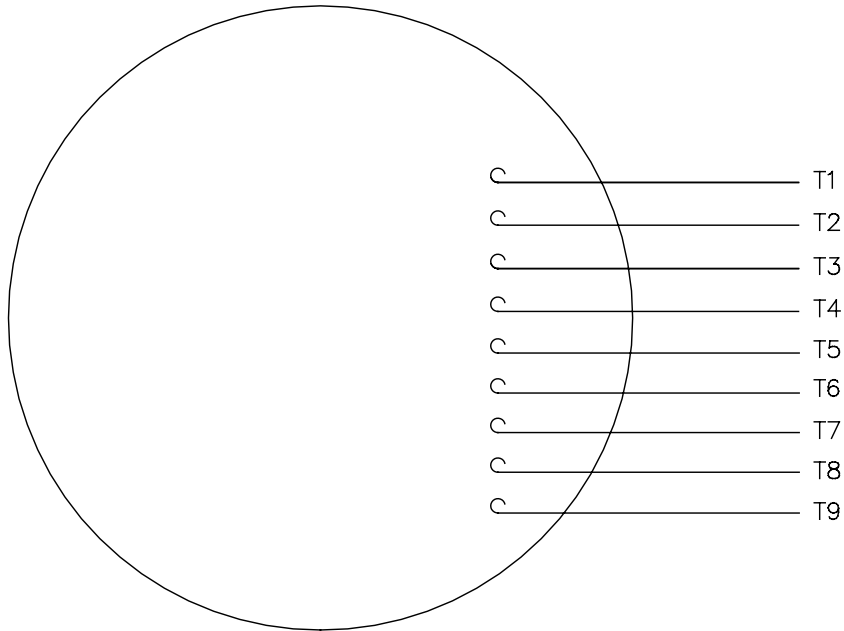
TOLERANCES UNLESS OTHERWISE SPECIFIED:		
DEC.	INCH	mm
.X	±0.1	[±2.5]
.XX	±0.03	[±0.76]
.XXX	±0.005	[±0.127]
.XXXX	±0.0005	[±0.0127]
REMOVE BURRS & BREAK SHARP EDGES: .003/.015 [0.076/.381] X 45°		
CORNER FILLETS: R.02 [.51]		
MACHINED SURFACES: 125 3.2 INCH mm		
mm SHOWN IN [BRACKETS]		

DRAWN BY PG	DATE 5/12/10
APPROVED BY	DATE
REFERENCE	THIRD ANGLE PROJECTION

REGAL ™ Regal Beloit America, Inc.	
DESCRIPTION OUTLINE 140 TC FRAME OPEN DRIP PROOF - "C" FACE	
MATERIAL	PROCESS/FINISH
SIZE B	DRAWING NUMBER 028990
SHEET 1 OF 1	

005010-01

VIEW FROM OUTSIDE OF MOTOR AT SWITCH END.



VOLTAGE	L1	L2	L3	JOIN & INSULATE
HIGH	T1	T2	T3	(T4,T7) (T5,T8) (T6,T9)
LOW	T1,T7	T2,T8	T3,T9	T4,T5,T6

				TOLERANCES UNLESS SPECIFIED		REGAL ™ Regal Beloit America, Inc.		DRAWN RDW 04/12/02				
				DEC.	INCHES			CHK				
				.X	±.1			APPD				
				.XX	±.01			SCALE 1=1				
				.XXX	±.005	TITLE		REF FIG.2-51				
A	UPDATED TO REGAL LOGO			SAJ	06/26/15	AJY	.XXXX	±.0005	MAT'L. DECAL - 004014	FMF		
NO.	REVISION			BY & DATE	CHK	ANG	±1/2"	FINISH	PREV			
THIS DRAWING IN DESIGN AND DETAIL IS OUR PROPERTY AND MUST NOT BE USED EXCEPT IN CONNECTION WITH OUR WORK ALL RIGHTS OF DESIGN AND INVENTION ARE RESERVED THIS IS AN ELECTRONICALLY GENERATED DOCUMENT - DO NOT SCALE THIS PRINT				RFP	04/12/02		CAD FILE	00501001		SIZE	DRAWING NO.	REV.
				DIST	BRF-NLV			A	005010-01		A	



MARATHON ELECTRIC CORPORATION
TYPICAL PERFORMANCE CURVE for AC MOTOR

Customer

Curve at

460

Volts

HP 1.50

PHASE 3

Model No 143TTDR16021

60

HZ

VOLTS 230/460

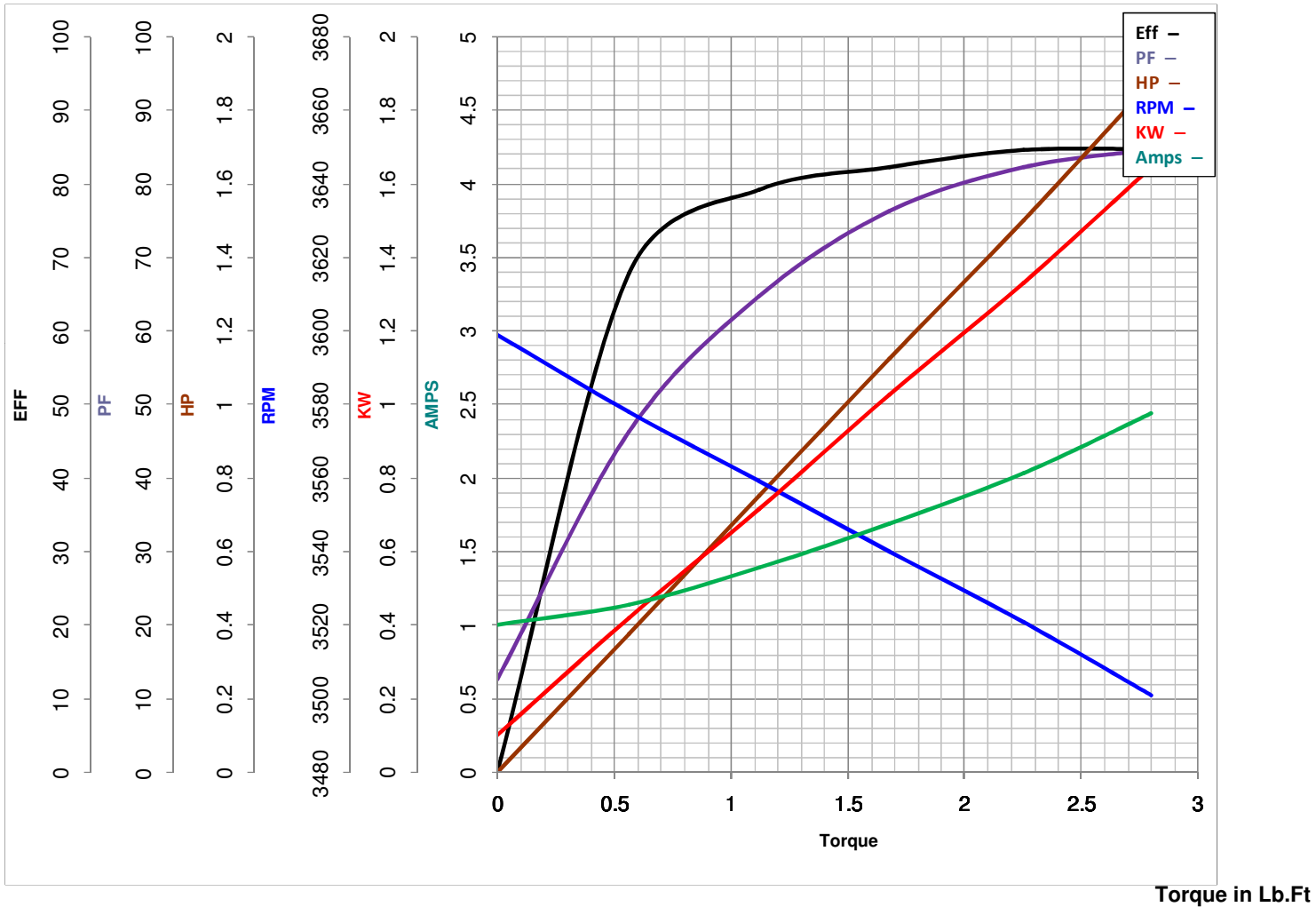
1.5

HP

Catalog No K2018A

HZ 60

RPM 3490



FL TORQUE	<u>2.25</u>	Lb.Ft	FL AMPS	<u>43.557</u>	
BD TORQUE	<u>11.2</u>	Lb.Ft	PU TORQUE	<u>8.5</u>	Lb.Ft
LR TORQUE	<u>8.5</u>	Lb.Ft	LR AMPS	<u>21</u>	
WINDING	T632173-		Date		

EC Declaration of Conformity

The undersigned representing
the manufacturer:

Regal Beloit America
100 East Randolph St.
Wausau, WI 54401

and the authorized representative
established within the Community:

Marathon Electric UK
6F Thistleton Road Ind. Estate
Market Overton
Oakham, Rutland LE15 7PP UK

are committed to providing customers with products that comply with applicable regulations and international protocols to which they are subject, including the requirements of the European Parliament Directive on the Harmonization of the laws relating to electrical equipment designed for use within certain voltage limits (2014/35/EU).

Regal Beloit America declares that the following product(s), to which this declaration relates, are in conformity with the relevant sections of the EC standards listed below.

This statement supersedes any statements previously issued pertaining to the product(s) listed below and is subject to change without notice.

Model No : 143TTDR16021

(Model No. may contain prefix and/or suffix characters)

Catalog No : K2018A

Rework No : N/A

Directives :

Low Voltage Directive 2014/35/EU

Harmonized Standards Used :

EN 60034-1: 2010 (IEC 60034-1: 2010)

EN 60034-5: 2001/A1:2007 (IEC 60034-5: 2000/A1:2006)

Authorized Representative:



Michael A. Logsdon
Vice President, Technology

Authorized Representative in the Community:



Julian Clark
Marketing Engineer

Created on 09/01/2022

CE 22