

**BALDOR® • RELIANCE** 

**Product Information Packet**

**KENM3454**

**.25HP, 1750RPM, 3PH, 60HZ, 56C, 3512M, TENV, F1**

Part Detail							
Revision:	L	Status:	PRD/A	Change #:		Proprietary:	No
Type:	AC	Elec. Spec:	35WGN564	CD Diagram:	CD0005	Mfg Plant:	
Mech. Spec:	35E010	Layout:	35LYE010	Poles:	04	Created Date:	08-22-2012
Base:	N	Eff. Date:	03-28-2018	Leads:	9#18		

Specs			
Catalog Number:	KENM3454	Insulation Class:	F
Enclosure:	TENV	Inverter Code:	Inverter Ready
Frame:	56C	KVA Code:	M
Frame Material:	Steel	Lifting Lugs:	No Lifting Lugs
Output @ Frequency:	.250 HP @ 60 HZ	Locked Bearing Indicator:	Locked Bearing
Synchronous Speed @ Frequency:	1800 RPM @ 60 HZ	Motor Lead Quantity/Wire Size:	9 @ 18 AWG
Voltage @ Frequency:	460.0 V @ 60 HZ	Motor Lead Exit:	Ko Box
	230.0 V @ 60 HZ	Motor Lead Termination:	Flying Leads
XP Class and Group:	None	Motor Type:	3512M
XP Division:	Not Applicable	Mounting Arrangement:	F1
Agency Approvals:	UR	Power Factor:	70
	CSA EEV	Product Family:	General Purpose
	CSA	Pulley End Bearing Type:	Ball
Auxillary Box:	No Auxillary Box	Pulley Face Code:	C-Face
Auxillary Box Lead Termination:	None	Pulley Shaft Indicator:	Standard
Base Indicator:	No Mounting	Rodent Screen:	None
Bearing Grease Type:	Polyrex EM (-20F +300F)	RoHS Status:	ROHS COMPLIANT
Blower:	None	Shaft Extension Location:	Pulley End

<b>Current @ Voltage:</b>	.400 A @ 460.0 V	<b>Shaft Ground Indicator:</b>	No Shaft Grounding
	.800 A @ 208.0 V	<b>Shaft Rotation:</b>	Reversible
	.800 A @ 230.0 V	<b>Shaft Slinger Indicator:</b>	No Slinger
<b>Design Code:</b>	B	<b>Speed Code:</b>	Single Speed
<b>Drip Cover:</b>	No Drip Cover	<b>Motor Standards:</b>	NEMA
<b>Duty Rating:</b>	CONT	<b>Starting Method:</b>	Direct on line
<b>Electrically Isolated Bearing:</b>	Not Electrically Isolated	<b>Thermal Device - Bearing:</b>	None
<b>Feedback Device:</b>	NO FEEDBACK	<b>Thermal Device - Winding:</b>	None
<b>Front Face Code:</b>	Standard	<b>Vibration Sensor Indicator:</b>	No Vibration Sensor
<b>Front Shaft Indicator:</b>	None	<b>Winding Thermal 1:</b>	None
<b>Heater Indicator:</b>	No Heater	<b>Winding Thermal 2:</b>	None

<b>Nameplate NP2116L</b>	
<b>CAT.NO.</b>	KENM3454
<b>SPEC.</b>	35E010N564G1
<b>HP</b>	.25
<b>VOLTS</b>	230/460
<b>AMP</b>	.8/.4
<b>RPM</b>	1750
<b>FRAME</b>	56C
<b>SER.F.</b>	1.15
<b>NEMA-NOM-EFF</b>	80
<b>RATING</b>	40C AMB-CONT
<b>CC</b>	
<b>DE</b>	6205
<b>ENCL</b>	TENV
<b>CODE</b>	M
<b>PF</b>	70
<b>HZ</b>	60
<b>DES</b>	B
<b>CL</b>	F
<b>PH</b>	3
<b>ODE</b>	6203
<b>SN</b>	
<b>USABLE AT 208V</b>	.8

Parts List		
Part Number	Description	Quantity
SA249878	SA 35E010N564G1	1.000 EA
RA236738	RA 35E010N564G1	1.000 EA
NS2512A01	INSULATOR, CONDUIT BOX X	1.000 EA
35CB3007	35 CB CASTING W/.88 DIA. LEAD HOLE	1.000 EA
36GS1000SP	GASKET-CONDUIT BOX, .06 THICK #SV-330 LE	1.000 EA
51XB1016A07	10-16 X 7/16 HXWSSLD SERTYB	2.000 EA
11XW1032G06	10-32 X .38, TAPTITE II, HEX WSHR SLTD U	1.000 EA
35EP3122F00	MASTER ODE,203 BRG,#26 DRN	1.000 EA
HW5100A03	WAVY WASHER (W1543-017)	1.000 EA
35EP3307F00	MASTER DE,205 BRG,.998SH,#26 DRN	1.000 EA
51XN1032A20	10-32 X 1 1/4 HX WS SL SR	2.000 EA
35CB4521GX	CONDUIT BOX LID KIT **ORDER INDIV PARTS	1.000 EA
51XW0832A07	8-32 X .44, TAPTITE II, HEX WSHR SLTD SE	4.000 EA
HA7000A04	KEY RETAINER 0.625 DIA SHAFTS	1.000 EA
85XU0407S04	4X1/4 U DRIVE PIN STAINLESS	2.000 EA
MJ1000A02	GREASE, MOBIL POLYREX EM - 124047	0.050 LB
MG1000Y03	MUNSELL 2.53Y 6.70/ 4.60, GLOSS 20,	0.017 GA
HW2501D13	KEY, 3/16 SQ X 1.375	1.000 EA
HA3100A12	THRUBOLT 10-32 X 7.375	4.000 EA
LC0005E01	CONN.DIA./WARNING LABEL (LC0005/LB1119N)	1.000 EA
NP2116L	ALUM SUPER-E UL CSA CC	1.000 EA
35PA1066	PKG GRP, PRINT PK1008A06	1.000 EA
PK3082	STYROFOAM CRADLE	1.000 EA
MN416A01	TAG-INSTAL-MAINT no wire (2100/bx) 4/22	1.000 EA

<b>Parts List (continued)</b>		
<b>Part Number</b>	<b>Description</b>	<b>Quantity</b>
PE-0000001	ZRTG PE ASSEMBLY	1.000 EA
FE-0000001	ZRTG FE ASSEMBLY	1.000 EA

**AC Induction Motor Performance Data**

Record # 39806

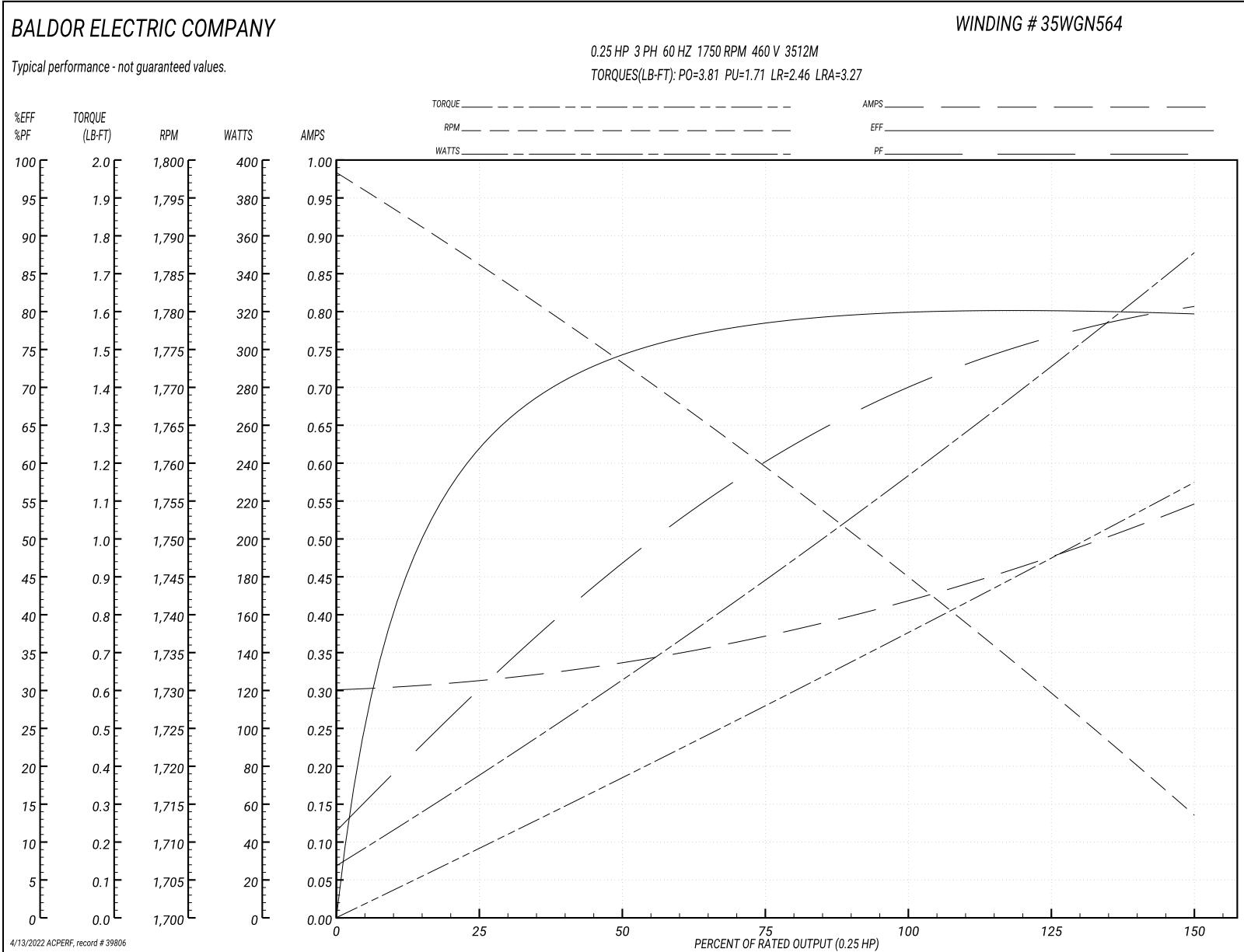
Typical performance - not guaranteed values

<b>Winding:</b> 35WGN564-R001		<b>Type:</b> 3512M		<b>Enclosure:</b> TENV	
<b>Nameplate Data</b>			<b>460 V, 60 Hz: High Voltage Connection</b>		
<b>Rated Output (HP)</b>	.25	<b>Full Load Torque</b>		0.758 LB-FT	
<b>Volts</b>	230/460	<b>Start Configuration</b>		direct on line	
<b>Full Load Amps</b>	.8/.4	<b>Breakdown Torque</b>		3.81 LB-FT	
<b>R.P.M.</b>	1750	<b>Pull-up Torque</b>		1.71 LB-FT	
<b>Hz</b>	60 <b>Phase</b>	3	<b>Locked-rotor Torque</b>		2.46 LB-FT
<b>NEMA Design Code</b>	<b>B KVA Code</b>	M	<b>Starting Current</b>		3.27 A
<b>Service Factor (S.F.)</b>		1.15	<b>No-load Current</b>		0.301 A
<b>NEMA Nom. Eff.</b>	80 <b>Power Factor</b>	70	<b>Line-line Res. @ 25°C</b>		71.8 Ω
<b>Rating - Duty</b>		40C AMB-CONT	<b>Temp. Rise @ Rated Load</b>		30°C
<b>S.F. Amps</b>			<b>Temp. Rise @ S.F. Load</b>		34°C
			<b>Locked-rotor Power Factor</b>		70.9
			<b>Rotor inertia</b>		0.0709 LB-FT <sup>2</sup>

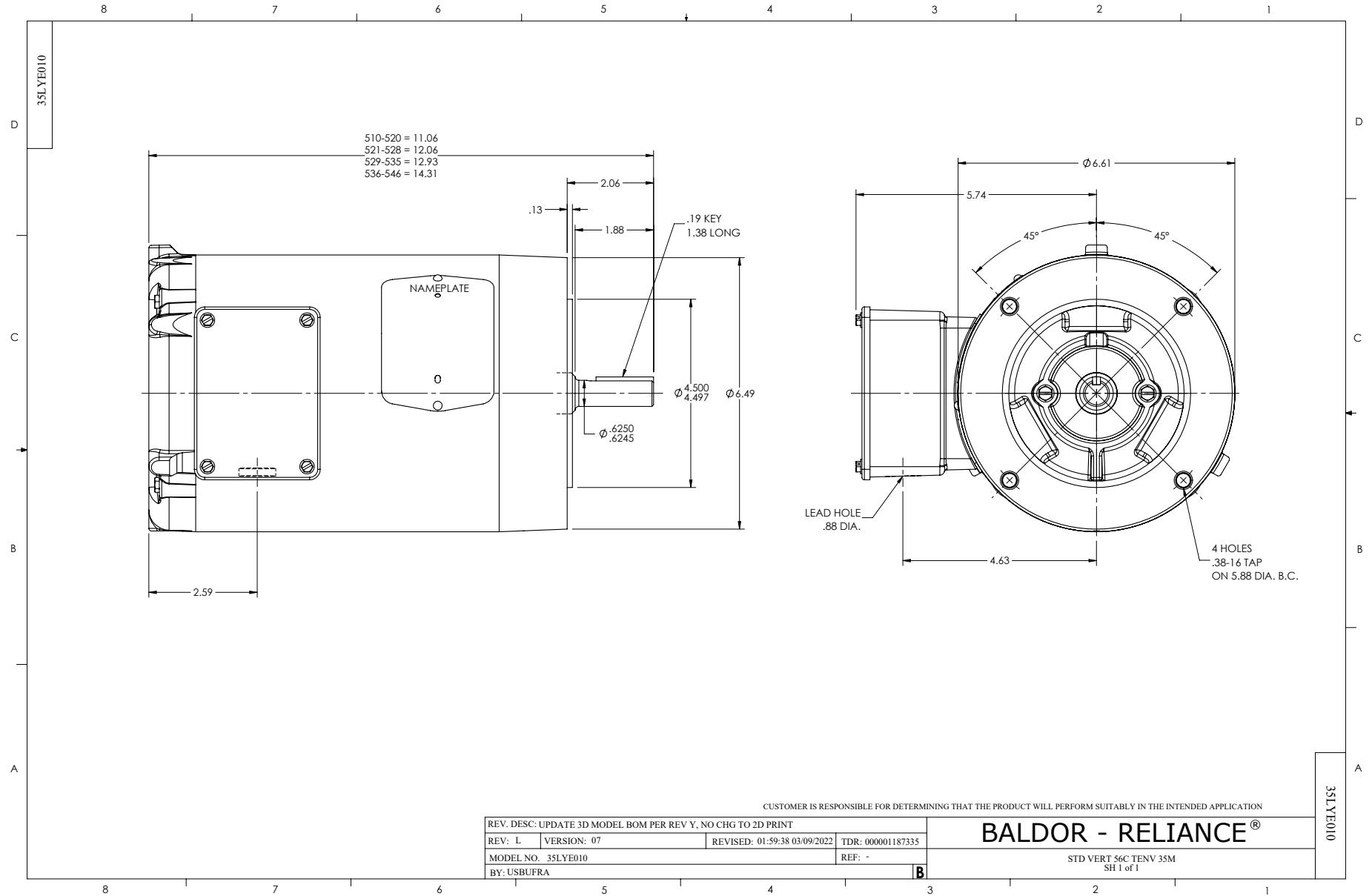
**Load Characteristics 460 V, 60 Hz, 0.25 HP**

<b>% of Rated Load</b>	<b>25</b>	<b>50</b>	<b>75</b>	<b>100</b>	<b>125</b>	<b>150</b>	<b>S.F.</b>
<b>Power Factor</b>	31	47	60	70	77	81	74
<b>Efficiency</b>	61.8	74.4	78.2	80.3	80.4	79.5	80.5
<b>Speed</b>	1785	1773	1759	1745	1730	1713	1752
<b>Line amperes</b>	0.313	0.336	0.376	0.42	0.474	0.548	0.455

Performance Graph at 460V, 60Hz, 0.25HP Typical performance - Not guaranteed values







CD0005



LOW VOLTAGE  
(2Y)



LINE

HIGH VOLTAGE  
(1Y)



LINE

NOTES:

1. INTERCHANGE ANY TWO LINE LEADS TO REVERSE ROTATION.
2. OPTIONAL THERMOSTATS ARE PROVIDED WHEN SPECIFIED.
3. ACTUAL NUMBER OF INTERNAL PARALLEL CIRCUITS MAY BE A MULTIPLE OF THOSE SHOWN ABOVE.
4. LEAD COLORS ARE OPTIONAL. LEADS MUST ALWAYS BE NUMBERED AS SHOWN.

REV. DESC: REVISE TO SHOW OPTIONAL COLORS			
REV. LTR: E	BY: JLP	REVISED: 01/19/99 10:15	TDR: 0171435
90000		FILE: AAA00005140	MDL: -
		MTL: -	

**BALDOR ELECTRIC Co.**

3PH, DV, 9 LEADS

CD0005