

BALDOR® • RELIANCE 

Product Information Packet

KNM3457/35

.33HP,3450RPM,3PH,60HZ,56C,3512M,TENV,F1

Part Detail							
Revision:	M	Status:	PRD/A	Change #:		Proprietary:	No
Type:	AC	Elec. Spec:	35WGT750	CD Diagram:	CD0005	Mfg Plant:	
Mech. Spec:	35E010	Layout:	35LYE010	Poles:	02	Created Date:	01-08-2008
Base:	N	Eff. Date:	06-21-2018	Leads:	9#18		

Specs			
Catalog Number:	KNM3457/35	Insulation Class:	F
Enclosure:	TENV	Inverter Code:	Inverter Ready
Frame:	56C	KVA Code:	M
Frame Material:	Steel	Lifting Lugs:	No Lifting Lugs
Output @ Frequency:	.330 HP @ 60 HZ	Locked Bearing Indicator:	Locked Bearing
Synchronous Speed @ Frequency:	3600 RPM @ 60 HZ	Motor Lead Quantity/Wire Size:	9 @ 18 AWG
Voltage @ Frequency:	460.0 V @ 60 HZ	Motor Lead Termination:	Flying Leads
	230.0 V @ 60 HZ	Motor Type:	3512M
XP Class and Group:	None	Mounting Arrangement:	F1
XP Division:	Not Applicable	Power Factor:	80
Agency Approvals:	UR	Product Family:	General Purpose
	CSA	Pulley End Bearing Type:	Ball
Auxillary Box:	No Auxillary Box	Pulley Face Code:	C-Face
Auxillary Box Lead Termination:	None	Pulley Shaft Indicator:	Standard
Base Indicator:	No Mounting	Rodent Screen:	None
Bearing Grease Type:	Polyrex EM (-20F +300F)	RoHS Status:	ROHS COMPLIANT
Blower:	None	Shaft Ground Indicator:	No Shaft Grounding
Current @ Voltage:	.500 A @ 460.0 V	Shaft Rotation:	Reversible

	1.000 A @ 230.0 V	Shaft Slinger Indicator:	No Slinger
	1.200 A @ 208.0 V	Speed Code:	Single Speed
Design Code:	B	Motor Standards:	NEMA
Drip Cover:	No Drip Cover	Starting Method:	Direct on line
Duty Rating:	CONT	Thermal Device - Bearing:	None
Electrically Isolated Bearing:	Not Electrically Isolated	Thermal Device - Winding:	None
Feedback Device:	NO FEEDBACK	Vibration Sensor Indicator:	No Vibration Sensor
Front Shaft Indicator:	None	Winding Thermal 1:	None
Heater Indicator:	No Heater	Winding Thermal 2:	None

Nameplate NP1256L										
CAT.NO.	KNM3457/35									
SPEC.	35E010T750G2									
HP	.33									
VOLTS	230/460									
AMP	1/5									
RPM	3450									
FRAME	56C				HZ	60			PH	3
SER.F.	1.35		CODE	M	DES	B		CLASS	F	
NEMA-NOM-EFF	78.5		PF	80						
RATING	40C AMB-CONT									
CC								USABLE AT 208V	1.2	
DE	6205				ODE	6203				
ENCL	TENV		SN							
	SFA 1.4/.7									

Parts List		
Part Number	Description	Quantity
SA166776	SA 35E010T750G2	1.000 EA
RA155138	RA 35E010T750G2	1.000 EA
S/P111-000-002	CORONA TEST, SUPER E MOTORS - FT. SMITH	1.000 EA
NS2512A01	INSULATOR, CONDUIT BOX X	1.000 EA
35CB3007	35 CB CASTING W/.88 DIA. LEAD HOLE	1.000 EA
36GS1000SP	GASKET-CONDUIT BOX, .06 THICK #SV-330 LE	1.000 EA
51XB1016A07	10-16 X 7/16 HXWSSLD SERTYB	2.000 EA
11XW1032G06	10-32 X .38, TAPTITE II, HEX WSHR SLTD U	1.000 EA
35EP3122F00	MASTER ODE,203 BRG,#26 DRN	1.000 EA
HW5100A03	WAVY WASHER (W1543-017)	1.000 EA
35EP3307F00	MASTER DE,205 BRG,.998SH,#26 DRN	1.000 EA
51XN1032A20	10-32 X 1 1/4 HX WS SL SR	2.000 EA
35CB4521GX	CONDUIT BOX LID KIT **ORDER INDIV PARTS	1.000 EA
51XW0832A07	8-32 X .44, TAPTITE II, HEX WSHR SLTD SE	4.000 EA
HA7000A04	KEY RETAINER 0.625 DIA SHAFTS	1.000 EA
85XU0407S04	4X1/4 U DRIVE PIN STAINLESS	2.000 EA
MJ1000A02	GREASE, MOBIL POLYREX EM - 124047	0.050 LB
HW2501D13	KEY, 3/16 SQ X 1.375	1.000 EA
MG1000G27	MED CHARCOAL METALLIC GREY 400-0096	0.017 GA
HA3100A12	THRUBOLT 10-32 X 7.375	4.000 EA
LC0005E01	CONN.DIA./WARNING LABEL (LC0005/LB1119N)	1.000 EA
NP1256L	ALUM UL CSA CC INDUSTRIAL MOTOR A60	1.000 EA
35PA1066	PKG GRP, PRINT PK1008A06	1.000 EA
PK3083	STYROFOAM PACKING CRADLE	1.000 EA

Parts List (continued)		
Part Number	Description	Quantity
MN416A01	TAG-INSTAL-MAINT no wire (2100/bx) 4/22	1.000 EA
PK3088	MICROFOAM, 8"X"8 PERF. SHEETS	1.000 EA
FE-0000001	ZRTG FE ASSEMBLY	1.000 EA
PE-0000001	ZRTG PE ASSEMBLY	1.000 EA

AC Induction Motor Performance Data

Record # 36643

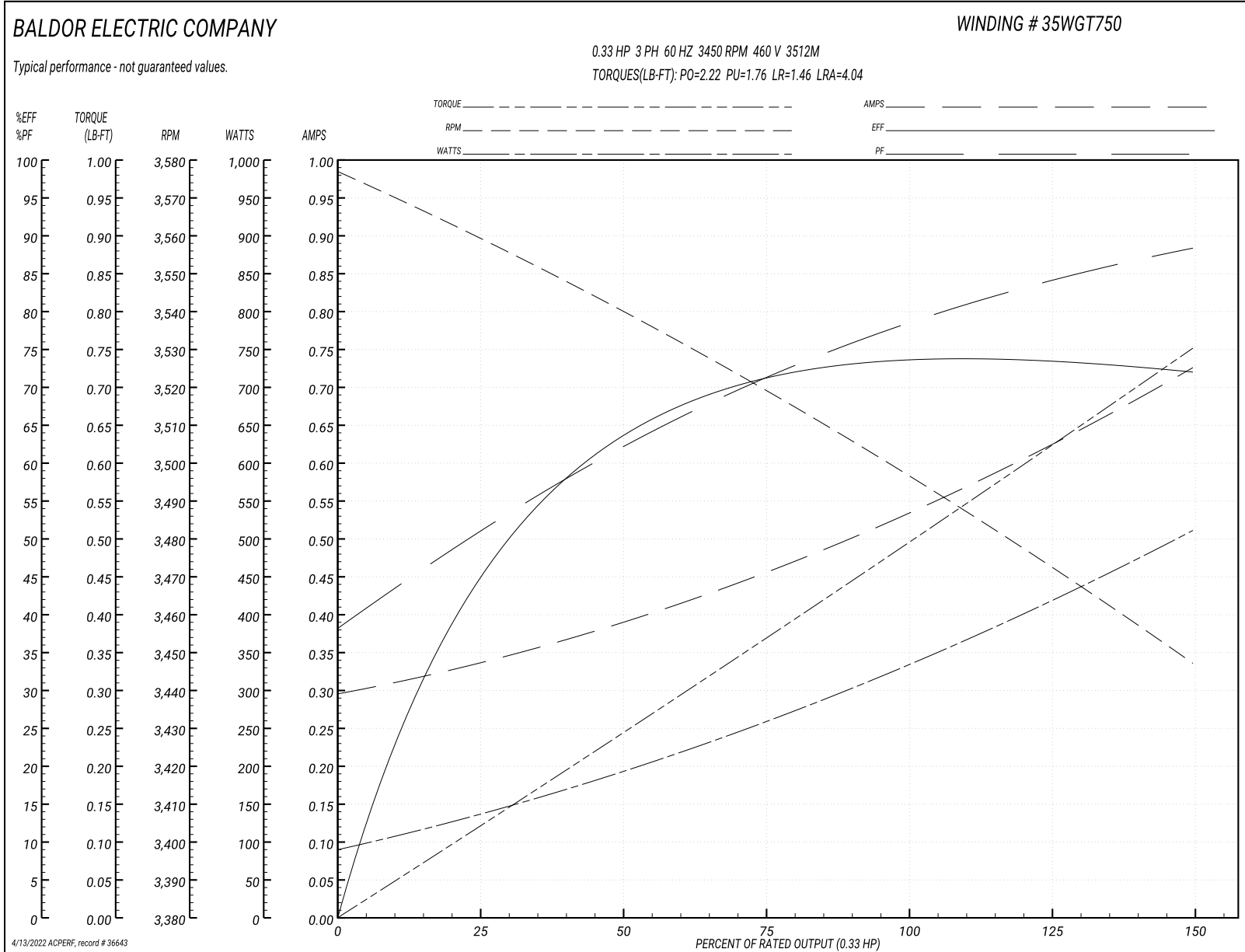
Typical performance - not guaranteed values

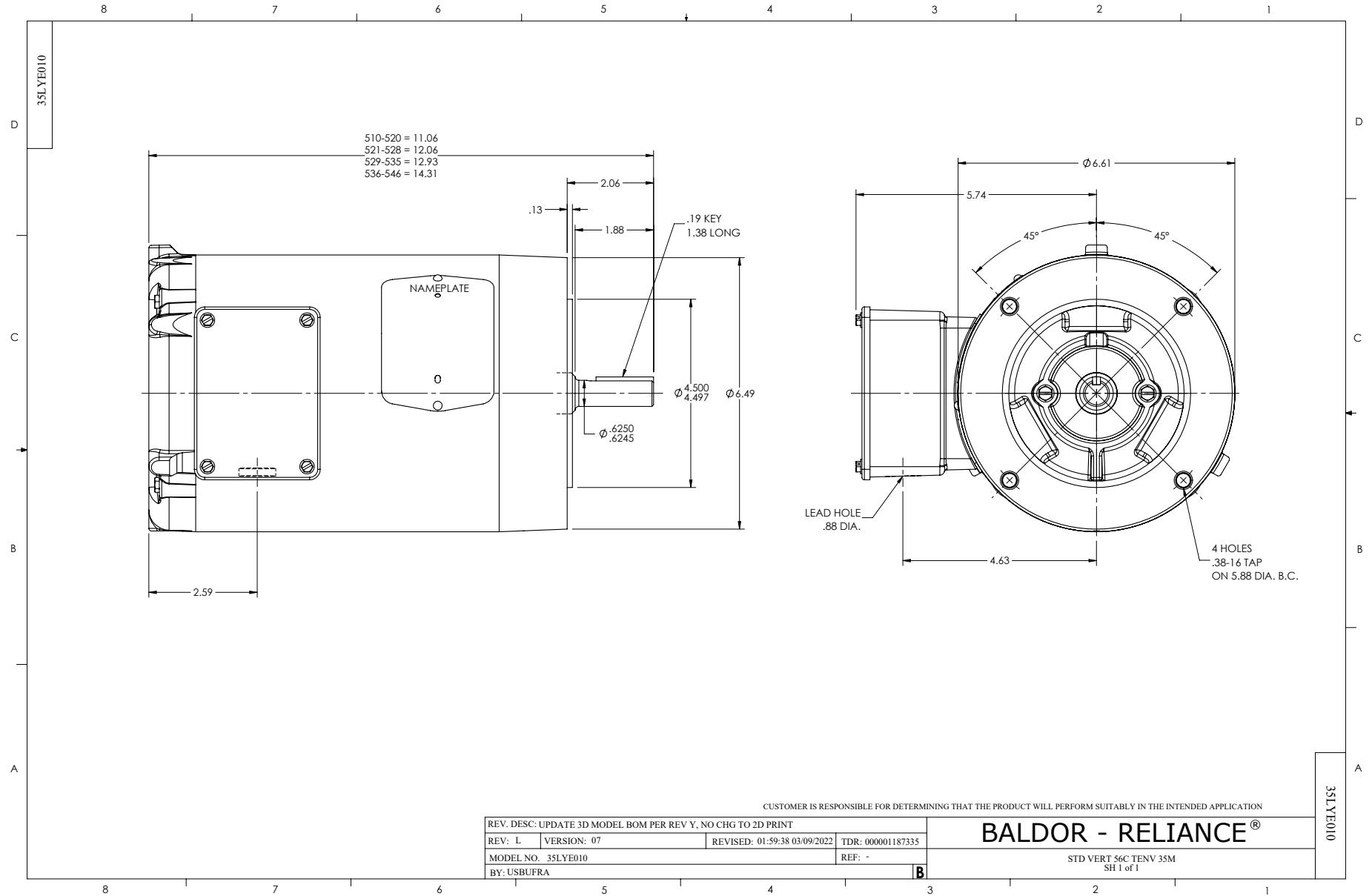
Winding: 35WGT750-R014			Type: 3512M			Enclosure: TENV		
Nameplate Data				460 V, 60 Hz: High Voltage Connection				
Rated Output (HP)			.33	Full Load Torque				0.501 LB-FT
Volts			230/460	Start Configuration				direct on line
Full Load Amps			1/.5	Breakdown Torque				2.22 LB-FT
R.P.M.			3450	Pull-up Torque				1.76 LB-FT
Hz	60 Phase		3	Locked-rotor Torque				1.46 LB-FT
NEMA Design Code	B	KVA Code	M	Starting Current				4.04 A
Service Factor (S.F.)			1.35	No-load Current				0.297 A
NEMA Nom. Eff.	78.5	Power Factor	80	Line-line Res. @ 25°C				49.4 Ω
Rating - Duty			40C AMB-CONT	Temp. Rise @ Rated Load				74°C
S.F. Amps			1.4/.7	Temp. Rise @ S.F. Load				98°C
				Locked-rotor Power Factor				63
				Rotor inertia				0.0332 LB-FT ²

Load Characteristics 460 V, 60 Hz, 0.33 HP

% of Rated Load	25	50	75	100	125	150	S.F.
Power Factor	47	71	70	74	87	88	87
Efficiency	49.8	56.7	73.5	78.3	70.9	72.4	71.7
Speed	3559	3539	3518	3496	3472	3447	3471
Line amperes	0.338	0.388	0.459	0.54	0.631	0.723	0.666

Performance Graph at 460V, 60Hz, 0.33HP Typical performance - Not guaranteed values





CD0005

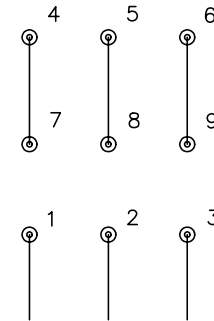


LOW VOLTAGE
(2Y)



LINE

HIGH VOLTAGE
(1Y)



LINE

NOTES:

1. INTERCHANGE ANY TWO LINE LEADS TO REVERSE ROTATION.
2. OPTIONAL THERMOSTATS ARE PROVIDED WHEN SPECIFIED.
3. ACTUAL NUMBER OF INTERNAL PARALLEL CIRCUITS MAY BE A MULTIPLE OF THOSE SHOWN ABOVE.
4. LEAD COLORS ARE OPTIONAL. LEADS MUST ALWAYS BE NUMBERED AS SHOWN.

REV. DESC: REVISE TO SHOW OPTIONAL COLORS			
REV. LTR: E	BY: JLP	REVISED: 01/19/99 10:15	TDR: 0171435
900000		FILE: AAA00005140	MDL: -
		MTL: -	

BALDOR ELECTRIC Co.

3PH, DV, 9 LEADS

CD0005