

PRODUCT INFORMATION PACKET

Model No: LM32677

Catalog No: LM32677

General Purpose Motor, 200 HP, 3 Ph, 60 Hz, 460 V, 1800 RPM, 445TSC Frame, DP



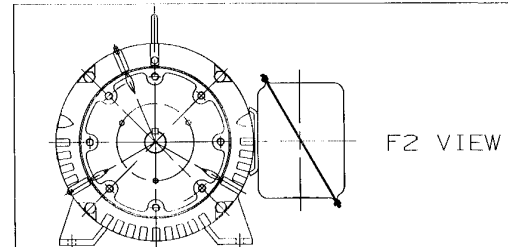
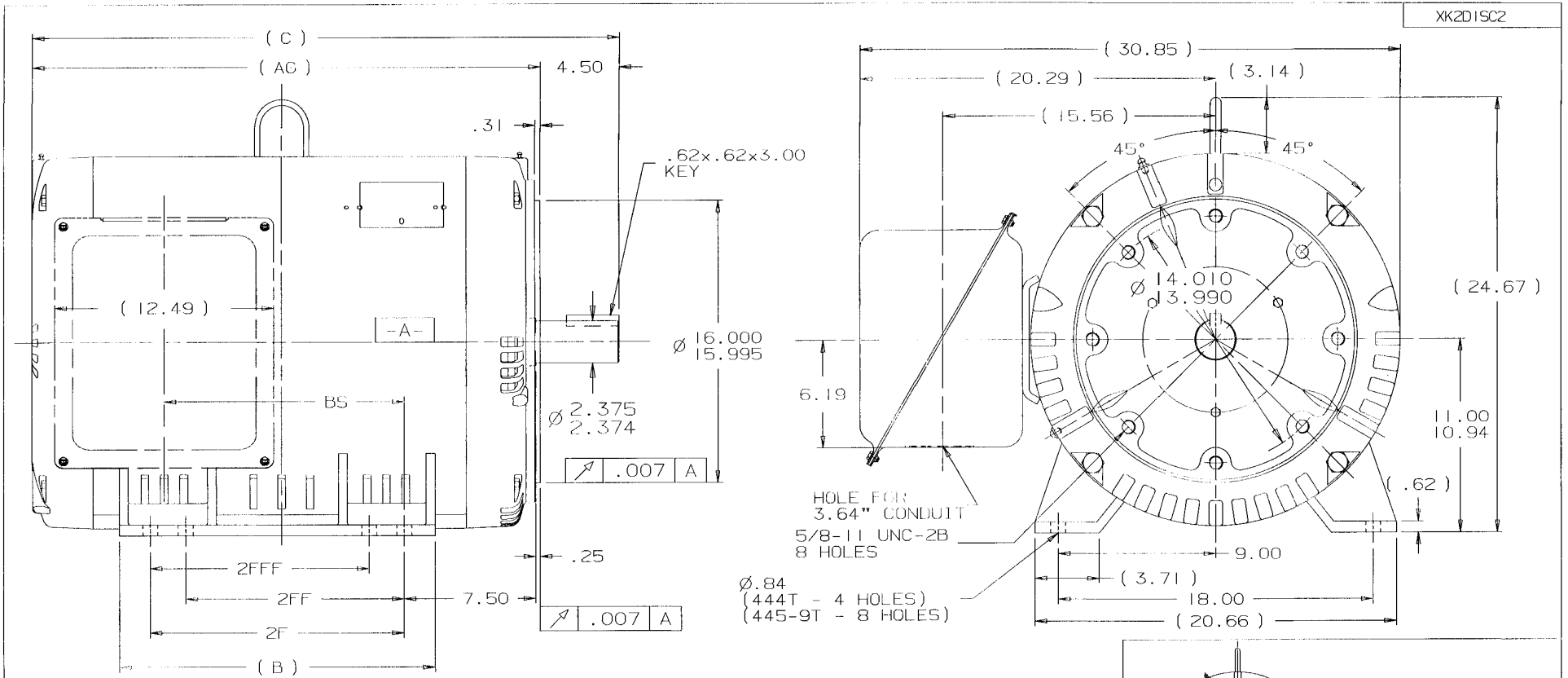
Regal and are trademarks of Regal Rexnord Corporation or one of its affiliated companies.
©2022 Regal Rexnord Corporation, All Rights Reserved. MC017097E

Nameplate Specifications

Output HP	200 Hp	Output KW	149.0 kW
Frequency	60 Hz	Voltage	460 V
Current	233.0 A	Speed	1787 rpm
Service Factor	1.25	Phase	3
Efficiency	96.2 %	Power Factor	83.5
Duty	Continuous	Insulation Class	F
Design Code	BC	KVA Code	G
Frame	445TSC	Enclosure	Drip Proof
Thermal Protection	No Protection	Ambient Temperature	40 °C
Drive End Bearing Size	318	Opp Drive End Bearing Size	315
UL	Recognized	CSA	Y
CE	Y	IP Code	22
Number of Speeds	1		

Technical Specifications

Electrical Type	Squirrel Cage Induction Run	Starting Method	Wye Start Delta Run
Poles	4	Rotation	Reversible
Resistance Main	.018 Ohms	Mounting	Rigid Base
Motor Orientation	Horizontal	Drive End Bearing	Ball
Opp Drive End Bearing	Ball	Frame Material	Rolled Steel
Shaft Type	TS	Overall Length	35.50 in
Frame Length	23.27 in	Shaft Diameter	2.375 in
Shaft Extension	4.75 in	Assembly/Box Mounting	F1 ONLY
Outline Drawing	XK2D1SC2-2327	Connection Drawing	A-EE7340-LN



NOTES:
 1. CONDUIT BOX CAN BE ROTATED IN 90° STEPS.
 2. NAMEPLATES TO BE READ FROM CONDUIT BOX SIDE OF MOTOR.

DASH	FRAME	C	AG	B	2F	2FF	2FFF	BS	REV	DATE	CHANGE	DRS	NAME	PART NAME	OUTLINE	NEMA MOTORS	DRWG NO
2127	444TS	33.50	29.00	18.00	14.50	---	---	13.96	3	10-30-2001	ADDED 447 AND 449 FRAMES MU39294	DRS	DRS	440TS	OPD	UE	XK2D1SC2
2327	445TS	35.50	31.00	20.00	16.50	14.50	14.50	15.96	2	10-28-2001	GEOMETRIC TOLERANCES WERE .004 SHOULD BE .007 CN 29200 3092	DRS	TJB	440TS	OPD	UE	XK2D1SC2
2677	447TS	39.00	34.50	23.50	20.00	16.50	16.50	19.46	1	08-30-2001	NEW DRAWING REPLACES 3XSD122FCSK-1 CN 34258	TJB	DRS	440TS	OPD	UE	XK2D1SC2
3177	449TS	44.00	39.50	28.50	25.00	20.00	20.00	23.71	REV	DATE	CHANGE	DRS	NAME	PART NAME	OUTLINE	NEMA MOTORS	DRWG NO

UNLESS OTHERWISE SPECIFIED DIMENSIONS ARE IN INCHES
 TOL. ON XX+.05 XXX+.005 XXXX+.0005 ANGLES± 7'30"

MAX. SURFACE ROUGHNESS
 UNLESS OTHERWISE NOTED

FINISH

MATERIAL

DRAWN BY TJB 08-09-2001
 CHKD BY ML 08-23-2001
 APPD BY HNH 08-30-2001

PART NAME 440TS OPD UE
 OUTLINE NEMA MOTORS

DISTRIBUTION ~~XX~~ - ~~XX~~ - ~~XX~~ - BY CAD FILE NO. XK2D1SC2

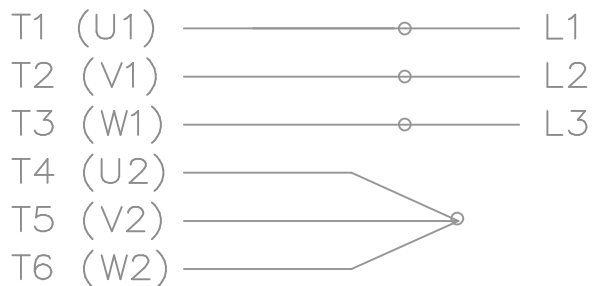
ERROR: syntaxerror
OFFENDING COMMAND: --nostringval--

STACK:

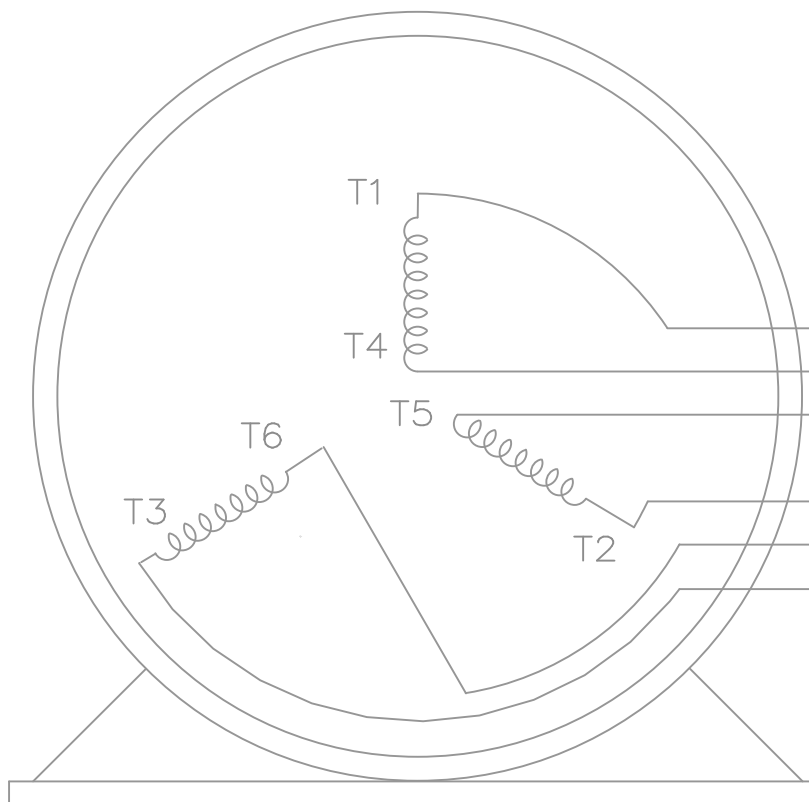
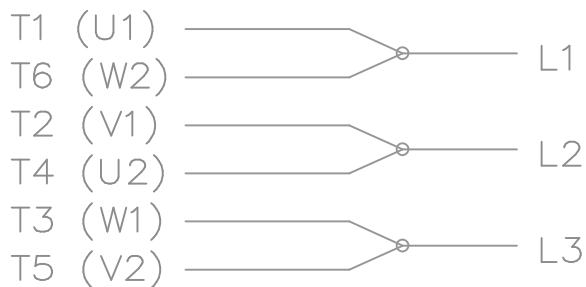
174
/hyphen
173
/logicalnot
172
/guillemotleft
171
/ordfeminine
170
/copyright
169
/dieresis
168
/section
167
/brokenbar
166
/yen
165
/currency
164
/exclamdown
161
/space
160
/Ydieresis
159
/oe
156
/guilsinglright
155
/scaron
154
/trademark
153
/tilde
152
/emdash
151
/endash
150
/bullet
149
/quotedblright
148
/quotedblleft
147
/quoteright
146
/quoteleft
145
/OE
140
/guilsinglleft
139
/Scaron
138
/perthousand
137
/circumflex
136
/daggerdbl
135
/dagger
134
/ellipsis
133
/quotedblbase

THREE PHASE – Y START
Δ RUN MOTOR

START

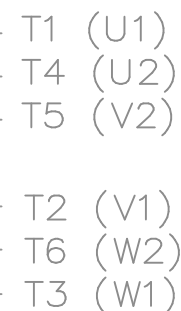


RUN




VIEW OF TERMINAL END

NOTE:
IEC LEAD MARKINGS ARE NOTED
IN PARENTHESES



T6CK
T6BM
T4CC
T2DL
T4C

				TOLERANCES UNLESS SPECIFIED			DRAWN BLR 10-04-1999		
				DEC.	INCHES		CHK DRS 10-04-1999		
				.X	±.1		APPD TB 10-04-1999		
3	REVISED TO MATCH M.E. ORIGINAL	TAT 07-25-2005	ML	.XX	±.02	TITLE CONNECTION DIAGRAM 3Ø – WYE START DELTA RUN	SCALE 1=1		
2	REVISED DRAWING MISTAKE CN 29200-2980	ERH 05-15-2003	ML	.XXX	±.005		REF		
1	NEW DRAWING	BLR 10-09-1999		.XXXX	±.0005	MAT'L.	FMF		
NO.	REVISION	BY & DATE	CHK	ANG	±7'30"	FINISH	PREV		
THIS DRAWING IN DESIGN AND DETAIL IS OUR PROPERTY AND MUST NOT BE USED EXCEPT IN CONNECTION WITH OUR WORK ALL RIGHTS OF DESIGN AND INVENTION ARE RESERVED THIS IS AN ELECTRONICALLY GENERATED DOCUMENT – DO NOT SCALE THIS PRINT				RFP	CAD FILE ee7340_In		SIZE	DRAWING NO. PAGE OF	REV.
				DIST	WA-LB-SB		A	EE7340-LN	3



2100 WASHINGTON ST.
GRAFTON, WI
PH. 262-277-8810

CONN. DIAGRAM: A-EE7340-LN

OUTLINE: XK2D1SC2-2327

CATALOG #: LM32677

WINDING #: L4454031 1

MOUNTING: F1 ONLY

TYPICAL MOTOR PERFORMANCE DATA

HP	kW	SYNC. RPM	F.L. RPM	FRAME	ENCLOSURE	KVA CODE	DESIGN
200&150	149&112	1800	1787&1488	445TSC	DP	G	BC

PH	Hz	VOLTS	AMPS	START TYPE	DUTY	INSL	S.F.	AMB°C
3	60/50	460&380	233&214	WYE START DELTA RUN	CONTINUOUS	F1	1.25/1.0	40

FULL LOAD EFF:	96.2&95.8	3/4 LOAD EFF:	96.2	1/2 LOAD EFF:	95.8	GTD. EFF		ELEC. TYPE
FULL LOAD PF:	83.5&83	3/4 LOAD PF:	81	1/2 LOAD PF:	73.5	95.4		SQ CAGE IND RUN

F.L. TORQUE	LOCKED ROTOR AMPS	L.R. TORQUE	B.D. TORQUE	F.L. RISE°C
588 LB-FT	1450	1250 LB-FT 213 %	1400 LB-FT 238 %	48

SOUND PRESSURE @ 3 FT.	SOUND POWER	ROTOR WK^2	MAX. WK^2	SAFE STALL TIME	STARTS / HOUR	APPROX. MOTOR WGT
- dBA	- dBA	0 LB-FT^2	- LB-FT^2	- SEC.	-	- LBS.

*** SUPPLEMENTAL INFORMATION ***

DE BRACKET TYPE	ODE BRACKET TYPE	MOUNT TYPE	ORIENTATION	SEVERE DUTY	HAZARDOUS LOCATION	DRIP COVER	SCREENS	PAINT
C-FACE	STANDARD	RIGID	HORIZONTAL	FALSE	NONE	FALSE	NONE	GRAY - LINCOLN

BEARINGS		GREASE	SHAFT TYPE	SPECIAL DE	SPECIAL ODE	SHAFT MATERIAL	FRAME MATERIAL
DE	ODE						
BALL	BALL	POLYREX EM	TS	NONE	NONE	1045 HOT ROLLED (C-204)	ROLLED STEEL
318	315						

THERMO-PROTECTORS				THERMISTORS	CONTROL	SPACE HEATERS
THERMOSTATS	PROTECTORS	WDG RTDs	BRG RTDs			
NONE	NOT	NONE	NONE	NONE	FALSE	NONE VOLTS

*
N
O
T
E
S
*

INVERTER TORQUE: NONE
INV. HP SPEED RANGE: NONE
ENCODER: NONE
NONE NONE
NONE NONE PPR
BRAKE: NONE NONE
NONE P/N NONE
NONE NONE
FT-LB V NONE Hz

Data Sheet

Date: 1/19/2018

LM32677



Data @ **460 V**

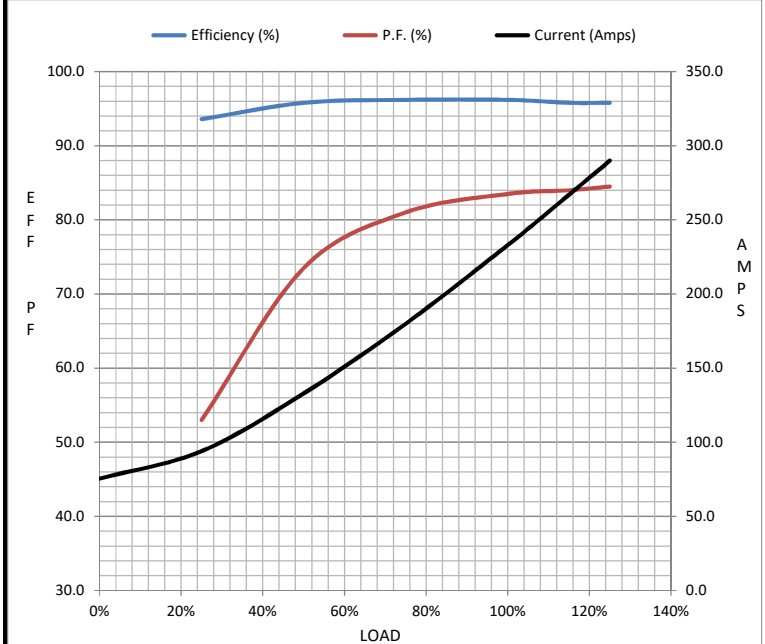
Motor Load Data

Load	0%	25%	50%	75%	100%	115%	125%	LR
Current (Amps)	75.5	94.0	133	180	233	267	290	1,450
Torque (ft-lb)	0.00	146	293	440	588	677	737	1,250
RPM	1800	1797	1795	1790	1787	1,785	1783	0
Efficiency (%)		93.6	95.8	96.2	96.2	95.8	95.8	
P.F. (%)	3.5	53.0	73.5	81.0	83.5	84.0	84.5	30.5

Motor Speed Data

	LR	Pull-Up	BD	Rated	Idle
Speed (RPM)	0	900	1725	1787	1800
Current (Amps)	1,450	1,300	950	233	75.5
Torque (ft-lb)	1,250	1,125	1,400	588	0.00

Information Block				
HP	200.0			
Sync. RPM	1800			
Frame	445			
Enclosure	DP			
Construction	TDR			
Voltage	460#380 V			
Frequency	60 Hz			
Design	A			
LR Code letter	G			
Service Factor	1.15			
Temp Rise @ FL	48 °C			
Duty	CONT			
Ambient	40 °C			
Elevation	1,000 feet			
Rotor/Shaft wk ²	0.00 Lb-Ft ²			
Ref Wdg	L4454031 NONE			
Sound Pressure @ 1M	999 dBA			
VFD Rating	NONE			
Outline Dwg	XK2D1SC2-2327			
Conn. Diag	A-EE7340-LN			
Additional Specifications:				
0				
0				
EQUIV CKT (OHMS / PHASE)				
R1	R2	X1	X2	Xm
0.0140	0.0090	0.1210	0.1480	3.4790



Speed - Torque Curve

