



**GE INDUSTRIAL MOTORS**  
a **WOLONG** company

# Product Technical Information

May 2, 2023

Data shown is for the current revision model #. Ensure your nameplate model # matches.

<b>Model Number:</b>	<b>5KS364BAA201</b>
<b>Catalog Number:</b>	<b>M1002</b>
<b>Instruction Manual:</b>	GEI-56128
<b>Connection Diagram:</b>	GEM2034E-FIG9
<b>Outline Drawing:</b>	239CG201AA

## Accessory Connection Diagrams

<b>Bearing Thermocouple:</b>	None	<b>Heater:</b>	None
<b>RTD:</b>	None	<b>Thermistor:</b>	None
<b>Thermostat:</b>	None	<b>Winding Thermocouple:</b>	None
<b>Bearing RTD:</b>	None		

## Table of Contents

Specification	01
Performance Characteristics	02
Outline Drawing	03
Connection Drawing(s)	04
Spare parts	05

Marks:

<b>MODEL NUMBER:</b>	<b>5KS364BAA201</b>	<b>Estimated Weight:</b>	970 Lbs
<b>Outline Drawing:</b>	239CG201AA	<b>Time Rating:</b>	CONT
<b>Connection Diagram:</b>	GEM2034E-FIG9	<b>Enclosure:</b>	TEFC
<b>Instruction Book:</b>	GEI-56128	<b>Encl Construction:</b>	GP
<b>Design Code:</b>	36BD1188A	<b>Ambient Max(°C):</b>	40
<b>Type:</b>	KS	<b>Alt Ambient Max(°C):</b>	--
<b>Frame:</b>	364TC	<b>Insulation Class:</b>	F
<b>Phases:</b>	3	<b>NEMA Design:</b>	B
<b>Poles:</b>	4	<b>Nominal Efficiency:</b>	95.0 %
<b>Output Power:</b>	60HP 44.4KW	<b>Guaranteed Efficiency:</b>	94.1 %
<b>RPM:</b>	1780	<b>3/4 Load Efficiency:</b>	--
<b>Voltage:</b>	230/460	<b>KVA Code:</b>	G
<b>Hertz:</b>	60	<b>Max KVAR:</b>	20.9
<b>Amps - FL:</b>	143.4/71.7	<b>Power Factor:</b>	82.5
<b>Service Factor:</b>	1.15	<b>Bearing - DE:</b>	6314ZC3
<b>Alt Service Factor:</b>	--	<b>Bearing - ODE:</b>	6213ZC3

Enclosure is Totally Enclosed Fan-Cooled

---

Stamped Nameplate Notes:

VT 0-60 HZ NEMA MG1-31



**Additional Information:**

4P - T EXTN  
C FACE WITH 12.50 RABBIT ON DE  
C/BOX 346 CU IN - 3.00" NPT  
F1 MOUNTING  
INVERTER DUTY PER NEMA MG1 PART 31  
ALTERNATE RATING FOR PWM CONTROL:1.0SF 40C AMBIENT  
VAR TORQUE RANGE 0-60 HZ



**Performance Characteristics**

1st Winding 1st Connection

**Design: 36BD1188A**

**Marks:**

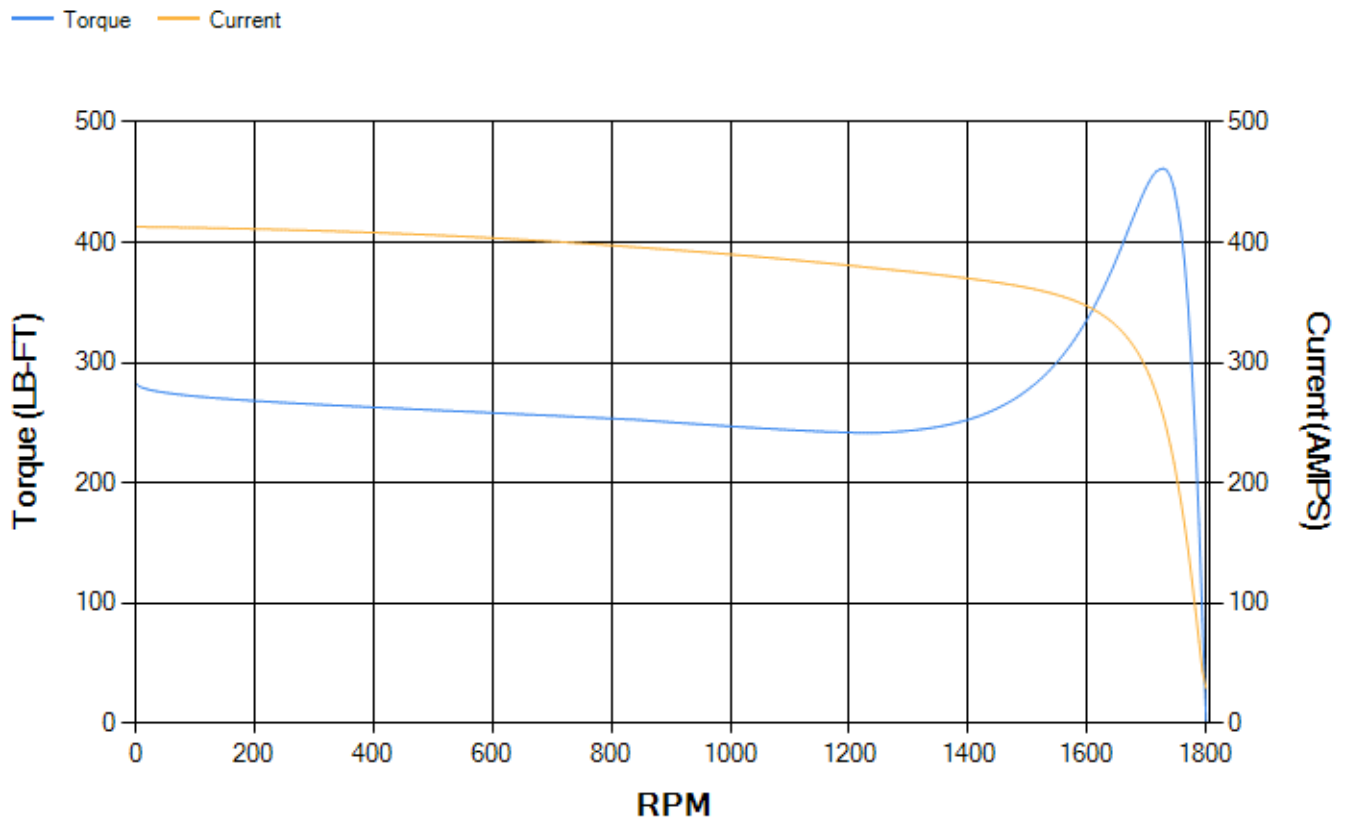
LOAD %	125.0	115.0	100.0	75.0	50.0	25.0	0.0
% EFF	94.37	94.62	95.12	95.18	94.85	92.37	0.00
% PF	84.32	83.76	82.36	77.74	67.51	44.89	3.18
AMPS	88.21	81.49	71.51	56.91	43.85	33.86	29.19

<b>TORQ(FL)#FT</b>	176.81	<b>TORQ(LR)%FL</b>	160.18	<b>TORQ(BD)%FL</b>	260.3
<b>AMPS(LR)</b>	412.91	<b>PF AT START</b>	0.31		

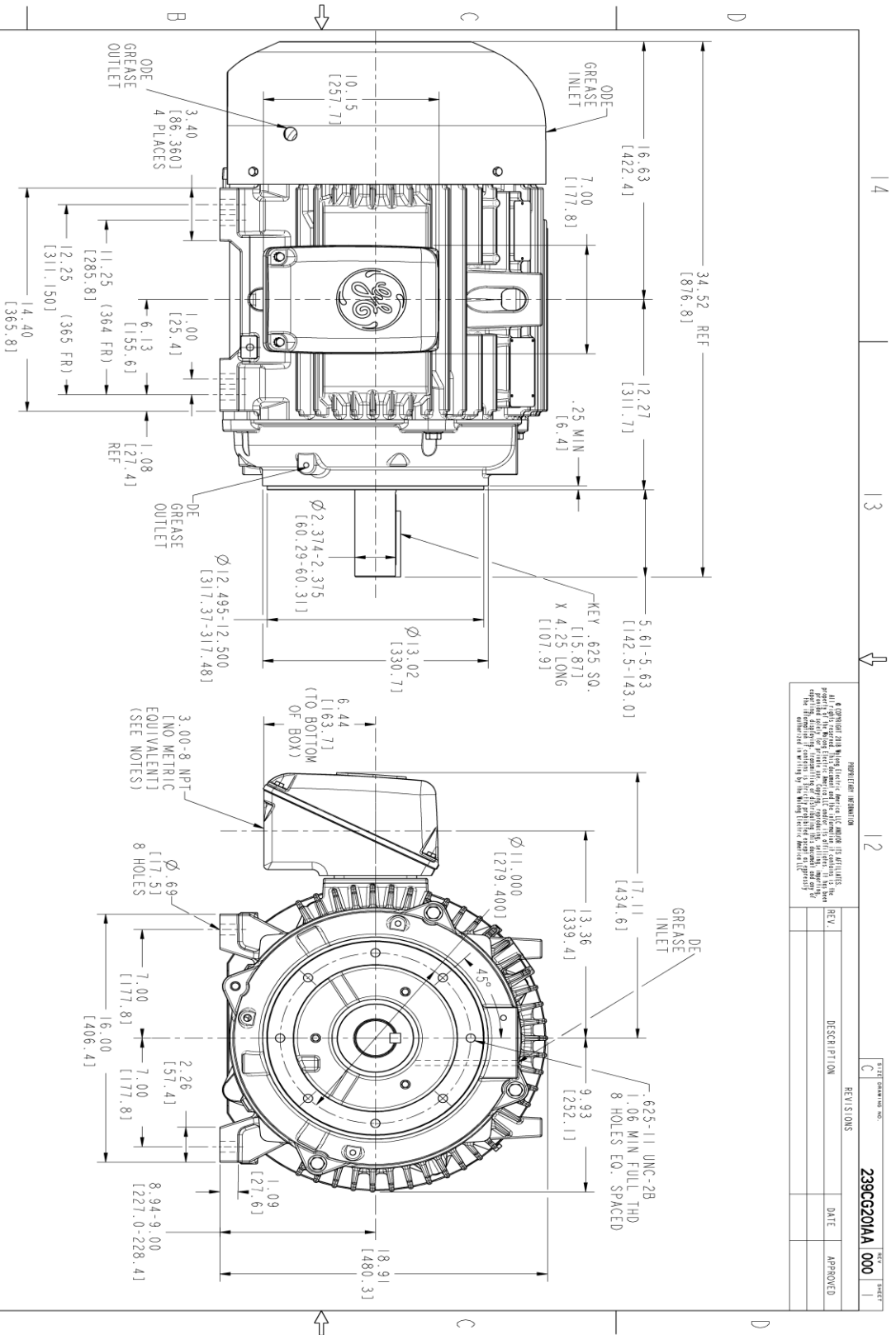
This motor is capable of two cold or one hot start with a maximum connected load inertia of 1190 Lb-Ft Sq (50.1 Kg-meter Sq)at 100% voltage, where the load torque varies with the square of the speed. Acceleration time with maximum inertia and the above load type is 33 seconds. Safe stall time at 100% voltage is 76 seconds cold, 39 seconds hot. Rotor inertia is 12.1 Lb-Ft Sq (0.51 Kg-meter Sq).

<b>Open Circuit A-C:</b>	0.601	<b>Short Circuit D-C:</b>	0.024
<b>Short Circuit A-C:</b>	0.035	<b>X/R Ratio:</b>	9.207
<b>Stator Slots:</b>	60	<b>Rotor Slots:</b>	50

**Speed Torque Current Curve (First Connection, First Speed)**



Marks:



- NOTES:
- CONDUIT BOX MAY BE PLACED WITH THE ENTRANCE DOWN, UP OR ON EITHER SIDE.
  - F-I ASM AS SHOWN.
  - ALL DIMENSIONS ARE IN INCHES. BRACKETED DIMENSIONS ARE METRIC (MILLIMETERS).

REGISTRATION INFORMATION  
 A copyright notice for GE Industrial Motors, Inc. is present, along with a disclaimer regarding the use of the drawing for manufacturing purposes.

REV.	DESCRIPTION	DATE	APPROVED
C	REVISED		

239CG201AA 000



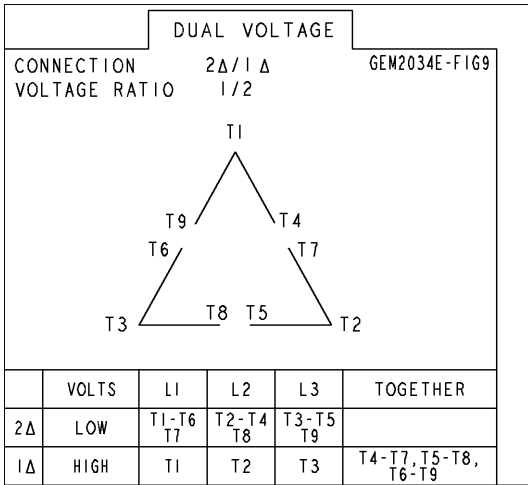
SIGNATURES	DATE	TITLE
MODEL: UTMASHA 12/09/21		
REV: UTMASHA 12/09/21		
CHECKED: KALINDS 12/09/21		
DWG: KALINDS 12/09/21		
ISSUED: UTMASHA 12/09/21		
SCALE: 0.250		

**GE INDUSTRIAL MOTORS**  
**WOLONG COMPANY**

**OUTLINE**  
**GP CONSTRUCTION**  
 364/365TC, TFC 346 CU. IN. C-BOX  
 239CG201AA  
 SHEET 1 OF 1

Marks:

**Connection Diagram**  
**GEM2034E-FIG9**



End shield Assembly		
Part Description	DE Side Part#	ODE Side Part#
End Shield	115E4253AA1	115E4251ZA1
Bearing	235A2616AA01	235A2617AA01
Slinger/Inproseal	149C4399G05	

Fan & Fan Cover Assembly	
Part Description	Part#
Fan	159C7100AA1
Fan Cover	128D6853AA1

Conduit & Accessories Box Assembly	
Part Description	Part#
Conduit Box	149C4429AA2

Mechanical Accessories	
Part Description	Part#
Brake	
Tachometer	

