



**GE INDUSTRIAL MOTORS**  
a **WOLONG** company

# Product Technical Information

February 17, 2023

Data shown is for the current revision model #. Ensure your nameplate model # matches.

<b>Model Number:</b>	<b>5KS365BAA201</b>
<b>Catalog Number:</b>	<b>M1003</b>
<b>Instruction Manual:</b>	GEI-56128
<b>Connection Diagram:</b>	GEM2034E-FIG9
<b>Outline Drawing:</b>	239CG201AB

## Accessory Connection Diagrams

<b>Bearing Thermocouple:</b>	None	<b>Heater:</b>	None
<b>RTD:</b>	None	<b>Thermistor:</b>	None
<b>Thermostat:</b>	None	<b>Winding Thermocouple:</b>	None
<b>Bearing RTD:</b>	None		

## Table of Contents

Specification	01
Performance Characteristics	02
Outline Drawing	03
Connection Drawing(s)	04
Spare parts	05

Marks:

<b>MODEL NUMBER:</b>	<b>5KS365BAA201</b>
Outline Drawing:	239CG201AB
Connection Diagram:	GEM2034E-FIG9
Instruction Book:	GEI-56128
Design Code:	36BD1227A
Type:	KS
Frame:	365TC
Phases:	3
Poles:	4
Output Power:	75HP 55.5KW
RPM:	1785
Voltage:	230/460
Hertz:	60
Amps - FL:	178.4/89.2
Service Factor:	1.15
Alt Service Factor:	--

<b>Estimated Weight:</b>	1020 Lbs
<b>Time Rating:</b>	CONT
<b>Enclosure:</b>	TEFC
<b>Encl Construction:</b>	GP
<b>Ambient Max(°C):</b>	40
<b>Alt Ambient Max(°C):</b>	--
<b>Insulation Class:</b>	F
<b>NEMA Design:</b>	B
<b>Nominal Efficiency:</b>	95.4 %
<b>Guaranteed Efficiency:</b>	94.5 %
<b>3/4 Load Efficiency:</b>	--
<b>KVA Code:</b>	G
<b>Max KVAR:</b>	26.6
<b>Power Factor:</b>	82.5
<b>Bearing - DE:</b>	6314ZC3
<b>Bearing - ODE:</b>	6213ZC3

Enclosure is Totally Enclosed Fan-Cooled

---

Stamped Nameplate Notes:

VT 0-60 HZ NEMA MG1-31



**Additional Information:**

4P - T EXTN  
C FACE WITH 12.50 RABBIT ON DE  
C/BOX 700 CU IN - 3.00" NPT  
F1 MOUNTING  
INVERTER DUTY PER NEMA MG1 PART 31  
ALTERNATE RATING FOR PWM CONTROL:1.0SF 40C AMBIENT  
VAR TORQUE RANGE 0-60 HZ



**Performance Characteristics**

1st Winding 1st Connection

**Design: 36BD1227A**

**Marks:**

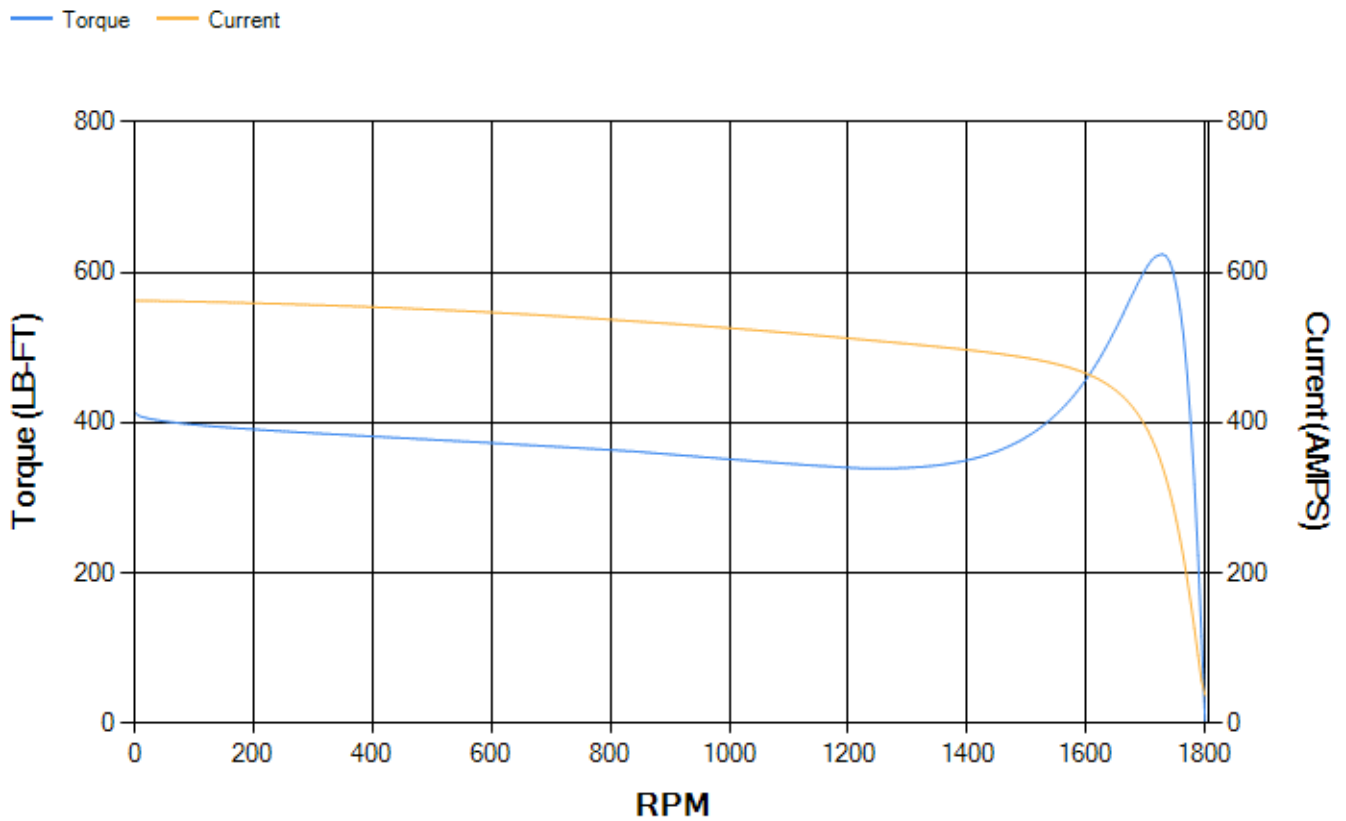
LOAD %	125.0	115.0	100.0	75.0	50.0	25.0	0.0
% EFF	94.85	95.06	95.52	95.53	95.19	92.82	0.00
% PF	84.6	83.94	82.4	77.53	67	44.19	2.93
AMPS	109.35	101.17	89	71.08	55.03	42.78	37.09

<b>TORQ(FL)#FT</b>	220.86	<b>TORQ(LR)%FL</b>	187.39	<b>TORQ(BD)%FL</b>	281.77
<b>AMPS(LR)</b>	562.56	<b>PF AT START</b>	0.32		

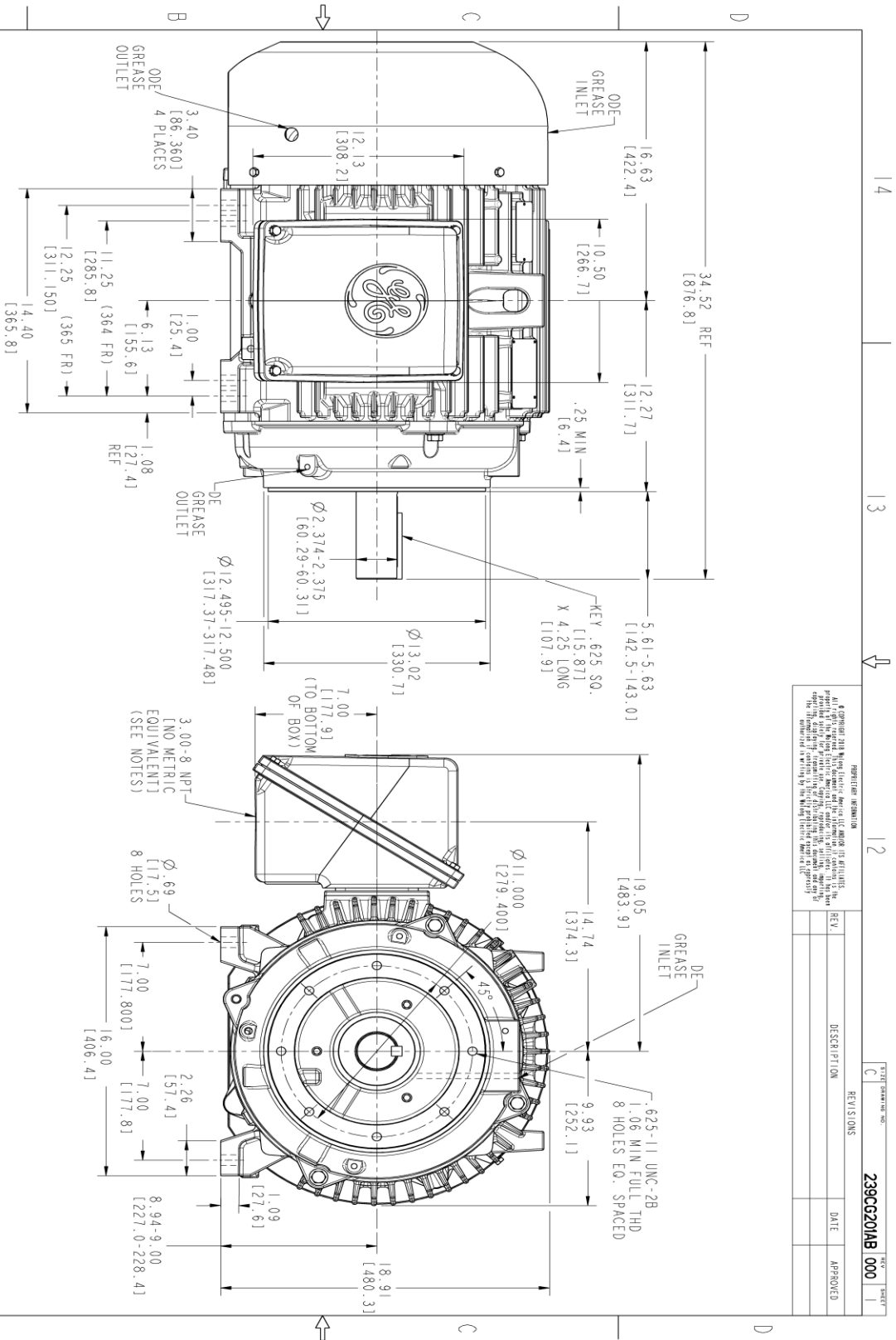
This motor is capable of two cold or one hot start with a maximum connected load inertia of 1432 Lb-Ft Sq (60.29 Kg-meter Sq)at 100% voltage, where the load torque varies with the square of the speed. Acceleration time with maximum inertia and the above load type is 27 seconds. Safe stall time at 100% voltage is 65 seconds cold, 32 seconds hot. Rotor inertia is 15.13 Lb-Ft Sq (0.64 Kg-meter Sq).

<b>Open Circuit A-C:</b>	0.625	<b>Short Circuit D-C:</b>	0.025
<b>Short Circuit A-C:</b>	0.034	<b>X/R Ratio:</b>	9.412
<b>Stator Slots:</b>	60	<b>Rotor Slots:</b>	50

**Speed Torque Current Curve (First Connection, First Speed)**



Marks:



- NOTES:
1. CONDUIT BOX MAY BE PLACED WITH THE ENTRANCE DOWN, UP OR ON EITHER SIDE.
  2. F-1 ASM AS SHOWN.
  3. ALL DIMENSIONS ARE IN INCHES. BRACKETED DIMENSIONS ARE METRIC (MILLIMETERS).

PROHIBITION INFORMATION  
 © COPYRIGHT 2018 GE. All rights reserved. GE, the GE logo, and the GE monogram are trademarks of GE Intellectual Property and/or GE Intellectual Property's immediate or indirect subsidiaries in the United States and other countries. GE reserves the right to change specifications without notice. The information on this drawing is the property of GE Intellectual Property and is not to be distributed, copied, or used in any manner without the prior written permission of GE Intellectual Property.

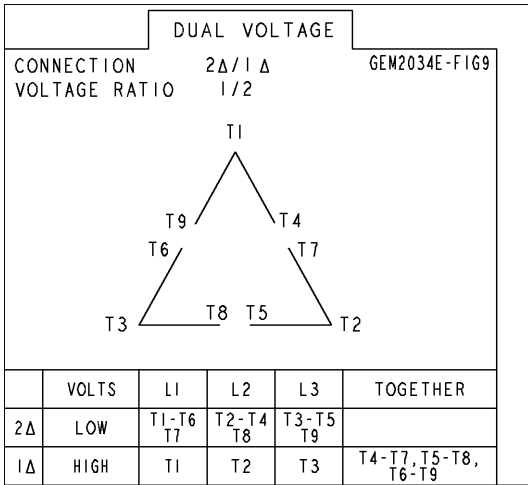
REV.	DESCRIPTION	DATE	APPROVED



SIGNATURES	DATE	GE INDUSTRIAL MOTORS
MODEL: UTMASHA 12/24/21	DATE: 12/24/21	 <b>GE INDUSTRIAL MOTORS</b> a WOLONG company <b>OUTLINE</b> <b>GP CONSTRUCTION</b> 364/365TC, TFC-700 CU. IN. C-BOX <b>239CG201AB</b>
REV. UTMASHA 12/24/21	TITLE: 12/24/21	
CHECKED: KALIDS 12/24/21	DATE: 12/24/21	
DESIGN: KALIDS 12/24/21	DATE: 12/24/21	
ISSUED: UTMASHA 12/24/21	DATE: 12/24/21	SCALE: 0.250
QUALITY: UTMASHA 12/24/21	DATE: 12/24/21	REF. NO.: 239CG201AA
SIZE: DRAWING: C	DATE: 12/24/21	SHEET 1 OF 1

**Marks:**

**Connection Diagram**  
**GEM2034E-FIG9**



End shield Assembly		
Part Description	DE Side Part#	ODE Side Part#
End Shield	115E4253AA1	115E4251ZA1
Bearing	235A2616AA01	235A2617AA01
Slinger/Inproseal	149C4399G05	

Fan & Fan Cover Assembly	
Part Description	Part#
Fan	159C7100AA1
Fan Cover	128D6853AA1

Conduit & Accessories Box Assembly	
Part Description	Part#
Conduit Box	118D4408AD2

Mechanical Accessories	
Part Description	Part#
Brake	
Tachometer	

