



GE INDUSTRIAL MOTORS
a **WOLONG** company

Product Technical Information

November 13, 2022

Data shown is for the current revision model #. Ensure your nameplate model # matches.

Model Number:	5KS405BAA118
Catalog Number:	M1004
Instruction Manual:	GEI-56128
Connection Diagram:	GEM2034E-FIG7
Outline Drawing:	239CG400AB

Accessory Connection Diagrams

Bearing Thermocouple:	None	Heater:	None
RTD:	None	Thermistor:	None
Thermostat:	None	Winding Thermocouple:	None
Bearing RTD:	None		

Table of Contents

Specification	01
Performance Characteristics	02
Outline Drawing	03
Connection Drawing(s)	04
Spare parts	05

Marks:

MODEL NUMBER:	5KS405BAA118	Estimated Weight:	1510 Lbs
Outline Drawing:	239CG400AB	Time Rating:	CONT
Connection Diagram:	GEM2034E-FIG7	Enclosure:	TEFC
Instruction Book:	GEI-56128	Encl Construction:	GP
Design Code:	40BD0052A	Ambient Max(°C):	40
Type:	KS	Alt Ambient Max(°C):	--
Frame:	405TS	Insulation Class:	F
Phases:	3	NEMA Design:	B
Poles:	2	Nominal Efficiency:	95.0 %
Output Power:	100HP 74KW	Guaranteed Efficiency:	94.1 %
RPM:	3565	3/4 Load Efficiency:	--
Voltage:	460	KVA Code:	G
Hertz:	60	Max KVAR:	17.1
Amps - FL:	108.0	Power Factor:	91.0
Service Factor:	1.15	Bearing - DE:	6213ZC3
Alt Service Factor:	--	Bearing - ODE:	6213ZC3

Enclosure is Totally Enclosed Fan-Cooled

Stamped Nameplate Notes:

VT 0-60 HZ NEMA MG1-31



Additional Information:

2P - TS EXTN
C/BOX 700 CU IN - 3.00" NPT
F1 MOUNTING
INVERTER DUTY PER NEMA MG1 PART 31
ALTERNATE RATING FOR PWM CONTROL:1.0SF 40C AMBIENT
VAR TORQUE RANGE 0-60 HZ



Performance Characteristics

1st Winding 1st Connection

Design: 40BD0052A

Marks:

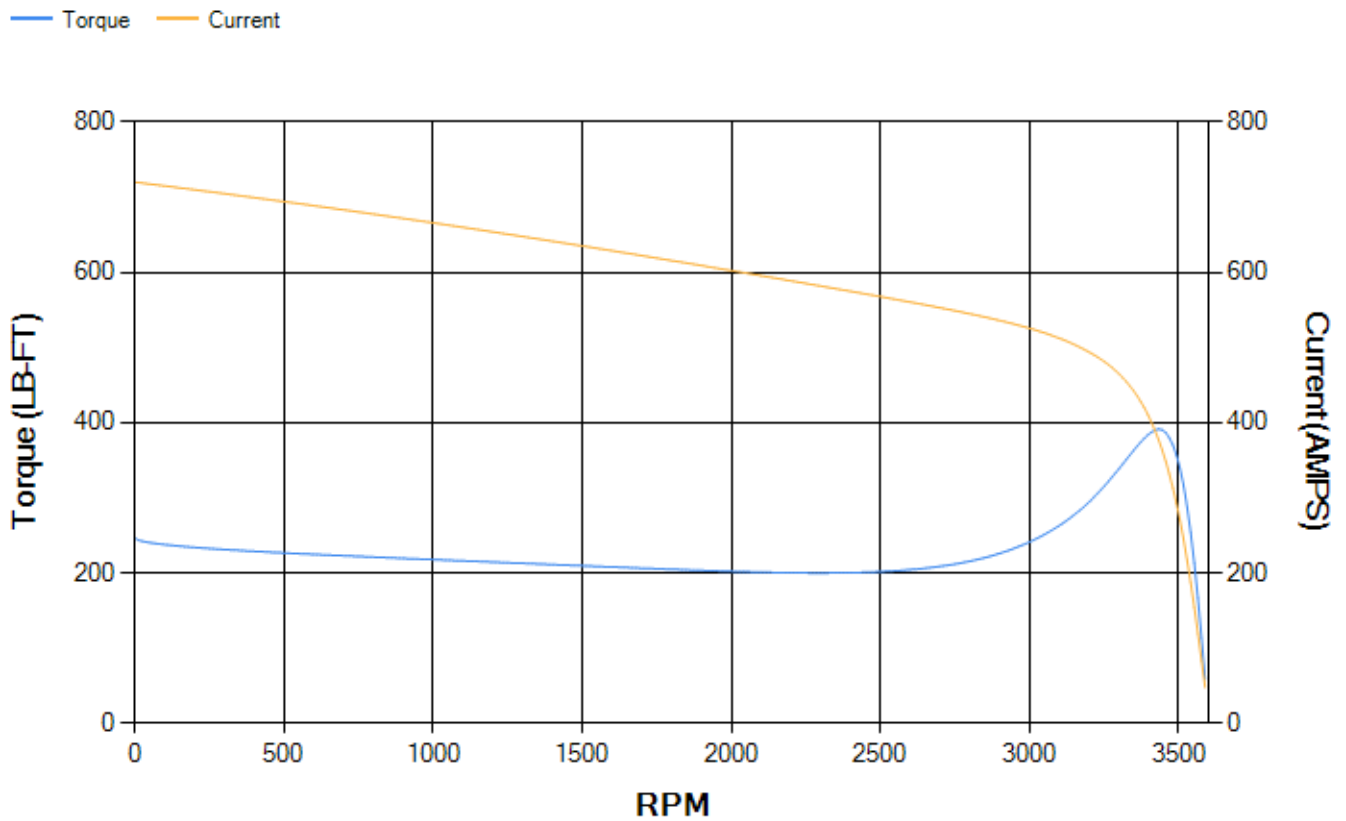
LOAD %	125.0	115.0	100.0	75.0	50.0	25.0	0.0
% EFF	94.74	94.97	95.45	95.48	95.12	92.72	0.00
% PF	90.92	91.11	91.12	90.05	85.92	70.37	6.67
AMPS	135.81	124.39	107.62	81.65	57.26	35.86	23.79

TORQ(FL)#FT	147.31	TORQ(LR)%FL	167.5	TORQ(BD)%FL	265.45
AMPS(LR)	720.25	PF AT START	0.25		

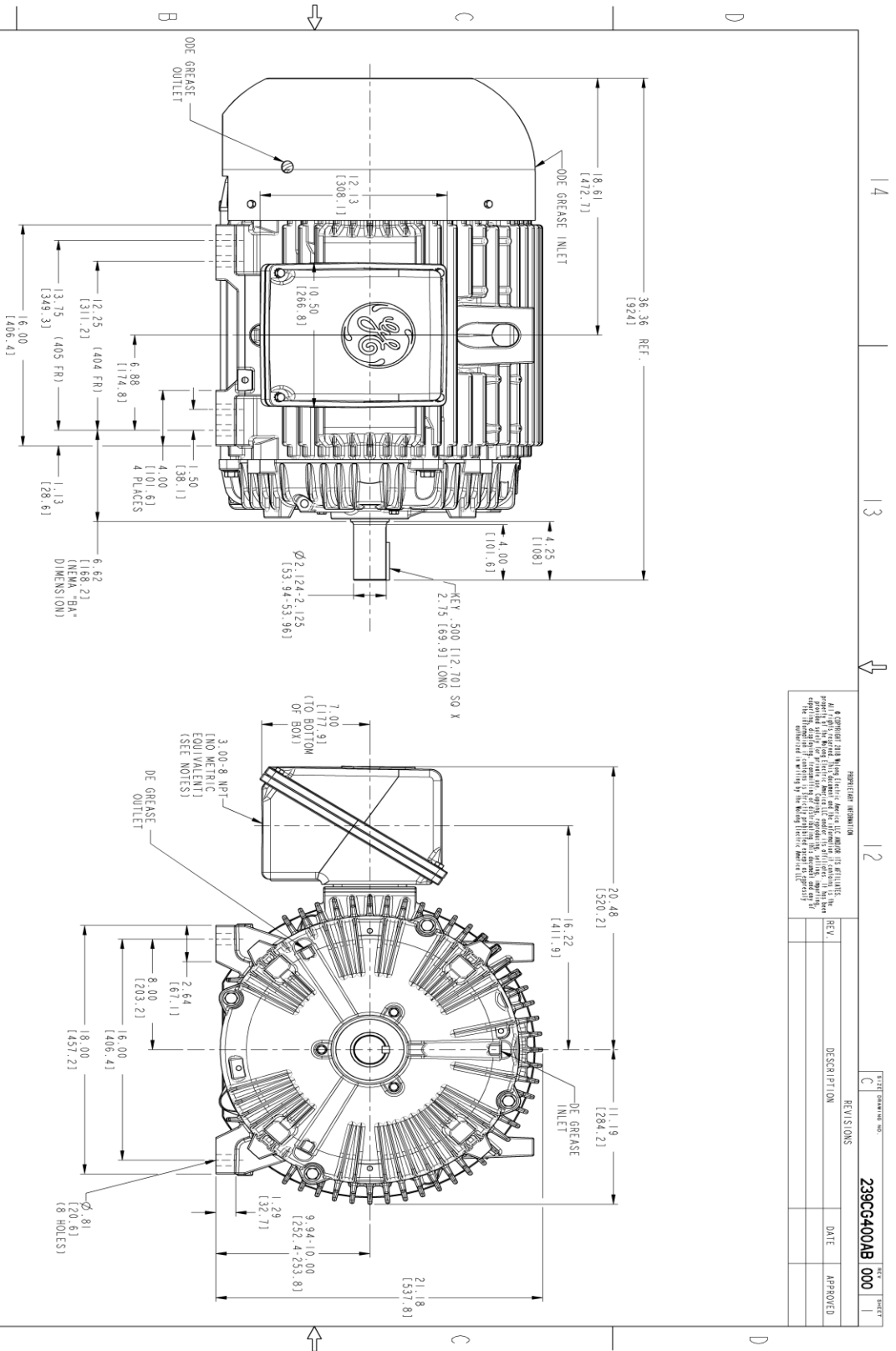
This motor is capable of two cold or one hot start with a maximum connected load inertia of 362 Lb-Ft Sq (15.24 Kg-meter Sq)at 100% voltage, where the load torque varies with the square of the speed. Acceleration time with maximum inertia and the above load type is 24 seconds. Safe stall time at 100% voltage is 58 seconds cold, 29 seconds hot. Rotor inertia is 15.02 Lb-Ft Sq (0.63 Kg-meter Sq).

Open Circuit A-C:	1.211	Short Circuit D-C:	0.03
Short Circuit A-C:	0.044	X/R Ratio:	11.377
Stator Slots:	48	Rotor Slots:	38

Speed Torque Current Curve (First Connection, First Speed)



Marks:



REVISION INFORMATION

REV.	DESCRIPTION	DATE	APPROVED

DISCREPANCY

239CG400AB 000

REV. 1

- NOTES:
1. CONDUIT BOX MAY BE PLACED WITH THE ENTRANCE DOWN, UP OR ON EITHER SIDE.
 2. F - I ASSEMBLY AS SHOWN.
 3. ALL DIMENSIONS ARE IN INCHES, BRACKETED DIMENSIONS ARE METRIC (MILLIMETERS).



SIGNATURES	DATE	TITLE
MODEL: UTKASHA	07/10/22	<p>GE INDUSTRIAL MOTORS a WOLONG company</p> <p>OUTLINE 404/405 TS GP CONSTRUCTION TEFC GP 700 CU IN C90X 239CG400AB</p>
REVISED BY: UTKASHA	07/10/22	
CHECKED BY: KALIDAS	07/10/22	
DRAWN BY: SACHIN	07/10/22	
DATE: UTKASHA	07/10/22	SCALE: 0.250
QUALITY: UTKASHA	07/10/22	REF. NO: 239CG400AB
SIZE: DRAWING	C	SHEET 1 OF 1

Marks:

Connection Diagram
GEM2034E-FIG7



End shield Assembly		
Part Description	DE Side Part#	ODE Side Part#
End Shield	115E4305AA1	115E4305ZA1
Bearing	235A2617AA01	235A2617AA01
Slinger/Inproseal	149C4399G05	

Fan & Fan Cover Assembly	
Part Description	Part#
Fan	159C7100AA11
Fan Cover	128D6852AA1

Conduit & Accessories Box Assembly	
Part Description	Part#
Conduit Box	118D4408AD2

Mechanical Accessories	
Part Description	Part#
Brake	
Tachometer	

