



GE INDUSTRIAL MOTORS
a **WOLONG** company

Product Technical Information

February 17, 2023

Data shown is for the current revision model #. Ensure your nameplate model # matches.

Model Number:	5KS405BAA201
Catalog Number:	M1005
Instruction Manual:	GEI-56128
Connection Diagram:	GEM2034E-FIG9
Outline Drawing:	239CG401AA

Accessory Connection Diagrams

Bearing Thermocouple:	None	Heater:	None
RTD:	None	Thermistor:	None
Thermostat:	None	Winding Thermocouple:	None
Bearing RTD:	None		

Table of Contents

Specification	01
Performance Characteristics	02
Outline Drawing	03
Connection Drawing(s)	04
Spare parts	05

Marks:

MODEL NUMBER:	5KS405BAA201	Estimated Weight:	1460 Lbs
Outline Drawing:	239CG401AA	Time Rating:	CONT
Connection Diagram:	GEM2034E-FIG9	Enclosure:	TEFC
Instruction Book:	GEI-56128	Encl Construction:	GP
Design Code:	40BD1159A	Ambient Max(°C):	40
Type:	KS	Alt Ambient Max(°C):	--
Frame:	405TC	Insulation Class:	F
Phases:	3	NEMA Design:	B
Poles:	4	Nominal Efficiency:	95.4 %
Output Power:	100HP 74KW	Guaranteed Efficiency:	94.5 %
RPM:	1785	3/4 Load Efficiency:	--
Voltage:	230/460	KVA Code:	G
Hertz:	60	Max KVAR:	34.7
Amps - FL:	234.0/117.0	Power Factor:	83.5
Service Factor:	1.15	Bearing - DE:	6316ZC3S0
Alt Service Factor:	--	Bearing - ODE:	6213ZC3

Enclosure is Totally Enclosed Fan-Cooled

Stamped Nameplate Notes:

VT 0-60 HZ NEMA MG1-31



Additional Information:

4P - T EXTN
C FACE ON DE
C/BOX 700 CU IN - 3.00" NPT
F1 MOUNTING
INVERTER DUTY PER NEMA MG1 PART 31
ALTERNATE RATING FOR PWM CONTROL:1.0SF 40C AMBIENT
VAR TORQUE RANGE 0-60 HZ



Performance Characteristics

1st Winding 1st Connection

Design: 40BD1159A

Marks:

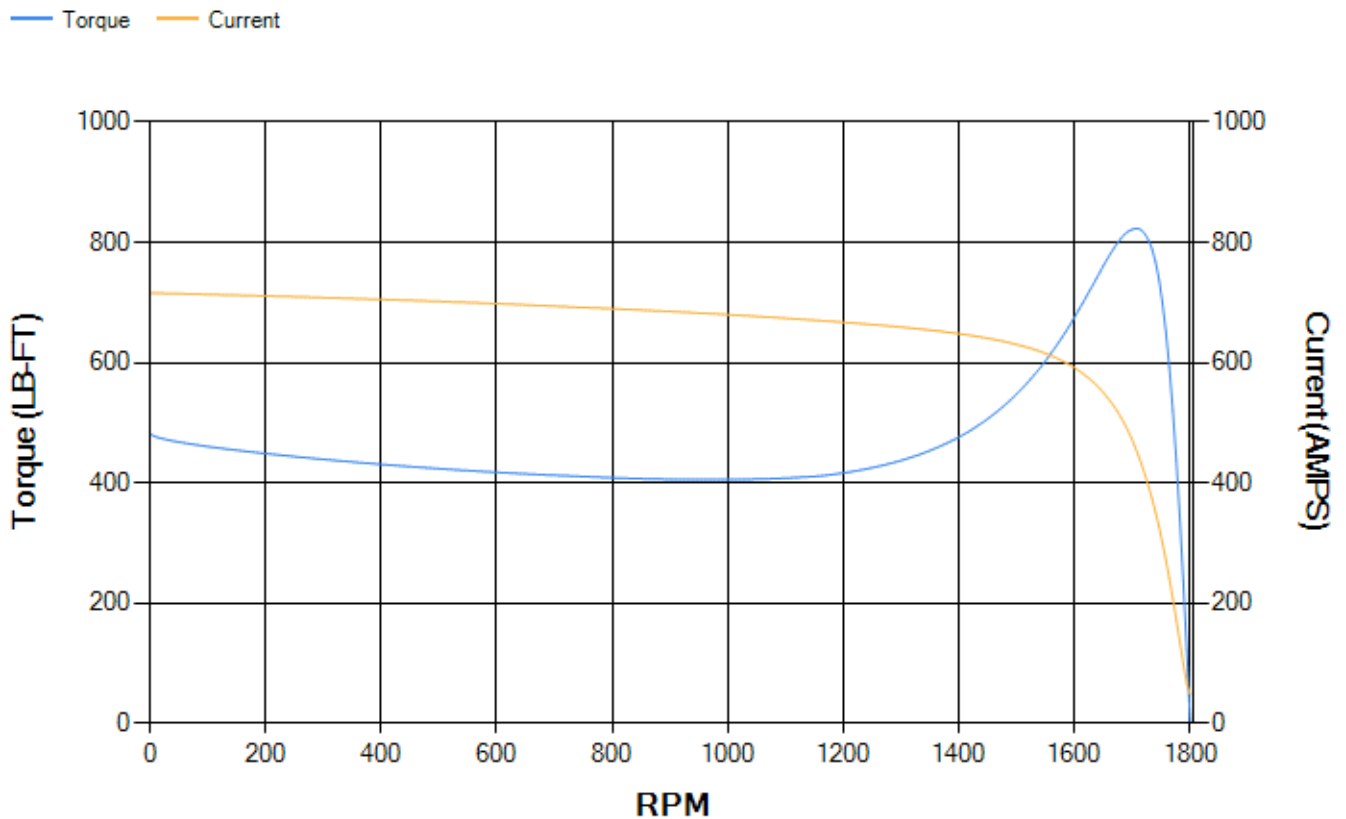
LOAD %	125.0	115.0	100.0	75.0	50.0	25.0	0.0
% EFF	94.93	95.13	95.58	95.57	95.2	92.81	0.00
% PF	85.46	84.81	83.3	78.51	68.1	45.2	3.16
AMPS	144.2	133.4	117.56	93.55	72.19	55.77	48.37

TORQ(FL)#FT	294.32	TORQ(LR)%FL	164.02	TORQ(BD)%FL	278.95
AMPS(LR)	715.84	PF AT START	0.32		

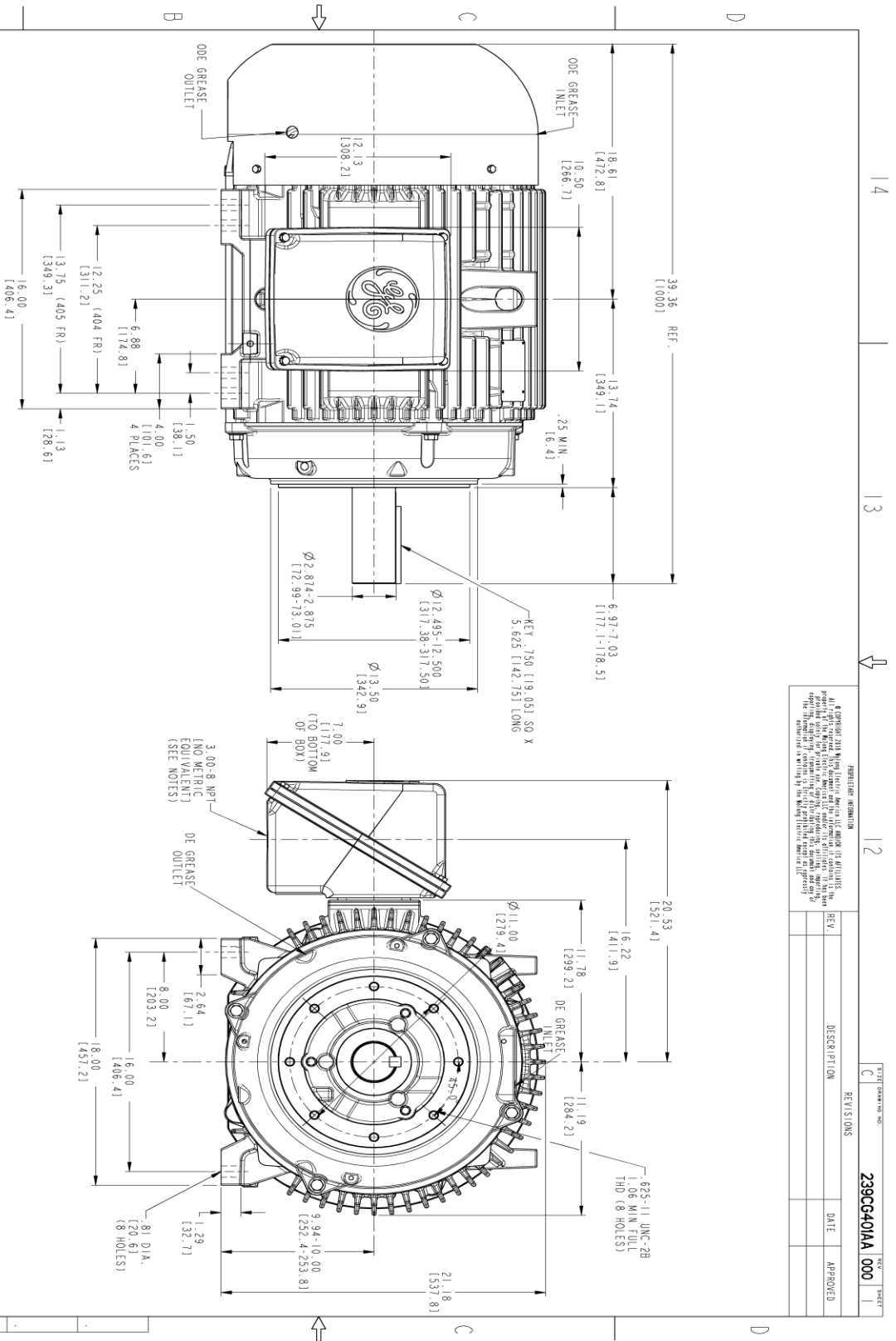
This motor is capable of two cold or one hot start with a maximum connected load inertia of 2242 Lb-Ft Sq (94.39 Kg-meter Sq)at 100% voltage, where the load torque varies with the square of the speed. Acceleration time with maximum inertia and the above load type is 35 seconds. Safe stall time at 100% voltage is 75 seconds cold, 42 seconds hot. Rotor inertia is 23.13 Lb-Ft Sq (0.97 Kg-meter Sq).

Open Circuit A-C:	0.673	Short Circuit D-C:	0.025
Short Circuit A-C:	0.041	X/R Ratio:	9.474
Stator Slots:	72	Rotor Slots:	58

Speed Torque Current Curve (First Connection, First Speed)



Marks:



NOTES:

1. CONDUIT BOX MAY BE PLACED WITH THE ENTRANCE DOWN, UP OR ON EITHER SIDE.
2. F-I ASSEMBLY AS SHOWN.
3. ALL DIMENSIONS ARE IN INCHES BRACKETED DIMENSIONS ARE METRIC (MILLIMETERS).



THIRD ANGLE PROJECTION

PROHIBITION INFORMATION
 © Copyright 2018 Wabtec Electric America LLC and/or its affiliates. All rights reserved. This document and the information contained herein are the property of Wabtec Electric America LLC and/or its affiliates. No part of this document may be reproduced, stored in a retrieval system, or transmitted in any form or by any means, electronic, mechanical, photocopying, recording, or by any information storage and retrieval system, without the prior written permission of Wabtec Electric America LLC and/or its affiliates. The information contained herein is the confidential and proprietary information of Wabtec Electric America LLC and/or its affiliates.

REV.	DESCRIPTION	DATE	APPROVED

SIGNATURES	DATE	TITLE
MODEL: UTKASHA	07/10/22	 GE INDUSTRIAL MOTORS a WOLONG company
REVISED BY: UTKASHA	07/10/22	
CHECKED BY: KALIDAS	07/10/22	
DESIGNED BY: SACHIN	07/10/22	
DATE: UTKASHA	07/10/22	OUTLINE 404/405 TC GP CONSTRUCTION TFC GP 700 CU IN C-90X
QUALITY: UTKASHA	07/10/22	239CG401AA 000
SCALE: 0.250	REF. NO: 239CG401AA	SHEET 1 OF 1

Marks:

Connection Diagram
GEM2034E-FIG9



End shield Assembly		
Part Description	DE Side Part#	ODE Side Part#
End Shield	115E4303AA1	115E4305ZA1
Bearing	235A2618AA04	235A2617AA01
Slinger/Inproseal	149C4399G06	

Fan & Fan Cover Assembly	
Part Description	Part#
Fan	159C7100AA2
Fan Cover	128D6852AA1

Conduit & Accessories Box Assembly	
Part Description	Part#
Conduit Box	118D4408AD2

Mechanical Accessories	
Part Description	Part#
Brake	
Tachometer	

