



GE INDUSTRIAL MOTORS
a **WOLONG** company

Product Technical Information

October 14, 2022

Data shown is for the current revision model #. Ensure your nameplate model # matches.

Model Number:	5KS444BAA201
Catalog Number:	M1006
Instruction Manual:	GEI-56128
Connection Diagram:	GEM2034E-FIG7
Outline Drawing:	239CG701AA

Accessory Connection Diagrams

Bearing Thermocouple:	None	Heater:	None
RTD:	None	Thermistor:	None
Thermostat:	None	Winding Thermocouple:	None
Bearing RTD:	None		

Table of Contents

Specification	01
Performance Characteristics	02
Outline Drawing	03
Connection Drawing(s)	04
Spare parts	05

Marks:

MODEL NUMBER:	5KS444BAA201	Estimated Weight:	1810 Lbs
Outline Drawing:	239CG701AA	Time Rating:	CONT
Connection Diagram:	GEM2034E-FIG7	Enclosure:	TEFC
Instruction Book:	GEI-56128	Encl Construction:	GP
Design Code:	44BD1156A	Ambient Max(°C):	40
Type:	KS	Alt Ambient Max(°C):	--
Frame:	444TC	Insulation Class:	F
Phases:	3	NEMA Design:	B
Poles:	4	Nominal Efficiency:	95.4 %
Output Power:	125HP 92.5KW	Guaranteed Efficiency:	94.5 %
RPM:	1785	3/4 Load Efficiency:	--
Voltage:	460	KVA Code:	G
Hertz:	60	Max KVAR:	39.8
Amps - FL:	145.0	Power Factor:	84.5
Service Factor:	1.15	Bearing - DE:	6318ZC3
Alt Service Factor:	--	Bearing - ODE:	6314ZC3

Enclosure is Totally Enclosed Fan-Cooled

Stamped Nameplate Notes:

VT 0-60 HZ NEMA MG1-31



Additional Information:

4P - T EXTN
C FACE WITH 16.00 RABBIT ON DE
C/BOX 700 CU IN - 3.00" NPT
F1 MOUNTING
INVERTER DUTY PER NEMA MG1 PART 31
ALTERNATE RATING FOR PWM CONTROL:1.0SF 40C AMBIENT
VAR TORQUE RANGE 0-60 HZ



Performance Characteristics

1st Winding 1st Connection

Design: 44BD1156A

Marks:

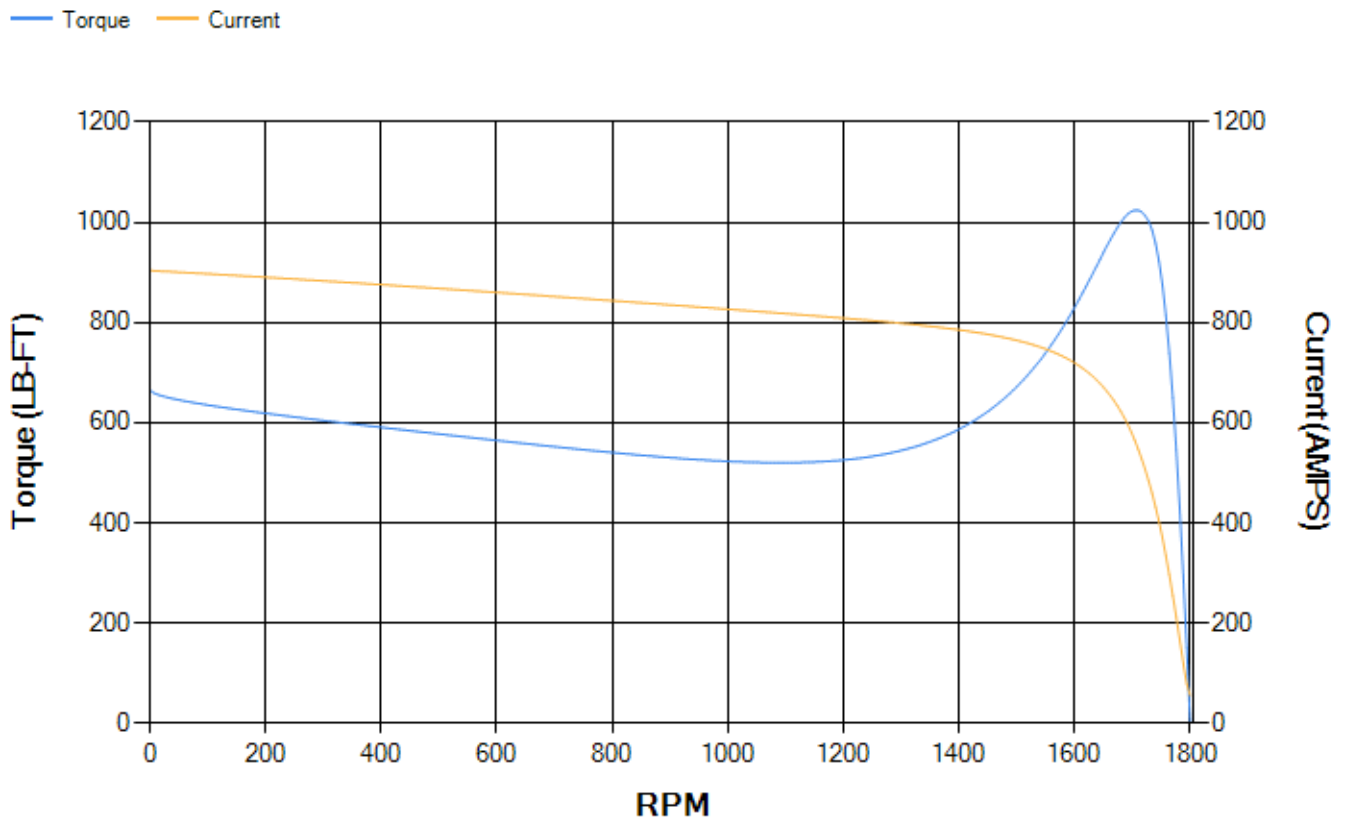
LOAD %	125.0	115.0	100.0	75.0	50.0	25.0	0.0
% EFF	95.06	95.26	95.69	95.67	95.3	92.94	0.00
% PF	86.35	85.84	84.59	80.38	70.75	48.14	3.4
AMPS	178.16	164.53	144.55	114.1	86.75	65.37	55.54

TORQ(FL)#FT	368.12	TORQ(LR)%FL	181	TORQ(BD)%FL	277.86
AMPS(LR)	903.79	PF AT START	0.32		

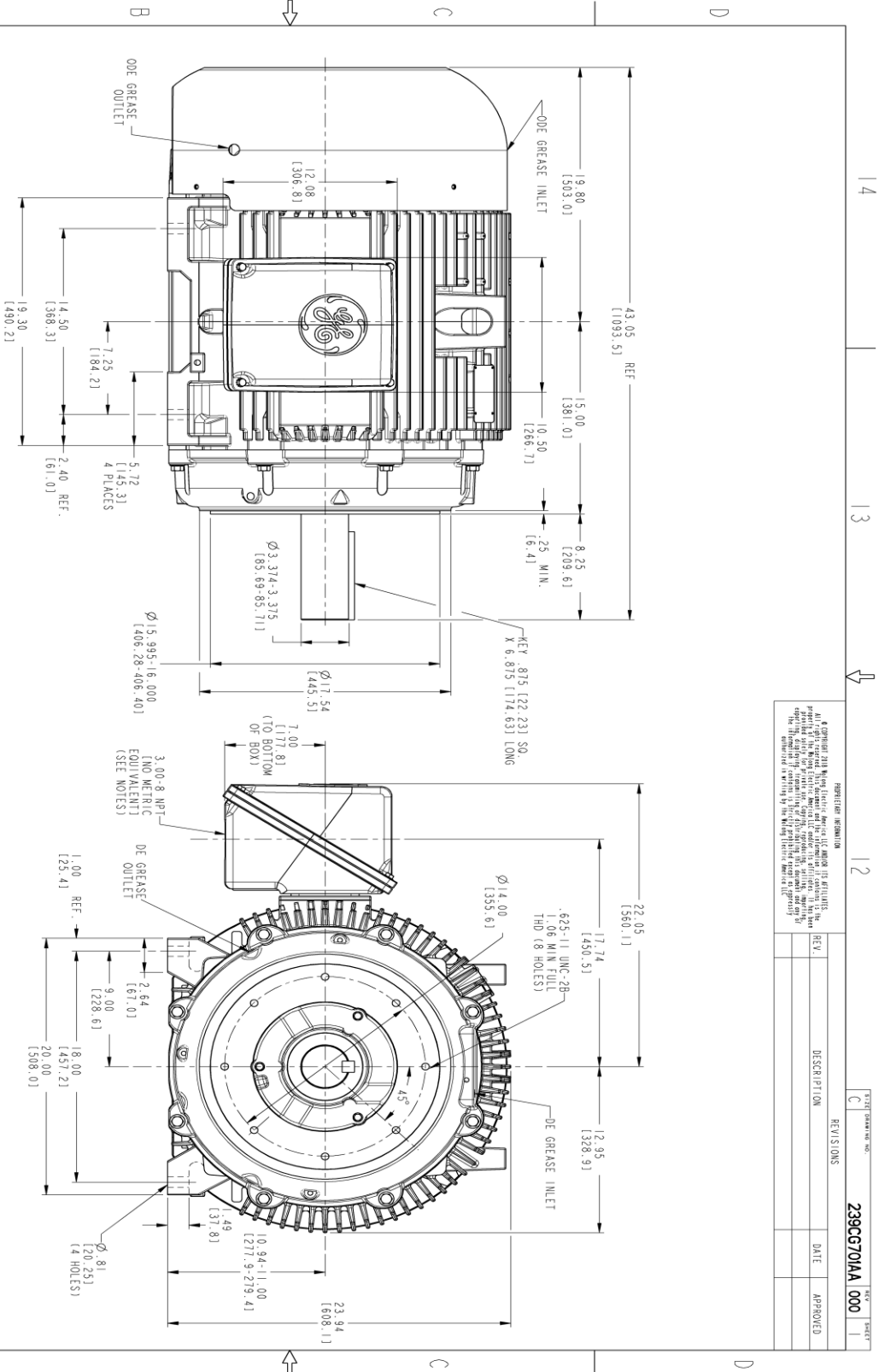
This motor is capable of two cold or one hot start with a maximum connected load inertia of 1902 Lb-Ft Sq (80.07 Kg-meter Sq)at 100% voltage, where the load torque varies with the square of the speed. Acceleration time with maximum inertia and the above load type is 23 seconds. Safe stall time at 100% voltage is 55 seconds cold, 28 seconds hot. Rotor inertia is 47.44 Lb-Ft Sq (2 Kg-meter Sq).

Open Circuit A-C:	0.686	Short Circuit D-C:	0.028
Short Circuit A-C:	0.039	X/R Ratio:	10.63
Stator Slots:	72	Rotor Slots:	58

Speed Torque Current Curve (First Connection, First Speed)



Marks:



- NOTES:
- 1. CONDUIT BOX MAY BE PLACED WITH THE ENTRANCE DOWN, UP OR ON EITHER SIDE.
 - 2. F-1 ASSEMBLY AS SHOWN.
 - 3. ALL DIMENSIONS ARE IN INCHES AND BRACKETED DIMENSIONS ARE IN METRIC (MILLIMETERS).



PROPRIETARY INFORMATION
 © Copyright 2018 GE Global Energy Services LLC and/or its affiliates. This document contains confidential and/or proprietary information of GE Global Energy Services LLC and/or its affiliates. It is intended for the use of the individual named on the title page only. All other rights are reserved. The information contained herein is the property of GE Global Energy Services LLC and/or its affiliates. It is to be used only for the specific purpose intended and is not to be disseminated or otherwise made available to the public in any form without the express written permission of GE Global Energy Services LLC and/or its affiliates.

DATE	DESCRIPTION

SIGNATURES	DATE	
MODEL: 444 TC GP CONSTRUCTION	DATE: 07/10/22	
REV: 239CG701AA 000	DATE: 07/10/22	
CHECKED: MALINDAS	DATE: 07/10/22	
DRAWN: SACHIN	DATE: 07/10/22	
WES:		
QUALITY:		
ISSUED:		
SCALE: 8:200		

GE INDUSTRIAL MOTORS
OUTLINE
444 TC GP CONSTRUCTION
TEFC GP, 700 CU. IN. C-BOX
239CG701AA
000

SHEET DRAWING NO. **239CG701AA 000**

REV: **000**

SHEET 1 OF 1

Marks:

Connection Diagram
GEM2034E-FIG7



End shield Assembly		
Part Description	DE Side Part#	ODE Side Part#
End Shield	115E4357AA1	115E4354ZA1
Bearing	235A2614AA01	235A2616AA01
Slinger/Inproseal	149C4399G07	

Fan & Fan Cover Assembly	
Part Description	Part#
Fan	159C7100AA2
Fan Cover	128D6851AA1

Conduit & Accessories Box Assembly	
Part Description	Part#
Conduit Box	118D4408AD2

Mechanical Accessories	
Part Description	Part#
Brake	
Tachometer	

