



GE INDUSTRIAL MOTORS
a **WOLONG** company

Product Technical Information

February 17, 2023

Data shown is for the current revision model #. Ensure your nameplate model # matches.

Model Number:	5KS445BAA201
Catalog Number:	M1007
Instruction Manual:	GEI-56128
Connection Diagram:	GEM2034E-FIG7
Outline Drawing:	239CG601AA

Accessory Connection Diagrams

Bearing Thermocouple:	None	Heater:	None
RTD:	None	Thermistor:	None
Thermostat:	None	Winding Thermocouple:	None
Bearing RTD:	None		

Table of Contents

Specification	01
Performance Characteristics	02
Outline Drawing	03
Connection Drawing(s)	04
Spare parts	05

Marks:

MODEL NUMBER: 5KS445BAA201
Outline Drawing: 239CG601AA
Connection Diagram: GEM2034E-FIG7
Instruction Book: GEI-56128
Design Code: 44BD1157A
Type: KS
Frame: 445TC
Phases: 3
Poles: 4
Output Power: 150HP 111KW
RPM: 1780
Voltage: 460
Hertz: 60
Amps - FL: 169.0
Service Factor: 1.15
Alt Service Factor: --

Estimated Weight: 1970 Lbs
Time Rating: CONT
Enclosure: TEFC
Encl Construction: GP
Ambient Max(°C): 40
Alt Ambient Max(°C): --
Insulation Class: F
NEMA Design: B
Nominal Efficiency: 95.8 %
Guaranteed Efficiency: 95.0 %
3/4 Load Efficiency: --
KVA Code: G
Max KVAR: 42.5
Power Factor: 86.5
Bearing - DE: 6318ZC3
Bearing - ODE: 6314ZC3

Enclosure is Totally Enclosed Fan-Cooled

Stamped Nameplate Notes:

VT 0-60 HZ NEMA MG1-31



Additional Information:

4P - T EXTN
C FACE WITH 16.00 RABBIT ON DE
C/BOX 700 CU IN - 3.00" NPT
F1 MOUNTING
INVERTER DUTY PER NEMA MG1 PART 31
ALTERNATE RATING FOR PWM CONTROL:1.0SF 40C AMBIENT
VAR TORQUE RANGE 0-60 HZ



Performance Characteristics

1st Winding 1st Connection

Design: 44BD1157A

Marks:

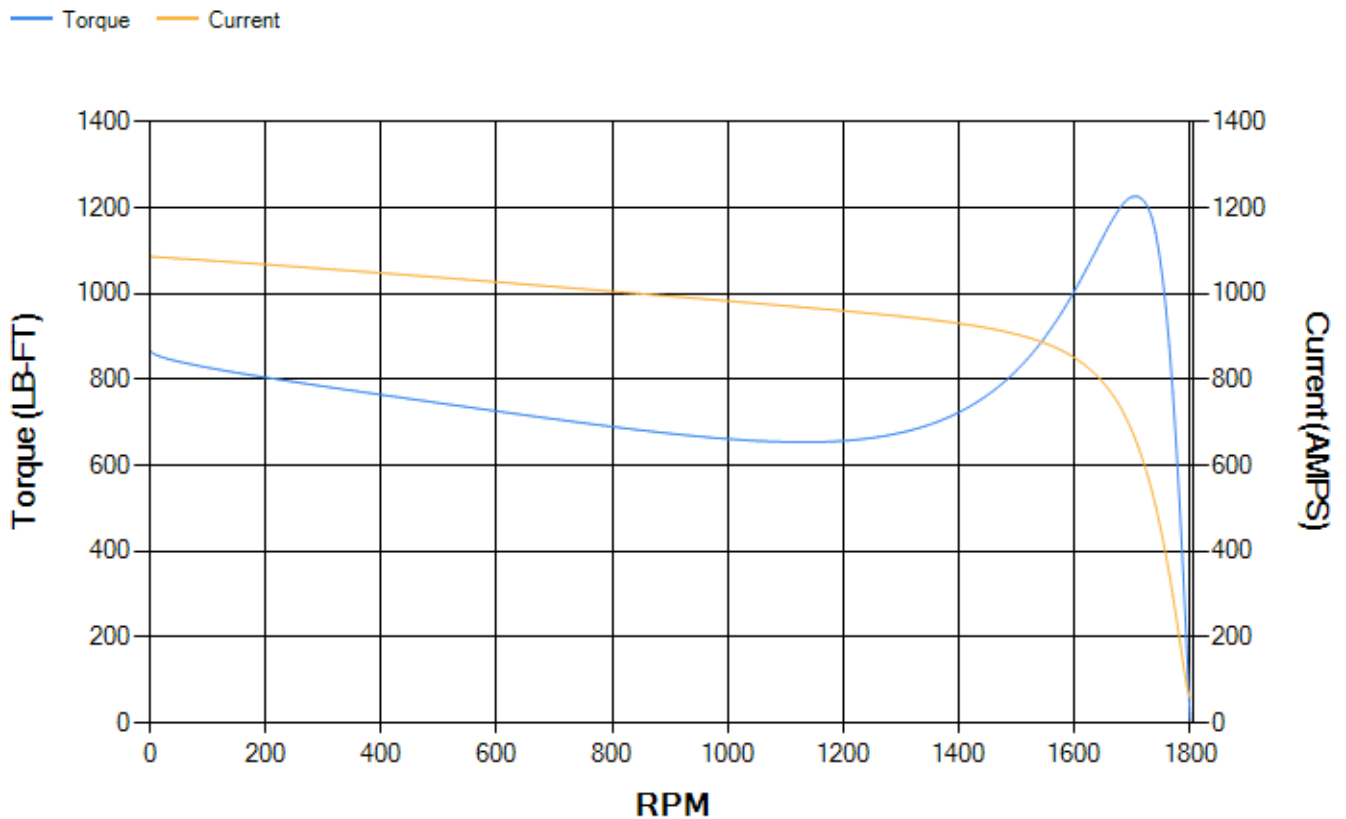
LOAD %	125.0	115.0	100.0	75.0	50.0	25.0	0.0
% EFF	95.38	95.58	96.03	96.06	95.8	93.81	0.00
% PF	87.62	87.25	86.27	82.72	74.1	52.01	3.29
AMPS	209.97	193.58	169.48	132.51	98.88	71.93	59.21

TORQ(FL)#FT	441.8	TORQ(LR)%FL	196.74	TORQ(BD)%FL	277.39
AMPS(LR)	1086.96	PF AT START	0.33		

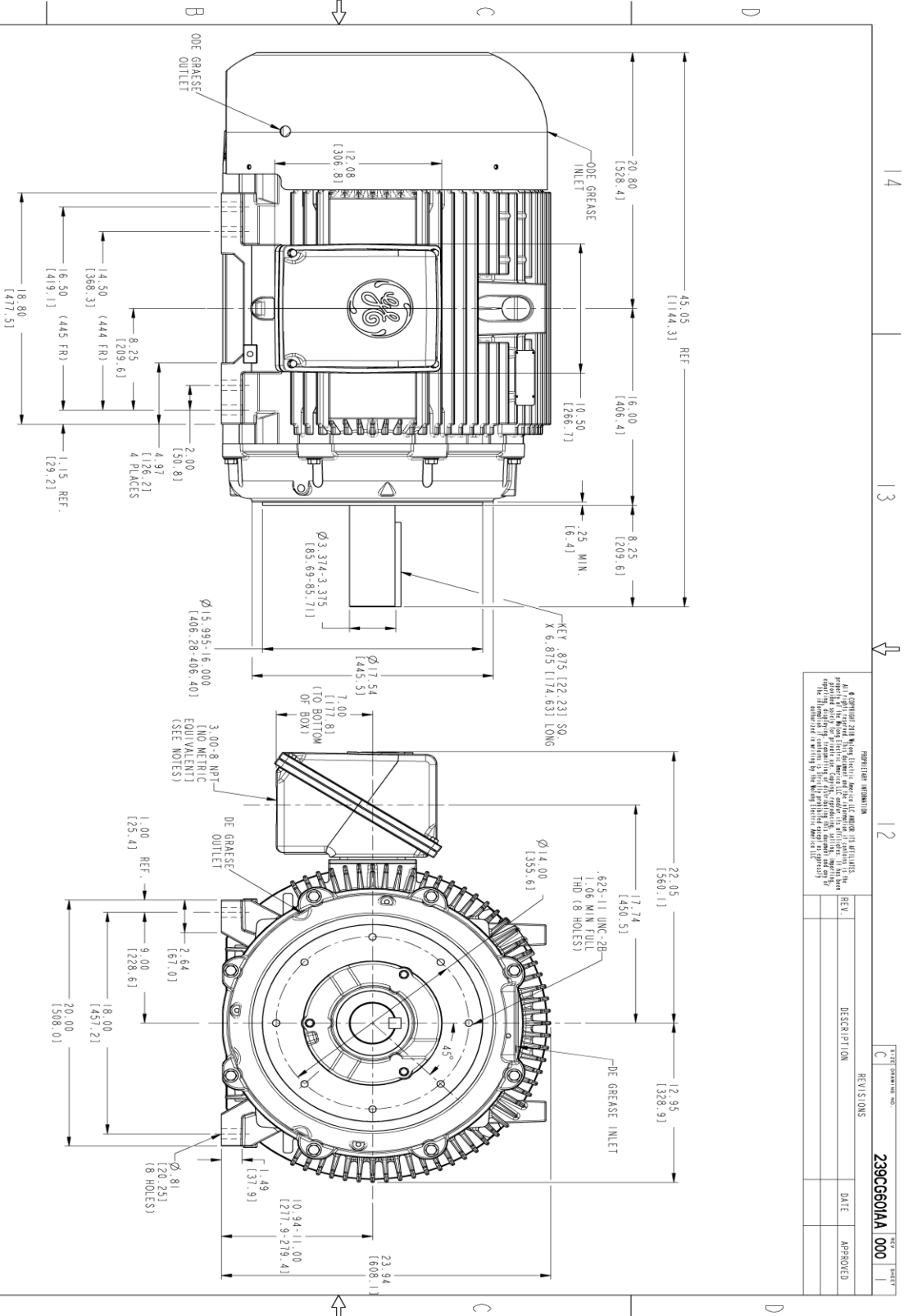
This motor is capable of two cold or one hot start with a maximum connected load inertia of 2367 Lb-Ft Sq (99.65 Kg-meter Sq)at 100% voltage, where the load torque varies with the square of the speed. Acceleration time with maximum inertia and the above load type is 23 seconds. Safe stall time at 100% voltage is 53 seconds cold, 27 seconds hot. Rotor inertia is 62.69 Lb-Ft Sq (2.64 Kg-meter Sq).

Open Circuit A-C:	0.754	Short Circuit D-C:	0.03
Short Circuit A-C:	0.037	X/R Ratio:	11.458
Stator Slots:	72	Rotor Slots:	58

Speed Torque Current Curve (First Connection, First Speed)



Marks:



- NOTES:
1. CONDUIT BOX MAY BE PLACED WITH THE ENTRANCE DOWN, UP OR ON EITHER SIDE.
 2. F-1 ASSEMBLY AS SHOWN.
 3. ALL DIMENSIONS ARE IN INCHES AND BRACKETED DIMENSIONS ARE IN METRIC (MILLIMETERS).



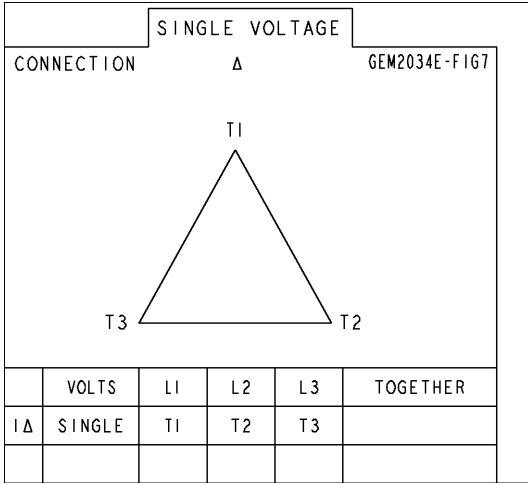
REGISTRATION INFORMATION
 GE is a registered trademark of General Electric Company. All other marks are the property of their respective owners. This drawing is the property of GE and is not to be reproduced, stored in a retrieval system, or transmitted in any form or by any means, electronic, mechanical, photocopying, recording, or by any information storage and retrieval system, without the prior written permission of GE. The information contained in this drawing is for reference only and is not to be used for manufacturing purposes.

REV.	DESCRIPTION	DATE	APPROVED

SIGNATURES	DATE	TITLE
MODEL: UTMASMA	07/10/22	<p>GE INDUSTRIAL MOTORS a WOLONG company</p> <p>OUTLINE 444/445 TC GP CONSTRUCTION TFC GP 700 CU IN C-90X 239CG601AA</p>
REV. UTMASMA	07/10/22	
CHECKED: KALIDAS	07/10/22	
DRAWN: SACHIN	07/10/22	
DATE: UTMASMA	07/10/22	SCALE: 0.200
QUALITY: UTMASMA	07/10/22	REF. NO: 239CG601X
SIZE: C		SHEET 1 OF 1

Marks:

Connection Diagram
GEM2034E-FIG7



End shield Assembly		
Part Description	DE Side Part#	ODE Side Part#
End Shield	115E4357AA1	115E4354ZA1
Bearing	235A2614AA01	235A2616AA01
Slinger/Inproseal	149C4399G07	

Fan & Fan Cover Assembly	
Part Description	Part#
Fan	159C7100AA2
Fan Cover	128D6851AA1

Conduit & Accessories Box Assembly	
Part Description	Part#
Conduit Box	118D4408AD2

Mechanical Accessories	
Part Description	Part#
Brake	
Tachometer	

