



**GE INDUSTRIAL MOTORS**  
*a WOLONG company*

# Product Technical Information

October 11, 2022

**Data shown is for the current revision model #. Ensure your nameplate model # matches.**

<b>Model Number:</b>	<b>5KS143BAA102</b>
<b>Catalog Number:</b>	<b>M1051</b>
<b>Instruction Manual:</b>	GEI-56128
<b>Connection Diagram:</b>	GEM2034E-FIG3
<b>Outline Drawing:</b>	4002B5814GBP5202

## Accessory Connection Diagrams

<b>Bearing Thermocouple:</b>	None	<b>Heater:</b>	None
<b>RTD:</b>	None	<b>Thermistor:</b>	None
<b>Thermostat:</b>	None	<b>Winding Thermocouple:</b>	None
<b>Bearing RTD:</b>	None		

## Table of Contents

Specification	01
Performance Characteristics	02
Outline Drawing	03
Connection Drawing(s)	04
Spare parts	05

Marks:

<b>MODEL NUMBER:</b>	<b>5KS143BAA102</b>
Outline Drawing:	4002B5814GBP5202
Connection Diagram:	GEM2034E-FIG3
Instruction Book:	GEI-56128
Design Code:	14BD0040A
Type:	KS
Frame:	143TC
Phases:	3
Poles:	2
Output Power:	1.5HP 1.1KW
RPM:	3495
Voltage:	230/460
Hertz:	60
Amps - FL:	4.2/2.1
Service Factor:	1.15
Alt Service Factor:	--

<b>Estimated Weight:</b>	43 Lbs
<b>Time Rating:</b>	CONT
<b>Enclosure:</b>	TEFC
<b>Encl Construction:</b>	GP
<b>Ambient Max(°C):</b>	40
<b>Alt Ambient Max(°C):</b>	--
<b>Insulation Class:</b>	F
<b>NEMA Design:</b>	B
<b>Nominal Efficiency:</b>	84.0 %
<b>Guaranteed Efficiency:</b>	81.5 %
<b>3/4 Load Efficiency:</b>	--
<b>KVA Code:</b>	M
<b>Max KVAR:</b>	0.7
<b>Power Factor:</b>	79.0
<b>Bearing - DE:</b>	6206-2ZC3
<b>Bearing - ODE:</b>	6205-2ZC3

Enclosure is Totally Enclosed Fan-Cooled

---

Stamped Nameplate Notes:

VT 0-60 HZ NEMA MG1-31; 208V-4.4A



**Additional Information:**

2P - TC EXTN  
STANDARD FLOOR MOUNT  
C/BOX 30 CU IN-0.75 NPT  
F1 CONDUIT BOX MOUNTING  
"C" FACE AT DE ENDSHIELD AK=4 1/2"  
INVERTER DUTY PER NEMA MG1 PART 31  
ALTERNATE RATING FOR PWM CONTROL:1.0SF 40C AMBIENT  
VAR TORQUE RANGE 0-60 HZ  
SUITABLE FOR 208V -4.4 AMPS WITH 1.15 SF



**Performance Characteristics**

1st Winding 1st Connection

**Design: 14BD0040A**

**Marks:**

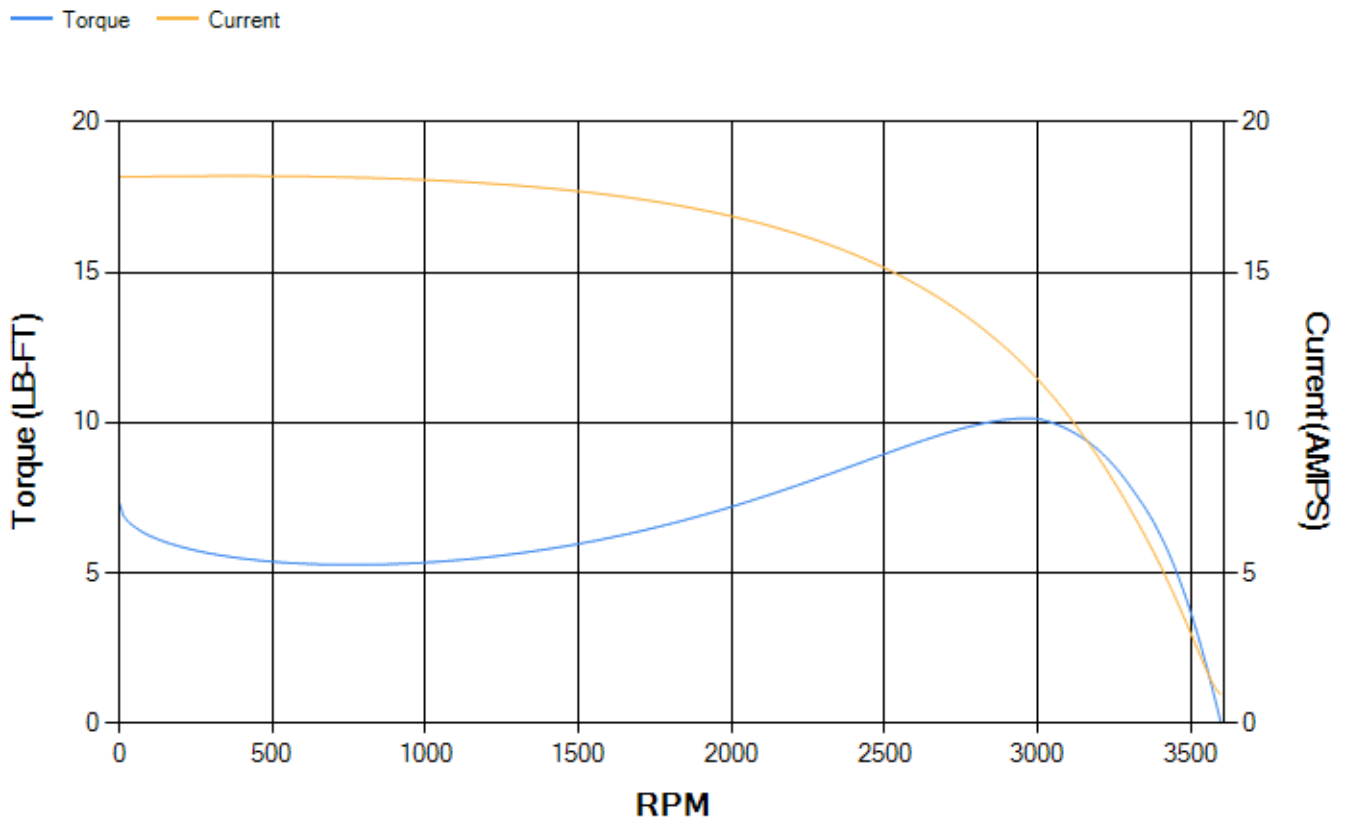
LOAD %	125.0	115.0	100.0	75.0	50.0	25.0	0.0
% EFF	84.06	84.32	84.67	83.83	80.98	71.27	0.00
% PF	83	81.57	82.69	71.62	59.46	39.52	12.53
AMPS	2.52	2.35	1.99	1.75	1.46	1.25	0.96

<b>TORQ(FL)#FT</b>	2.23	<b>TORQ(LR)%FL</b>	328.14	<b>TORQ(BD)%FL</b>	443.62
<b>AMPS(LR)</b>	18.18	<b>PF AT START</b>	0.57		

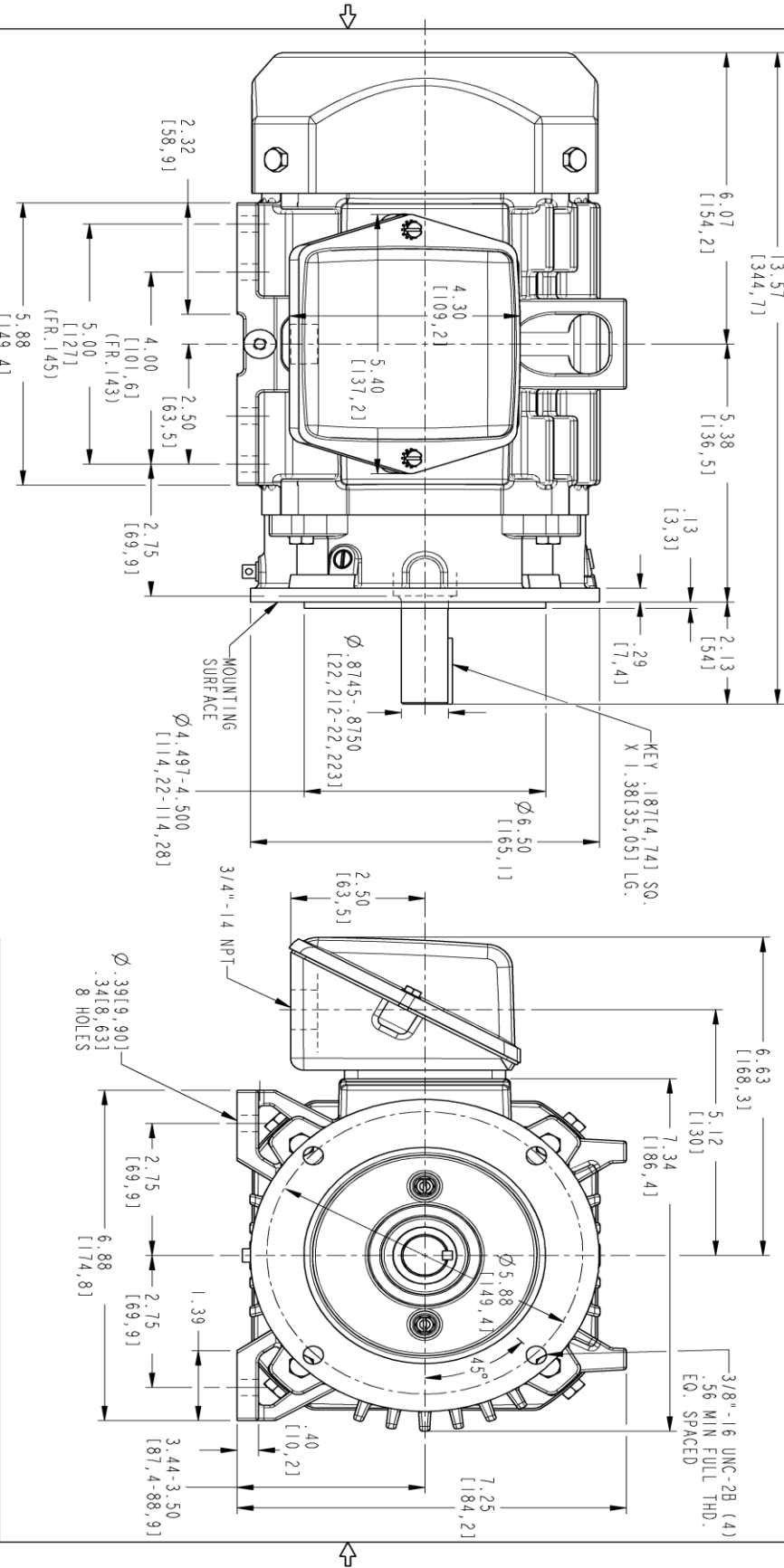
This motor is capable of two cold or one hot start with a maximum connected load inertia of 12 Lb-Ft Sq (0.51 Kg-meter Sq)at 100% voltage, where the load torque varies with the square of the speed. Acceleration time with maximum inertia and the above load type is 23 seconds. Safe stall time at 100% voltage is 50 seconds cold, 37 seconds hot. Rotor inertia is 0.04 Lb-Ft Sq (0 Kg-meter Sq).

<b>Open Circuit A-C:</b>	0.254	<b>Short Circuit D-C:</b>	0.005
<b>Short Circuit A-C:</b>	0.01	<b>X/R Ratio:</b>	1.805
<b>Stator Slots:</b>	24	<b>Rotor Slots:</b>	34

**Speed Torque Current Curve (First Connection, First Speed)**

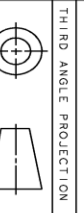


Marks:



PROPRIETARY INFORMATION  
 © COPYRIGHT 2018 Molong Electric America LLC AND/OR ITS AFFILIATES  
 All rights reserved. This document and the information it contains is the property of  
 the Molong Electric America LLC and/or its affiliates. It has been provided solely for  
 your use and is not to be distributed, copied, or otherwise used for any other purpose  
 without the express written consent of Molong Electric America LLC. Any other use is  
 strictly prohibited except as expressly authorized in writing by  
 the Molong Electric America LLC.

SIZE DRAWING NO.	B
REV	000
SHEET	1
DESCRIPTION	INDUCTION MOTOR OUTLINE
DATE	
APPROVED	



THIRD ANGLE PROJECTION

NOTE 1: CONDUIT BOX MAY BE ASSEMBLED WITH ENTRANCE UP, DOWN OR TO EITHER SIDE.  
 NOTE 2: FI ASSEMBLY AS SHOWN.  
 NOTE 3: MOUNTING SURFACES WILL BE SQUARE AND CONCENTRIC WITH SHAFT WITHIN .004 T.I.R.  
 NOTE 4: SHAFT RUNOUT WILL NOT EXCEED .002 T.I.R.  
 NOTE 5: ALL DIMENSIONS ARE IN INCHES, BRACKETED DIMENSIONS ARE IN METRIC (MILLIMETERS).

SIGNATURES	DATE
MODEL	KALIDAS 03/12/22
DETAIL	KALIDAS 03/12/22
DESIGN	KALIDAS 03/12/22
ENG	KALIDAS 03/12/22
QC	
ISSUED	KALIDAS 03/12/22
SOLID MODEL:	4002B5814GBP5202

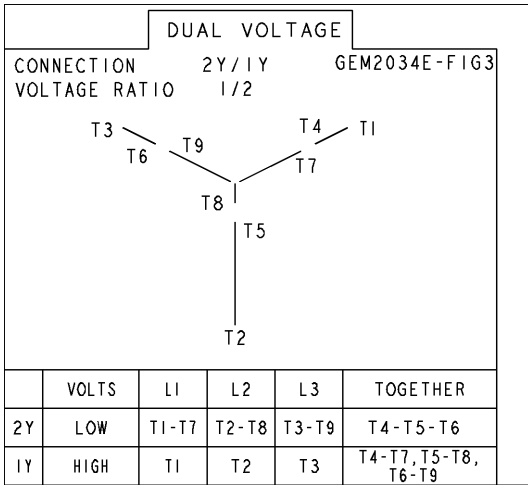


INDUCTION MOTOR OUTLINE  
 GE CONSTRUCTION

FR MOTOR TFC C-FACE/450 RABBIT30 CU IN BOX  
 SCALE: 0.500 REF. No.: 4002B5814GBP5201

Marks:

**Connection Diagram**  
**GEM2034E-FIG3**



End shield Assembly		
Part Description	DE Side Part#	ODE Side Part#
End Shield	4004D5289PA1	4004D5280SB1
Bearing	235A2602AA02	235A2600AA02
Slinger/Inproseal		

Fan & Fan Cover Assembly	
Part Description	Part#
Fan	4001A5914AM-G01
Fan Cover	4003C5808PA1

Conduit & Accessories Box Assembly	
Part Description	Part#
Conduit Box	4002B5718PX-G01

Mechanical Accessories	
Part Description	Part#
Brake	
Tachometer	

