



**GE INDUSTRIAL MOTORS**  
a **WOLONG** company

# Product Technical Information

October 11, 2022

Data shown is for the current revision model #. Ensure your nameplate model # matches.

<b>Model Number:</b>	<b>5KS182BAA200</b>
<b>Catalog Number:</b>	<b>M1058</b>
<b>Instruction Manual:</b>	GEI-56128
<b>Connection Diagram:</b>	GEM2034E-FIG3
<b>Outline Drawing:</b>	4002B5818GBP5202

## Accessory Connection Diagrams

<b>Bearing Thermocouple:</b>	None	<b>Heater:</b>	None
<b>RTD:</b>	None	<b>Thermistor:</b>	None
<b>Thermostat:</b>	None	<b>Winding Thermocouple:</b>	None
<b>Bearing RTD:</b>	None		

## Table of Contents

Specification	01
Performance Characteristics	02
Outline Drawing	03
Connection Drawing(s)	04
Spare parts	05

Marks:

<b>MODEL NUMBER:</b>	<b>5KS182BAA200</b>
Outline Drawing:	4002B5818GBP5202
Connection Diagram:	GEM2034E-FIG3
Instruction Book:	GEI-56128
Design Code:	18BD1124AA
Type:	KS
Frame:	182TC
Phases:	3
Poles:	4
Output Power:	3HP 2.2KW
RPM:	1765
Voltage:	230/460
Hertz:	60
Amps - FL:	8.0/4.0
Service Factor:	1.15
Alt Service Factor:	--

<b>Estimated Weight:</b>	76 Lbs
<b>Time Rating:</b>	CONT
<b>Enclosure:</b>	TEFC
<b>Encl Construction:</b>	GP
<b>Ambient Max(°C):</b>	40
<b>Alt Ambient Max(°C):</b>	--
<b>Insulation Class:</b>	F
<b>NEMA Design:</b>	B
<b>Nominal Efficiency:</b>	89.5 %
<b>Guaranteed Efficiency:</b>	87.5 %
<b>3/4 Load Efficiency:</b>	--
<b>KVA Code:</b>	K
<b>Max KVAR:</b>	1.3
<b>Power Factor:</b>	78.0
<b>Bearing - DE:</b>	6307-2ZC3
<b>Bearing - ODE:</b>	6206-2ZC3

Enclosure is Totally Enclosed Fan-Cooled

---

Stamped Nameplate Notes:

VT 0-60 HZ NEMA MG1-31; 208V-8.4A



**Additional Information:**

4P - TC EXTN  
STANDARD FLOOR MOUNT  
C/BOX 30 CU IN-0.75 NPT  
F1 CONDUIT BOX MOUNTING  
"C" FACE AT DE ENDSHIELD AK=8 1/2"  
INVERTER DUTY PER NEMA MG1 PART 31  
ALTERNATE RATING FOR PWM CONTROL:1.0SF 40C AMBIENT  
VAR TORQUE RANGE 0-60 HZ  
SUITABLE FOR 208V-8.4 AMPS WITH 1.15 SF



**Performance Characteristics**

1st Winding 1st Connection

**Design: 18BD1124AA**

**Marks:**

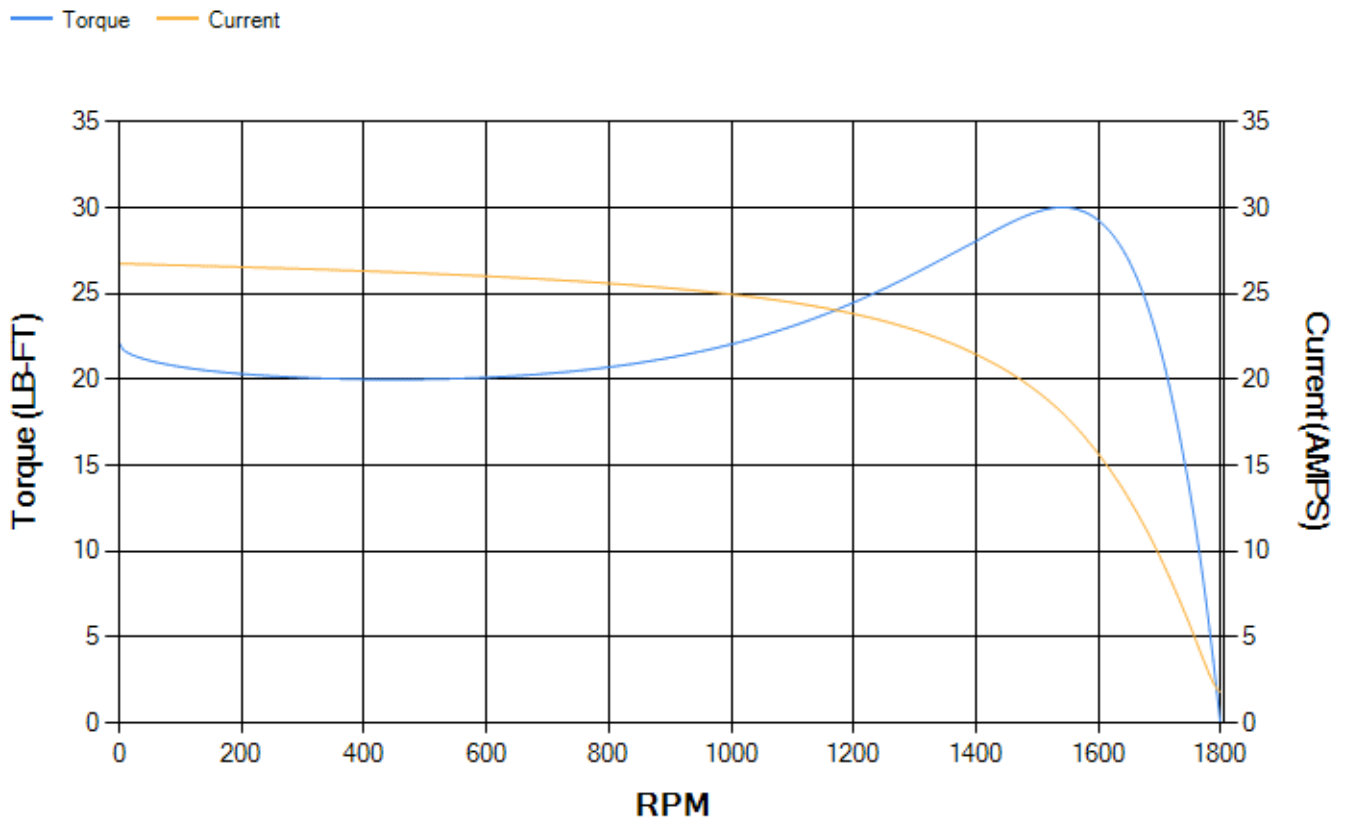
LOAD %	125.0	115.0	100.0	75.0	50.0	25.0	0.0
% EFF	88.75	89.13	89.75	89.66	88.36	82.35	0.00
% PF	81.25	80.3	79.69	72.28	60.86	39.83	7.34
AMPS	4.87	4.51	3.93	3.25	2.61	2.14	1.82

<b>TORQ(FL)#FT</b>	8.93	<b>TORQ(LR)%FL</b>	247.74	<b>TORQ(BD)%FL</b>	333.6
<b>AMPS(LR)</b>	26.76	<b>PF AT START</b>	0.52		

This motor is capable of two cold or one hot start with a maximum connected load inertia of 160 Lb-Ft Sq (6.74 Kg-meter Sq)at 100% voltage, where the load torque varies with the square of the speed. Acceleration time with maximum inertia and the above load type is 47 seconds. Safe stall time at 100% voltage is 105 seconds cold, 83 seconds hot. Rotor inertia is 0.28 Lb-Ft Sq (0.01 Kg-meter Sq).

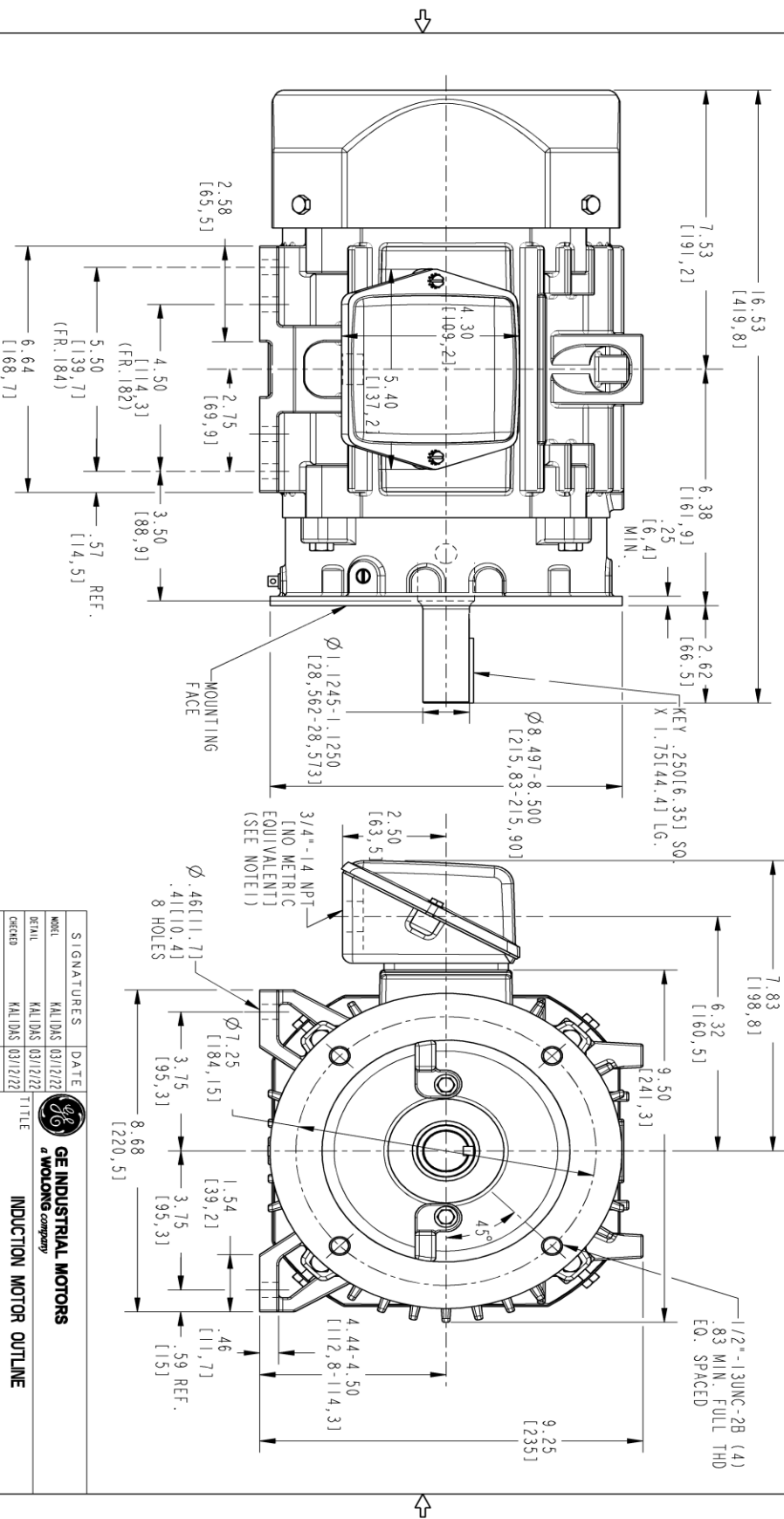
<b>Open Circuit A-C:</b>	0.27	<b>Short Circuit D-C:</b>	0.009
<b>Short Circuit A-C:</b>	0.014	<b>X/R Ratio:</b>	3.257
<b>Stator Slots:</b>	36	<b>Rotor Slots:</b>	28

**Speed Torque Current Curve (First Connection, First Speed)**



Marks:

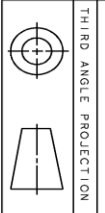
NOTE 1: CONDUIT BOX MAY BE ASSEMBLED WITH ENTRANCE UP, DOWN OR TO EITHER SIDE.  
 NOTE 2: F1 ASSEMBLY AS SHOWN.  
 NOTE 3: MOUNTING SURFACES WILL BE SQUARE AND CONCENTRIC WITH SHAFT WITHIN .004 T.I.R.  
 NOTE 4: SHAFT RUNOUT WILL NOT EXCEED .002 T.I.R.  
 NOTE 5: ALL DIMENSIONS ARE IN INCHES. BRACKETED DIMENSIONS ARE IN METRIC [MILLIMETERS].



PROPRIETARY INFORMATION  
 © COPYRIGHT 2018 Wolog Electric America LLC AND/OR ITS AFFILIATES. All rights reserved. This document and the information it contains is the property of Wolog Electric America LLC and/or its affiliates. It has been provided solely for transmission to the recipient for the specific purpose identified in the drawing. It is strictly prohibited to copy, reproduce, or disseminate this information in any form or by any means without the express written authorization of Wolog Electric America LLC.

REV.	DESCRIPTION	DATE	APPROVED

SIZE DRAWING NO.	B
REV	000
SHEET	1
REV	
DESCRIPTION	
DATE	
APPROVED	



SIGNATURES	DATE	<p><b>GE INDUSTRIAL MOTORS</b>                  a Wolog company</p> <p><b>INDUCTION MOTOR OUTLINE</b>                  GP CONSTRUCTION</p> <p><b>FRBOTC TFC GP ULTRA C<sup>+</sup> FACEB50<sup>+</sup> RABBIT, 30 CU. IN</b></p>
MODEL	KALIDAS 03/12/22	
DETAIL	KALIDAS 03/12/22	
CREATED	KALIDAS 03/12/22	
ENGR	KALIDAS 03/12/22	
QUALITY		
ISSUED	KALIDAS 03/12/22	SIZE DRAWING
SOLID MODEL	4002B5818GBP5202	SCALE: 0.400
		REF. No.: 4002B5818BP5201
		SHEET 1 of 1

Marks:

**Connection Diagram**  
**GEM2034E-FIG3**



End shield Assembly		
Part Description	DE Side Part#	ODE Side Part#
End Shield	4004D5286PA1	4004D5281SB1
Bearing	235A2601AA02	235A2602AA02
Slinger/Inproseal		

Fan & Fan Cover Assembly	
Part Description	Part#
Fan	346L620AN-G01
Fan Cover	4003C5807PA1

Conduit & Accessories Box Assembly	
Part Description	Part#
Conduit Box	4002B5718PX-G01

Mechanical Accessories	
Part Description	Part#
Brake	
Tachometer	

