



GE INDUSTRIAL MOTORS
a **WOLONG** company

Product Technical Information

May 2, 2023

Data shown is for the current revision model #. Ensure your nameplate model # matches.

Model Number:	5KS444BAA308
Catalog Number:	M1131
Instruction Manual:	GEI-56128
Connection Diagram:	GEM2034E-FIG7
Outline Drawing:	239CG700AA

Accessory Connection Diagrams

Bearing Thermocouple:	None	Heater:	None
RTD:	None	Thermistor:	None
Thermostat:	None	Winding Thermocouple:	None
Bearing RTD:	None		

Table of Contents

Specification	01
Performance Characteristics	02
Outline Drawing	03
Connection Drawing(s)	04
Spare parts	05

Marks:

MODEL NUMBER: 5KS444BAA308
Outline Drawing: 239CG700AA
Connection Diagram: GEM2034E-FIG7
Instruction Book: GEI-56128
Design Code: 44BD3081A
Type: KS
Frame: 444T
Phases: 3
Poles: 6
Output Power: 100HP 74KW
RPM: 1190
Voltage: 460
Hertz: 60
Amps - FL: 122.0
Service Factor: 1.15
Alt Service Factor: --

Estimated Weight: 1880 Lbs
Time Rating: CONT
Enclosure: TEFC
Encl Construction: GP
Ambient Max(°C): 40
Alt Ambient Max(°C): --
Insulation Class: F
NEMA Design: B
Nominal Efficiency: 95.0 %
Guaranteed Efficiency: --
3/4 Load Efficiency: --
KVA Code: G
Max KVAR: 35.8
Power Factor: 81.0
Bearing - DE: 6318ZC3
Bearing - ODE: 6314ZC3

Enclosure is Totally Enclosed Fan-Cooled

Stamped Nameplate Notes:

VT 0-60 HZ NEMA MG1-31



Additional Information:

6P - T EXTN
C/BOX 700 CU IN - 3.00" NPT
F1 MOUNTING
INVERTER DUTY PER NEMA MG1 PART 31
ALTERNATE RATING FOR PWM CONTROL:1.0SF 40C AMBIENT
VAR TORQUE RANGE 0-60 HZ



Performance Characteristics

1st Winding 1st Connection

Design: 44BD3081A

Marks:

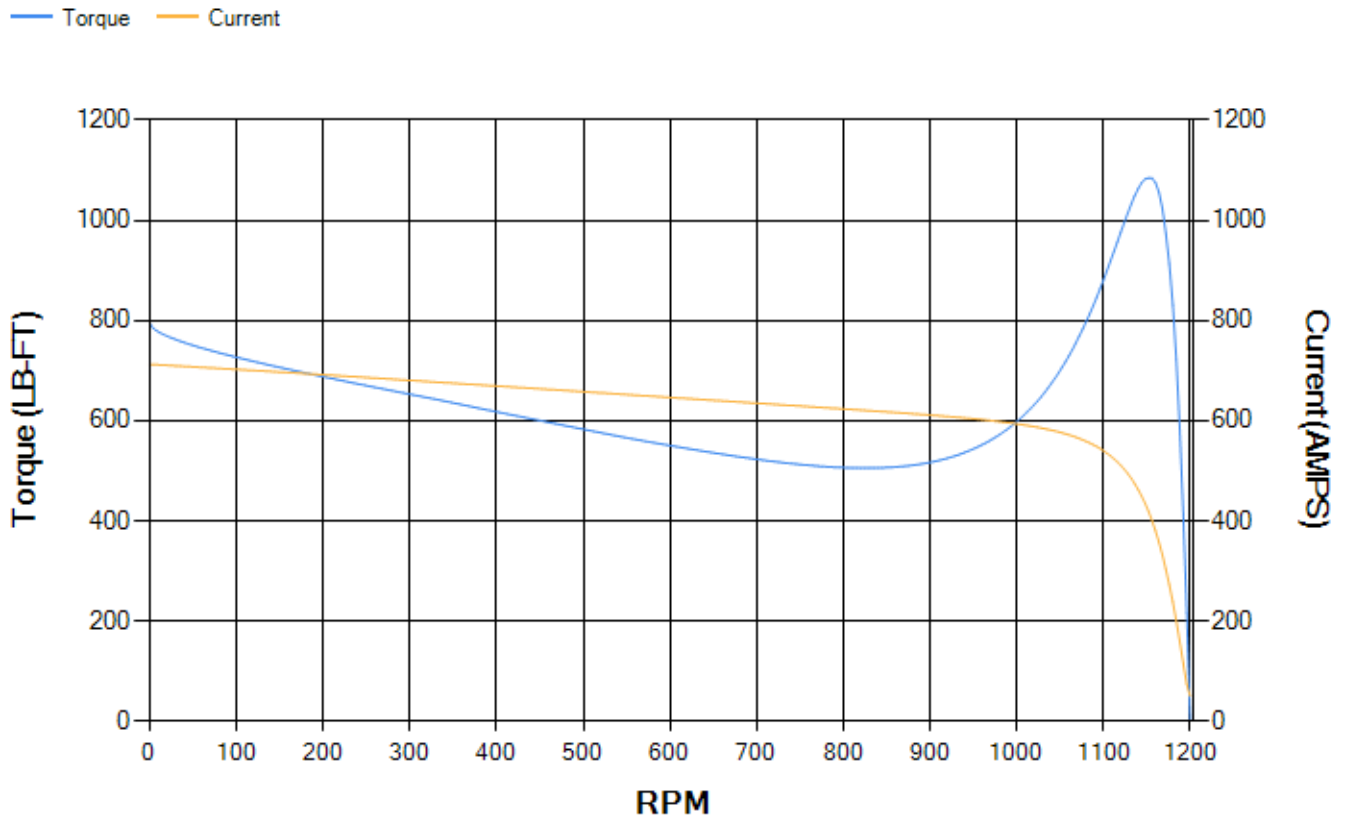
LOAD %	125.0	115.0	100.0	75.0	50.0	25.0	0.0
% EFF	94.38	94.61	95.09	95.09	94.64	91.92	0.00
% PF	83.04	82.53	81.2	76.65	66.48	44.18	3.53
AMPS	149.29	137.84	121.22	96.31	74.38	57.61	49.89

TORQ(FL)#FT	440.81	TORQ(LR)%FL	180.49	TORQ(BD)%FL	245.76
AMPS(LR)	712.54	PF AT START	0.34		

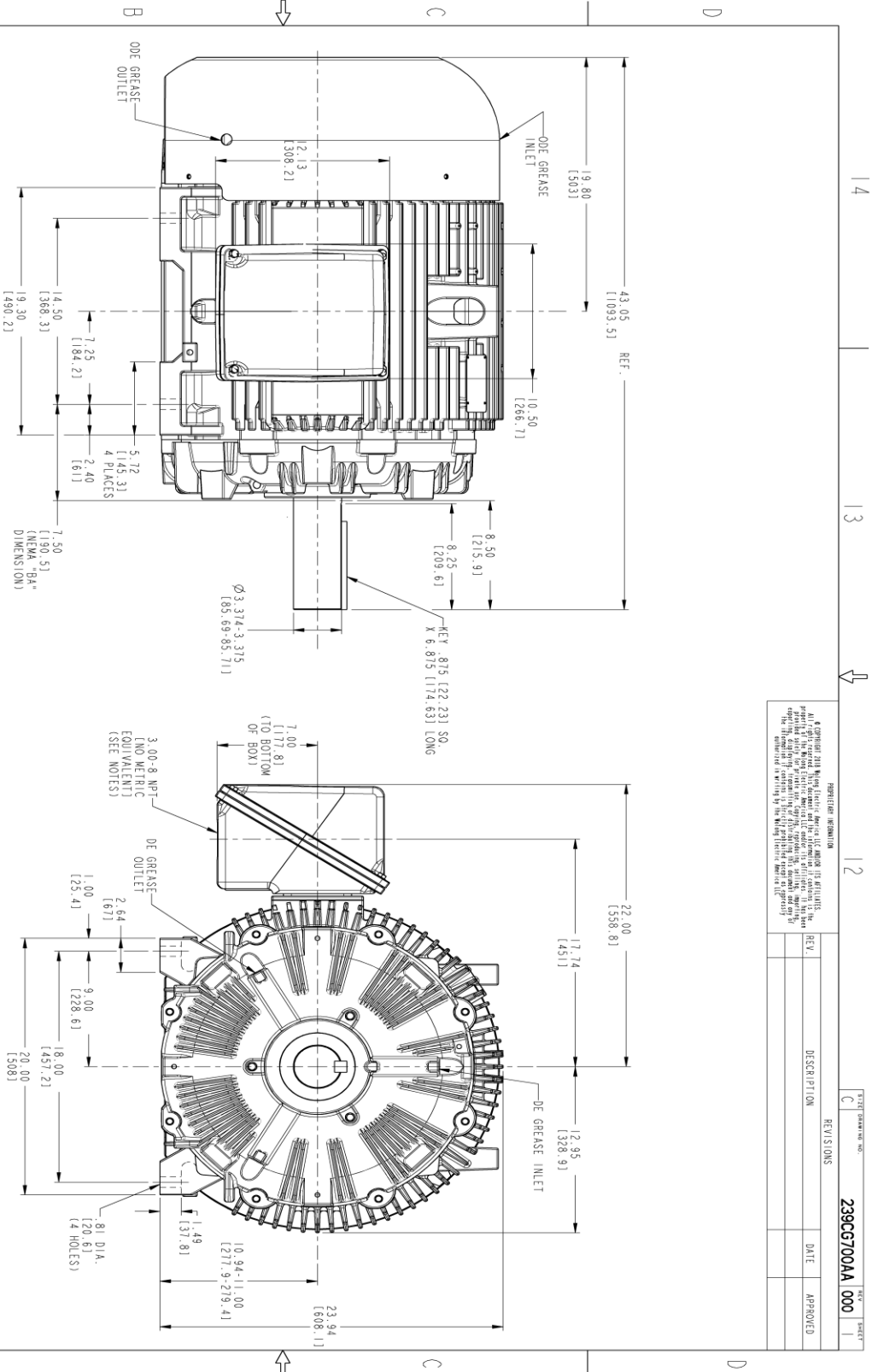
This motor is capable of two cold or one hot start with a maximum connected load inertia of 5269 Lb-Ft Sq (221.82 Kg-meter Sq)at 100% voltage, where the load torque varies with the square of the speed. Acceleration time with maximum inertia and the above load type is 42 seconds. Safe stall time at 100% voltage is 83 seconds cold, 51 seconds hot. Rotor inertia is 77.95 Lb-Ft Sq (3.28 Kg-meter Sq).

Open Circuit A-C:	0.821	Short Circuit D-C:	0.025
Short Circuit A-C:	0.052	X/R Ratio:	9.321
Stator Slots:	72	Rotor Slots:	58

Speed Torque Current Curve (First Connection, First Speed)



Marks:



- NOTES:
1. CONDUIT BOX MAY BE PLACED WITH THE ENTRANCE DOWN, UP OR ON EITHER SIDE.
 2. F-1 ASSEMBLY AS SHOWN.
 3. ALL DIMENSIONS ARE IN INCHES. BRACKETED DIMENSIONS ARE METRIC (MILLIMETERS).

SIGNATURES		DATE	
MODEL	UTKARSHA 07/10/22	DATE	
REV.	UTKARSHA 07/10/22	DATE	
CHECKED	KALIDAS 07/10/22	DATE	
DWG	SACHIN 07/10/22	DATE	
ISSUED	UTKARSHA 07/10/22	DATE	
QUALITY		DATE	
SCALE: 0.200	REF. No: 239CG700AA	DATE	



GE INDUSTRIAL MOTORS
444T GP CONSTRUCTION
TFC GP, 700 CU IN. C-BOX
239CG700AA 000

SHEET 1 OF 1

Marks:

Connection Diagram
GEM2034E-FIG7



End shield Assembly		
Part Description	DE Side Part#	ODE Side Part#
End Shield	115E4355AA1	115E4354ZA1
Bearing	235A2614AA01	235A2616AA01
Slinger/Inproseal	149C4399G07	

Fan & Fan Cover Assembly	
Part Description	Part#
Fan	159C7100G03
Fan Cover	128D6851AA1

Conduit & Accessories Box Assembly	
Part Description	Part#
Conduit Box	118D4408AD2

Mechanical Accessories	
Part Description	Part#
Brake	
Tachometer	

