



GE INDUSTRIAL MOTORS
a **WOLONG** company

Product Technical Information

May 2, 2023

Data shown is for the current revision model #. Ensure your nameplate model # matches.

Model Number:	5KS447BAA308
Catalog Number:	M1137
Instruction Manual:	GEI-56128
Connection Diagram:	GEM2034E-FIG8
Outline Drawing:	239CGJ00AA

Accessory Connection Diagrams

Bearing Thermocouple:	None	Heater:	None
RTD:	None	Thermistor:	None
Thermostat:	None	Winding Thermocouple:	None
Bearing RTD:	None		

Table of Contents

Specification	01
Performance Characteristics	02
Outline Drawing	03
Connection Drawing(s)	04
Spare parts	05

Marks:

MODEL NUMBER:	5KS447BAA308
Outline Drawing:	239CGJ00AA
Connection Diagram:	GEM2034E-FIG8
Instruction Book:	GEI-56128
Design Code:	49BD3192A
Type:	KS
Frame:	447T
Phases:	3
Poles:	6
Output Power:	150HP 111KW
RPM:	1190
Voltage:	460
Hertz:	60
Amps - FL:	172.0
Service Factor:	1.15
Alt Service Factor:	--

Estimated Weight:	2850 Lbs
Time Rating:	CONT
Enclosure:	TEFC
Encl Construction:	GP
Ambient Max(°C):	40
Alt Ambient Max(°C):	--
Insulation Class:	F
NEMA Design:	B
Nominal Efficiency:	95.8 %
Guaranteed Efficiency:	95.0 %
3/4 Load Efficiency:	--
KVA Code:	G
Max KVAR:	41.7
Power Factor:	85.0
Bearing - DE:	6318ZC3
Bearing - ODE:	6314ZC3

Enclosure is Totally Enclosed Fan-Cooled

Stamped Nameplate Notes:

VT 0-60 HZ NEMA MG1-31



Additional Information:

6P - T EXTN - SPLIT LEAD
C/BOX 700 CU IN - 3.00" NPT
F1 MOUNTING
INVERTER DUTY PER NEMA MG1 PART 31
ALTERNATE RATING FOR PWM CONTROL:1.0SF 40C AMBIENT
VAR TORQUE RANGE 0-60 HZ



Performance Characteristics

1st Winding 1st Connection

Design: 49BD3192A

Marks:

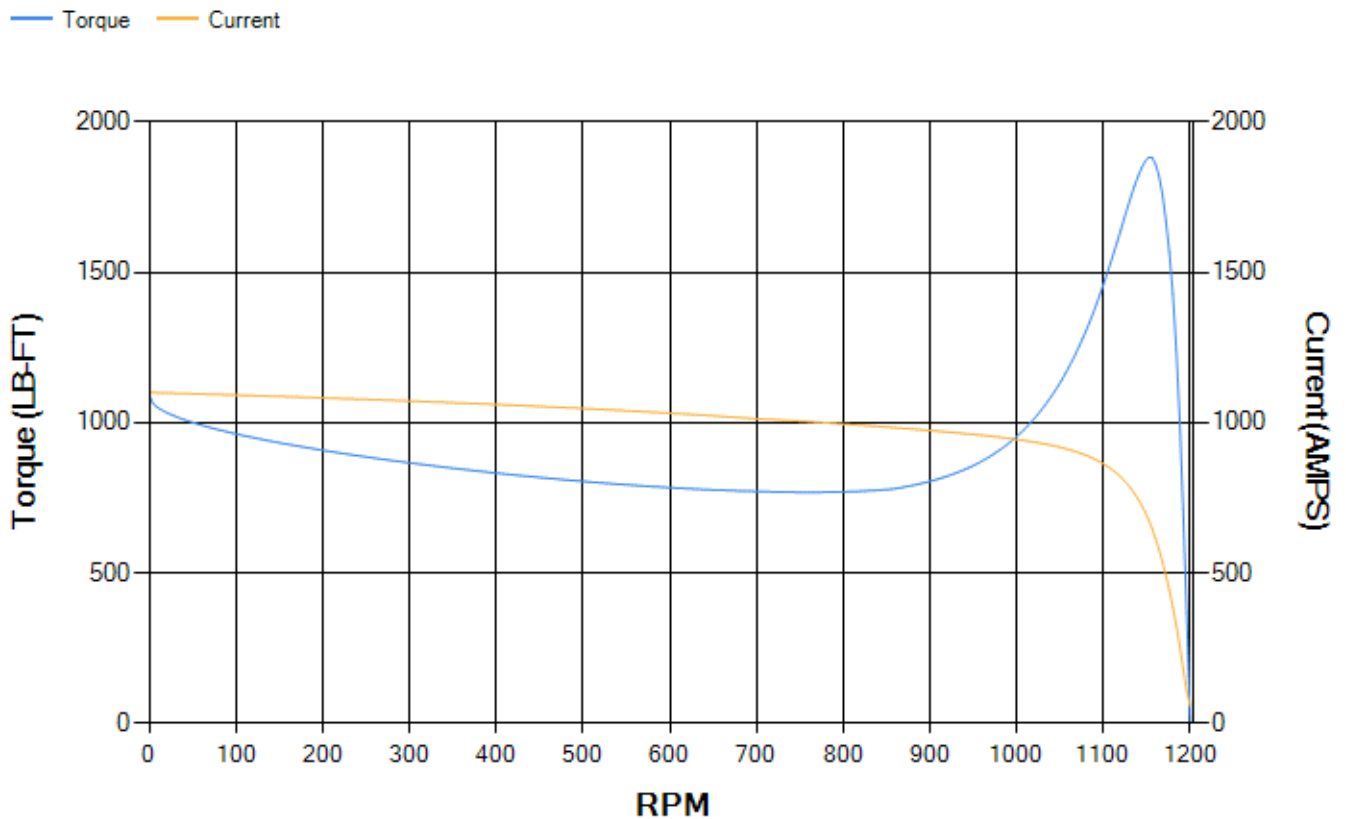
LOAD %	125.0	115.0	100.0	75.0	50.0	25.0	0.0
% EFF	95.39	95.58	96.02	96	95.67	93.49	0.00
% PF	86.29	86.04	85.2	81.94	73.72	52.3	3.63
AMPS	213.19	196.32	171.61	133.86	99.54	71.78	58.09

TORQ(FL)#FT	660.44	TORQ(LR)%FL	164.6	TORQ(BD)%FL	285.01
AMPS(LR)	1100.27	PF AT START	0.27		

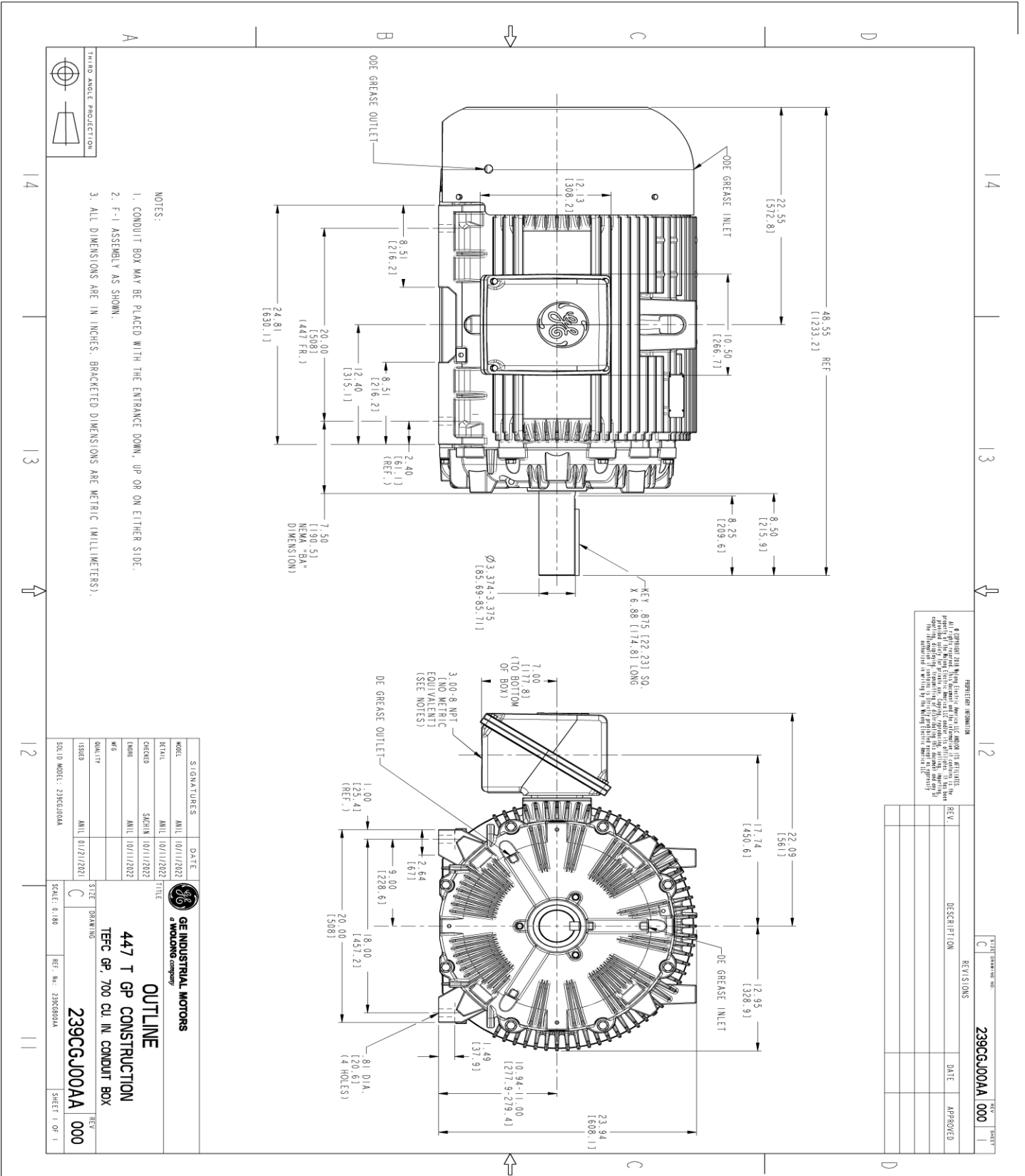
This motor is capable of two cold or one hot start with a maximum connected load inertia of 15153 Lb-Ft Sq (637.94 Kg-meter Sq)at 100% voltage, where the load torque varies with the square of the speed. Acceleration time with maximum inertia and the above load type is 84 seconds. Safe stall time at 100% voltage is 151 seconds cold, 101 seconds hot. Rotor inertia is 163.21 Lb-Ft Sq (6.87 Kg-meter Sq).

Open Circuit A-C:	1.21	Short Circuit D-C:	0.035
Short Circuit A-C:	0.058	X/R Ratio:	13.278
Stator Slots:	72	Rotor Slots:	58

Speed Torque Current Curve (First Connection, First Speed)

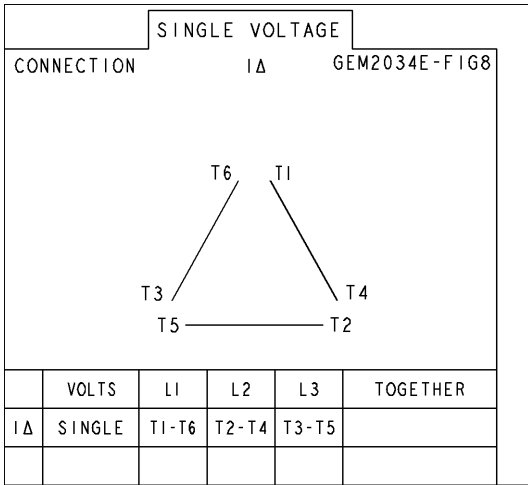


Marks:



Marks:

Connection Diagram
GEM2034E-FIG8



End shield Assembly		
Part Description	DE Side Part#	ODE Side Part#
End Shield	115E4355AA1	115E4354ZA1
Bearing	235A2614AA01	235A2616AA01
Slinger/Inproseal	149C4399G07	

Fan & Fan Cover Assembly	
Part Description	Part#
Fan	159C7100G03
Fan Cover	128D6851AA1

Conduit & Accessories Box Assembly	
Part Description	Part#
Conduit Box	118D4408AD2

Mechanical Accessories	
Part Description	Part#
Brake	
Tachometer	

