



GE INDUSTRIAL MOTORS
a **WOLONG** company

Product Technical Information

September 8, 2022

Data shown is for the current revision model #. Ensure your nameplate model # matches.

Model Number:	5KS215BAA105
Catalog Number:	M1147
Instruction Manual:	GEI-56128
Connection Diagram:	GEM2034E-FIG3
Outline Drawing:	4002B5821PAR5201

Accessory Connection Diagrams

Bearing Thermocouple:	None	Heater:	None
RTD:	None	Thermistor:	None
Thermostat:	None	Winding Thermocouple:	None
Bearing RTD:	None		

Table of Contents

Specification	01
Performance Characteristics	02
Outline Drawing	03
Connection Drawing(s)	04
Spare parts	05

Marks:

MODEL NUMBER:	5KS215BAA105	Estimated Weight:	220 Lbs
Outline Drawing:	4002B5821PAR5201	Time Rating:	CONT
Connection Diagram:	GEM2034E-FIG3	Enclosure:	TEFC
Instruction Book:	GEI-56128	Encl Construction:	GP
Design Code:	21BD0226A	Ambient Max(°C):	40
Type:	KS	Alt Ambient Max(°C):	--
Frame:	215T	Insulation Class:	F
Phases:	3	NEMA Design:	B
Poles:	2	Nominal Efficiency:	90.2 %
Output Power:	10HP 7.4KW	Guaranteed Efficiency:	88.5 %
RPM:	3530	3/4 Load Efficiency:	--
Voltage:	230/460	KVA Code:	H
Hertz:	60	Max KVAR:	2.3
Amps - FL:	23.2/11.6	Power Factor:	89.5
Service Factor:	1.15	Bearing - DE:	6208-2ZC3
Alt Service Factor:	--	Bearing - ODE:	6208-2ZC3

Enclosure is Totally Enclosed Fan-Cooled

Stamped Nameplate Notes:

VT 0-60 HZ NEMA MG1-31; 208V-23.2A



Additional Information:

2P - T EXTN
STANDARD FLOOR MOUNT
C/BOX 55 CU IN-1.00 NPT
F1 CONDUIT BOX MOUNTING
INVERTER DUTY PER NEMA MG1 PART 31
ALTERNATE RATING FOR PWM CONTROL:1.0SF 40C AMBIENT
VAR TORQUE RANGE 0-60 HZ
SUITABLE FOR 208V-23.2 AMPS WITH 1.15 SF



Performance Characteristics

1st Winding 1st Connection

Design: 21BD0226A

Marks:

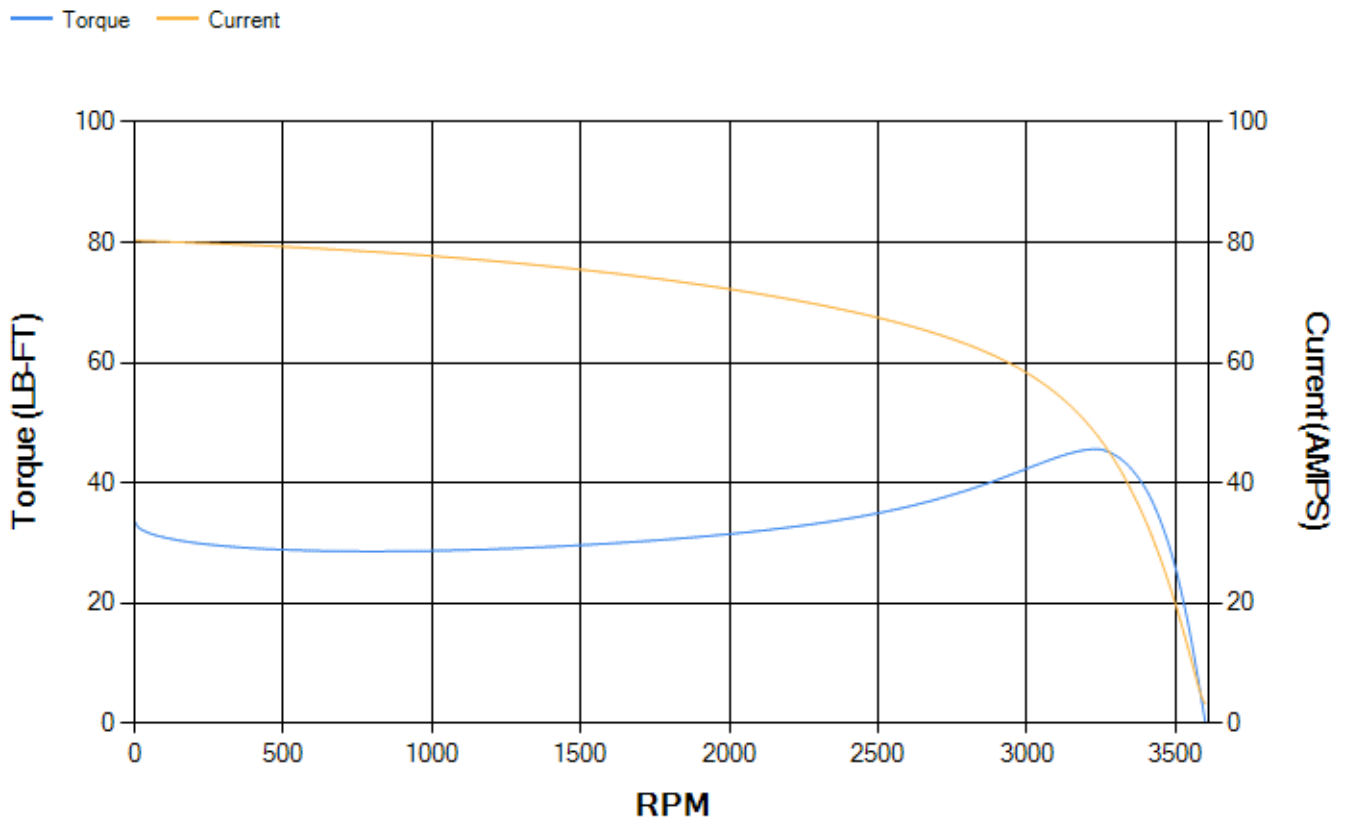
LOAD %	125.0	115.0	100.0	75.0	50.0	25.0	0.0
% EFF	89.41	89.96	90.85	91.36	91.03	87.27	0.00
% PF	90.27	90.19	89.71	87.47	81.2	62.4	8.91
AMPS	14.5	13.27	11.47	8.78	6.33	4.3	3.2

TORQ(FL)#FT	14.87	TORQ(LR)%FL	225.98	TORQ(BD)%FL	304.23
AMPS(LR)	80.29	PF AT START	0.37		

This motor is capable of two cold or one hot start with a maximum connected load inertia of 84 Lb-Ft Sq (3.54 Kg-meter Sq)at 100% voltage, where the load torque varies with the square of the speed. Acceleration time with maximum inertia and the above load type is 35 seconds. Safe stall time at 100% voltage is 64 seconds cold, 42 seconds hot. Rotor inertia is 0.42 Lb-Ft Sq (0.02 Kg-meter Sq).

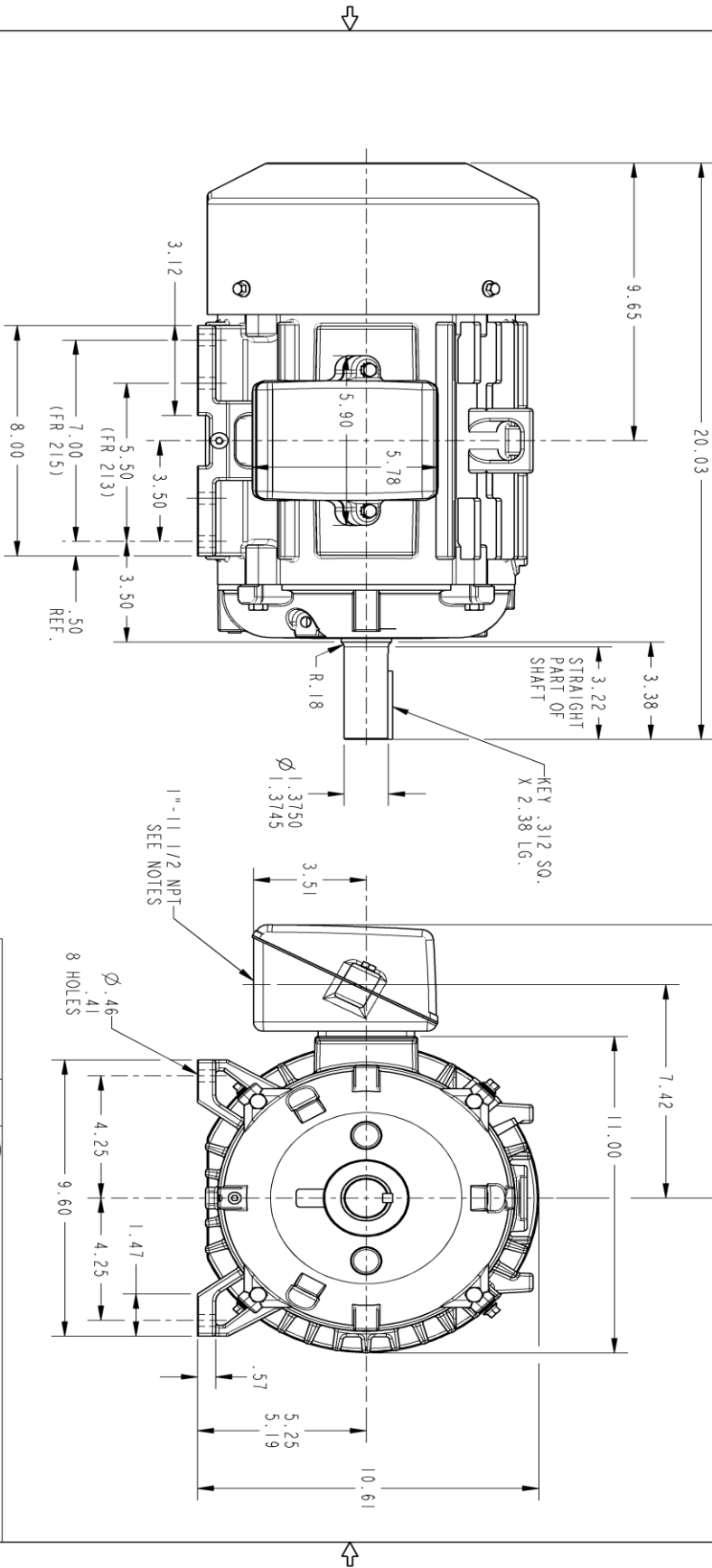
Open Circuit A-C:	0.494	Short Circuit D-C:	0.01
Short Circuit A-C:	0.017	X/R Ratio:	3.763
Stator Slots:	36	Rotor Slots:	26

Speed Torque Current Curve (First Connection, First Speed)



Marks:

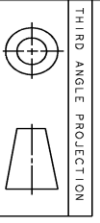
NOTE 1: CONDUIT BOX MAY BE ASSEMBLED WITH ENTRANCE UP, DOWN OR TO EITHER SIDE.
NOTE 2: F1 ASSEMBLY AS SHOWN.



PROPRIETARY INFORMATION
All rights reserved. This document and the information it contains is the property of the Motorg Electric America LLC and/or its affiliates. It has been provided solely for transmission to the recipient for their use only. No other use, reproduction, or distribution is permitted without the express written consent of the Motorg Electric America LLC. Any use, reproduction, or distribution of this information is strictly prohibited except as expressly authorized in writing by the Motorg Electric America LLC.

REV.	DESCRIPTION	DATE	APPROVED

SIZE	DRAWING NO.	REV	SHEET
B	4002B5821PAR5201	0	1



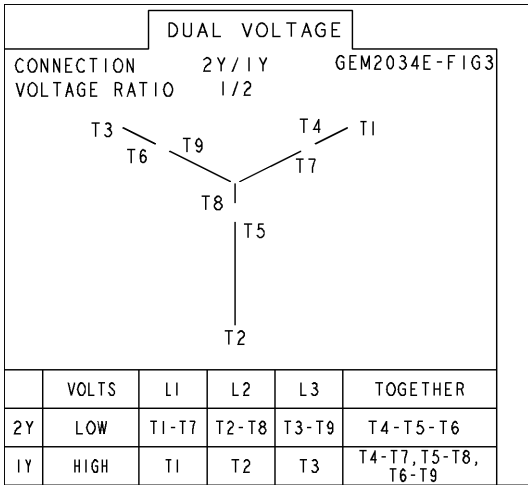
THIRD ANGLE PROJECTION

ALL DIMENSIONS ARE IN INCHES

SIGNATURES	DATE	<p>GE INDUSTRIAL MOTORS a wolong company</p> <p>INDUCTION MOTOR OUTLINE GP CONSTRUCTION</p> <p>PMF: FR 215/215 T TEFC</p>
MODEL	DHEFRABJ 250221	
DETAIL	VILANT 250221	
ENGR		
QC		
QUALITY	DHEFRABJ 250221	SIZE/DRAWING
ISSUED	B	4002B5821PAR5201
SOLID MODEL: 4002B5821PAR5201	SCALE: 0.300	REV
	REF. No.: 4002B5821PAR201	0
		SHEET 1 of 1

Marks:

Connection Diagram
GEM2034E-FIG3



End shield Assembly		
Part Description	DE Side Part#	ODE Side Part#
End Shield	4004D5282PA1	4004D5282SB1
Bearing	235A2603AA02	235A2603AA02
Slinger/Inproseal	149C4399G01	

Fan & Fan Cover Assembly	
Part Description	Part#
Fan	159C6704G01
Fan Cover	4003C5806PA1

Conduit & Accessories Box Assembly	
Part Description	Part#
Conduit Box	4002B5721PT-G01

Mechanical Accessories	
Part Description	Part#
Brake	
Tachometer	

