



**GE INDUSTRIAL MOTORS**  
a **WOLONG** company

# Product Technical Information

May 2, 2023

Data shown is for the current revision model #. Ensure your nameplate model # matches.

<b>Model Number:</b>	<b>5KS324BAA305</b>
<b>Catalog Number:</b>	<b>M1158</b>
<b>Instruction Manual:</b>	GEI-56128
<b>Connection Diagram:</b>	GEM2034E-FIG9
<b>Outline Drawing:</b>	239CG000AB

## Accessory Connection Diagrams

<b>Bearing Thermocouple:</b>	None	<b>Heater:</b>	None
<b>RTD:</b>	None	<b>Thermistor:</b>	None
<b>Thermostat:</b>	None	<b>Winding Thermocouple:</b>	None
<b>Bearing RTD:</b>	None		

## Table of Contents

Specification	01
Performance Characteristics	02
Outline Drawing	03
Connection Drawing(s)	04
Spare parts	05

Marks:

<b>MODEL NUMBER:</b>	<b>5KS324BAA305</b>	<b>Estimated Weight:</b>	660 Lbs
<b>Outline Drawing:</b>	239CG000AB	<b>Time Rating:</b>	CONT
<b>Connection Diagram:</b>	GEM2034E-FIG9	<b>Enclosure:</b>	TEFC
<b>Instruction Book:</b>	GEI-56128	<b>Encl Construction:</b>	GP
<b>Design Code:</b>	32BD3099A	<b>Ambient Max(°C):</b>	40
<b>Type:</b>	KS	<b>Alt Ambient Max(°C):</b>	--
<b>Frame:</b>	324T	<b>Insulation Class:</b>	F
<b>Phases:</b>	3	<b>NEMA Design:</b>	B
<b>Poles:</b>	6	<b>Nominal Efficiency:</b>	93.0 %
<b>Output Power:</b>	25HP 18.5KW	<b>Guaranteed Efficiency:</b>	--
<b>RPM:</b>	1180	<b>3/4 Load Efficiency:</b>	--
<b>Voltage:</b>	230/460	<b>KVA Code:</b>	G
<b>Hertz:</b>	60	<b>Max KVAR:</b>	10.3
<b>Amps - FL:</b>	64.2/32.1	<b>Power Factor:</b>	78.5
<b>Service Factor:</b>	1.15	<b>Bearing - DE:</b>	6312ZC3
<b>Alt Service Factor:</b>	--	<b>Bearing - ODE:</b>	6210ZC3

Enclosure is Totally Enclosed Fan-Cooled

---

Stamped Nameplate Notes:

VT 0-60 HZ NEMA MG1-31



**Additional Information:**

6P - T EXTN  
C/BOX 346 CU IN - 3.00" NPT  
F1 MOUNTING  
INVERTER DUTY PER NEMA MG1 PART 31  
ALTERNATE RATING FOR PWM CONTROL:1.0SF 40C AMBIENT  
VAR TORQUE RANGE 0-60 HZ



**Performance Characteristics**

1st Winding 1st Connection

**Design: 32BD3099A**

**Marks:**

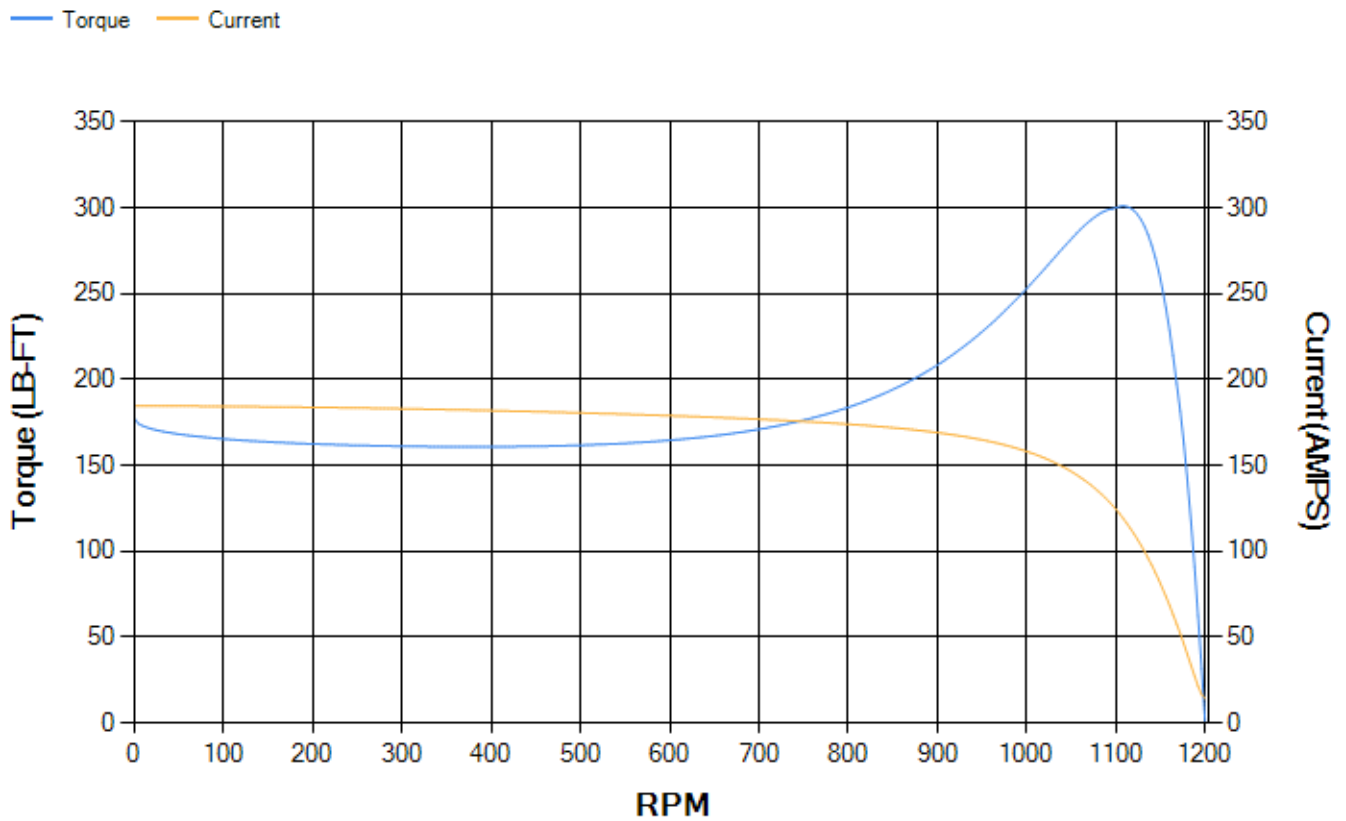
LOAD %	125.0	115.0	100.0	75.0	50.0	25.0	0.0
% EFF	92.2	92.56	93.21	93.38	92.92	89.56	0.00
% PF	81	80.3	78.6	73.26	62.21	40.3	4
AMPS	39.16	36.2	31.92	25.65	20.24	16.21	14.32

<b>TORQ(FL)#FT</b>	111.19	<b>TORQ(LR)%FL</b>	159.54	<b>TORQ(BD)%FL</b>	268.46
<b>AMPS(LR)</b>	184.74	<b>PF AT START</b>	0.33		

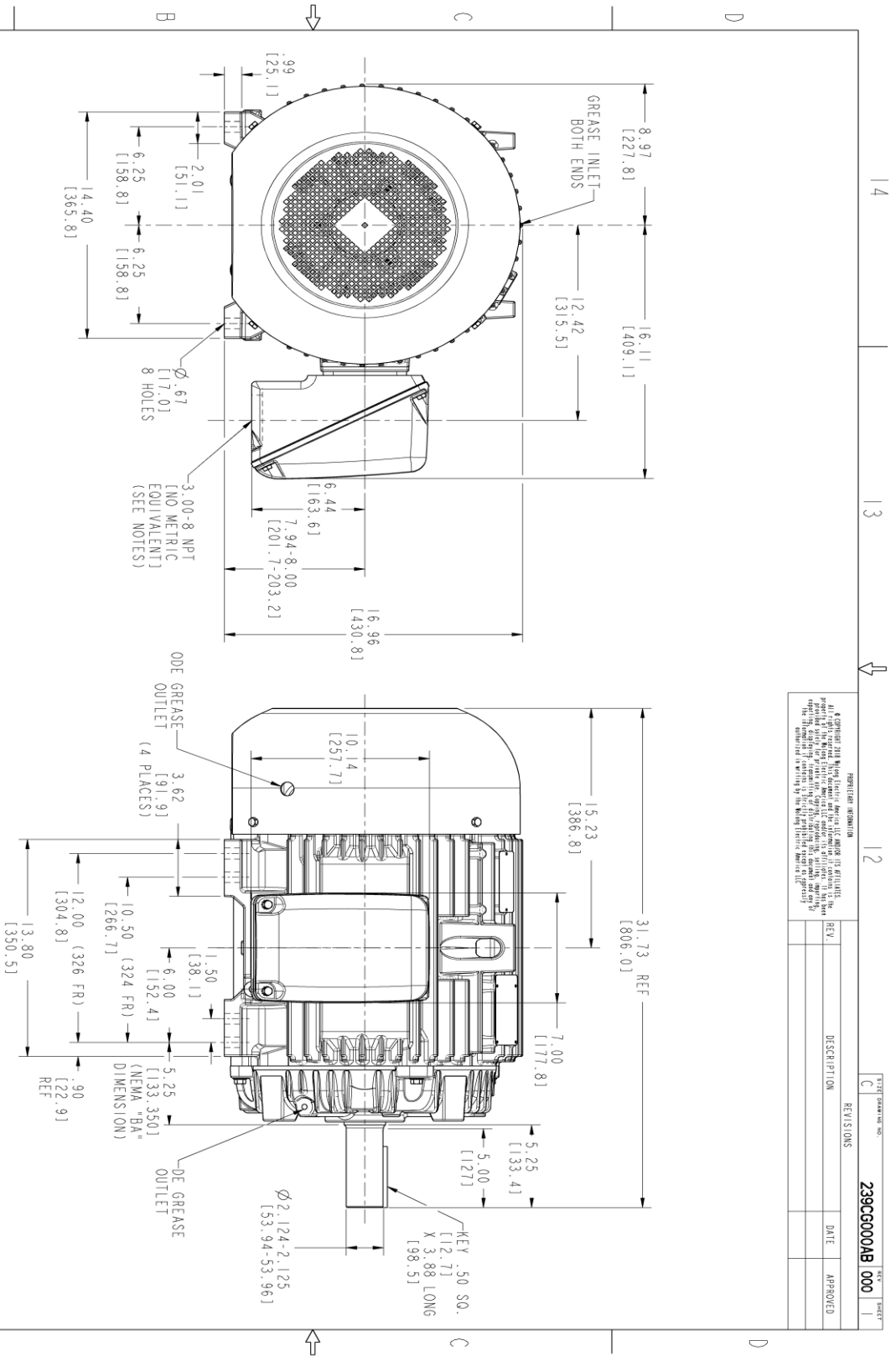
This motor is capable of two cold or one hot start with a maximum connected load inertia of 2445 Lb-Ft Sq (102.93 Kg-meter Sq)at 100% voltage, where the load torque varies with the square of the speed. Acceleration time with maximum inertia and the above load type is 62 seconds. Safe stall time at 100% voltage is 116 seconds cold, 75 seconds hot. Rotor inertia is 8.87 Lb-Ft Sq (0.37 Kg-meter Sq).

<b>Open Circuit A-C:</b>	0.34	<b>Short Circuit D-C:</b>	0.018
<b>Short Circuit A-C:</b>	0.022	<b>X/R Ratio:</b>	6.623
<b>Stator Slots:</b>	54	<b>Rotor Slots:</b>	40

**Speed Torque Current Curve (First Connection, First Speed)**



Marks:



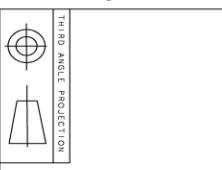
NOTES :

1. CONDUIT BOX MAY BE PLACED WITH THE ENTRANCE DOWN, UP OR ON EITHER SIDE.
2. F-1 ASW AS SHOWN.
3. ALL DIMENSIONS ARE IN INCHES. BRACKETED DIMENSIONS ARE METRIC (MILLIMETERS).

**REGISTRATION INFORMATION**  
 A copyright notice shall appear on all drawings and specifications prepared by GE Industrial Motors. It shall be the responsibility of the user to ensure that the drawings and specifications are properly registered with the appropriate authorities in the user's country. The user shall be responsible for obtaining the necessary permissions for the reproduction or use of the drawings and specifications in any form or by any means, electronic or mechanical, including photocopying, recording, or by any information storage and retrieval system, without the prior written permission of GE Industrial Motors.

REV.	DESCRIPTION	DATE	APPROVED

SHEET DRAWING NO. **239CG000AB 000**  
 REV'S/DNS  
 DATE  
 APPROVED



SIGNATURES	DATE
MODEL: UTKASHA 12/02/21	
REVIEW: UTKASHA 12/02/21	
CHECKED: KALIDAS 12/02/21	
DWG: KALIDAS 12/02/21	
W/E:	
QUALITY:	
ISSUED: UTKASHA 12/02/21	

**GE INDUSTRIAL MOTORS**  
 a WOLSKEL company

**INDUCTION MOTOR OUTLINE**  
 GP CONSTRUCTION

324/326T TFC, 346 CU IN, C-BOX

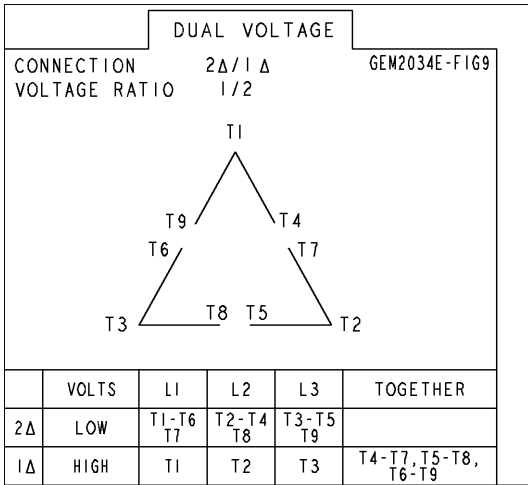
**239CG000AB**

SCALE: 0.250 REF. NO: 239CG000C

SHEET 1 OF 1

Marks:

**Connection Diagram**  
**GEM2034E-FIG9**



End shield Assembly		
Part Description	DE Side Part#	ODE Side Part#
End Shield	115E4200AA1	115E4201ZA1
Bearing	235A2609AA01	235A2610AA01
Slinger/Inproseal	149C4399G04	

Fan & Fan Cover Assembly	
Part Description	Part#
Fan	159C7000G01
Fan Cover	128D6854AA1

Conduit & Accessories Box Assembly	
Part Description	Part#
Conduit Box	149C4429AA2

Mechanical Accessories	
Part Description	Part#
Brake	
Tachometer	

