



GE INDUSTRIAL MOTORS
a **WOLONG** company

Product Technical Information

February 17, 2023

Data shown is for the current revision model #. Ensure your nameplate model # matches.

Model Number:	5KS326BAA205
Catalog Number:	M1165
Instruction Manual:	GEI-56128
Connection Diagram:	GEM2034E-FIG9
Outline Drawing:	239CG000AB

Accessory Connection Diagrams

Bearing Thermocouple:	None	Heater:	None
RTD:	None	Thermistor:	None
Thermostat:	None	Winding Thermocouple:	None
Bearing RTD:	None		

Table of Contents

Specification	01
Performance Characteristics	02
Outline Drawing	03
Connection Drawing(s)	04
Spare parts	05

Marks:

MODEL NUMBER:	5KS326BAA205	Estimated Weight:	710 Lbs
Outline Drawing:	239CG000AB	Time Rating:	CONT
Connection Diagram:	GEM2034E-FIG9	Enclosure:	TEFC
Instruction Book:	GEI-56128	Encl Construction:	GP
Design Code:	32BD1183A	Ambient Max(°C):	40
Type:	KS	Alt Ambient Max(°C):	--
Frame:	326T	Insulation Class:	F
Phases:	3	NEMA Design:	B
Poles:	4	Nominal Efficiency:	94.5 %
Output Power:	50HP 37KW	Guaranteed Efficiency:	--
RPM:	1780	3/4 Load Efficiency:	--
Voltage:	230/460	KVA Code:	G
Hertz:	60	Max KVAR:	17.7
Amps - FL:	121.6/60.8	Power Factor:	81.5
Service Factor:	1.15	Bearing - DE:	6312ZC3
Alt Service Factor:	--	Bearing - ODE:	6210ZC3

Enclosure is Totally Enclosed Fan-Cooled

Stamped Nameplate Notes:

VT 0-60 HZ NEMA MG1-31



Additional Information:

4P - T EXTN
C/BOX 346 CU IN - 3.00" NPT
F1 MOUNTING
INVERTER DUTY PER NEMA MG1 PART 31
ALTERNATE RATING FOR PWM CONTROL:1.0SF 40C AMBIENT
VAR TORQUE RANGE 0-60 HZ



Performance Characteristics

1st Winding 1st Connection

Design: 32BD1183A

Marks:

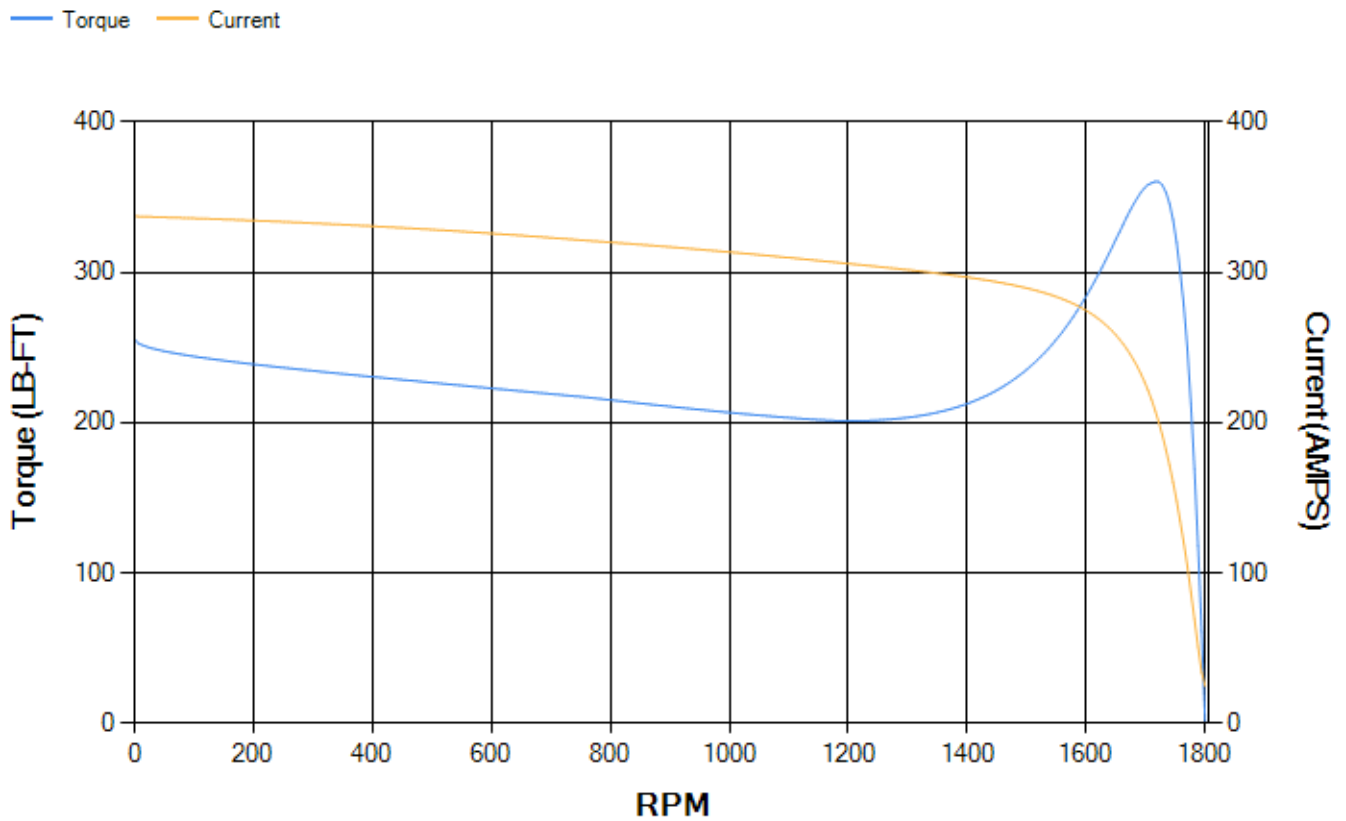
LOAD %	125.0	115.0	100.0	75.0	50.0	25.0	0.0
% EFF	93.77	94.07	94.64	94.79	94.49	91.93	0.00
% PF	83.04	82.57	81.28	76.81	66.71	44.37	3.33
AMPS	75.13	69.29	60.71	48.21	37.12	28.68	24.72

TORQ(FL)#FT	147.64	TORQ(LR)%FL	173.11	TORQ(BD)%FL	243.21
AMPS(LR)	337.38	PF AT START	0.34		

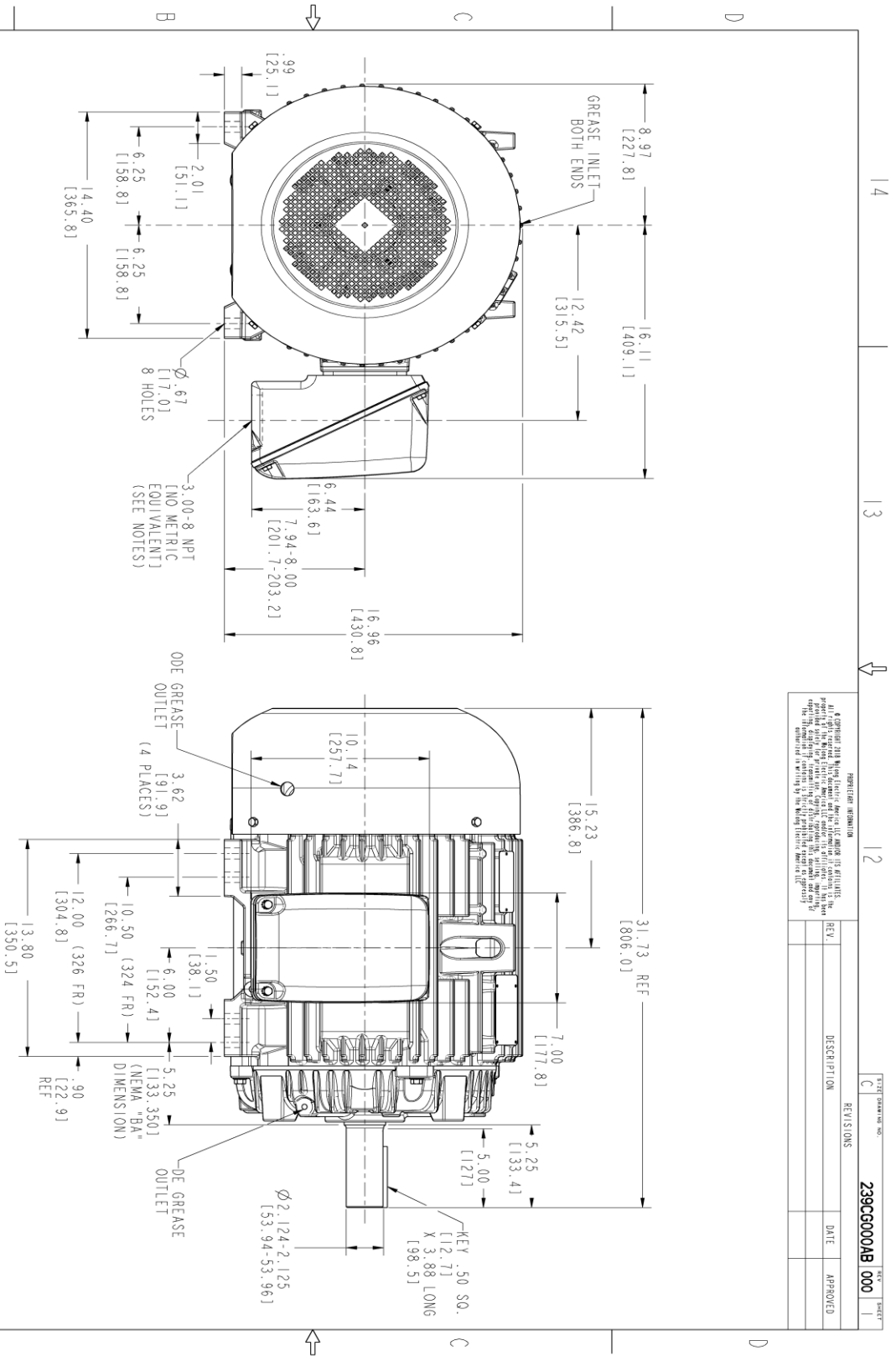
This motor is capable of two cold or one hot start with a maximum connected load inertia of 1058 Lb-Ft Sq (44.54 Kg-meter Sq) at 100% voltage, where the load torque varies with the square of the speed. Acceleration time with maximum inertia and the above load type is 34 seconds. Safe stall time at 100% voltage is 78 seconds cold, 40 seconds hot. Rotor inertia is 8.52 Lb-Ft Sq (0.36 Kg-meter Sq).

Open Circuit A-C:	0.51	Short Circuit D-C:	0.023
Short Circuit A-C:	0.031	X/R Ratio:	8.712
Stator Slots:	48	Rotor Slots:	38

Speed Torque Current Curve (First Connection, First Speed)



Marks:



NOTES :

- CONDUIT BOX MAY BE PLACED WITH THE ENTRANCE DOWN, UP OR ON EITHER SIDE.
- F-1 ASW AS SHOWN.
- ALL DIMENSIONS ARE IN INCHES. BRACKETED DIMENSIONS ARE METRIC (MILLIMETERS).

PROHIBITION INFORMATION

It is prohibited to reproduce, distribute, or disseminate any information contained herein without the prior written consent of GE Industrial Motors. This drawing is the property of GE Industrial Motors and is intended for use only for the specific project and equipment identified herein. It is not to be used for any other purpose without the prior written consent of GE Industrial Motors. The information contained herein is confidential and its disclosure to any third party is strictly prohibited.

REV.	DESCRIPTION	DATE	APPROVED

SHEET DRAWING NO. **239CG000AB 000**



SIGNATURES	DATE
MODEL: UTKASHA 12/02/21	
REV. BY: UTKASHA 12/02/21	
CHECKED: KALIDAS 12/02/21	
DWG. NO: KALIDAS 12/02/21	
W/E:	
QUALITY:	
ISSUED: UTKASHA 12/02/21	
SOL ID MODEL: 239CG000AB	

GE INDUSTRIAL MOTORS
a WOLSKEL company

INDUCTION MOTOR OUTLINE
GP CONSTRUCTION

324/326T TFC, 346 CU IN, C-BOX

239CG000AB

SCALE: 0.250 REF. NO: 239CG000AB

REV. SHEET 1 OF 1

Marks:

Connection Diagram
GEM2034E-FIG9



End shield Assembly		
Part Description	DE Side Part#	ODE Side Part#
End Shield	115E4200AA1	115E4201ZA1
Bearing	235A2609AA01	235A2610AA01
Slinger/Inproseal	149C4399G04	

Fan & Fan Cover Assembly	
Part Description	Part#
Fan	159C6900G04
Fan Cover	128D6854AA1

Conduit & Accessories Box Assembly	
Part Description	Part#
Conduit Box	149C4429AA2

Mechanical Accessories	
Part Description	Part#
Brake	
Tachometer	

