



GE INDUSTRIAL MOTORS
a **WOLONG** company

Product Technical Information

February 17, 2023

Data shown is for the current revision model #. Ensure your nameplate model # matches.

Model Number:	5KS364BAA305
Catalog Number:	M1184
Instruction Manual:	GEI-56128
Connection Diagram:	GEM2034E-FIG3
Outline Drawing:	239CG200AB

Accessory Connection Diagrams

Bearing Thermocouple:	None	Heater:	None
RTD:	None	Thermistor:	None
Thermostat:	None	Winding Thermocouple:	None
Bearing RTD:	None		

Table of Contents

Specification	01
Performance Characteristics	02
Outline Drawing	03
Connection Drawing(s)	04
Spare parts	05

Marks:

MODEL NUMBER:	5KS364BAA305
Outline Drawing:	239CG200AB
Connection Diagram:	GEM2034E-FIG3
Instruction Book:	GEI-56128
Design Code:	36BD3089A
Type:	KS
Frame:	364T
Phases:	3
Poles:	6
Output Power:	40HP 29.6KW
RPM:	1185
Voltage:	230/460
Hertz:	60
Amps - FL:	99.4/49.7
Service Factor:	1.15
Alt Service Factor:	--

Estimated Weight:	980 Lbs
Time Rating:	CONT
Enclosure:	TEFC
Encl Construction:	GP
Ambient Max(°C):	40
Alt Ambient Max(°C):	--
Insulation Class:	F
NEMA Design:	B
Nominal Efficiency:	94.1 %
Guaranteed Efficiency:	--
3/4 Load Efficiency:	--
KVA Code:	G
Max KVAR:	16.4
Power Factor:	80.0
Bearing - DE:	6314ZC3
Bearing - ODE:	6213ZC3

Enclosure is Totally Enclosed Fan-Cooled

Stamped Nameplate Notes:

VT 0-60 HZ NEMA MG1-31



Additional Information:

6P - T EXTN
C/BOX 346 CU IN - 3.00" NPT
F1 MOUNTING
INVERTER DUTY PER NEMA MG1 PART 31
ALTERNATE RATING FOR PWM CONTROL:1.0SF 40C AMBIENT
VAR TORQUE RANGE 0-60 HZ



Performance Characteristics

1st Winding 1st Connection

Design: 36BD3089A

Marks:

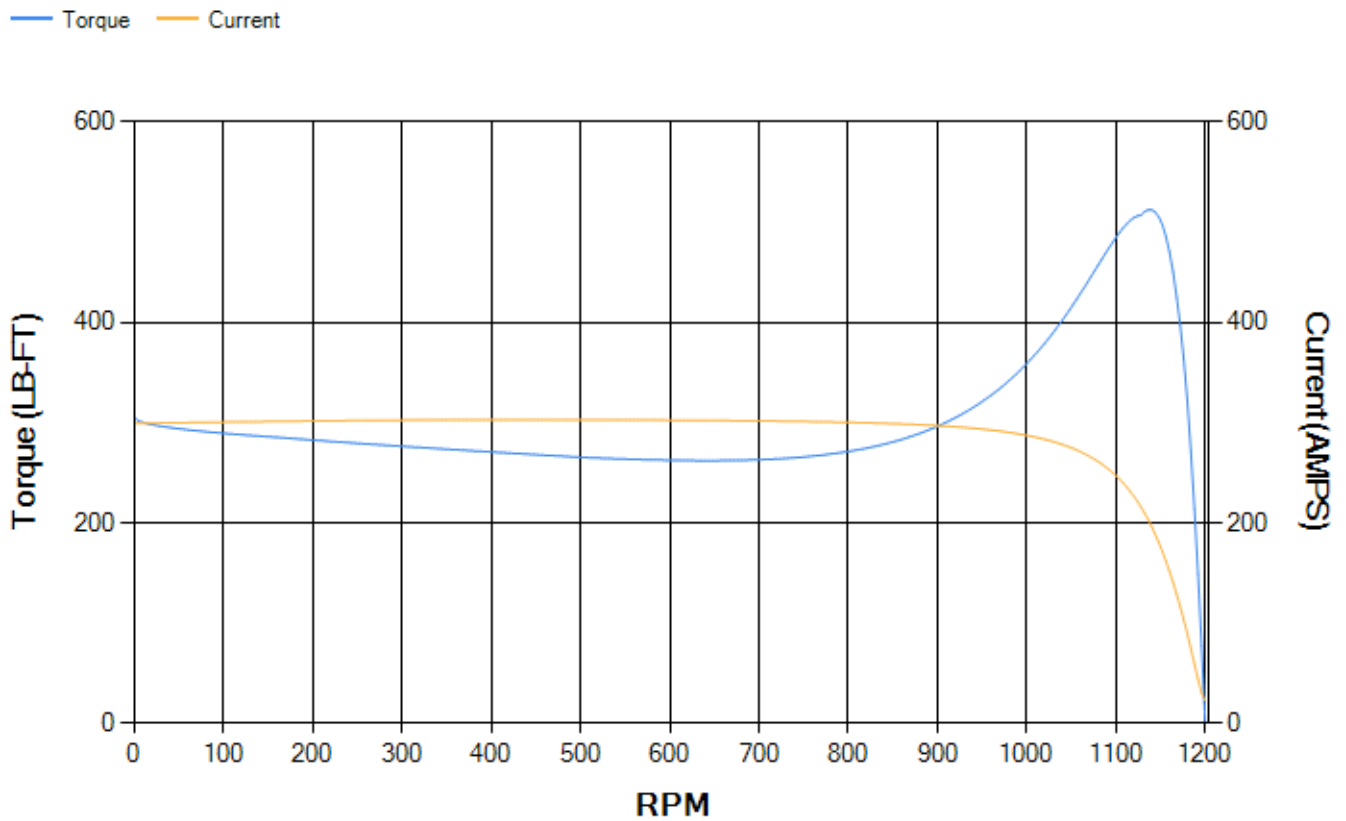
LOAD %	125.0	115.0	100.0	75.0	50.0	25.0	0.0
% EFF	93.47	93.73	94.24	94.26	93.77	90.67	0.00
% PF	83.18	82.22	80.18	74.26	62.59	40.01	3.4
AMPS	60.19	55.86	49.44	40.11	31.89	25.8	22.94

TORQ(FL)#FT	176.88	TORQ(LR)%FL	172.68	TORQ(BD)%FL	286.19
AMPS(LR)	299.19	PF AT START	0.38		

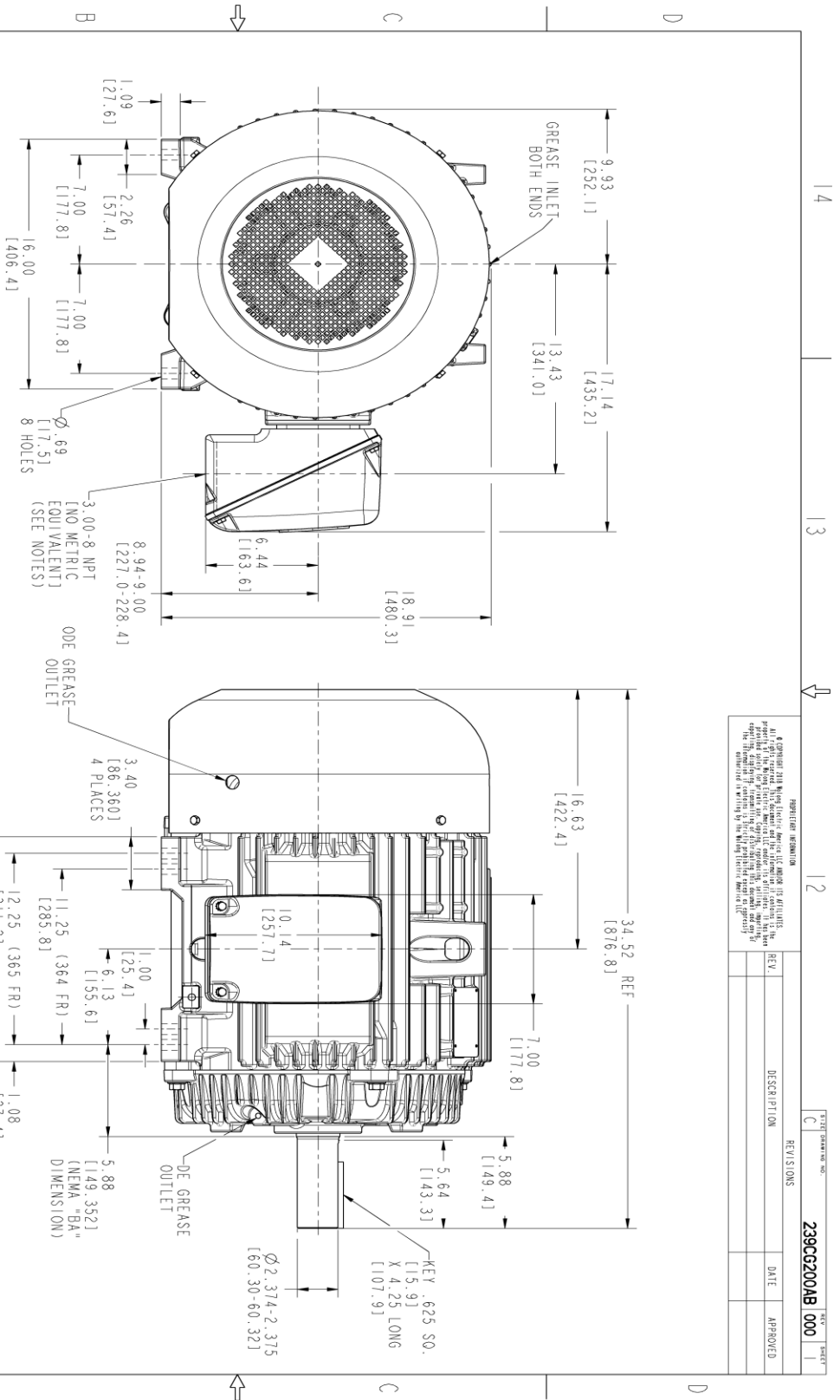
This motor is capable of two cold or one hot start with a maximum connected load inertia of 3453 Lb-Ft Sq (145.37 Kg-meter Sq)at 100% voltage, where the load torque varies with the square of the speed. Acceleration time with maximum inertia and the above load type is 55 seconds. Safe stall time at 100% voltage is 108 seconds cold, 67 seconds hot. Rotor inertia is 18.57 Lb-Ft Sq (0.78 Kg-meter Sq).

Open Circuit A-C:	0.497	Short Circuit D-C:	0.016
Short Circuit A-C:	0.029	X/R Ratio:	5.934
Stator Slots:	72	Rotor Slots:	58

Speed Torque Current Curve (First Connection, First Speed)



Marks:



REVISION INFORMATION

REV.	DESCRIPTION	DATE	APPROVED

399CG200AB 000

NOTES :

- CONDUIT BOX MAY BE PLACED WITH THE ENTRANCE DOWN, UP OR ON EITHER SIDE.
- F-1 ASM AS SHOWN.
- ALL DIMENSIONS ARE IN INCHES & BRACKETED DIMENSIONS ARE METRIC (MILLIMETERS).



MODEL	UTRASHA	DATE	12/09/21
REV	UTRASHA	TITLE	GE INDUSTRIAL MOTORS a WOLONG company
CHECKED	UTRASHA	DATE	12/09/21
DESIGNED	UTRASHA	DATE	12/09/21
QUALITY	UTRASHA	DATE	12/09/21
SCALE	1:1	REV	
364/365T TERC. 346 CUM. C-BOX		239CG200AB	
SHEET 1 OF 1			

Marks:

Connection Diagram
GEM2034E-FIG3



End shield Assembly		
Part Description	DE Side Part#	ODE Side Part#
End Shield	115E4250AA1	115E4251ZA1
Bearing	235A2616AA01	235A2617AA01
Slinger/Inproseal	149C4399G05	

Fan & Fan Cover Assembly	
Part Description	Part#
Fan	159C7100G01
Fan Cover	128D6853AA1

Conduit & Accessories Box Assembly	
Part Description	Part#
Conduit Box	149C4429AA2

Mechanical Accessories	
Part Description	Part#
Brake	
Tachometer	

