



GE INDUSTRIAL MOTORS
a **WOLONG** company

Product Technical Information

February 17, 2023

Data shown is for the current revision model #. Ensure your nameplate model # matches.

Model Number:	5KS365BAA305
Catalog Number:	M1188
Instruction Manual:	GEI-56128
Connection Diagram:	GEM2034E-FIG3
Outline Drawing:	239CG200AB

Accessory Connection Diagrams

Bearing Thermocouple:	None	Heater:	None
RTD:	None	Thermistor:	None
Thermostat:	None	Winding Thermocouple:	None
Bearing RTD:	None		

Table of Contents

Specification	01
Performance Characteristics	02
Outline Drawing	03
Connection Drawing(s)	04
Spare parts	05

Marks:

MODEL NUMBER:	5KS365BAA305
Outline Drawing:	239CG200AB
Connection Diagram:	GEM2034E-FIG3
Instruction Book:	GEI-56128
Design Code:	36BD3090A
Type:	KS
Frame:	365T
Phases:	3
Poles:	6
Output Power:	50HP 37KW
RPM:	1185
Voltage:	230/460
Hertz:	60
Amps - FL:	123.6/61.8
Service Factor:	1.15
Alt Service Factor:	--

Estimated Weight:	1000 Lbs
Time Rating:	CONT
Enclosure:	TEFC
Encl Construction:	GP
Ambient Max(°C):	40
Alt Ambient Max(°C):	--
Insulation Class:	F
NEMA Design:	B
Nominal Efficiency:	94.1 %
Guaranteed Efficiency:	--
3/4 Load Efficiency:	--
KVA Code:	G
Max KVAR:	20.4
Power Factor:	80.5
Bearing - DE:	6314ZC3
Bearing - ODE:	6213ZC3

Enclosure is Totally Enclosed Fan-Cooled

Stamped Nameplate Notes:

VT 0-60 HZ NEMA MG1-31



Additional Information:

6P - T EXTN
C/BOX 346 CU IN - 3.00" NPT
F1 MOUNTING
INVERTER DUTY PER NEMA MG1 PART 31
ALTERNATE RATING FOR PWM CONTROL:1.0SF 40C AMBIENT
VAR TORQUE RANGE 0-60 HZ



Performance Characteristics

1st Winding 1st Connection

Design: 36BD3090A

Marks:

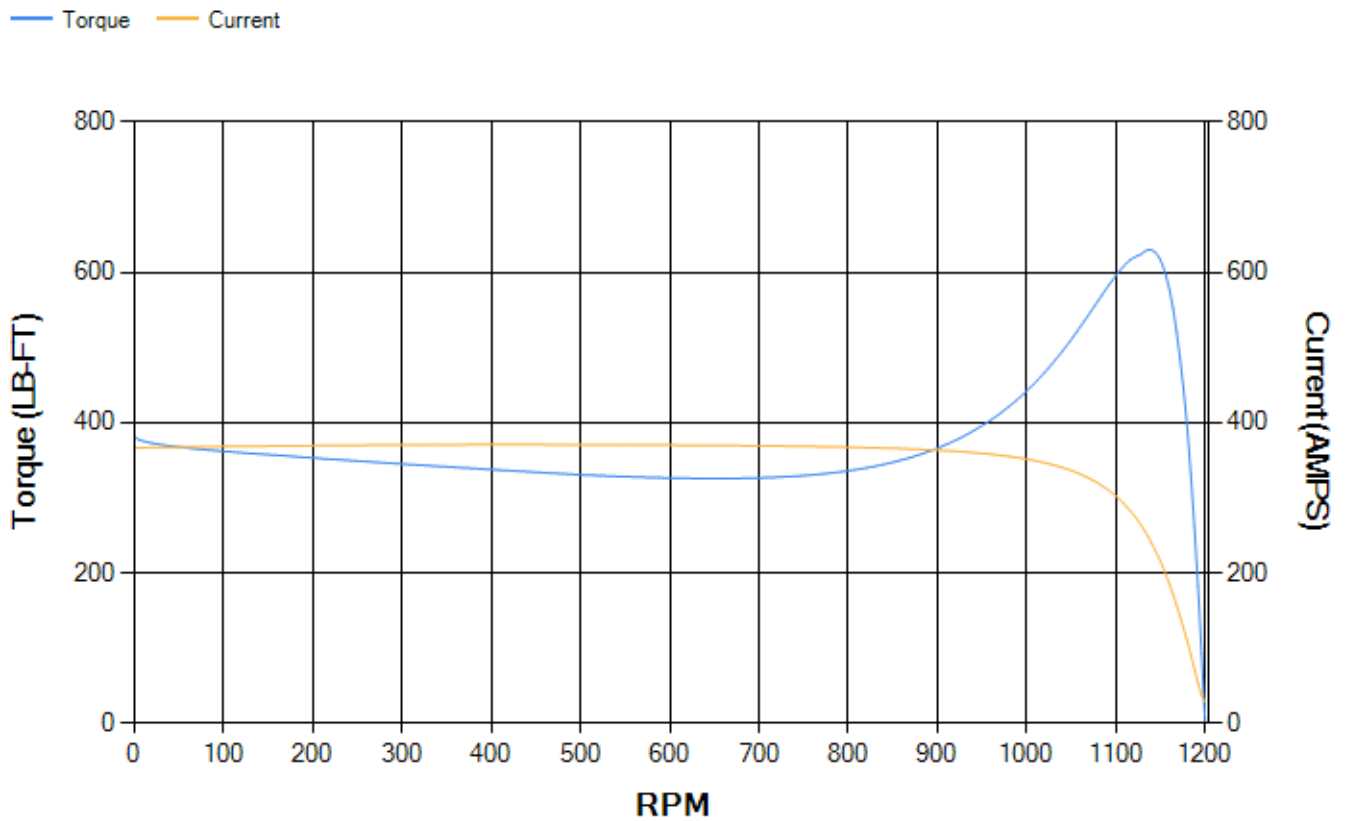
LOAD %	125.0	115.0	100.0	75.0	50.0	25.0	0.0
% EFF	93.25	93.55	94.12	94.25	93.89	91.04	0.00
% PF	83.21	82.29	80.3	74.48	62.86	40.18	3.2
AMPS	75.39	69.91	61.78	50	39.65	31.98	28.44

TORQ(FL)#FT	221.34	TORQ(LR)%FL	172.58	TORQ(BD)%FL	280.74
AMPS(LR)	366.57	PF AT START	0.38		

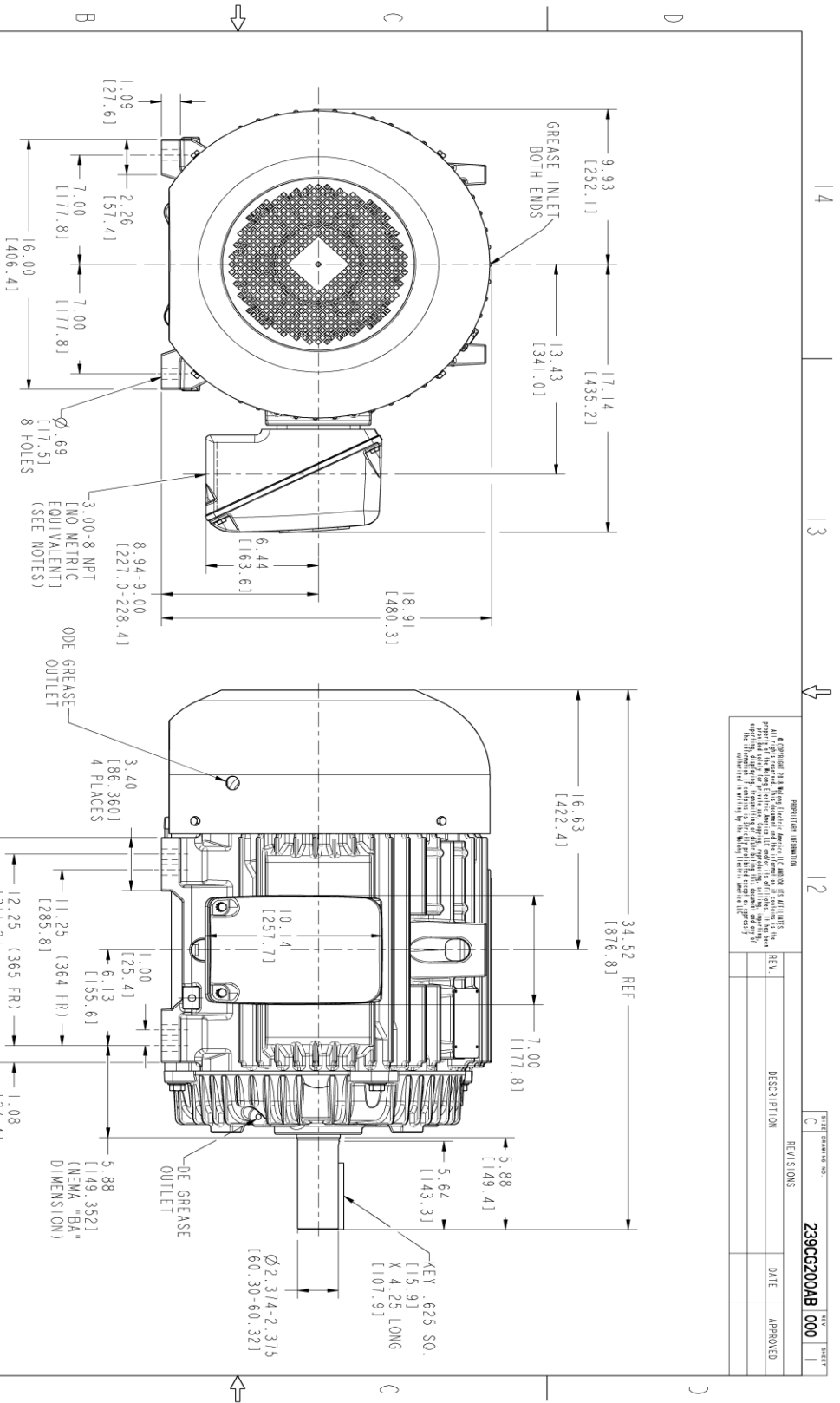
This motor is capable of two cold or one hot start with a maximum connected load inertia of 3011 Lb-Ft Sq (126.76 Kg-meter Sq)at 100% voltage, where the load torque varies with the square of the speed. Acceleration time with maximum inertia and the above load type is 39 seconds. Safe stall time at 100% voltage is 92 seconds cold, 49 seconds hot. Rotor inertia is 20.06 Lb-Ft Sq (0.84 Kg-meter Sq).

Open Circuit A-C:	0.457	Short Circuit D-C:	0.015
Short Circuit A-C:	0.027	X/R Ratio:	5.743
Stator Slots:	72	Rotor Slots:	58

Speed Torque Current Curve (First Connection, First Speed)



Marks:



NOTES :

1. CONDUIT BOX MAY BE PLACED WITH THE ENTRANCE DOWN, UP OR ON EITHER SIDE.
2. F-1 ASM AS SHOWN.
3. ALL DIMENSIONS ARE IN INCHES & BRACKETED DIMENSIONS ARE METRIC (MILLIMETERS).

REVISION INFORMATION

REV.	DESCRIPTION	DATE	APPROVED

SIGNATURES		DATE	
MODEL	UTRASHA	12/09/21	
REV. 1	UTRASHA	12/09/21	
CHECKED	AKLINDS	12/09/21	
DWG. NO.	AKLINDS	12/09/21	
QUALITY			
ISSUED	UTRASHA	12/09/21	
SIZE	C		
DRAWING		SCALE: 0.240	
GE INDUSTRIAL MOTORS a WOLONG company		REF. No: 239CG200AB	
OUTLINE GP CONSTRUCTION		REV	
364/365T TERC. 346 CUM. C-BOX		239CG200AB	
SOL. ID MODEL: 239CG200AB		SHEET 1 OF 1	

Marks:

Connection Diagram
GEM2034E-FIG3



End shield Assembly		
Part Description	DE Side Part#	ODE Side Part#
End Shield	115E4250AA1	115E4251ZA1
Bearing	235A2616AA01	235A2617AA01
Slinger/Inproseal	149C4399G05	

Fan & Fan Cover Assembly	
Part Description	Part#
Fan	159C7100G01
Fan Cover	128D6853AA1

Conduit & Accessories Box Assembly	
Part Description	Part#
Conduit Box	149C4429AA2

Mechanical Accessories	
Part Description	Part#
Brake	
Tachometer	

