



GE INDUSTRIAL MOTORS
a **WOLONG** company

Product Technical Information

February 17, 2023

Data shown is for the current revision model #. Ensure your nameplate model # matches.

Model Number:	5KS364BAA115
Catalog Number:	M1190
Instruction Manual:	GEI-56128
Connection Diagram:	GEM2034E-FIG9
Outline Drawing:	239CG200AA

Accessory Connection Diagrams

Bearing Thermocouple:	None	Heater:	None
RTD:	None	Thermistor:	None
Thermostat:	None	Winding Thermocouple:	None
Bearing RTD:	None		

Table of Contents

Specification	01
Performance Characteristics	02
Outline Drawing	03
Connection Drawing(s)	04
Spare parts	05

Marks:

MODEL NUMBER:	5KS364BAA115
Outline Drawing:	239CG200AA
Connection Diagram:	GEM2034E-FIG9
Instruction Book:	GEI-56128
Design Code:	36BD0117A
Type:	KS
Frame:	364TS
Phases:	3
Poles:	2
Output Power:	60HP 44.4KW
RPM:	3575
Voltage:	230/460
Hertz:	60
Amps - FL:	140.6/70.3
Service Factor:	1.15
Alt Service Factor:	--

Estimated Weight:	970 Lbs
Time Rating:	CONT
Enclosure:	TEFC
Encl Construction:	GP
Ambient Max(°C):	40
Alt Ambient Max(°C):	--
Insulation Class:	F
NEMA Design:	B
Nominal Efficiency:	94.5 %
Guaranteed Efficiency:	--
3/4 Load Efficiency:	--
KVA Code:	G
Max KVAR:	19.4
Power Factor:	84.5
Bearing - DE:	6213ZC3
Bearing - ODE:	6213ZC3

Enclosure is Totally Enclosed Fan-Cooled

Stamped Nameplate Notes:

VT 0-60 HZ NEMA MG1-31



Additional Information:

2P - TS EXTN
C/BOX 346 CU IN - 3.00" NPT
F1 MOUNTING
INVERTER DUTY PER NEMA MG1 PART 31
ALTERNATE RATING FOR PWM CONTROL:1.0SF 40C AMBIENT
VAR TORQUE RANGE 0-60 HZ



Performance Characteristics

1st Winding 1st Connection

Design: 36BD0117A

Marks:

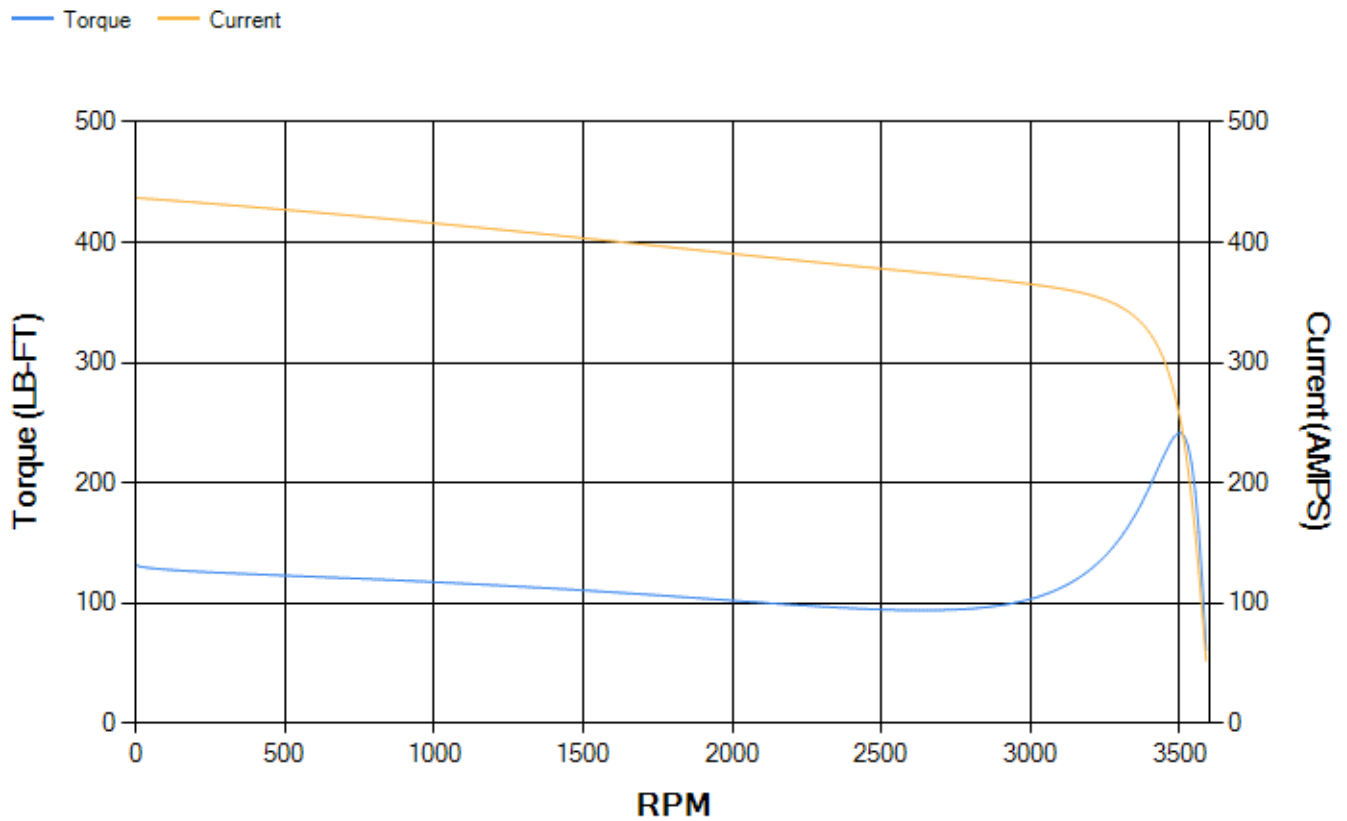
LOAD %	125.0	115.0	100.0	75.0	50.0	25.0	0.0
% EFF	94.24	94.41	94.79	94.59	93.84	90.34	0.00
% PF	86.22	85.73	84.5	80.34	70.83	48.62	4.71
AMPS	86.39	79.79	69.97	55.42	42.24	31.96	27.02

TORQ(FL)#FT	88.11	TORQ(LR)%FL	149.66	TORQ(BD)%FL	273.86
AMPS(LR)	437.11	PF AT START	0.3		

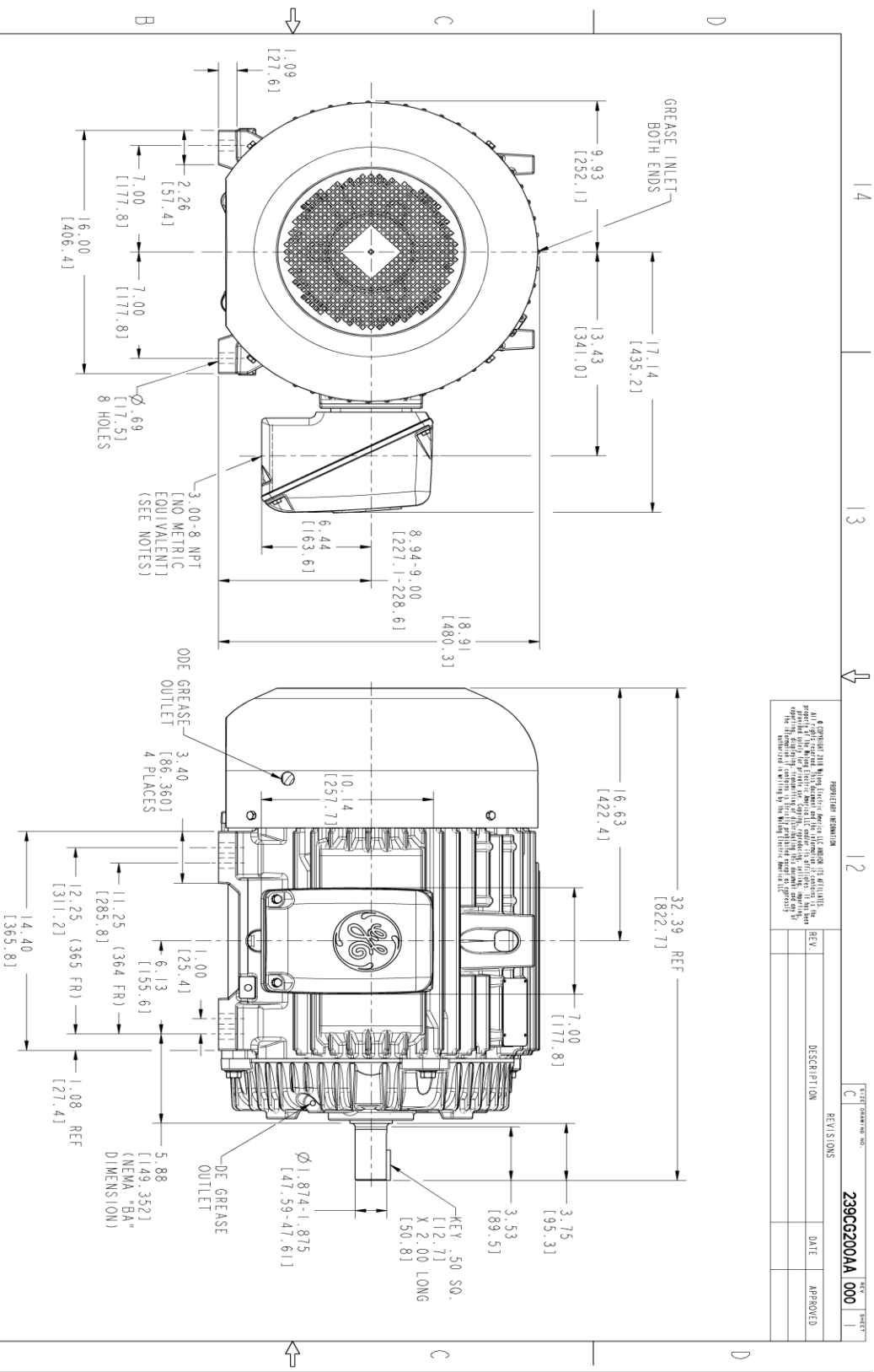
This motor is capable of two cold or one hot start with a maximum connected load inertia of 159 Lb-Ft Sq (6.69 Kg-meter Sq)at 100% voltage, where the load torque varies with the square of the speed. Acceleration time with maximum inertia and the above load type is 22 seconds. Safe stall time at 100% voltage is 46 seconds cold, 26 seconds hot. Rotor inertia is 6.96 Lb-Ft Sq (0.29 Kg-meter Sq).

Open Circuit A-C:	0.95	Short Circuit D-C:	0.023
Short Circuit A-C:	0.055	X/R Ratio:	8.805
Stator Slots:	48	Rotor Slots:	38

Speed Torque Current Curve (First Connection, First Speed)



Marks:



- NOTES:
1. CONDUIT BOX MAY BE PLACED WITH THE ENTRANCE DOWN, UP OR ON EITHER SIDE.
 2. F-I ASM AS SHOWN.
 3. ALL DIMENSION ARE IN INCHES. BRACKETED DIMENSIONS ARE METRIC (MILLIMETERS).

REGISTRATION INFORMATION

© Copyright 2018 GE Industrial Motors. All rights reserved. This drawing is the property of GE Industrial Motors. It is to be used for the design and construction of the motor only. It is not to be used for any other purpose without the written consent of GE Industrial Motors. The information contained herein is confidential and proprietary to GE Industrial Motors.

REV.	DESCRIPTION	DATE	APPROVED

SIGNATURES	DATE
DESIGNER: UTKARSHA	12/02/21
CHECKED: UTKARSHA	12/02/21
DATE: UTKARSHA	12/02/21
SCALE: 0.240	

GE INDUSTRIAL MOTORS
a WOLONG company

INDUCTION MOTOR OUTLINE
GP CONSTRUCTION
364/365TS TFC. 346 CU IN. C90X

239CG200AA 000

SIZE: DRAWING: C
SHEET 1 OF 1

Marks:

Connection Diagram
GEM2034E-FIG9



End shield Assembly		
Part Description	DE Side Part#	ODE Side Part#
End Shield	115E4251AA1	115E4251ZA1
Bearing	235A2617AA01	235A2617AA01
Slinger/Inproseal	149C4399G05	

Fan & Fan Cover Assembly	
Part Description	Part#
Fan	159C6700G02
Fan Cover	128D6853AA1

Conduit & Accessories Box Assembly	
Part Description	Part#
Conduit Box	149C4429AA2

Mechanical Accessories	
Part Description	Part#
Brake	
Tachometer	

