



GE INDUSTRIAL MOTORS
a **WOLONG** company

Product Technical Information

February 17, 2023

Data shown is for the current revision model #. Ensure your nameplate model # matches.

Model Number:	5KS404BAA305
Catalog Number:	M1192
Instruction Manual:	GEI-56128
Connection Diagram:	GEM2034E-FIG9
Outline Drawing:	239CG400AA

Accessory Connection Diagrams

Bearing Thermocouple:	None	Heater:	None
RTD:	None	Thermistor:	None
Thermostat:	None	Winding Thermocouple:	None
Bearing RTD:	None		

Table of Contents

Specification	01
Performance Characteristics	02
Outline Drawing	03
Connection Drawing(s)	04
Spare parts	05

Marks:

MODEL NUMBER:	5KS404BAA305	Estimated Weight:	1410 Lbs
Outline Drawing:	239CG400AA	Time Rating:	CONT
Connection Diagram:	GEM2034E-FIG9	Enclosure:	TEFC
Instruction Book:	GEI-56128	Encl Construction:	GP
Design Code:	40BD3068A	Ambient Max(°C):	40
Type:	KS	Alt Ambient Max(°C):	--
Frame:	404T	Insulation Class:	F
Phases:	3	NEMA Design:	B
Poles:	6	Nominal Efficiency:	94.5 %
Output Power:	60HP 44.4KW	Guaranteed Efficiency:	--
RPM:	1190	3/4 Load Efficiency:	--
Voltage:	230/460	KVA Code:	G
Hertz:	60	Max KVAR:	22.9
Amps - FL:	147.6/73.8	Power Factor:	80.5
Service Factor:	1.15	Bearing - DE:	6316ZC3S0
Alt Service Factor:	--	Bearing - ODE:	6213ZC3

Enclosure is Totally Enclosed Fan-Cooled

Stamped Nameplate Notes:

VT 0-60 HZ NEMA MG1-31



Additional Information:

6P - T EXTN
C/BOX 700 CU IN - 3.00" NPT
F1 MOUNTING
INVERTER DUTY PER NEMA MG1 PART 31
ALTERNATE RATING FOR PWM CONTROL:1.0SF 40C AMBIENT
VAR TORQUE RANGE 0-60 HZ



Performance Characteristics

1st Winding 1st Connection

Design: 40BD3068A

Marks:

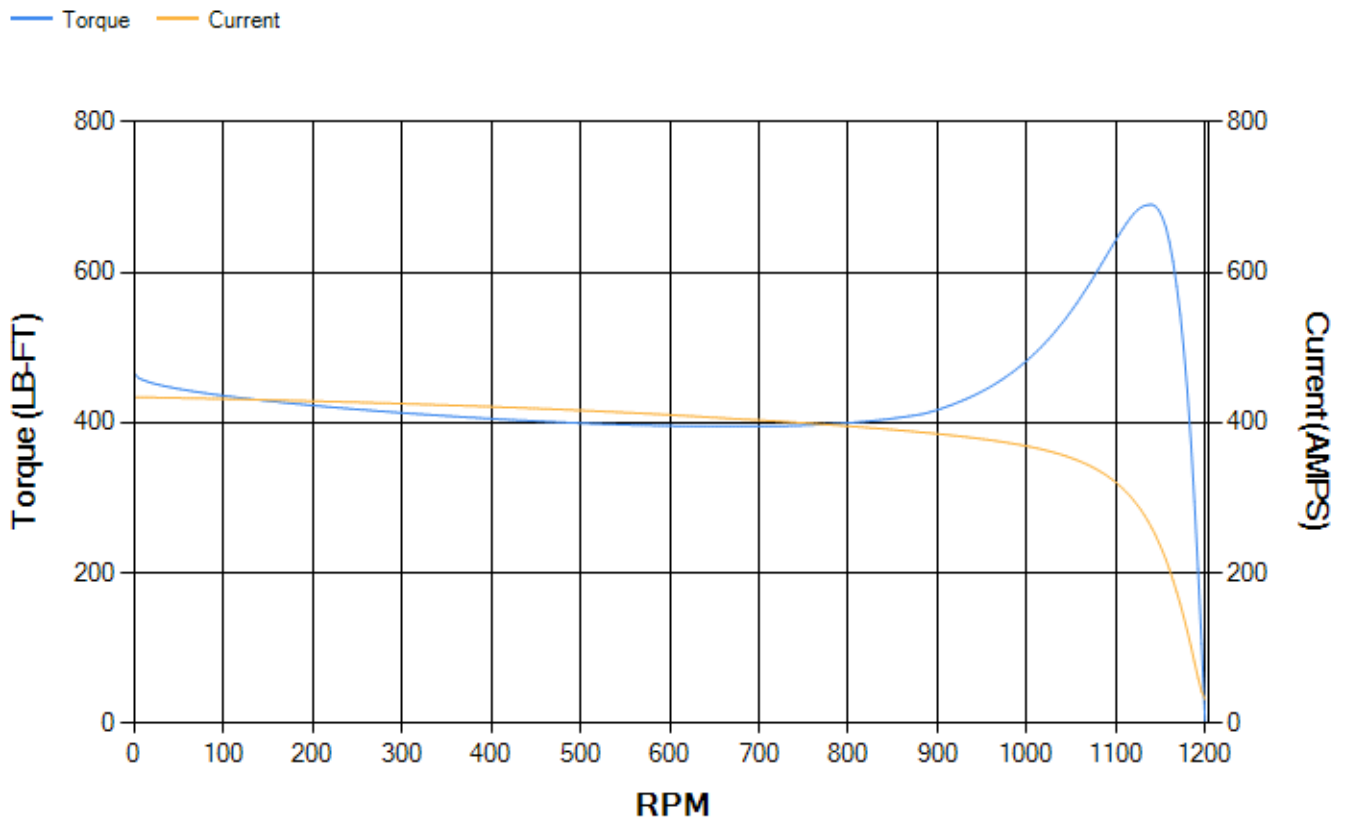
LOAD %	125.0	115.0	100.0	75.0	50.0	25.0	0.0
% EFF	93.83	94.07	94.56	94.54	94.02	90.94	0.00
% PF	82.95	82.27	80.66	75.56	64.76	42.35	3.6
AMPS	90.19	83.45	73.48	58.96	46.12	36.45	31.91

TORQ(FL)#FT 264.9 **TORQ(LR)%FL** 175.68 **TORQ(BD)%FL** 259.76
AMPS(LR) 434 **PF AT START** 0.35

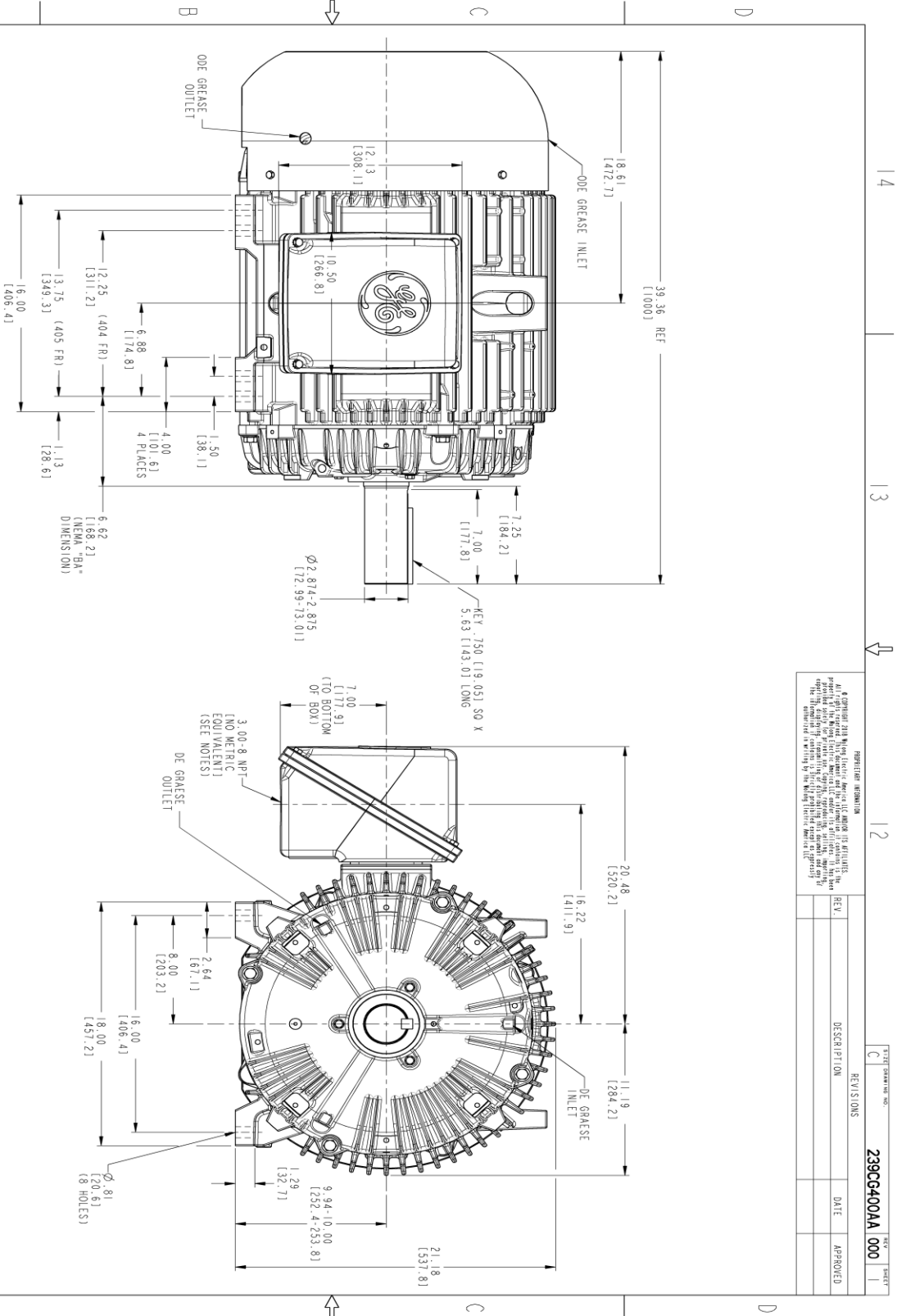
This motor is capable of two cold or one hot start with a maximum connected load inertia of 5291 Lb-Ft Sq (222.75 Kg-meter Sq)at 100% voltage, where the load torque varies with the square of the speed. Acceleration time with maximum inertia and the above load type is 59 seconds. Safe stall time at 100% voltage is 122 seconds cold, 76 seconds hot. Rotor inertia is 28.28 Lb-Ft Sq (1.19 Kg-meter Sq).

Open Circuit A-C: 0.634 **Short Circuit D-C:** 0.021
Short Circuit A-C: 0.04 **X/R Ratio:** 7.881
Stator Slots: 72 **Rotor Slots:** 58

Speed Torque Current Curve (First Connection, First Speed)



Marks:



- NOTES:
1. CONDUIT BOX MAY BE PLACED WITH THE ENTRANCE DOWN, UP OR ON EITHER SIDE.
 2. F-1 ASSEMBLY AS SHOWN.
 3. ALL DIMENSIONS ARE IN INCHES, BRACKETED DIMENSIONS ARE METRIC (MILLIMETERS).

REVISION INFORMATION

REV.	DESCRIPTION	DATE	APPROVED

SIGNATURES	DATE	TITLE
MODEL: UTKASHA	07/10/22	<p>GE INDUSTRIAL MOTORS a WOLONG company</p> <p>OUTLINE 404/405 T GP CONSTRUCTION TEFC GP, 700 CU. IN. C-BOX 239CG400AA</p>
REV. BY: UTKASHA	07/10/22	
CHECKED: MALINDAS	07/10/22	
DRAWN: SACHIN	07/10/22	
DATE: 07/10/22	DATE: 07/10/22	SCALE: 0.250
SIZE: C	REF. NO.: 239CG400AA	SHEET 1 OF 1

Marks:

Connection Diagram
GEM2034E-FIG9



End shield Assembly		
Part Description	DE Side Part#	ODE Side Part#
End Shield	115E4304AA1	115E4305ZA1
Bearing	235A2618AA04	235A2617AA01
Slinger/Inproseal	149C4399G06	

Fan & Fan Cover Assembly	
Part Description	Part#
Fan	159C7100G02
Fan Cover	128D6852AA1

Conduit & Accessories Box Assembly	
Part Description	Part#
Conduit Box	118D4408AD2

Mechanical Accessories	
Part Description	Part#
Brake	
Tachometer	

