



GE INDUSTRIAL MOTORS
a **WOLONG** company

Product Technical Information

February 17, 2023

Data shown is for the current revision model #. Ensure your nameplate model # matches.

Model Number:	5KS365BAA115
Catalog Number:	M1194
Instruction Manual:	GEI-56128
Connection Diagram:	GEM2034E-FIG9
Outline Drawing:	239CG200AC

Accessory Connection Diagrams

Bearing Thermocouple:	None	Heater:	None
RTD:	None	Thermistor:	None
Thermostat:	None	Winding Thermocouple:	None
Bearing RTD:	None		

Table of Contents

Specification	01
Performance Characteristics	02
Outline Drawing	03
Connection Drawing(s)	04
Spare parts	05

Marks:

MODEL NUMBER:	5KS365BAA115
Outline Drawing:	239CG200AC
Connection Diagram:	GEM2034E-FIG9
Instruction Book:	GEI-56128
Design Code:	36BD0118A
Type:	KS
Frame:	365TS
Phases:	3
Poles:	2
Output Power:	75HP 55.5KW
RPM:	3575
Voltage:	230/460
Hertz:	60
Amps - FL:	171.8/85.9
Service Factor:	1.15
Alt Service Factor:	--

Estimated Weight:	1030 Lbs
Time Rating:	CONT
Enclosure:	TEFC
Encl Construction:	GP
Ambient Max(°C):	40
Alt Ambient Max(°C):	--
Insulation Class:	F
NEMA Design:	B
Nominal Efficiency:	94.5 %
Guaranteed Efficiency:	--
3/4 Load Efficiency:	--
KVA Code:	G
Max KVAR:	20.9
Power Factor:	86.5
Bearing - DE:	6213ZC3
Bearing - ODE:	6213ZC3

Enclosure is Totally Enclosed Fan-Cooled

Stamped Nameplate Notes:

VT 0-60 HZ NEMA MG1-31



Additional Information:

2P - TS EXTN
C/BOX 700 CU IN - 3.00" NPT
F1 MOUNTING
INVERTER DUTY PER NEMA MG1 PART 31
ALTERNATE RATING FOR PWM CONTROL:1.0SF 40C AMBIENT
VAR TORQUE RANGE 0-60 HZ



Performance Characteristics

1st Winding 1st Connection

Design: 36BD0118A

Marks:

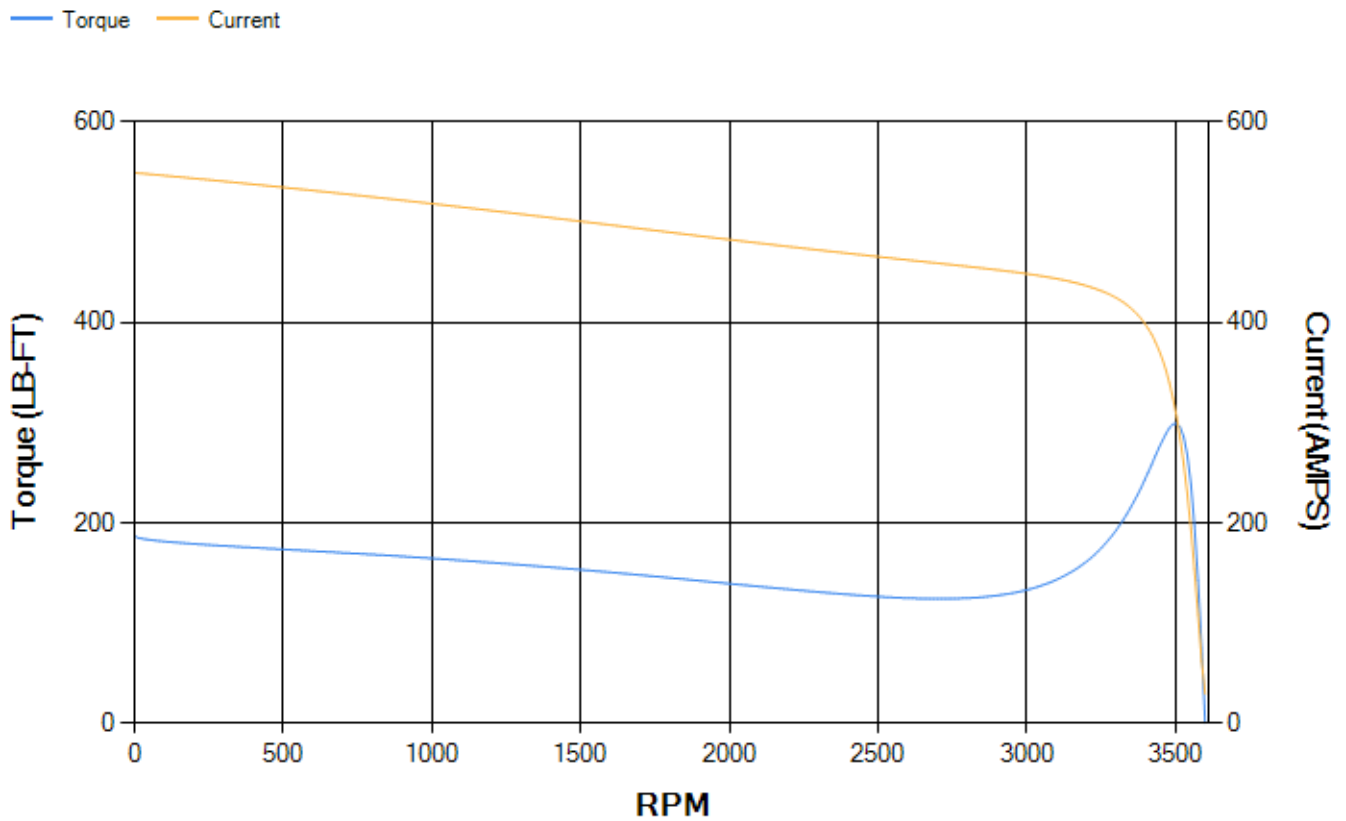
LOAD %	125.0	115.0	100.0	75.0	50.0	25.0	0.0
% EFF	94.47	94.68	95.12	95.06	94.56	91.72	0.00
% PF	87.86	87.55	86.65	83.31	75.02	53.41	4.51
AMPS	105.71	97.39	85.02	66.47	49.48	35.82	29.15

TORQ(FL)#FT	110.18	TORQ(LR)%FL	169.64	TORQ(BD)%FL	271.45
AMPS(LR)	549.53	PF AT START	0.33		

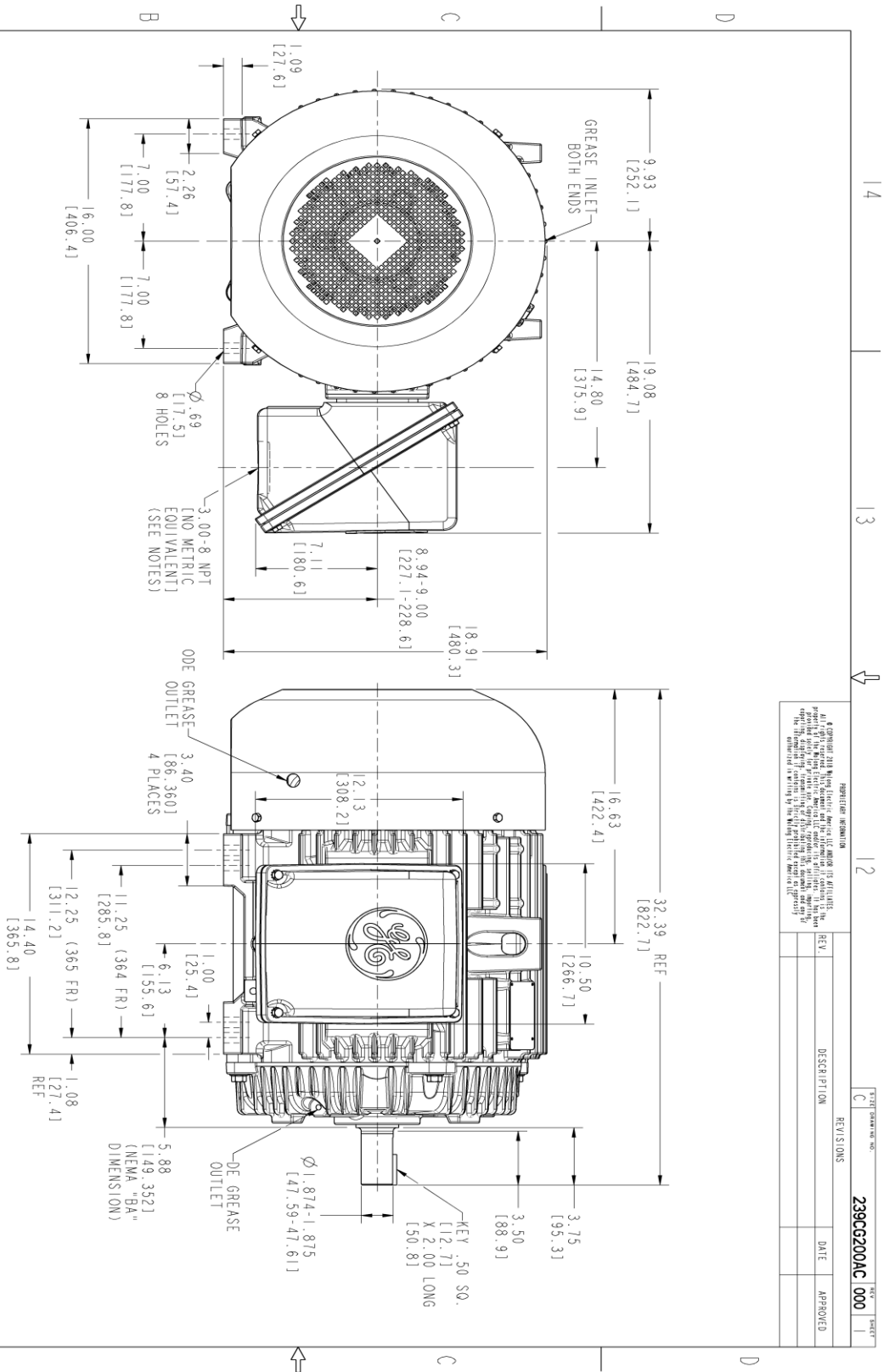
This motor is capable of two cold or one hot start with a maximum connected load inertia of 168 Lb-Ft Sq (7.07 Kg-meter Sq)at 100% voltage, where the load torque varies with the square of the speed. Acceleration time with maximum inertia and the above load type is 17 seconds. Safe stall time at 100% voltage is 40 seconds cold, 20 seconds hot. Rotor inertia is 8.98 Lb-Ft Sq (0.38 Kg-meter Sq).

Open Circuit A-C:	1.034	Short Circuit D-C:	0.022
Short Circuit A-C:	0.05	X/R Ratio:	8.401
Stator Slots:	48	Rotor Slots:	38

Speed Torque Current Curve (First Connection, First Speed)



Marks:



- NOTES:
- CONDUIT BOX MAY BE PLACED WITH THE ENTRANCE DOWN, UP OR ON EITHER SIDE.
 - F-I ASM AS SHOWN.
 - ALL DIMENSION ARE IN INCHES. BRACKETED DIMENSIONS ARE METRIC (MILLIMETERS).

PROHIBITION INFORMATION

It is prohibited to reproduce, distribute, or disseminate any information contained herein without the prior written permission of GE. This document is the property of GE and is intended for use only by the individual or organization to whom it is issued. It is not to be used for any other purpose without the prior written permission of GE. The information contained herein is the property of GE and is confidential and proprietary.

REV.	DESCRIPTION	DATE	APPROVED

SIGNATURES		DATE	
MODEL	UTIKASHA	12/02/21	
REV. 1	UTIKASHA	12/02/21	
CHECKED	AKL/DAS	12/02/21	
DRAWN	AKL/DAS	12/02/21	
DATE			
QUALITY			
ISSUED	UTIKASHA	12/02/21	
SCALE: 0.240	REF. No: 239CG200AC		

GE INDUSTRIAL MOTORS
a WOLONG company

INDUCTION MOTOR OUTLINE
GP CONSTRUCTION
364/365TS TFC. 700 CU. IN. C-BOX

239CG200AC

SHEET 1 OF 1

Marks:

Connection Diagram
GEM2034E-FIG9



End shield Assembly		
Part Description	DE Side Part#	ODE Side Part#
End Shield	115E4251AA1	115E4251ZA1
Bearing	235A2617AA01	235A2617AA01
Slinger/Inproseal	149C4399G05	

Fan & Fan Cover Assembly	
Part Description	Part#
Fan	159C6700G02
Fan Cover	128D6853AA1

Conduit & Accessories Box Assembly	
Part Description	Part#
Conduit Box	118D4408AD2

Mechanical Accessories	
Part Description	Part#
Brake	
Tachometer	

