



GE INDUSTRIAL MOTORS
a **WOLONG** company

Product Technical Information

February 17, 2023

Data shown is for the current revision model #. Ensure your nameplate model # matches.

Model Number:	5KS405BAA305
Catalog Number:	M1196
Instruction Manual:	GEI-56128
Connection Diagram:	GEM2034E-FIG3
Outline Drawing:	239CG400AA

Accessory Connection Diagrams

Bearing Thermocouple:	None	Heater:	None
RTD:	None	Thermistor:	None
Thermostat:	None	Winding Thermocouple:	None
Bearing RTD:	None		

Table of Contents

Specification	01
Performance Characteristics	02
Outline Drawing	03
Connection Drawing(s)	04
Spare parts	05

Marks:

MODEL NUMBER:	5KS405BAA305	Estimated Weight:	1430 Lbs
Outline Drawing:	239CG400AA	Time Rating:	CONT
Connection Diagram:	GEM2034E-FIG3	Enclosure:	TEFC
Instruction Book:	GEI-56128	Encl Construction:	GP
Design Code:	40BD3069A	Ambient Max(°C):	40
Type:	KS	Alt Ambient Max(°C):	--
Frame:	405T	Insulation Class:	F
Phases:	3	NEMA Design:	B
Poles:	6	Nominal Efficiency:	94.5 %
Output Power:	75HP 55.5KW	Guaranteed Efficiency:	--
RPM:	1190	3/4 Load Efficiency:	--
Voltage:	230/460	KVA Code:	G
Hertz:	60	Max KVAR:	29.6
Amps - FL:	185.8/92.9	Power Factor:	80.0
Service Factor:	1.15	Bearing - DE:	6316ZC3S0
Alt Service Factor:	--	Bearing - ODE:	6213ZC3

Enclosure is Totally Enclosed Fan-Cooled

Stamped Nameplate Notes:

VT 0-60 HZ NEMA MG1-31



Additional Information:

6P - T EXTN
C/BOX 700 CU IN - 3.00" NPT
F1 MOUNTING
INVERTER DUTY PER NEMA MG1 PART 31
ALTERNATE RATING FOR PWM CONTROL:1.0SF 40C AMBIENT
VAR TORQUE RANGE 0-60 HZ



Performance Characteristics

1st Winding 1st Connection

Design: 40BD3069A

Marks:

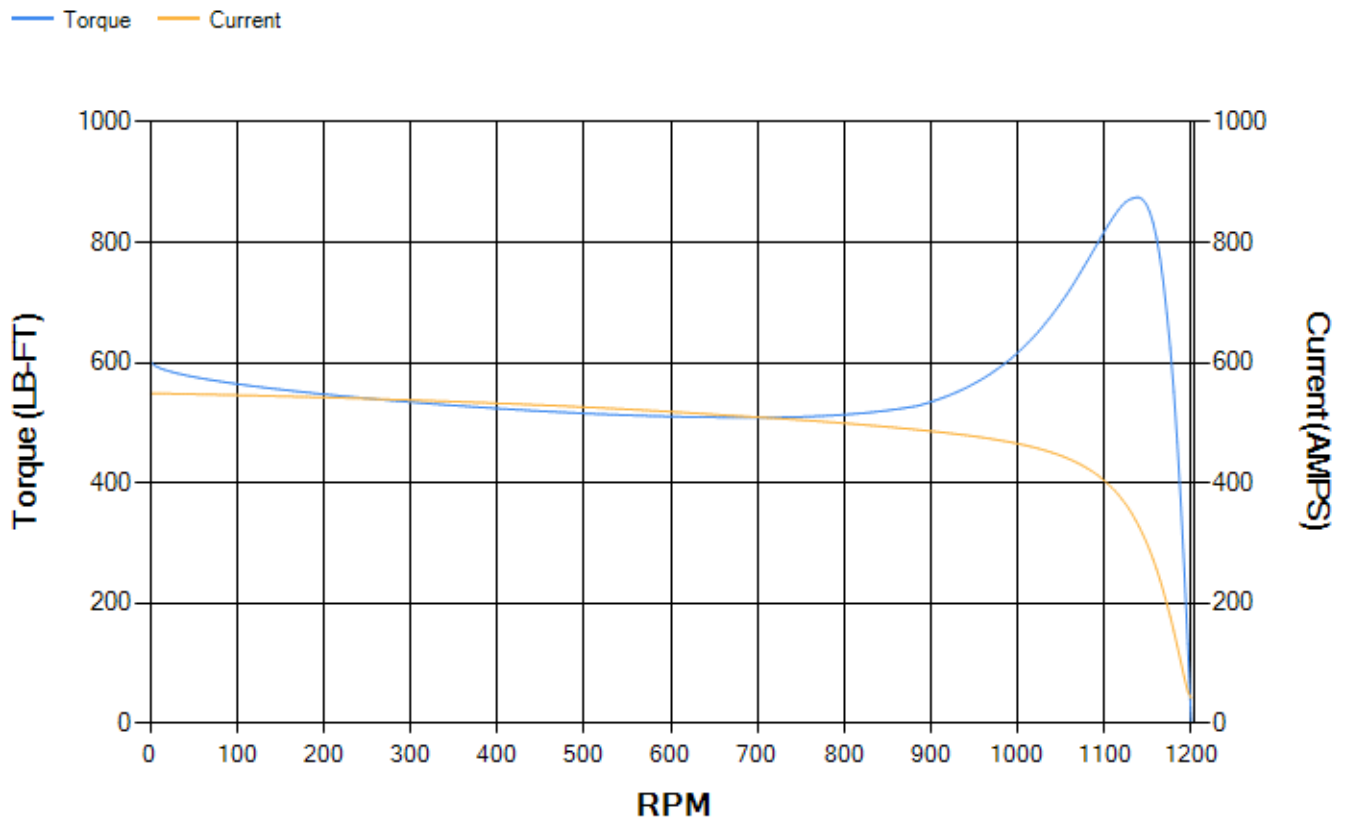
LOAD %	125.0	115.0	100.0	75.0	50.0	25.0	0.0
% EFF	93.82	94.08	94.59	94.62	94.17	91.27	0.00
% PF	82.48	81.75	80.04	74.72	63.65	41.17	3.29
AMPS	113.39	104.96	92.52	74.46	58.55	46.7	41.23

TORQ(FL)#FT	331.31	TORQ(LR)%FL	181.88	TORQ(BD)%FL	263.16
AMPS(LR)	548.95	PF AT START	0.35		

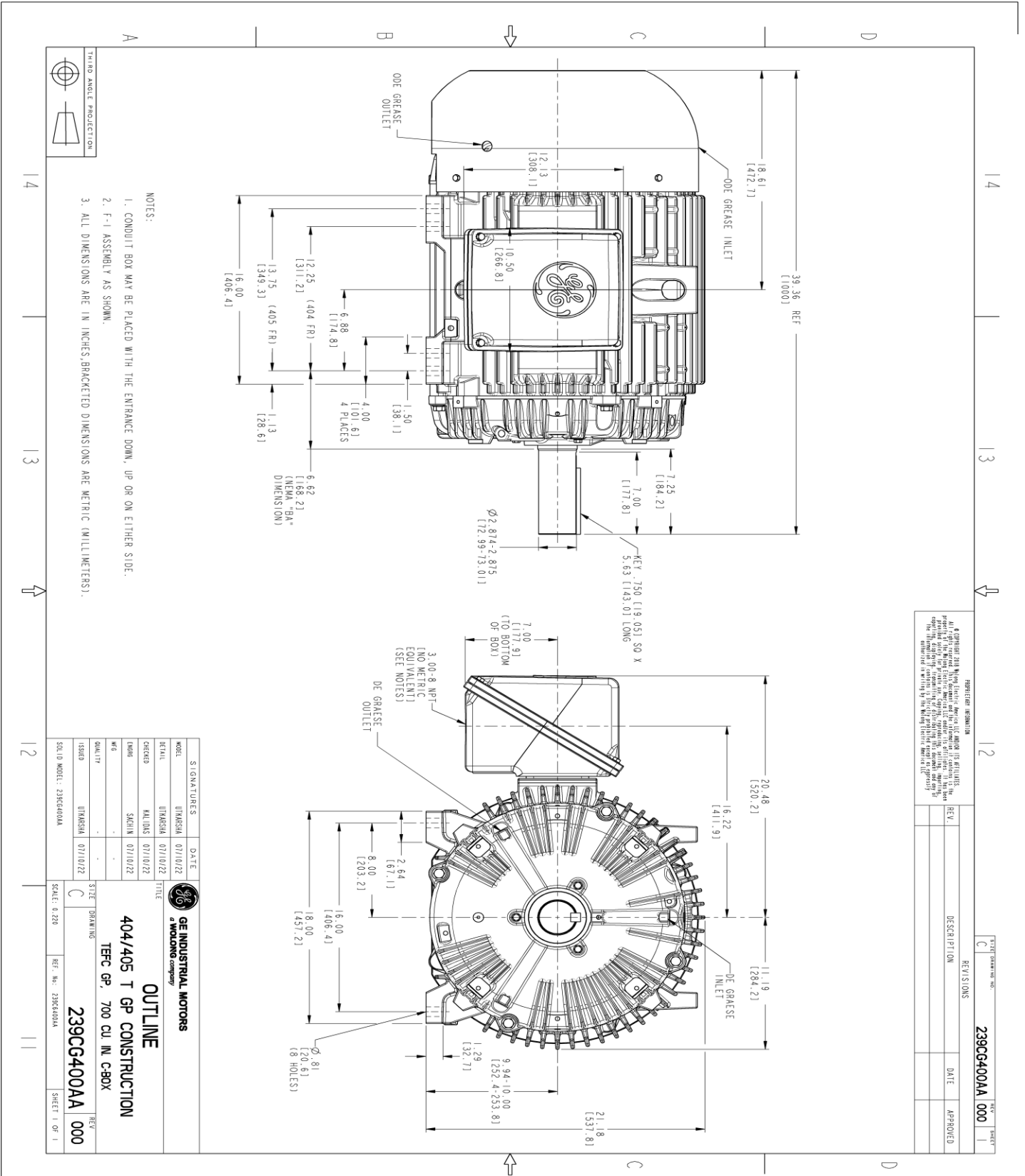
This motor is capable of two cold or one hot start with a maximum connected load inertia of 4906 Lb-Ft Sq (206.54 Kg-meter Sq)at 100% voltage, where the load torque varies with the square of the speed. Acceleration time with maximum inertia and the above load type is 42 seconds. Safe stall time at 100% voltage is 103 seconds cold, 56 seconds hot. Rotor inertia is 30.64 Lb-Ft Sq (1.29 Kg-meter Sq).

Open Circuit A-C:	0.58	Short Circuit D-C:	0.021
Short Circuit A-C:	0.038	X/R Ratio:	7.766
Stator Slots:	72	Rotor Slots:	58

Speed Torque Current Curve (First Connection, First Speed)



Marks:



- NOTES:
1. CONDUIT BOX MAY BE PLACED WITH THE ENTRANCE DOWN, UP OR ON EITHER SIDE.
 2. F-1 ASSEMBLY AS SHOWN.
 3. ALL DIMENSIONS ARE IN INCHES, BRACKETED DIMENSIONS ARE METRIC (MILLIMETERS).

REPRODUCTION INFORMATION
 It is prohibited to reproduce or disseminate this drawing, or any part thereof, without the written permission of GE Industrial Motors. The information contained herein is the property of GE Industrial Motors and is confidential. The information contained herein is for the use of the customer only and is not to be distributed to any other party without the written permission of GE Industrial Motors.

REV.	DESCRIPTION	DATE	APPROVED

SHEET DRAWING NO. **239CG400AA 000**



SIGNATURES	DATE
MODEL: UTKASHA	07/10/22
REV. BY: UTKASHA	07/10/22
CHECKED: MALINDAS	07/10/22
DRAWN: SACHIN	07/10/22
WFO:	
QUALITY:	
ISSUED: UTKASHA	07/10/22
SCALE: 0.250	
REF. NO.: 239CG400AA	

GE INDUSTRIAL MOTORS
 a WOLONG company

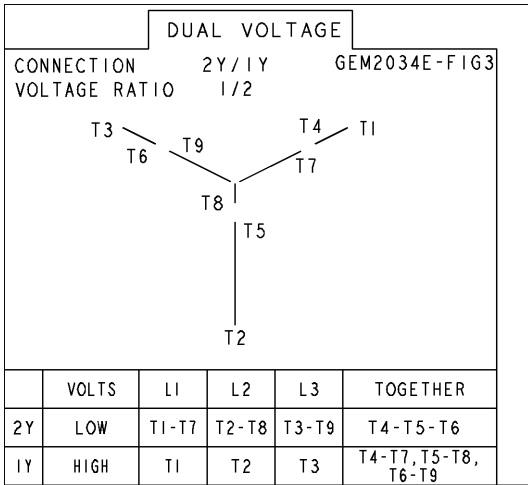
OUTLINE
 404/405 T GP CONSTRUCTION
 TERC GP, 700 CU IN, C-BOX

239CG400AA 000

REV. SHEET 1 OF 1

Marks:

Connection Diagram
GEM2034E-FIG3



End shield Assembly		
Part Description	DE Side Part#	ODE Side Part#
End Shield	115E4304AA1	115E4305ZA1
Bearing	235A2618AA04	235A2617AA01
Slinger/Inproseal	149C4399G06	

Fan & Fan Cover Assembly	
Part Description	Part#
Fan	159C7100G02
Fan Cover	128D6852AA1

Conduit & Accessories Box Assembly	
Part Description	Part#
Conduit Box	118D4408AD2

Mechanical Accessories	
Part Description	Part#
Brake	
Tachometer	

