



GE INDUSTRIAL MOTORS
a **WOLONG** company

Product Technical Information

October 8, 2022

Data shown is for the current revision model #. Ensure your nameplate model # matches.

Model Number:	5KS405BAA208
Catalog Number:	M1924
Instruction Manual:	GEI-56128
Connection Diagram:	GEM2034E-FIG7
Outline Drawing:	239CG400AA

Accessory Connection Diagrams			
Bearing Thermocouple:	None	Heater:	None
RTD:	None	Thermistor:	None
Thermostat:	None	Winding Thermocouple:	None
Bearing RTD:	None		

Table of Contents

Specification	01
Performance Characteristics	02
Outline Drawing	03
Connection Drawing(s)	04
Spare parts	05

Marks:

MODEL NUMBER:	5KS405BAA208	Estimated Weight:	1460 Lbs
Outline Drawing:	239CG400AA	Time Rating:	CONT
Connection Diagram:	GEM2034E-FIG7	Enclosure:	TEFC
Instruction Book:	GEI-56128	Encl Construction:	GP
Design Code:	40BD1159A	Ambient Max(°C):	40
Type:	KS	Alt Ambient Max(°C):	--
Frame:	405T	Insulation Class:	F
Phases:	3	NEMA Design:	B
Poles:	4	Nominal Efficiency:	95.4 %
Output Power:	100HP 74KW	Guaranteed Efficiency:	--
RPM:	1785	3/4 Load Efficiency:	--
Voltage:	460	KVA Code:	G
Hertz:	60	Max KVAR:	34.7
Amps - FL:	117.0	Power Factor:	83.5
Service Factor:	1.15	Bearing - DE:	6316ZC3S0
Alt Service Factor:	--	Bearing - ODE:	6213ZC3

Enclosure is Totally Enclosed Fan-Cooled

Stamped Nameplate Notes:

VT 0-60 HZ NEMA MG1-31



Additional Information:

4P - T EXTN
C/BOX 700 CU IN - 3.00" NPT
F1 MOUNTING
INVERTER DUTY PER NEMA MG1 PART 31
ALTERNATE RATING FOR PWM CONTROL:1.0SF 40C AMBIENT
VAR TORQUE RANGE 0-60 HZ



Performance Characteristics

1st Winding 1st Connection

Design: 40BD1159A

Marks:

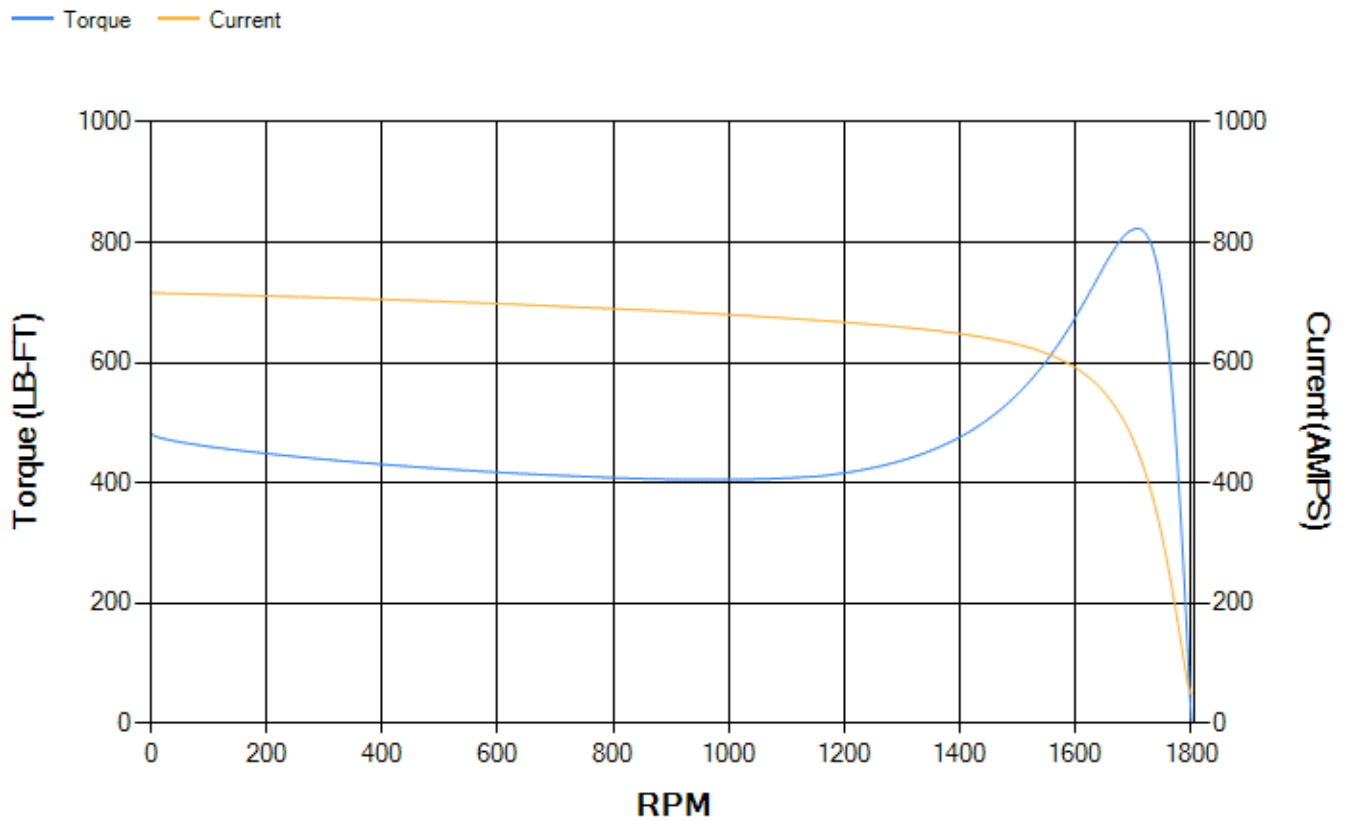
LOAD %	125.0	115.0	100.0	75.0	50.0	25.0	0.0
% EFF	94.93	95.13	95.58	95.57	95.2	92.81	0.00
% PF	85.46	84.81	83.3	78.51	68.1	45.2	3.16
AMPS	144.2	133.4	117.56	93.55	72.19	55.77	48.37

TORQ(FL)#FT	294.32	TORQ(LR)%FL	164.02	TORQ(BD)%FL	278.95
AMPS(LR)	715.84	PF AT START	0.32		

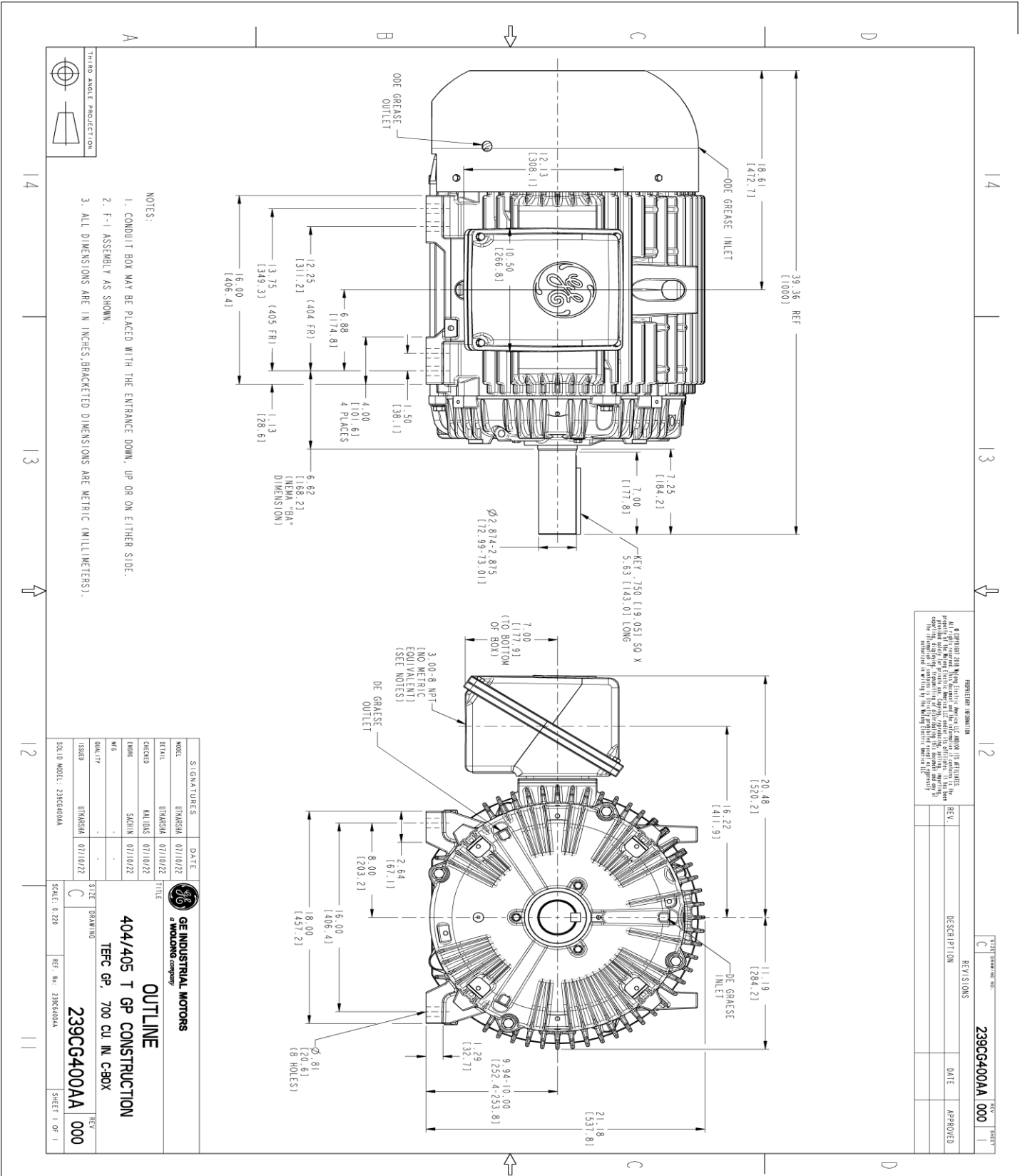
This motor is capable of two cold or one hot start with a maximum connected load inertia of 2242 Lb-Ft Sq (94.39 Kg-meter Sq)at 100% voltage, where the load torque varies with the square of the speed. Acceleration time with maximum inertia and the above load type is 35 seconds. Safe stall time at 100% voltage is 75 seconds cold, 42 seconds hot. Rotor inertia is 23.13 Lb-Ft Sq (0.97 Kg-meter Sq).

Open Circuit A-C:	0.673	Short Circuit D-C:	0.025
Short Circuit A-C:	0.041	X/R Ratio:	9.474
Stator Slots:	72	Rotor Slots:	58

Speed Torque Current Curve (First Connection, First Speed)



Marks:



- NOTES:
1. CONDUIT BOX MAY BE PLACED WITH THE ENTRANCE DOWN, UP OR ON EITHER SIDE.
 2. F-1 ASSEMBLY AS SHOWN.
 3. ALL DIMENSIONS ARE IN INCHES, BRACKETED DIMENSIONS ARE METRIC (MILLIMETERS).

REVISION INFORMATION
 REV. DISCRPTION DATE APPROVED
 C
 239CG400AA 000

SIGNATURES	DATE
MODEL: UTKASHA 07/10/22	
REVISED BY: UTKASHA 07/10/22	
CHECKED BY: KALIDAS 07/10/22	
DRAWN BY: SACHIN 07/10/22	
WFO	
QUALITY	
ISSUED BY: UTKASHA 07/10/22	
SCALE: 0.250	

GE INDUSTRIAL MOTORS
WOLONG company

OUTLINE
 404/405 T GP CONSTRUCTION
 TERC GP, 700 CU IN C-BOX
 239CG400AA
 REV. 000

SHEET 1 OF 1

Marks:

Connection Diagram
GEM2034E-FIG7



End shield Assembly		
Part Description	DE Side Part#	ODE Side Part#
End Shield	115E4304AA1	115E4305ZA1
Bearing	235A2618AA04	235A2617AA01
Slinger/Inproseal	149C4399G06	

Fan & Fan Cover Assembly	
Part Description	Part#
Fan	159C7100AA2
Fan Cover	128D6852AA1

Conduit & Accessories Box Assembly	
Part Description	Part#
Conduit Box	118D4408AD2

Mechanical Accessories	
Part Description	Part#
Brake	
Tachometer	

