



GE INDUSTRIAL MOTORS
a **WOLONG** company

Product Technical Information

February 17, 2023

Data shown is for the current revision model #. Ensure your nameplate model # matches.

Model Number:	5KS444BAA208
Catalog Number:	M1926
Instruction Manual:	GEI-56128
Connection Diagram:	GEM2034E-FIG7
Outline Drawing:	239CG700AA

Accessory Connection Diagrams

Bearing Thermocouple:	None	Heater:	None
RTD:	None	Thermistor:	None
Thermostat:	None	Winding Thermocouple:	None
Bearing RTD:	None		

Table of Contents

Specification	01
Performance Characteristics	02
Outline Drawing	03
Connection Drawing(s)	04
Spare parts	05

Marks:

MODEL NUMBER:	5KS444BAA208
Outline Drawing:	239CG700AA
Connection Diagram:	GEM2034E-FIG7
Instruction Book:	GEI-56128
Design Code:	44BD1156A
Type:	KS
Frame:	444T
Phases:	3
Poles:	4
Output Power:	125HP 92.5KW
RPM:	1785
Voltage:	460
Hertz:	60
Amps - FL:	145.0
Service Factor:	1.15
Alt Service Factor:	--

Estimated Weight:	1810 Lbs
Time Rating:	CONT
Enclosure:	TEFC
Encl Construction:	GP
Ambient Max(°C):	40
Alt Ambient Max(°C):	--
Insulation Class:	F
NEMA Design:	B
Nominal Efficiency:	95.4 %
Guaranteed Efficiency:	--
3/4 Load Efficiency:	--
KVA Code:	G
Max KVAR:	39.8
Power Factor:	84.5
Bearing - DE:	6318ZC3
Bearing - ODE:	6314ZC3

Enclosure is Totally Enclosed Fan-Cooled

Stamped Nameplate Notes:

VT 0-60 HZ NEMA MG1-31



Additional Information:

4P - T EXTN
C/BOX 700 CU IN - 3.00" NPT
F1 MOUNTING
INVERTER DUTY PER NEMA MG1 PART 31
ALTERNATE RATING FOR PWM CONTROL:1.0SF 40C AMBIENT
VAR TORQUE RANGE 0-60 HZ



Performance Characteristics

1st Winding 1st Connection

Design: 44BD1156A

Marks:

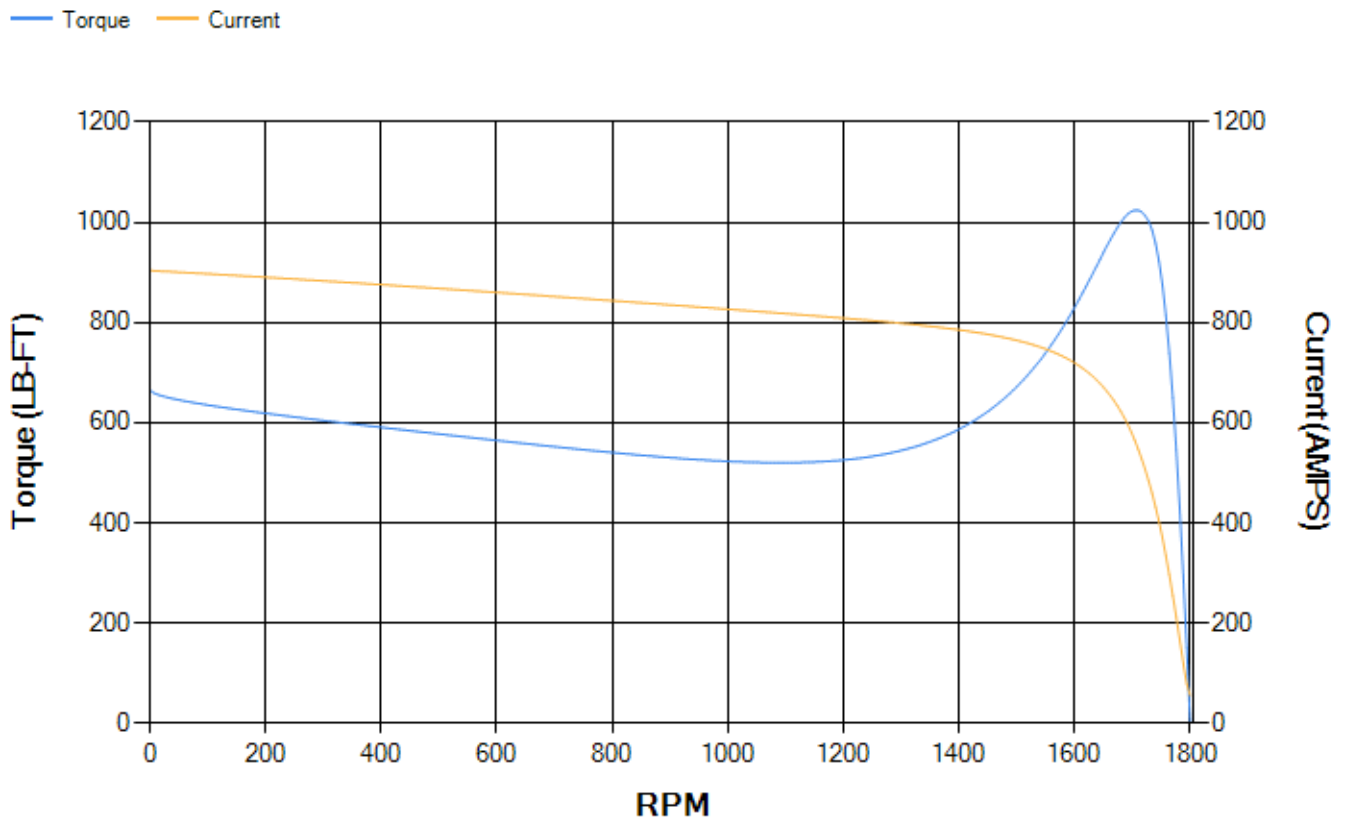
LOAD %	125.0	115.0	100.0	75.0	50.0	25.0	0.0
% EFF	95.06	95.26	95.69	95.67	95.3	92.94	0.00
% PF	86.35	85.84	84.59	80.38	70.75	48.14	3.4
AMPS	178.16	164.53	144.55	114.1	86.75	65.37	55.54

TORQ(FL)#FT	368.12	TORQ(LR)%FL	181	TORQ(BD)%FL	277.86
AMPS(LR)	903.79	PF AT START	0.32		

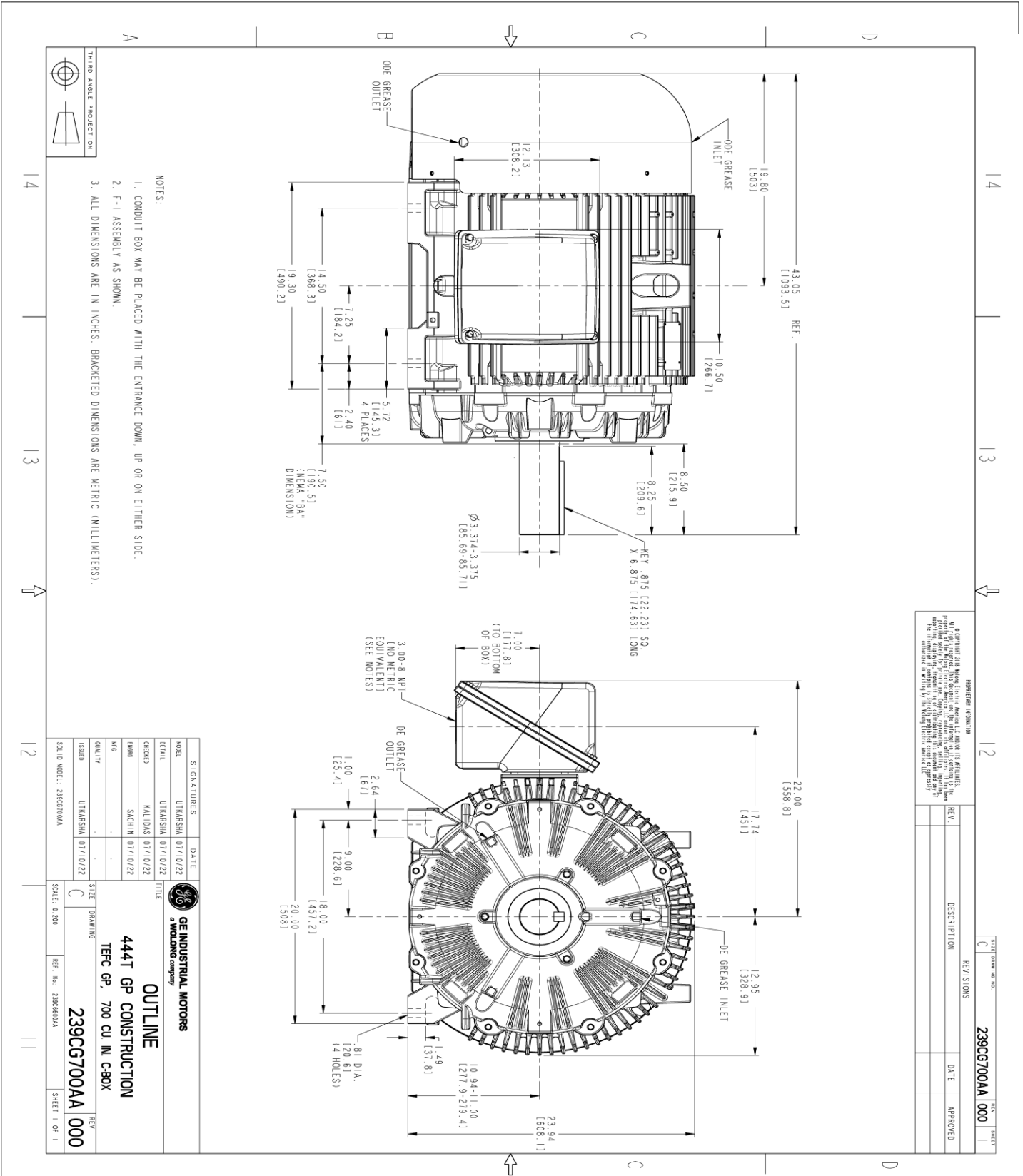
This motor is capable of two cold or one hot start with a maximum connected load inertia of 1902 Lb-Ft Sq (80.07 Kg-meter Sq)at 100% voltage, where the load torque varies with the square of the speed. Acceleration time with maximum inertia and the above load type is 23 seconds. Safe stall time at 100% voltage is 55 seconds cold, 28 seconds hot. Rotor inertia is 47.44 Lb-Ft Sq (2 Kg-meter Sq).

Open Circuit A-C:	0.686	Short Circuit D-C:	0.028
Short Circuit A-C:	0.039	X/R Ratio:	10.63
Stator Slots:	72	Rotor Slots:	58

Speed Torque Current Curve (First Connection, First Speed)



Marks:



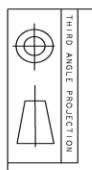
REGISTRATION INFORMATION

of GE Industrial Motors, Inc. is hereby acknowledged. No part of this drawing may be reproduced or transmitted in any form or by any means, electronic or mechanical, including photocopying, recording, or by any information storage and retrieval system, without the prior written permission of GE Industrial Motors, Inc. The information contained herein is the property of GE Industrial Motors, Inc. and is confidential.

REV.	DESCRIPTION	DATE	APPROVED

239CG700AA 000

- NOTES:
- CONDUIT BOX MAY BE PLACED WITH THE ENTRANCE DOWN, UP OR ON EITHER SIDE.
 - F-1 ASSEMBLY AS SHOWN.
 - ALL DIMENSIONS ARE IN INCHES. BRACKETED DIMENSIONS ARE METRIC (MILLIMETERS).



SIGNATURES	DATE	TITLE
MODEL	UTKARSHA 07/10/22	
DESIGNED BY	UTKARSHA 07/10/22	
CHECKED BY	KALIDAS 07/10/22	
DRAWN BY	SACHIN 07/10/22	
ISSUED BY		
QUALITY		
ISSUED	UTKARSHA 07/10/22	

GE INDUSTRIAL MOTORS
A WOLONG company

OUTLINE
444T GP CONSTRUCTION
TEFC GP, 700 CU IN. C-BOX

239CG700AA 000

SCALE: 0.200 REF. NO.: 239CG700AA SHEET 1 OF 1

Marks:

Connection Diagram
GEM2034E-FIG7



End shield Assembly		
Part Description	DE Side Part#	ODE Side Part#
End Shield	115E4355AA1	115E4354ZA1
Bearing	235A2614AA01	235A2616AA01
Slinger/Inproseal	149C4399G07	

Fan & Fan Cover Assembly	
Part Description	Part#
Fan	159C7100AA2
Fan Cover	128D6851AA1

Conduit & Accessories Box Assembly	
Part Description	Part#
Conduit Box	118D4408AD2

Mechanical Accessories	
Part Description	Part#
Brake	
Tachometer	

