



GE INDUSTRIAL MOTORS
a **WOLONG** company

Product Technical Information

May 2, 2023

Data shown is for the current revision model #. Ensure your nameplate model # matches.

Model Number:	5KS445BAA208
Catalog Number:	M1928
Instruction Manual:	GEI-56128
Connection Diagram:	GEM2034E-FIG7
Outline Drawing:	239CG600AA

Accessory Connection Diagrams

Bearing Thermocouple:	None	Heater:	None
RTD:	None	Thermistor:	None
Thermostat:	None	Winding Thermocouple:	None
Bearing RTD:	None		

Table of Contents

Specification	01
Performance Characteristics	02
Outline Drawing	03
Connection Drawing(s)	04
Spare parts	05

Marks:

MODEL NUMBER:	5KS445BAA208	Estimated Weight:	1970 Lbs
Outline Drawing:	239CG600AA	Time Rating:	CONT
Connection Diagram:	GEM2034E-FIG7	Enclosure:	TEFC
Instruction Book:	GEI-56128	Encl Construction:	GP
Design Code:	44BD1157A	Ambient Max(°C):	40
Type:	KS	Alt Ambient Max(°C):	--
Frame:	445T	Insulation Class:	F
Phases:	3	NEMA Design:	B
Poles:	4	Nominal Efficiency:	95.8 %
Output Power:	150HP 111KW	Guaranteed Efficiency:	--
RPM:	1780	3/4 Load Efficiency:	--
Voltage:	460	KVA Code:	G
Hertz:	60	Max KVAR:	42.5
Amps - FL:	169.0	Power Factor:	86.5
Service Factor:	1.15	Bearing - DE:	6318ZC3
Alt Service Factor:	--	Bearing - ODE:	6314ZC3

Enclosure is Totally Enclosed Fan-Cooled

Stamped Nameplate Notes:

VT 0-60 HZ NEMA MG1-31



Additional Information:

4P - T EXTN
C/BOX 700 CU IN - 3.00" NPT
F1 MOUNTING
INVERTER DUTY PER NEMA MG1 PART 31
ALTERNATE RATING FOR PWM CONTROL:1.0SF 40C AMBIENT
VAR TORQUE RANGE 0-60 HZ



Performance Characteristics

1st Winding 1st Connection

Design: 44BD1157A

Marks:

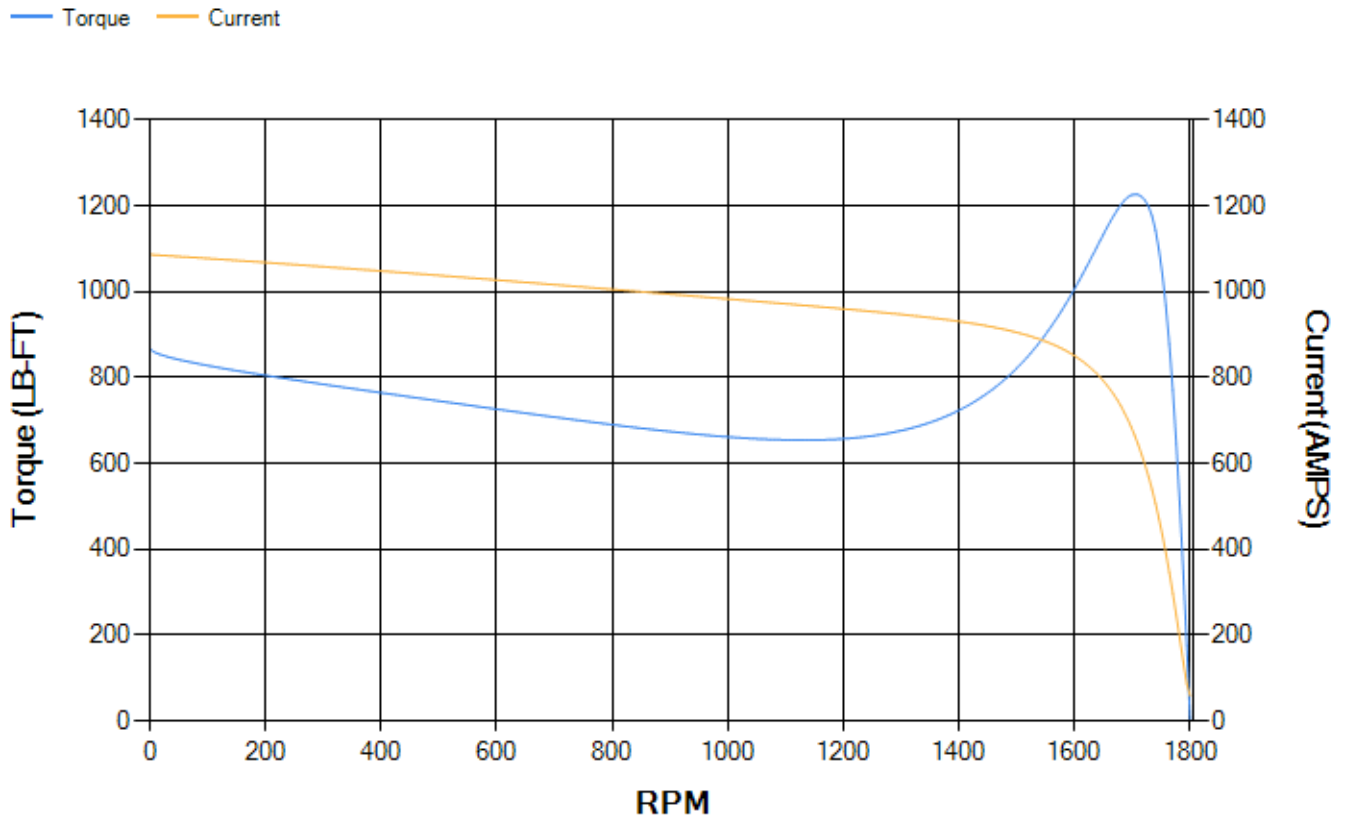
LOAD %	125.0	115.0	100.0	75.0	50.0	25.0	0.0
% EFF	95.38	95.58	96.03	96.06	95.8	93.81	0.00
% PF	87.62	87.25	86.27	82.72	74.1	52.01	3.29
AMPS	209.97	193.58	169.48	132.51	98.88	71.93	59.21

TORQ(FL)#FT	441.8	TORQ(LR)%FL	196.74	TORQ(BD)%FL	277.39
AMPS(LR)	1086.96	PF AT START	0.33		

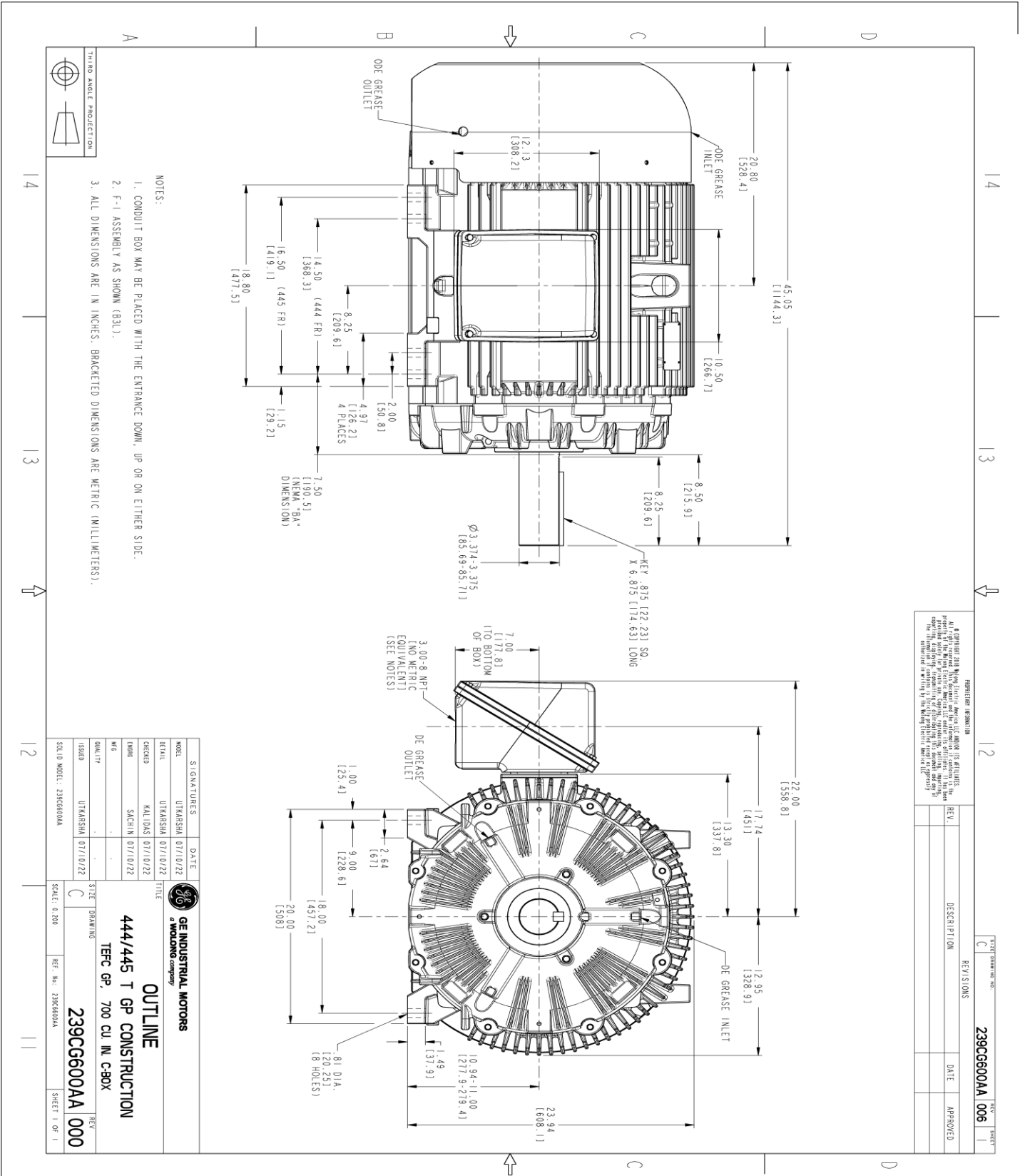
This motor is capable of two cold or one hot start with a maximum connected load inertia of 2367 Lb-Ft Sq (99.65 Kg-meter Sq)at 100% voltage, where the load torque varies with the square of the speed. Acceleration time with maximum inertia and the above load type is 23 seconds. Safe stall time at 100% voltage is 53 seconds cold, 27 seconds hot. Rotor inertia is 62.69 Lb-Ft Sq (2.64 Kg-meter Sq).

Open Circuit A-C:	0.754	Short Circuit D-C:	0.03
Short Circuit A-C:	0.037	X/R Ratio:	11.458
Stator Slots:	72	Rotor Slots:	58

Speed Torque Current Curve (First Connection, First Speed)



Marks:



REVISION INFORMATION

REV.	DESCRIPTION	DATE	APPROVED

SHEET DRAWING NO.	REV'S IONS	DATE	APPROVED
C			

239CG600AA 006

NOTES:

1. CONDUIT BOX MAY BE PLACED WITH THE ENTRANCE DOWN, UP OR ON EITHER SIDE.
2. F-1 ASSEMBLY AS SHOWN (B3L).
3. ALL DIMENSIONS ARE IN INCHES. BRACKETED DIMENSIONS ARE METRIC (MILLIMETERS).



THIRD ANGLE PROJECTION



OUTLINE

444/445 T GP CONSTRUCTION

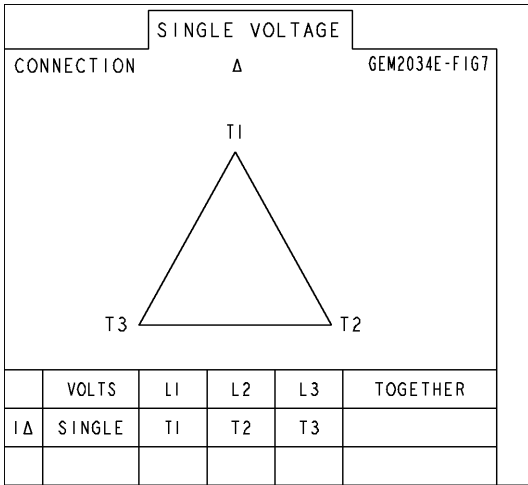
TEFC GP, 700 CU. IN. C-BOX

239CG600AA 000

SIGNATURES	DATE
MODEL: UTKARSHA 07/10/22	
DESIGNED: KALIDAS 07/10/22	
CHECKED: SACHIN 07/10/22	
ISSUED: UTKARSHA 07/10/22	
SCALE: 0.200	
REF. NO: 239CG600AA	
SHEET 1 OF 1	

Marks:

Connection Diagram
GEM2034E-FIG7



End shield Assembly		
Part Description	DE Side Part#	ODE Side Part#
End Shield	115E4355AA1	115E4354ZA1
Bearing	235A2614AA01	235A2616AA01
Slinger/Inproseal	149C4399G07	

Fan & Fan Cover Assembly	
Part Description	Part#
Fan	159C7100AA2
Fan Cover	128D6851AA1

Conduit & Accessories Box Assembly	
Part Description	Part#
Conduit Box	118D4408AD2

Mechanical Accessories	
Part Description	Part#
Brake	
Tachometer	

