



**GE INDUSTRIAL MOTORS**  
a **WOLONG** company

# Product Technical Information

May 2, 2023

Data shown is for the current revision model #. Ensure your nameplate model # matches.

<b>Model Number:</b>	<b>5KS447BAA118</b>
<b>Catalog Number:</b>	<b>M1961</b>
<b>Instruction Manual:</b>	GEI-56128
<b>Connection Diagram:</b>	GEM2034E-FIG20
<b>Outline Drawing:</b>	239CGJ00AB

## Accessory Connection Diagrams

<b>Bearing Thermocouple:</b>	None	<b>Heater:</b>	None
<b>RTD:</b>	None	<b>Thermistor:</b>	None
<b>Thermostat:</b>	None	<b>Winding Thermocouple:</b>	None
<b>Bearing RTD:</b>	None		

## Table of Contents

Specification	01
Performance Characteristics	02
Outline Drawing	03
Connection Drawing(s)	04
Spare parts	05

Marks:

<b>MODEL NUMBER:</b>	<b>5KS447BAA118</b>	<b>Estimated Weight:</b>	2450 Lbs
<b>Outline Drawing:</b>	239CGJ00AB	<b>Time Rating:</b>	CONT
<b>Connection Diagram:</b>	GEM2034E-FIG20	<b>Enclosure:</b>	TEFC
<b>Instruction Book:</b>	GEI-56128	<b>Encl Construction:</b>	GP
<b>Design Code:</b>	49BD0286A	<b>Ambient Max(°C):</b>	40
<b>Type:</b>	KS	<b>Alt Ambient Max(°C):</b>	--
<b>Frame:</b>	447TS	<b>Insulation Class:</b>	F
<b>Phases:</b>	3	<b>NEMA Design:</b>	B
<b>Poles:</b>	2	<b>Nominal Efficiency:</b>	95.4 %
<b>Output Power:</b>	200HP 148KW	<b>Guaranteed Efficiency:</b>	--
<b>RPM:</b>	3580	<b>3/4 Load Efficiency:</b>	--
<b>Voltage:</b>	460	<b>KVA Code:</b>	G
<b>Hertz:</b>	60	<b>Max KVAR:</b>	36.5
<b>Amps - FL:</b>	216.0	<b>Power Factor:</b>	91.0
<b>Service Factor:</b>	1.15	<b>Bearing - DE:</b>	6314ZC3
<b>Alt Service Factor:</b>	--	<b>Bearing - ODE:</b>	6314ZC3

Enclosure is Totally Enclosed Fan-Cooled

---

Stamped Nameplate Notes:

ROT CW FACING ODE LEAD/PH SEQ 1-2-3/1-2-3  
VT 0-60 HZ NEMA MG1-31



**Additional Information:**

2P - TS EXTN - SPLIT LEAD  
C/BOX 700 CU IN - 3.00" NPT  
F1 MOUNTING  
INVERTER DUTY PER NEMA MG1 PART 31  
ALTERNATE RATING FOR PWM CONTROL:1.0SF 40C AMBIENT  
VAR TORQUE RANGE 0-60 HZ



**Performance Characteristics**

1st Winding 1st Connection

**Design: 49BD0286A**

**Marks:**

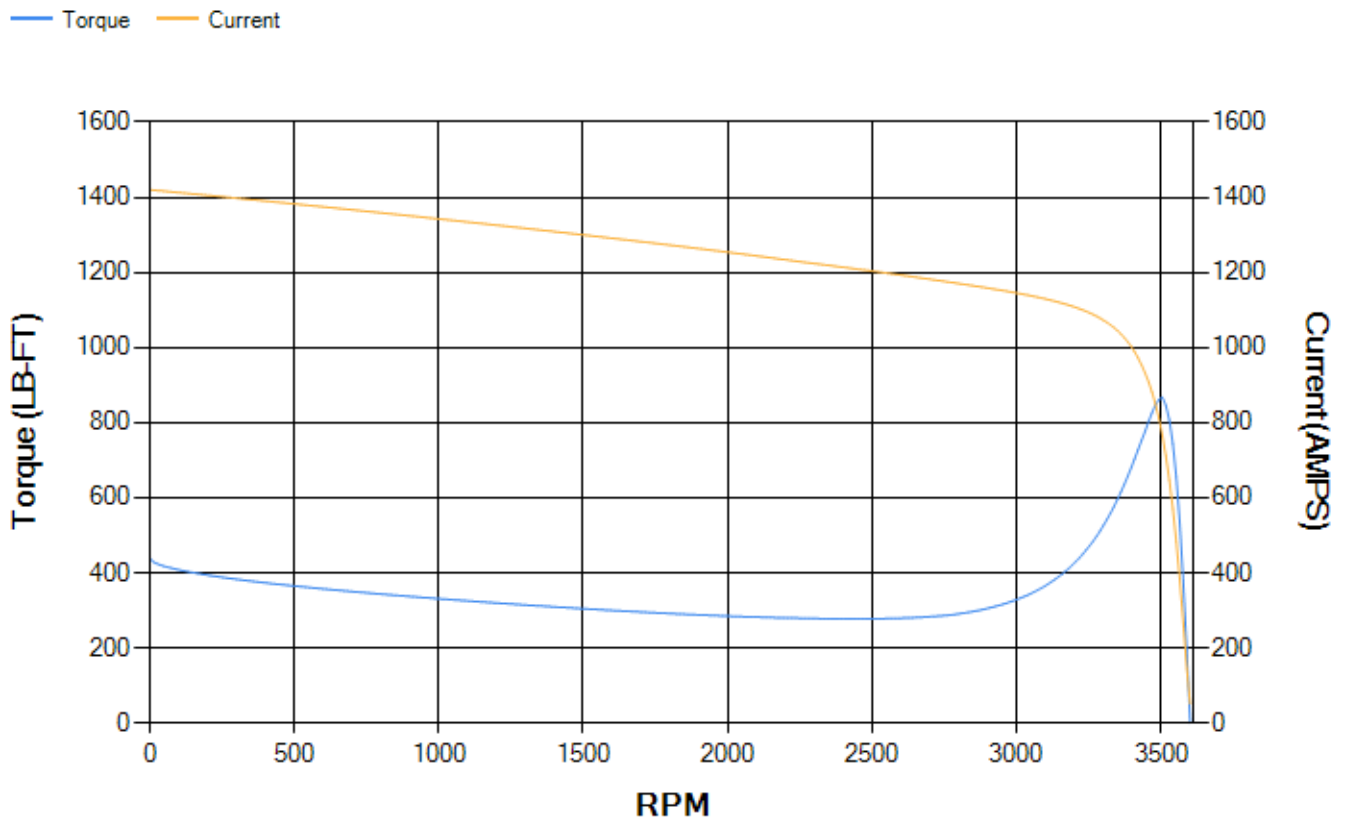
LOAD %	125.0	115.0	100.0	75.0	50.0	25.0	0.0
% EFF	95.18	95.38	95.81	95.78	95.4	93.05	0.00
% PF	90.97	91.07	90.93	89.55	84.86	68.15	5.98
AMPS	270.23	247.84	214.88	163.68	115.61	73.79	50.92

<b>TORQ(FL)#FT</b>	293.39	<b>TORQ(LR)%FL</b>	150.13	<b>TORQ(BD)%FL</b>	295.36
<b>AMPS(LR)</b>	1420.21	<b>PF AT START</b>	0.22		

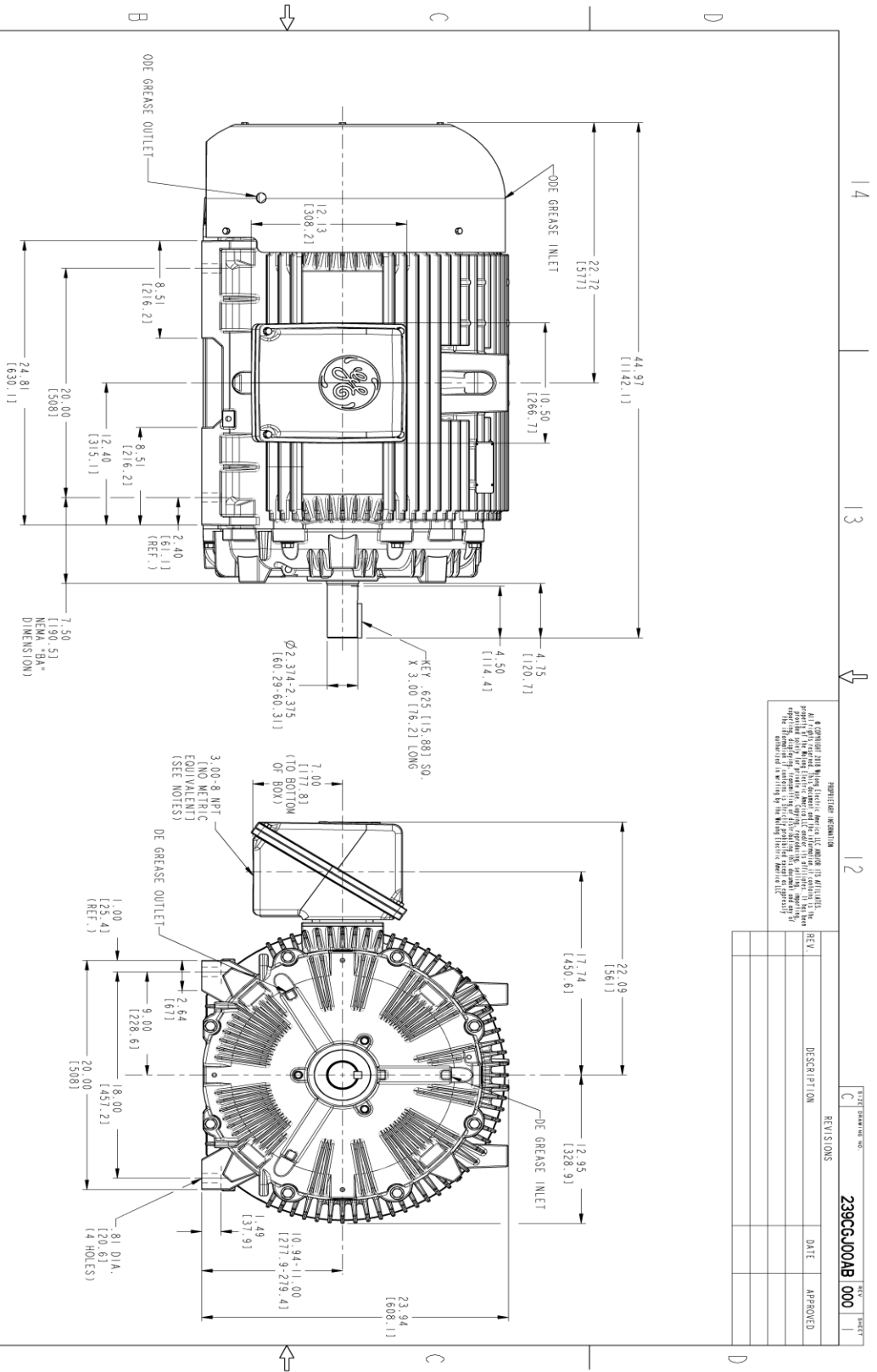
This motor is capable of two cold or one hot start with a maximum connected load inertia of 542 Lb-Ft Sq (22.82 Kg-meter Sq)at 100% voltage, where the load torque varies with the square of the speed. Acceleration time with maximum inertia and the above load type is 26 seconds. Safe stall time at 100% voltage is 60 seconds cold, 31 seconds hot. Rotor inertia is 34.11 Lb-Ft Sq (1.44 Kg-meter Sq).

<b>Open Circuit A-C:</b>	1.92	<b>Short Circuit D-C:</b>	0.034
<b>Short Circuit A-C:</b>	0.071	<b>X/R Ratio:</b>	12.92
<b>Stator Slots:</b>	48	<b>Rotor Slots:</b>	38

**Speed Torque Current Curve (First Connection, First Speed)**



Marks:



NOTES:

1. CONDUIT BOX MAY BE PLACED WITH THE ENTRANCE DOWN, UP OR ON EITHER SIDE.
2. F-I ASSEMBLY AS SHOWN.
3. ALL DIMENSIONS ARE IN INCHES. BRACKETED DIMENSIONS ARE METRIC (MILLIMETERS).

**PROHIBITION INFORMATION**  
 GE and the GE logo are registered trademarks of General Electric Company. All other marks are the property of their respective owners. No part of this drawing may be reproduced without the written permission of GE. The information contained herein is for informational purposes only and is not intended to constitute an offer of any product or service. GE makes no warranty, representation or guarantee, expressed or implied, for the accuracy, completeness or suitability of this information for any particular purpose. GE is not responsible for any errors or omissions in this document. © 2023 GE.

REV.	DESCRIPTION	DATE	APPROVED

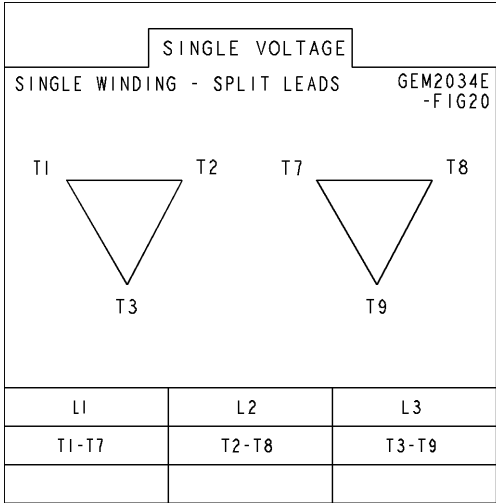


THIRD ANGLE PROJECTION

SIGNATURES	DATE	TITLE
MODEL	ANIL 10/11/2022	GE INDUSTRIAL MOTORS
DESIGN	ANIL 10/11/2022	447 TS GP CONSTRUCTION
CHECKED	SACHIN 10/11/2022	TFC GP 700 CU IN CONDUIT BOX
DATE	ANIL 10/11/2022	239CGJ00AB
ISSUED	ANIL 10/11/2022	000
SCALE: 0.180	REF. No: 239CG00AB	SHEET 1 OF 1

**Marks:**

**Connection Diagram**  
**GEM2034E-FIG20**



End shield Assembly		
Part Description	DE Side Part#	ODE Side Part#
End Shield	115E4354AA1	115E4354ZA1
Bearing	235A2616AA01	235A2616AA01
Slinger/Inproseal	149C4399G05	

Fan & Fan Cover Assembly	
Part Description	Part#
Fan	
Fan Cover	128D6851AA1

Conduit & Accessories Box Assembly	
Part Description	Part#
Conduit Box	118D4408AD2

Mechanical Accessories	
Part Description	Part#
Brake	
Tachometer	

