



GE INDUSTRIAL MOTORS
a **WOLONG** company

Product Technical Information

February 17, 2023

Data shown is for the current revision model #. Ensure your nameplate model # matches.

Model Number:	5KS449BAA101
Catalog Number:	M1996
Instruction Manual:	GEI-56128
Connection Diagram:	GEM2034E-FIG20
Outline Drawing:	239CG800AD

Accessory Connection Diagrams

Bearing Thermocouple:	None	Heater:	None
RTD:	None	Thermistor:	None
Thermostat:	None	Winding Thermocouple:	None
Bearing RTD:	None		

Table of Contents

Specification	01
Performance Characteristics	02
Outline Drawing	03
Connection Drawing(s)	04
Spare parts	05

Marks:

MODEL NUMBER:	5KS449BAA101	Estimated Weight:	2750 Lbs
Outline Drawing:	239CG800AD	Time Rating:	CONT
Connection Diagram:	GEM2034E-FIG20	Enclosure:	TEFC
Instruction Book:	GEI-56128	Encl Construction:	GP
Design Code:	49BD0289A	Ambient Max(°C):	40
Type:	KS	Alt Ambient Max(°C):	--
Frame:	449TS	Insulation Class:	F
Phases:	3	NEMA Design:	B
Poles:	2	Nominal Efficiency:	95.8 %
Output Power:	250HP 185KW	Guaranteed Efficiency:	95.0 %
RPM:	3580	3/4 Load Efficiency:	--
Voltage:	460	KVA Code:	G
Hertz:	60	Max KVAR:	40.0
Amps - FL:	265.0	Power Factor:	92.0
Service Factor:	1.15	Bearing - DE:	6314ZC3
Alt Service Factor:	--	Bearing - ODE:	6314ZC3

Enclosure is Totally Enclosed Fan-Cooled

Stamped Nameplate Notes:

FOR DIRECT COUPLED LOAD ONLY
 ROT CCW FACING ODE LEAD/PH SEQ 3-2-1/1-2-3
 VT 0-60 HZ NEMA MG1-31



Additional Information:

2P - TS EXTN - SPLIT LEAD
C/BOX 1260 CU IN - 2(4.00" NPT)
C/B GRD PLATE
F1 MOUNTING
INVERTER DUTY PER NEMA MG1 PART 31
ALTERNATE RATING FOR PWM CONTROL:1.0SF 40C AMBIENT
VAR TORQUE RANGE 0-60 HZ



Performance Characteristics

1st Winding 1st Connection

Design: 49BD0289A

Marks:

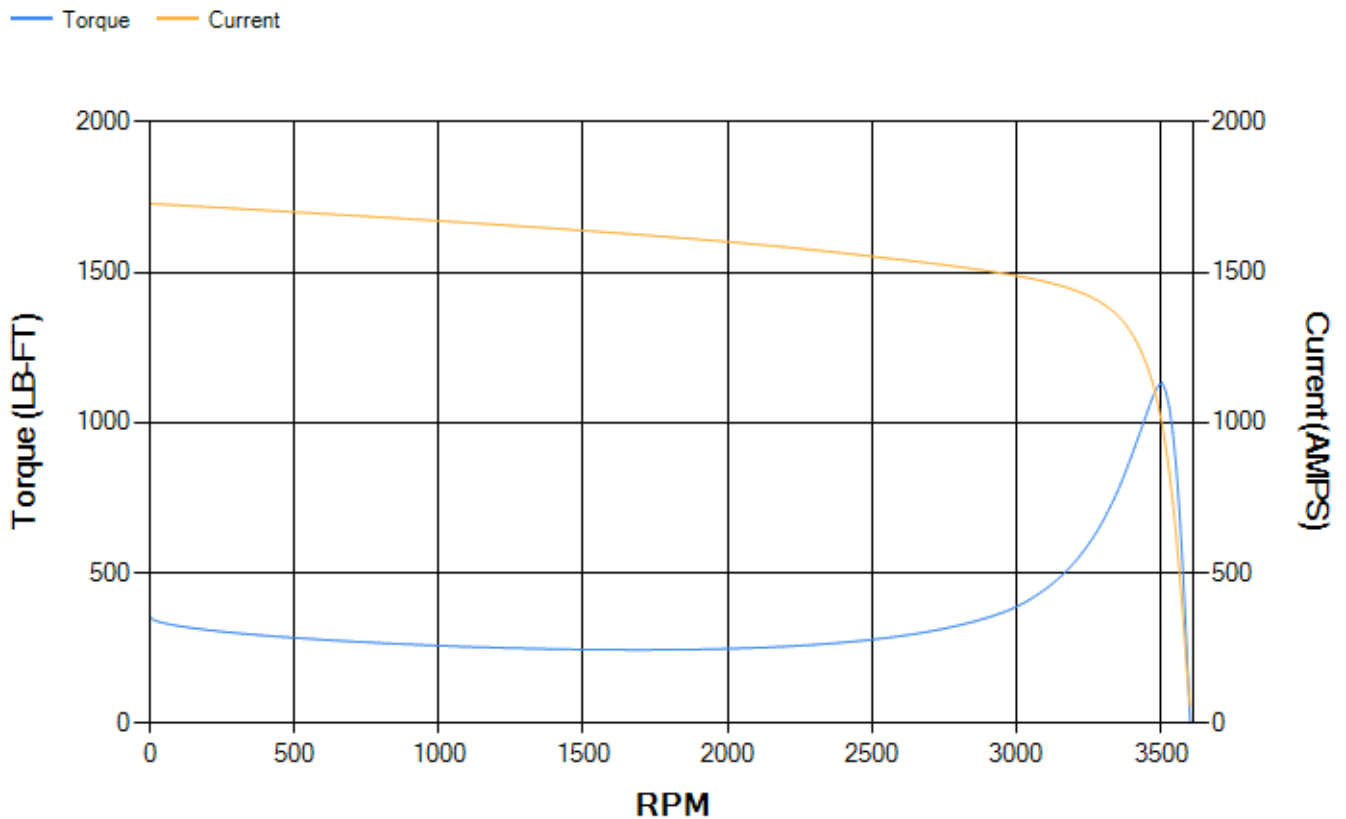
LOAD %	125.0	115.0	100.0	75.0	50.0	25.0	0.0
% EFF	95.53	95.72	96.16	96.18	95.93	93.98	0.00
% PF	92.14	92.26	92.21	91.16	87.27	72.25	5.76
AMPS	332.31	304.69	263.89	200.16	139.75	86.14	55.75

TORQ(FL)#FT	366.68	TORQ(LR)%FL	96.83	TORQ(BD)%FL	308.47
AMPS(LR)	1729.06	PF AT START	0.18		

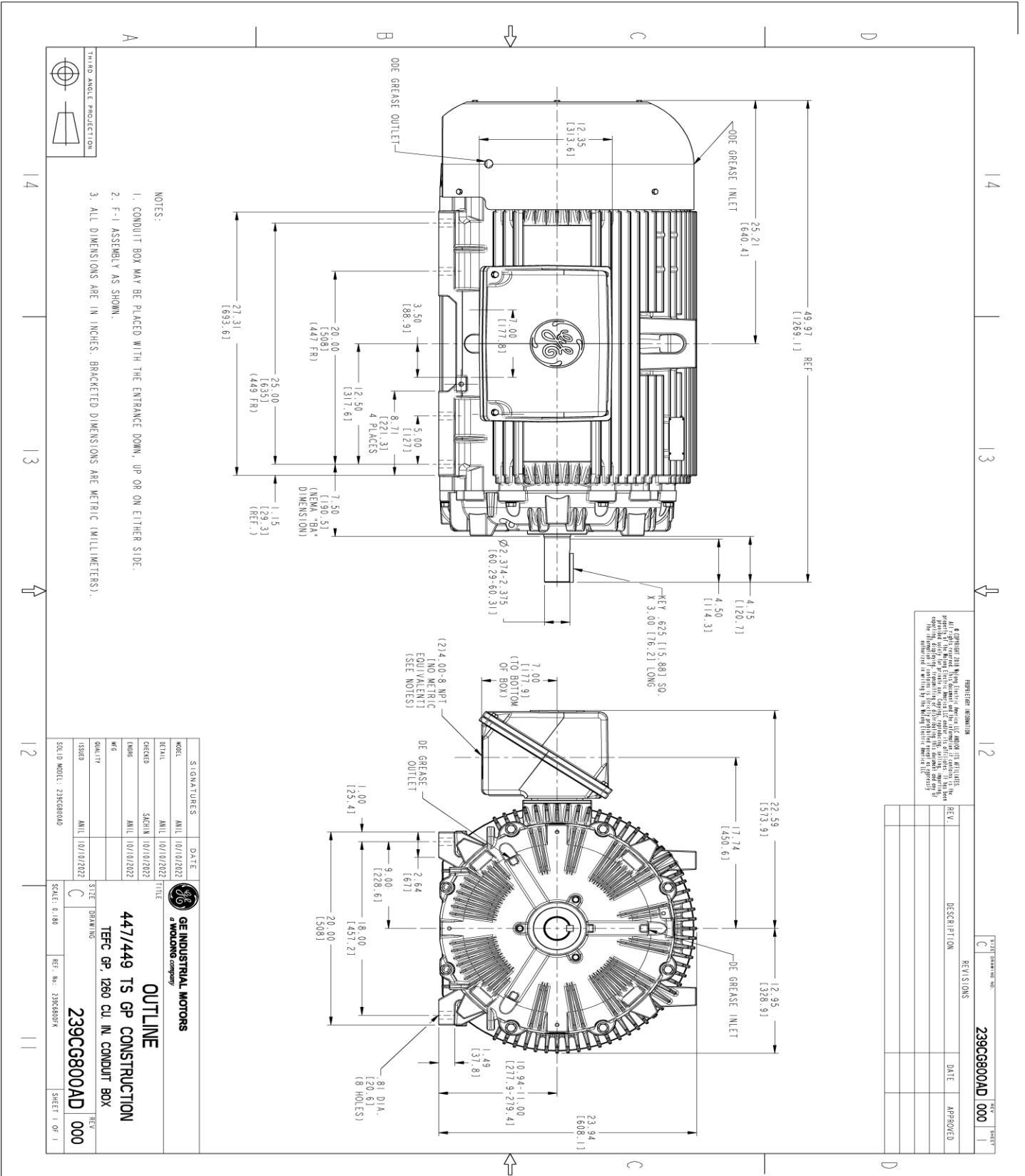
This motor is capable of two cold or one hot start with a maximum connected load inertia of 721 Lb-Ft Sq (30.35 Kg-meter Sq)at 100% voltage, where the load torque varies with the square of the speed. Acceleration time with maximum inertia and the above load type is 41 seconds. Safe stall time at 100% voltage is 96 seconds cold, 49 seconds hot. Rotor inertia is 47.29 Lb-Ft Sq (1.99 Kg-meter Sq).

Open Circuit A-C:	2.223	Short Circuit D-C:	0.036
Short Circuit A-C:	0.075	X/R Ratio:	13.755
Stator Slots:	48	Rotor Slots:	38

Speed Torque Current Curve (First Connection, First Speed)



Marks:



NOTES:

1. CONDUIT BOX MAY BE PLACED WITH THE ENTRANCE DOWN, UP OR ON EITHER SIDE.
2. F-I ASSEMBLY AS SHOWN.
3. ALL DIMENSIONS ARE IN INCHES. BRACKETED DIMENSIONS ARE METRIC (MILLIMETERS).

PROHIBITION INFORMATION
 All GE products are designed and manufactured in accordance with applicable laws and regulations. GE reserves the right to modify its products and specifications without notice. The information contained herein is for informational purposes only and does not constitute an offer or a contract. The information is provided for your reference only. GE is not responsible for any errors or omissions in this document.

REV.	DESCRIPTION	DATE	APPROVED

SIGNATURES	DATE
MODEL: 5KS449BAA101	AMIL 10/10/2022
REVISED: 5KS449BAA101	AMIL 10/10/2022
DESIGNED: SACHIN	AMIL 10/10/2022
DATE: 10/10/2022	
ISSUED: AMIL	10/10/2022
SCALE: 0.180	
REF. NO: 239CG800AD	
SHEET 1 OF 1	

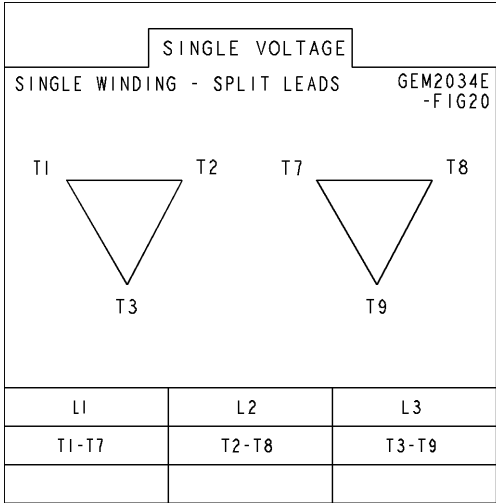
GE INDUSTRIAL MOTORS
 a WOLONG company

OUTLINE
 447/449 TS GP CONSTRUCTION
 TFC GP, 1280 CU IN CONDUIT BOX

239CG800AD

Marks:

Connection Diagram
GEM2034E-FIG20



End shield Assembly		
Part Description	DE Side Part#	ODE Side Part#
End Shield	115E4354AA1	115E4354ZA1
Bearing	235A2616AA01	235A2616AA01
Slinger/Inproseal	149C4399G05	

Fan & Fan Cover Assembly	
Part Description	Part#
Fan	
Fan Cover	128D6851AA1

Conduit & Accessories Box Assembly	
Part Description	Part#
Conduit Box	179B9058G03

Mechanical Accessories	
Part Description	Part#
Brake	
Tachometer	

