



GE INDUSTRIAL MOTORS
a **WOLONG** company

Product Technical Information

April 1, 2021

Data shown is for the current revision model #. Ensure your nameplate model # matches.

Model Number:	5KS182SAA205D2
Catalog Number:	M241
Instruction Manual:	GEI-56128
Connection Diagram:	GEM2034E-FIG3
Outline Drawing:	4002B5818PAP5933

Accessory Connection Diagrams

Bearing Thermocouple:	None	Heater:	None
RTD:	None	Thermistor:	None
Thermostat:	None	Winding Thermocouple:	None
Bearing RTD:	None		

Table of Contents

Specification	01
Performance Characteristics	02
Outline Drawing	03
Connection Drawing(s)	04
Spare parts	05

Marks:

MODEL NUMBER:	5KS182SAA205D2	Estimated Weight:	76 Lbs
Outline Drawing:	4002B5818PAP5933	Time Rating:	CONT
Connection Diagram:	GEM2034E-FIG3	Enclosure:	TEFC
Instruction Book:	GEI-56128	Encl Construction:	841
Design Code:	18BD1229A	Ambient Max(°C):	40
Type:	KS	Alt Ambient Max(°C):	--
Frame:	182T	Insulation Class:	H
Phases:	3	NEMA Design:	B
Poles:	4	Nominal Efficiency:	89.5 %
Output Power:	3HP 2.2KW	Guaranteed Efficiency:	88.5 %
RPM:	1770	3/4 Load Efficiency:	--
Voltage:	230/460	KVA Code:	K
Hertz:	60	Max KVAR:	1.4
Amps - FL:	8.0/4.0	Power Factor:	77.5
Service Factor:	1.15	Bearing - DE:	6206ZC3
Alt Service Factor:	--	Bearing - ODE:	6206ZC3

Enclosure is Totally Enclosed Fan-Cooled

Stamped Nameplate Notes:

DE BRG 30BC02JP30 ODE BRG 30BC02JP30
 EXCEPTION TO IEEE-STD-841-2009: DUAL VOLTAGE
 STAMP NP249A5564P051 AS BELOW:
 MODEL:5KS182SAA205D2 S/N: XXX
 CSA CERTIFIED CSA09.2216219 FOR EX NA IIC 200C GC
 CL 1 ZONE2 AEX NA IIC 200C;CL 1 DIV2 GRP ABCD 200C
 IN -40C <= AMB <= 40C, 1.0 SF ON SINE-WAVE PWR
 SURF TEMP 200C AT 1.15SF ON SINE-WAVE PWR
 OR 200C VT OR 200C CT OR 200C CHP PWM CONTROL
 ALTERNATE RATING FOR PWM CONTROL 1.0SF 40C AMB
 VT 0 - 60 HZ, CT 3-60 HZ, CHP 60-90 HZ.



Additional Information:

4P - T EXTN
STANDARD FLOOR MOUNT
C/BOX 55 CU IN-1.00 NPT
F1 CONDUIT BOX MOUNTING
PAINTED FRAME ID & SHAFT,
FAN COVER INSIDE & ODE E/S OUTSIDE
ROUTINE AND 5 POINT VIBRATION TESTS INCL IN C/BOX
GROUND SCREW ON FRAME
SHAFT RUNOUT LIMIT .001" TIR
OIL RESISTANT SLEEVING ON LEADS



Performance Characteristics

1st Winding 1st Connection

Design: 18BD1229A

Marks:

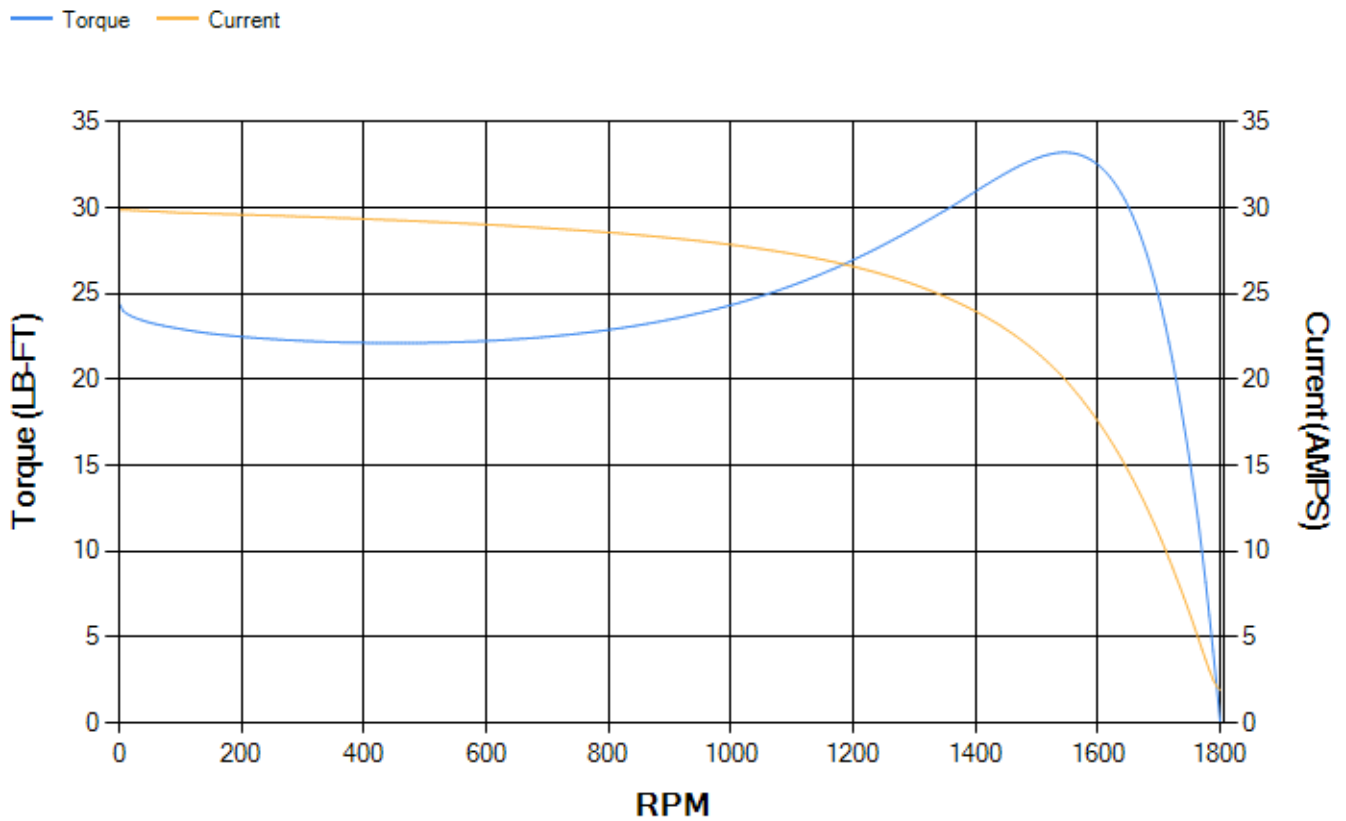
LOAD %	125.0	115.0	100.0	75.0	50.0	25.0	0.0
% EFF	89.45	89.79	90.36	90.25	89.01	83.29	0.00
% PF	81.27	80.1	79.15	71.05	58.95	37.75	6.46
AMPS	4.83	4.49	3.93	3.28	2.68	2.23	1.93

TORQ(FL)#FT	8.9	TORQ(LR)%FL	274.23	TORQ(BD)%FL	370.29
AMPS(LR)	29.91	PF AT START	0.55		

This motor is capable of two cold or one hot start with a maximum connected load inertia of 114 Lb-Ft Sq (4.8 Kg-meter Sq)at 100% voltage, where the load torque varies with the square of the speed. Acceleration time with maximum inertia and the above load type is 30 seconds. Safe stall time at 100% voltage is 67 seconds cold, 52 seconds hot. Rotor inertia is 0.3 Lb-Ft Sq (0.01 Kg-meter Sq).

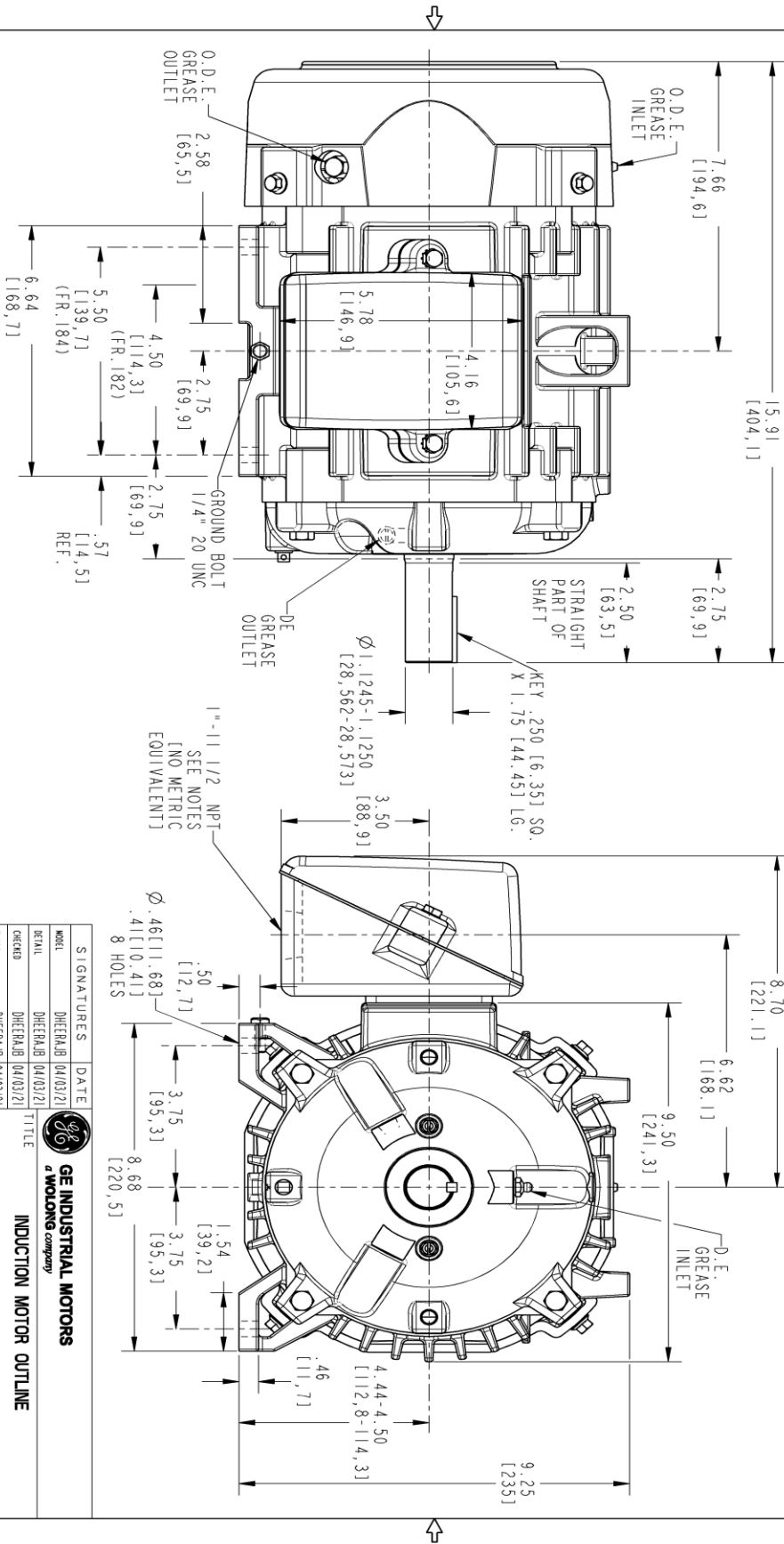
Open Circuit A-C:	0.29	Short Circuit D-C:	0.007
Short Circuit A-C:	0.014	X/R Ratio:	2.789
Stator Slots:	36	Rotor Slots:	28

Speed Torque Current Curve (First Connection, First Speed)



Marks:

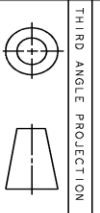
NOTE 1: CONDUIT BOX MAY BE ASSEMBLED WITH ENTRANCE UP, DOWN OR TO EITHER SIDE.
 NOTE 2: F1 ASSEMBLY AS SHOWN.
 NOTE 3: SHAFT RUNOUT WILL NOT EXCEED .001 T.I.R.
 NOTE 4: ALL DIMENSIONS ARE IN INCHES, BRACKETED DIMENSIONS ARE IN METRIC (MILLIMETERS).



PROPRIETARY INFORMATION
 © COPYRIGHT 2018 Wolog Electric America LLC AND/OR ITS AFFILIATES.
 All rights reserved. This document and the information it contains is the property of Wolog Electric America LLC and/or its affiliates. It has been provided solely for transmission for design and engineering purposes. It is not to be distributed, copied, or otherwise used in any way without the express written consent of Wolog Electric America LLC. Any unauthorized use is strictly prohibited except as expressly authorized in writing by Wolog Electric America LLC.

REV.	DESCRIPTION	DATE	APPROVED

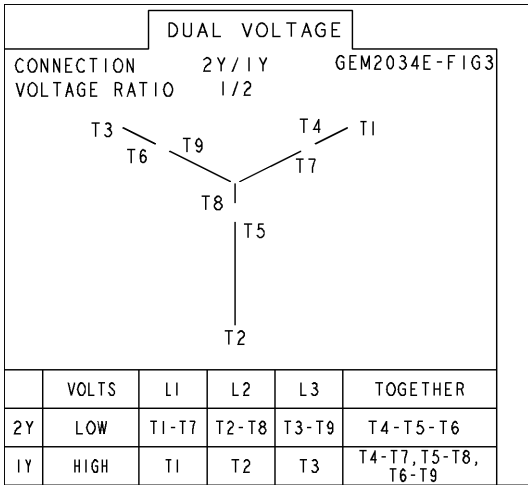
SIZE DRAWING NO.	B	REV	0	SHEET	1
4002B5818PAP5933					
REVOLUTIONS			REVISIONS		



SIGNATURES		DATE	
MODEL	DHEERABJ	04/03/21	
DETAIL	DHEERABJ	04/03/21	
CREATED	DHEERABJ	04/03/21	
ENGR	DHEERABJ	04/03/21	
WEG			
QUALITY			
ISSUED	DHEERABJ	04/03/21	
SOLID MODEL:	4002B5818PAP5933	SCALE:	0.400
TITLE		REF. NO.: 4002B5818PAP5933	
GE INDUSTRIAL MOTORS a Wolog company			
INDUCTION MOTOR OUTLINE STANDARD CONSTRUCTION FR182/94 T TFC			
SIZE DRAWING	4002B5818PAP5933		REV
B			0
SHEET DRAWING		SHEET 1 of 1	

Marks:

Connection Diagram
GEM2034E-FIG3



End shield Assembly		
Part Description	DE Side Part#	ODE Side Part#
End Shield	4004D5281PB1	4004D5281SG1
Bearing	235A2502AM01	235A2502AM01
Slinger/Inproseal	149C4399G16	149C4399G16

Fan & Fan Cover Assembly	
Part Description	Part#
Fan	4001A5914AM-G01
Fan Cover	4003C5786PA1

Conduit & Accessories Box Assembly	
Part Description	Part#
Conduit Box	4002B5721PA-G01

Mechanical Accessories	
Part Description	Part#
Brake	
Tachometer	

