



GE INDUSTRIAL MOTORS
a **WOLONG** company

Product Technical Information

June 19, 2020

Data shown is for the current revision model #. Ensure your nameplate model # matches.

Model Number:	5KS143SAA202D1
Catalog Number:	M497
Instruction Manual:	GEI-56128
Connection Diagram:	GEM2034E-FIG3
Outline Drawing:	4002B5814PBP5316

Accessory Connection Diagrams

Bearing Thermocouple:	None	Heater:	None
RTD:	None	Thermistor:	None
Thermostat:	None	Winding Thermocouple:	None
Bearing RTD:	None		

Table of Contents

Specification	01
Performance Characteristics	02
Outline Drawing	03
Connection Drawing(s)	04
Spare parts	05

Marks:

MODEL NUMBER:	5KS143SAA202D1	Estimated Weight:	43 Lbs
Outline Drawing:	4002B5814PBP5316	Time Rating:	CONT
Connection Diagram:	GEM2034E-FIG3	Enclosure:	TEFC
Instruction Book:	GEI-56128	Encl Construction:	X\$D
Design Code:	14BD1092A	Ambient Max(°C):	40
Type:	KS	Alt Ambient Max(°C):	65
Frame:	143TC	Insulation Class:	H
Phases:	3	NEMA Design:	B
Poles:	4	Nominal Efficiency:	85.5 %
Output Power:	1HP 0.7KW	Guaranteed Efficiency:	84.0 %
RPM:	1755	3/4 Load Efficiency:	85.0 %
Voltage:	230/460	KVA Code:	N
Hertz:	60	Max KVAR:	0.7
Amps - FL:	3.2/1.6	Power Factor:	70.5
Service Factor:	1.25	Bearing - DE:	6206ZC3
Alt Service Factor:	1.00	Bearing - ODE:	6205ZC3

Enclosure is Totally Enclosed Fan-Cooled

Stamped Nameplate Notes:

SF AMPS 3.6/1.8
 STAMP NP249A5564P051 AS BELOW:
 MODEL:5KS143SAA202D1 S/N: XXX
 CSA CERTIFIED CSA09.2216219 FOR EX NA IIC 200C GC
 CL 1 ZONE2 AEX NA IIC 200C;CL 1 DIV2 GRP ABCD 200C
 IN -25C <= AMB <= 40C, 1.0 SF ON SINE-WAVE PWR
 SURF TEMP 200C AT 1.25SF ON SINE-WAVE PWR
 OR 200 C VT OR 200 C CT OR 200 C CHP PWM CONTROL
 ALTERNATE RATING FOR PWM CONTROL 1.0SF 40C AMB
 VT 0-60 HZ, CT 3-60 HZ , CHP 60-90 HZ.

Additional Information:

4P - T EXTN
 STANDARD FLOOR MOUNT
 C/BOX 30 CU IN-0.75 NPT
 F1 CONDUIT BOX MOUNTING
 "C" FACE AT DE ENDSHIELD
 INPRO SEAL DE ONLY
 OIL RESISTANT SLEEVING ON LEADS



Performance Characteristics

1st Winding 1st Connection

Design: 14BD1092A

Marks:

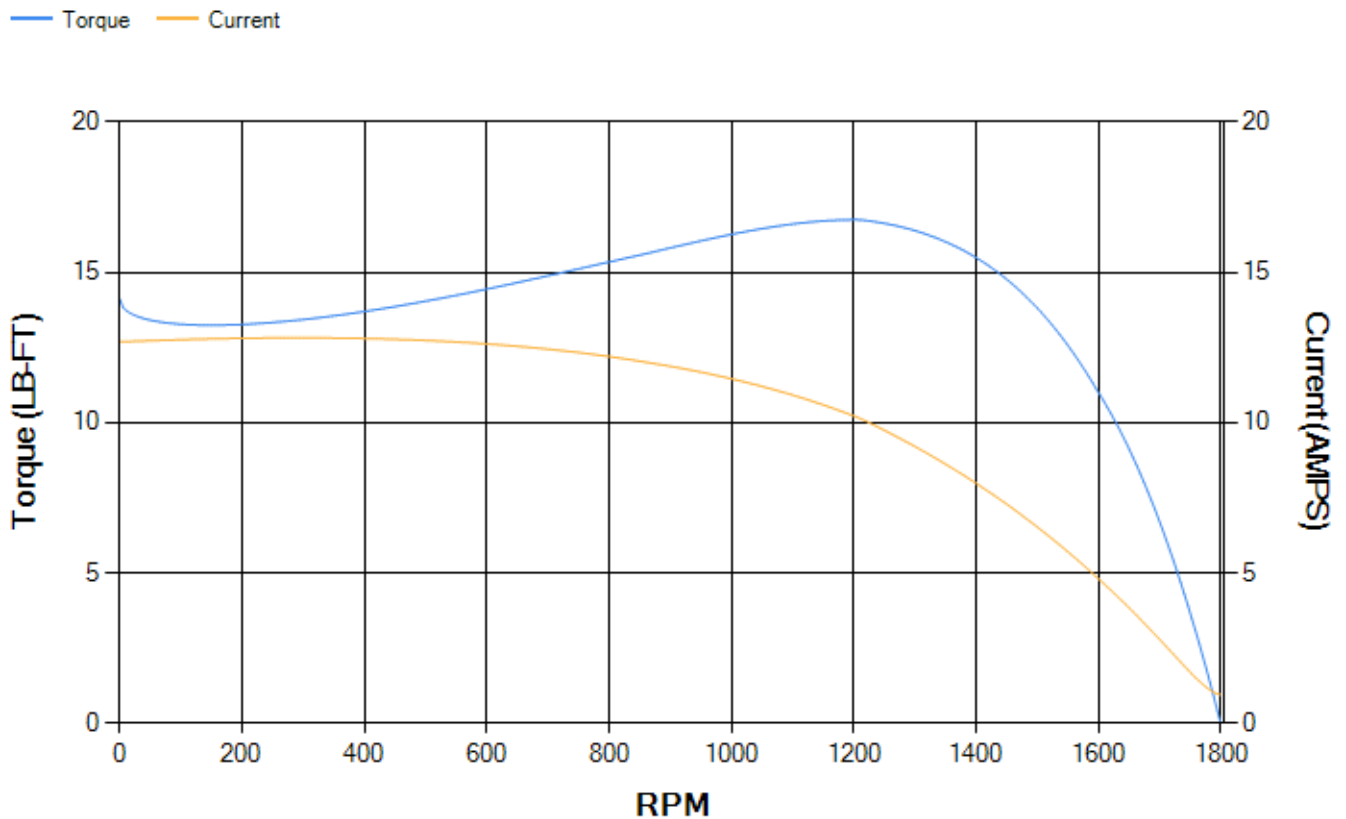
LOAD %	125.0	115.0	100.0	75.0	50.0	25.0	0.0
% EFF	85.48	85.65	85.9	84.94	82.06	72.51	0.00
% PF	76.81	74.65	72.4	61.65	48.5	30.38	8.26
AMPS	1.78	1.68	1.5	1.34	1.18	1.06	0.94

TORQ(FL)#FT 3 TORQ(LR)%FL 471.82 TORQ(BD)%FL 541.11
 AMPS(LR) 12.69 PF AT START 0.68

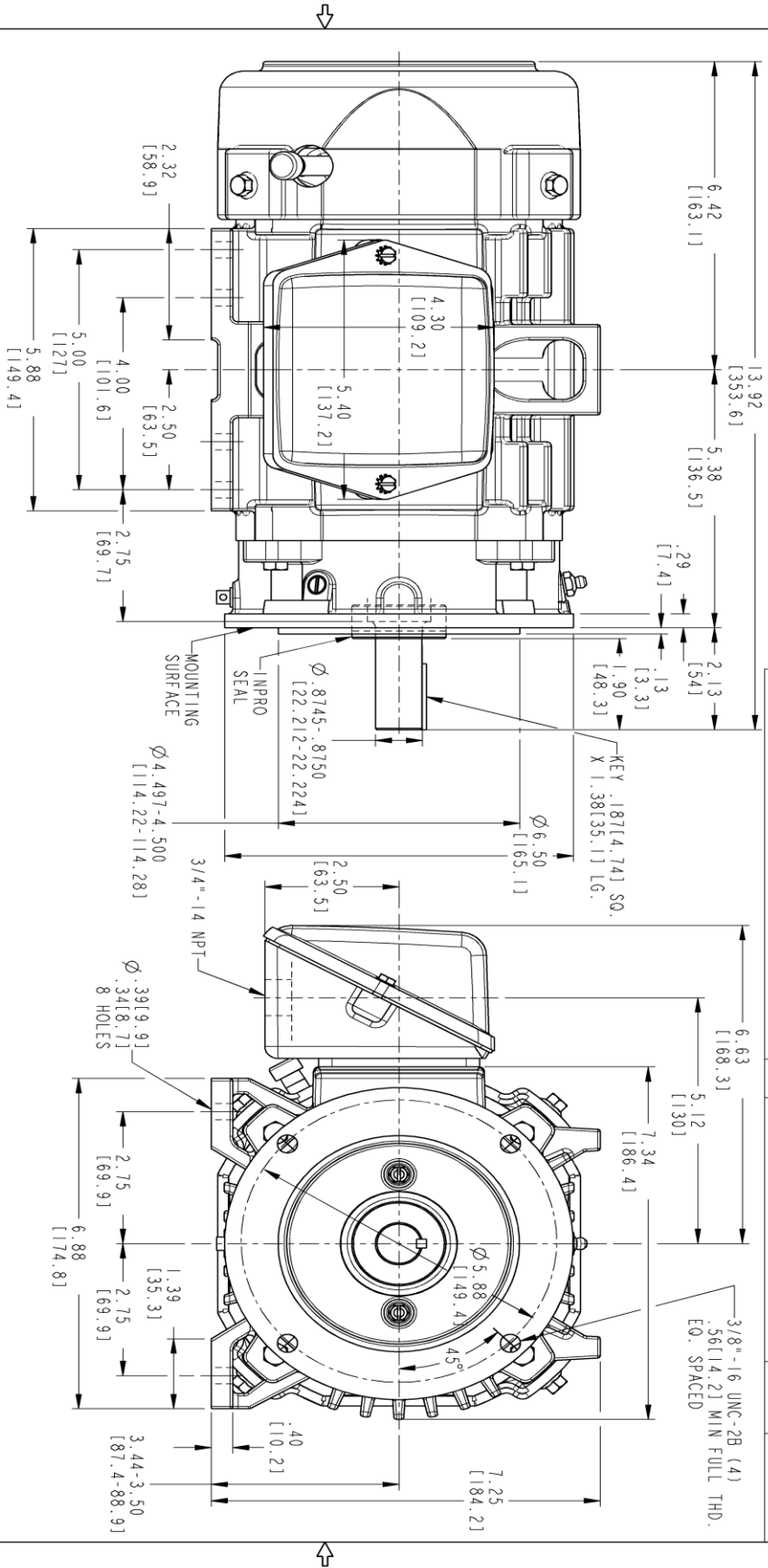
This motor is capable of two cold or one hot start with a maximum connected load inertia of 84 Lb-Ft Sq (3.54 Kg-meter Sq)at 100% voltage, where the load torque varies with the square of the speed. Acceleration time with maximum inertia and the above load type is 37 seconds. Safe stall time at 100% voltage is 82 seconds cold, 66 seconds hot. Rotor inertia is 0.08 Lb-Ft Sq (0 Kg-meter Sq).

Open Circuit A-C: 0.13 Short Circuit D-C: 0.005
 Short Circuit A-C: 0.006 X/R Ratio: 1.758
 Stator Slots: 36 Rotor Slots: 48

Speed Torque Current Curve (First Connection, First Speed)

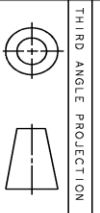


Marks:



PROPRIETARY INFORMATION
 © COPYRIGHT 2018 Wolog Electric America LLC AND/OR ITS AFFILIATES.
 All rights reserved. This document and the information it contains is the property of
 the Wolog Electric America LLC and/or its affiliates. It has been provided solely for
 transmitting design data to a customer and its use for other purposes is
 unauthorized. Any disclosure, copying, distribution, or reuse of this information is
 strictly prohibited except as expressly authorized in writing by
 the Wolog Electric America LLC.

REV.	DESCRIPTION	DATE	APPROVED
1	ISSAC# 14-0942	11/18/14	VIJAY
2	ISSAC# 18-0869	12/28/18	PRAASHANTH



THIRD ANGLE PROJECTION

NOTE 1: CONDUIT BOX MAY BE ASSEMBLED WITH ENTRANCE UP, DOWN OR TO EITHER SIDE.
 NOTE 2: F1 ASSEMBLY AS SHOWN. F2 ASSEMBLY LOCATION BOX ON OPPOSITE SIDE FROM SHOWN LOCATION.
 NOTE 3: MOUNTING SURFACES WILL BE SQUARE AND CONCENTRIC WITH SHAFT WITHIN .004 T.I.R.
 NOTE 4: SHAFT RUNOUT WILL NOT EXCEED .002 T.I.R.

GE INDUSTRIAL MOTORS
 a Wolog company

SIGNATURES	DATE
MODEL SMITHIN 08/13/01	
DETAIL DANKAR 08/13/01	
CHKD	
ENG	
DATE	
ISSUED	
QUALITY SMITHIN 08/13/01	

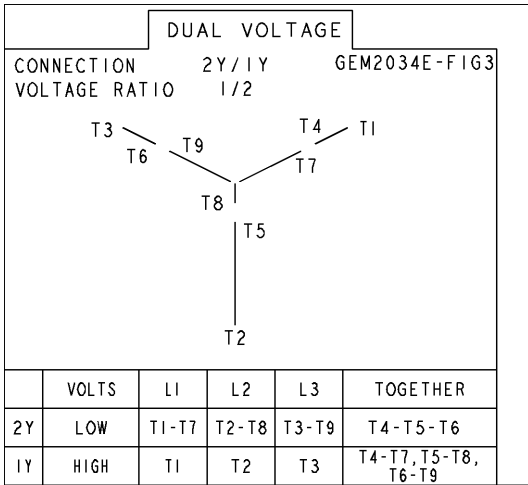
TITLE
INDUCTION MOTOR OUTLINE
 C- FACE AT DRIVE END (45° RABBER) WITH INPROSEAL
 FIVE FR40TC TFC XSD ULTRA

SCALE: 0.500 REF. No.: 4002B5814PB5310

4002B5814PB5316

Marks:

Connection Diagram
GEM2034E-FIG3



End shield Assembly		
Part Description	DE Side Part#	ODE Side Part#
End Shield	4004D5289PB1	4004D5280SG1
Bearing	235A2502AM01	235A2500AF01
Slinger/Inproseal	4002B5914AM1	149C4399G15

Fan & Fan Cover Assembly	
Part Description	Part#
Fan	4001A5914AM-G01
Fan Cover	4003C5785PA1

Conduit & Accessories Box Assembly	
Part Description	Part#
Conduit Box	4002B5718PA-G01

Mechanical Accessories	
Part Description	Part#
Brake	
Tachometer	

