



**GE INDUSTRIAL MOTORS**  
a **WOLONG** company

# Product Technical Information

November 27, 2020

Data shown is for the current revision model #. Ensure your nameplate model # matches.

<b>Model Number:</b>	<b>5KS364XAA250D3W6</b>
<b>Catalog Number:</b>	<b>M6630</b>
<b>Instruction Manual:</b>	GEI-56128
<b>Connection Diagram:</b>	GEM2034E-FIG7
<b>Outline Drawing:</b>	239C6200ACC

## Accessory Connection Diagrams

<b>Bearing Thermocouple:</b>	None	<b>Heater:</b>	None
<b>RTD:</b>	None	<b>Thermistor:</b>	None
<b>Thermostat:</b>	None	<b>Winding Thermocouple:</b>	None
<b>Bearing RTD:</b>	None		

## Table of Contents

Specification	01
Performance Characteristics	02
Outline Drawing	03
Connection Drawing(s)	04
Spare parts	05

Marks:

<b>MODEL NUMBER:</b>	<b>5KS364XAA250D3W6</b>	<b>Estimated Weight:</b>	970 Lbs
<b>Outline Drawing:</b>	239C6200ACC	<b>Time Rating:</b>	CONT
<b>Connection Diagram:</b>	GEM2034E-FIG7	<b>Enclosure:</b>	TEFC
<b>Instruction Book:</b>	GEI-56128	<b>Encl Construction:</b>	661
<b>Design Code:</b>	36BD1188A	<b>Ambient Max(°C):</b>	40
<b>Type:</b>	KS	<b>Alt Ambient Max(°C):</b>	--
<b>Frame:</b>	364T	<b>Insulation Class:</b>	H
<b>Phases:</b>	3	<b>NEMA Design:</b>	B
<b>Poles:</b>	4	<b>Nominal Efficiency:</b>	95.0 %
<b>Output Power:</b>	60HP 44.4KW	<b>Guaranteed Efficiency:</b>	94.5 %
<b>RPM:</b>	1780	<b>3/4 Load Efficiency:</b>	95.2 %
<b>Voltage:</b>	460	<b>KVA Code:</b>	G
<b>Hertz:</b>	60	<b>Max KVAR:</b>	20.9
<b>Amps - FL:</b>	71.7	<b>Power Factor:</b>	82.5
<b>Service Factor:</b>	1.15	<b>Bearing - DE:</b>	NU 314
<b>Alt Service Factor:</b>	--	<b>Bearing - ODE:</b>	6314ZZC3

Enclosure is Totally Enclosed Fan-Cooled

---

Stamped Nameplate Notes:

API STD 661

ROLLER BEARING - FOR BELTED LOAD ONLY

DE BRG 70RU03J, ODE BRG 70BC03JPP3

IP 56

STAMP NP249A5564P051 AS BELOW:

MODEL:5KS364XAA250D3W6 S/N: XXX

CSA CERTIFIED CSA09.2216219 FOR EX NA IIC 200 C GC

CL 1 ZONE2 AEX NA IIC 200C;CL 1 DIV2 GRP ABCD 200C

IN -25C <= AMB <= 40C, 1.0 SF ON SINE-WAVE PWR

SURF TEMP 260C AT 1.15SF ON SINE-WAVE PWR

OR 200C VT OR 230C CT OR 200C CHP PWM CONTROL

ALTERNATE RATING FOR PWM CONTROL 1.0SF 40C AMB

VT 0 - 60 HZ, CT 6 - 60 HZ, CHP 60 - 90 HZ.



**Additional Information:**

4P - T EXTN  
PAINTED FRAME ID & SHAFT,  
FAN COVER INSIDE & ODE E/S OUTSIDE  
C/BOX 346 CU IN - 3.00" NPT  
INPRO SEAL BOTH ENDS  
OIL RESISTANT SLEEVING ON LEADS  
.002" TIR SHAFT RUNOUT  
ROUTINE TEST REPORT AND 5 POINT VIBRATION TEST  
REPORT INCLUDED IN C/B  
COPPER WASHER UNDER HEADS OF BEARING CAP BOLTS,  
APPLY TITE-SEAL (A50CD427A) ON BEARING CAP SCREWS,  
RABBETS AND PLUG THREADS.  
B5F4C4 HIGH FATIGUE STEEL AISI 4142 SHAFT MATERIAL  
GROUND PAD  
VERTICAL MOUNT SHAFT DOWN WITH DRIP COVER



**Performance Characteristics**

1st Winding 1st Connection

**Design: 36BD1188A**

**Marks:**

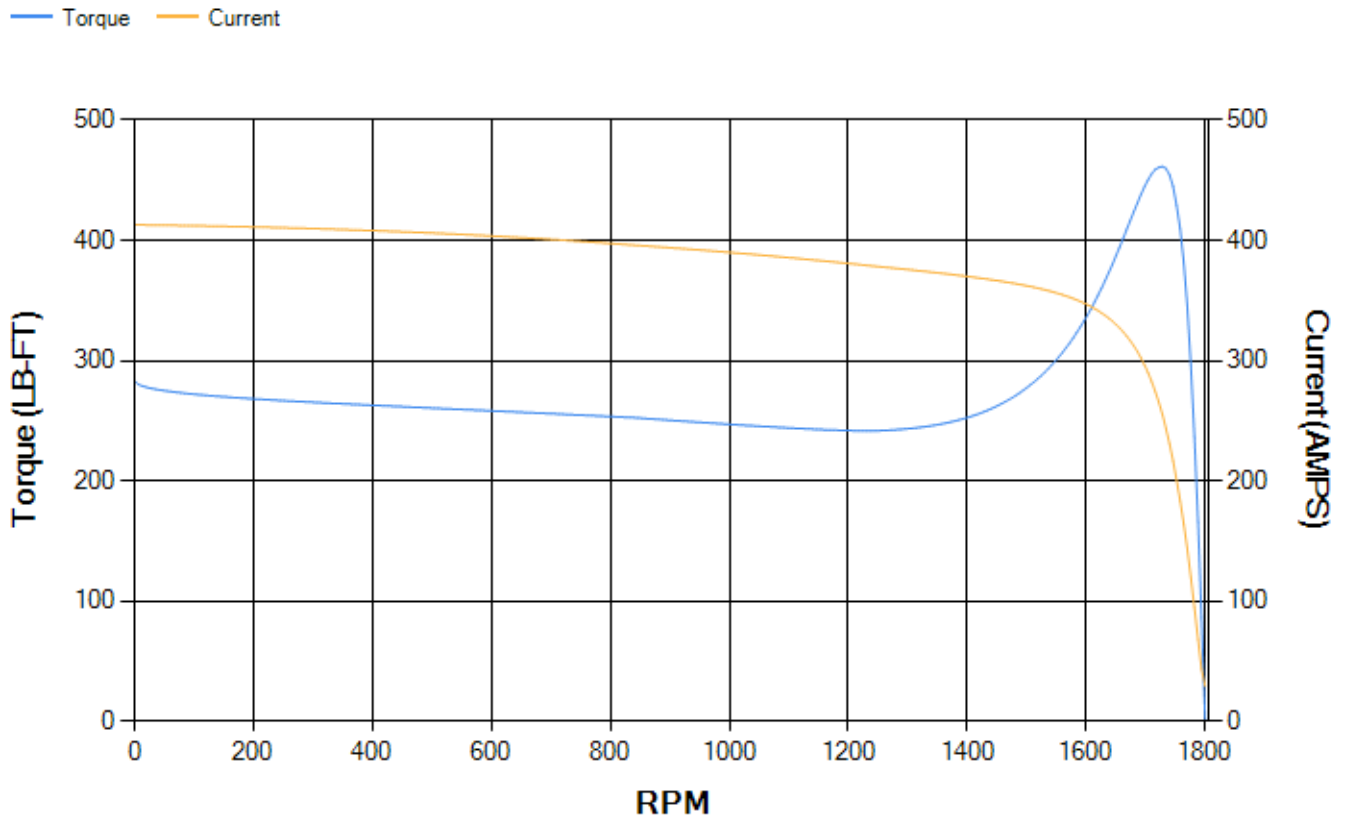
LOAD %	125.0	115.0	100.0	75.0	50.0	25.0	0.0
% EFF	94.37	94.62	95.12	95.18	94.85	92.37	0.00
% PF	84.32	83.76	82.36	77.74	67.51	44.89	3.18
AMPS	88.21	81.49	71.51	56.91	43.85	33.86	29.19

<b>TORQ(FL)#FT</b>	176.81	<b>TORQ(LR)%FL</b>	160.18	<b>TORQ(BD)%FL</b>	260.3
<b>AMPS(LR)</b>	412.91	<b>PF AT START</b>	0.31		

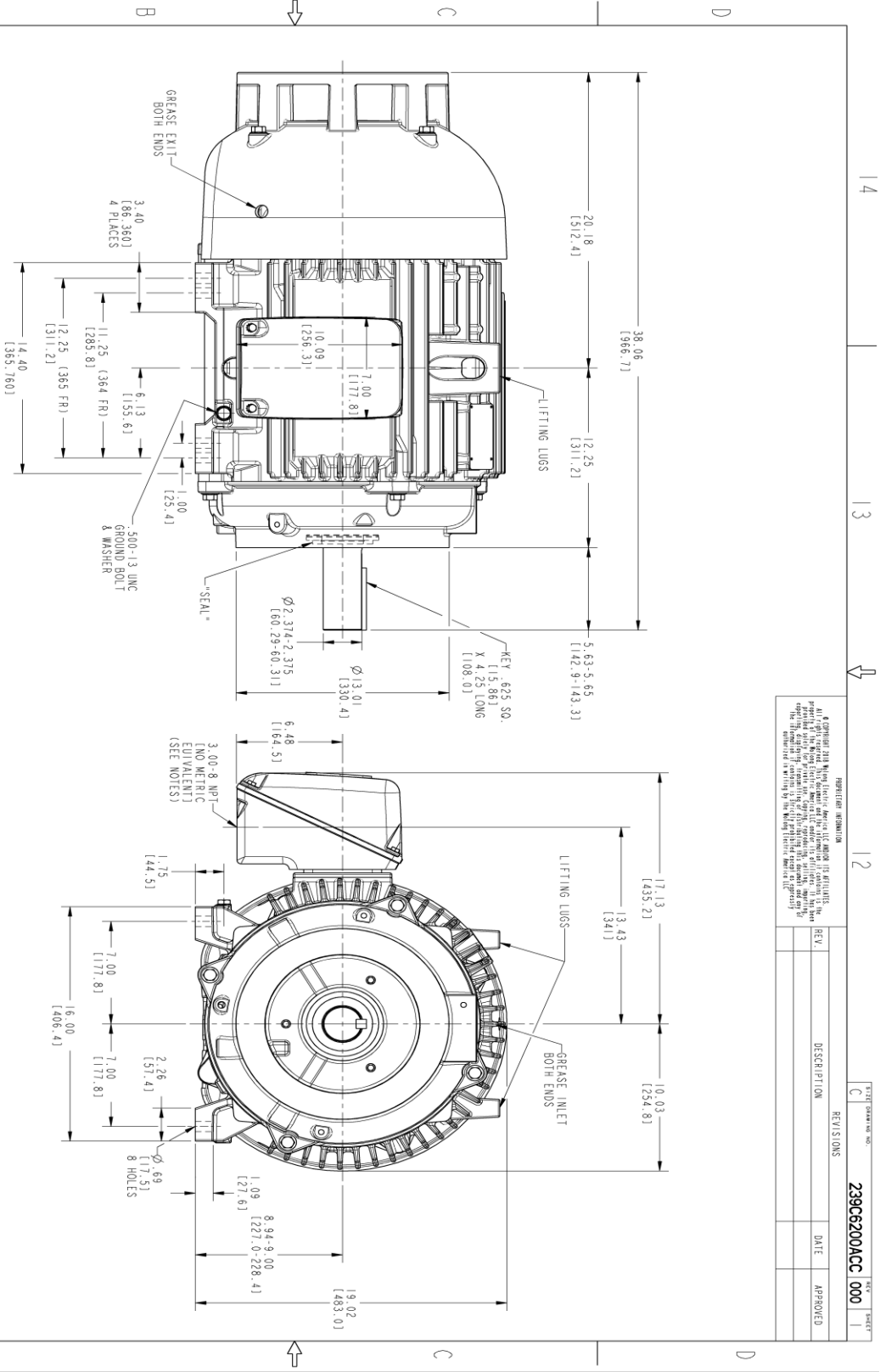
This motor is capable of two cold or one hot start with a maximum connected load inertia of 1190 Lb-Ft Sq (50.1 Kg-meter Sq)at 100% voltage, where the load torque varies with the square of the speed. Acceleration time with maximum inertia and the above load type is 33 seconds. Safe stall time at 100% voltage is 76 seconds cold, 39 seconds hot. Rotor inertia is 12.1 Lb-Ft Sq (0.51 Kg-meter Sq).

<b>Open Circuit A-C:</b>	0.601	<b>Short Circuit D-C:</b>	0.024
<b>Short Circuit A-C:</b>	0.035	<b>X/R Ratio:</b>	9.207
<b>Stator Slots:</b>	60	<b>Rotor Slots:</b>	50

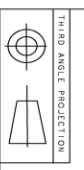
**Speed Torque Current Curve (First Connection, First Speed)**



Marks:



- NOTES:
1. CONDUIT BOX MAY BE PLACED WITH THE ENTRANCE DOWN, UP OR ON EITHER SIDE.
  2. ALL DIMENSIONS ARE IN INCHES. BRACKETED DIMENSIONS ARE METRIC (MILLIMETERS).
  3. TOLERANCE ON PERMISSIBLE SHAFT EXTENSION RUNOUT IS .002 T. I. R
  4. FOR W6 MOUNTING.



REVISION INFORMATION		REV.	DESCRIPTION	DATE	APPROVED
C	REVISED				

239C6200ACC 000

SIGNATURES	DATE	 <b>GE INDUSTRIAL MOTORS</b> a WOLONG company
MODEL	SHAHTH 06/18/2020	
REVISED	SHAHTH 06/18/2020	<b>OUTLINE</b> 364/365T TEFC XSD 841 SHAFT DOWN 346 CU. IN. CBOX. 0.002" TR. FR. GROUND
CHECKED	SAMOSH 06/18/2020	
DRAWN	SAMOSH 06/18/2020	239C6200ACC 000
DATE		
ISSUED	SHAHTH 06/18/2020	SCALE: 0.250
SIZE	C	REF. NO.: 239C620055A
SHEET	1 OF 1	

**Marks:**

**Connection Diagram**  
**GEM2034E-FIG7**



End shield Assembly		
Part Description	DE Side Part#	ODE Side Part#
End Shield	115E4253AH1	115E4250LM1
Bearing	235A2524AA01	235A2516AF01
Slinger/Inproseal	235A4575GS3	235A4575GS3

Fan & Fan Cover Assembly	
Part Description	Part#
Fan	159C7100AA1
Fan Cover	128D6811AA1

Conduit & Accessories Box Assembly	
Part Description	Part#
Conduit Box	149C4429AA2

Mechanical Accessories	
Part Description	Part#
Brake	
Tachometer	

