



GE INDUSTRIAL MOTORS
a **WOLONG** company

Product Technical Information

June 25, 2020

Data shown is for the current revision model #. Ensure your nameplate model # matches.

Model Number:	5KS364XAA249D2W8
Catalog Number:	M6631
Instruction Manual:	GEI-56128
Connection Diagram:	GEM2034E-FIG7
Outline Drawing:	239C6200RR

Accessory Connection Diagrams

Bearing Thermocouple:	None	Heater:	None
RTD:	None	Thermistor:	None
Thermostat:	None	Winding Thermocouple:	None
Bearing RTD:	None		

Table of Contents

Specification	01
Performance Characteristics	02
Outline Drawing	03
Connection Drawing(s)	04
Spare parts	05

Marks:

MODEL NUMBER:	5KS364XAA249D2W8	Estimated Weight:	970 Lbs
Outline Drawing:	239C6200RR	Time Rating:	CONT
Connection Diagram:	GEM2034E-FIG7	Enclosure:	TEFC
Instruction Book:	GEI-56128	Encl Construction:	661
Design Code:	36BD1188A	Ambient Max(°C):	40
Type:	KS	Alt Ambient Max(°C):	--
Frame:	364T	Insulation Class:	H
Phases:	3	NEMA Design:	B
Poles:	4	Nominal Efficiency:	95.0 %
Output Power:	60HP 44.4KW	Guaranteed Efficiency:	94.5 %
RPM:	1780	3/4 Load Efficiency:	95.2 %
Voltage:	460	KVA Code:	G
Hertz:	60	Max KVAR:	20.9
Amps - FL:	71.7	Power Factor:	82.5
Service Factor:	1.15	Bearing - DE:	NU 314
Alt Service Factor:	--	Bearing - ODE:	6314ZZC3

Enclosure is Totally Enclosed Fan-Cooled

Stamped Nameplate Notes:

API STD 661

ROLLER BEARING - FOR BELTED LOAD ONLY

DE BRG 70RU03J, ODE BRG 70BC03JPP3

IP 56

STAMP NP249A5564P051 AS BELOW:

MODEL:5KS364XAA249D2W8 S/N: XXX

CSA CERTIFIED CSA09.2216219 FOR EX NA IIC 200 C GC

CL 1 ZONE2 AEX NA IIC 200C;CL 1 DIV2 GRP ABCD 200C

IN -25C <= AMB <= 40C, 1.0 SF ON SINE-WAVE PWR

SURF TEMP 260C AT 1.15SF ON SINE-WAVE PWR

OR 200 C VT OR 230 C CT OR 200 C CHP PWM CONTROL

ALTERNATE RATING FOR PWM CONTROL 1.0SF 40C AMB

VT 0-60 HZ, CT 6-60 HZ, CHP 60-90 HZ.



Additional Information:

4P - T EXTN
PAINTED FRAME ID & SHAFT,
FAN COVER INSIDE & ODE E/S OUTSIDE
346 CU IN - 3.00" NPT
INPRO SEAL BOTH ENDS
OIL RESISTANT SLEEVING ON LEADS
.002" TIR SHAFT RUNOUT
ROUTINE TEST REPORT AND 5 POINT VIBRATION TEST
REPORT INCLUDED IN C/B
COPPER WASHER UNDER HEADS OF BEARING CAP BOLTS,
APPLY TITE-SEAL (A50CD427A) ON BEARING CAP SCREWS,
RABBETS AND PLUG THREADS.
B5F4C4 HIGH FATIGUE STEEL AISI 4142 SHAFT MATERIAL
GROUND PAD
VERTICAL MOUNT SHAFT UP



Performance Characteristics

1st Winding 1st Connection

Design: 36BD1188A

Marks:

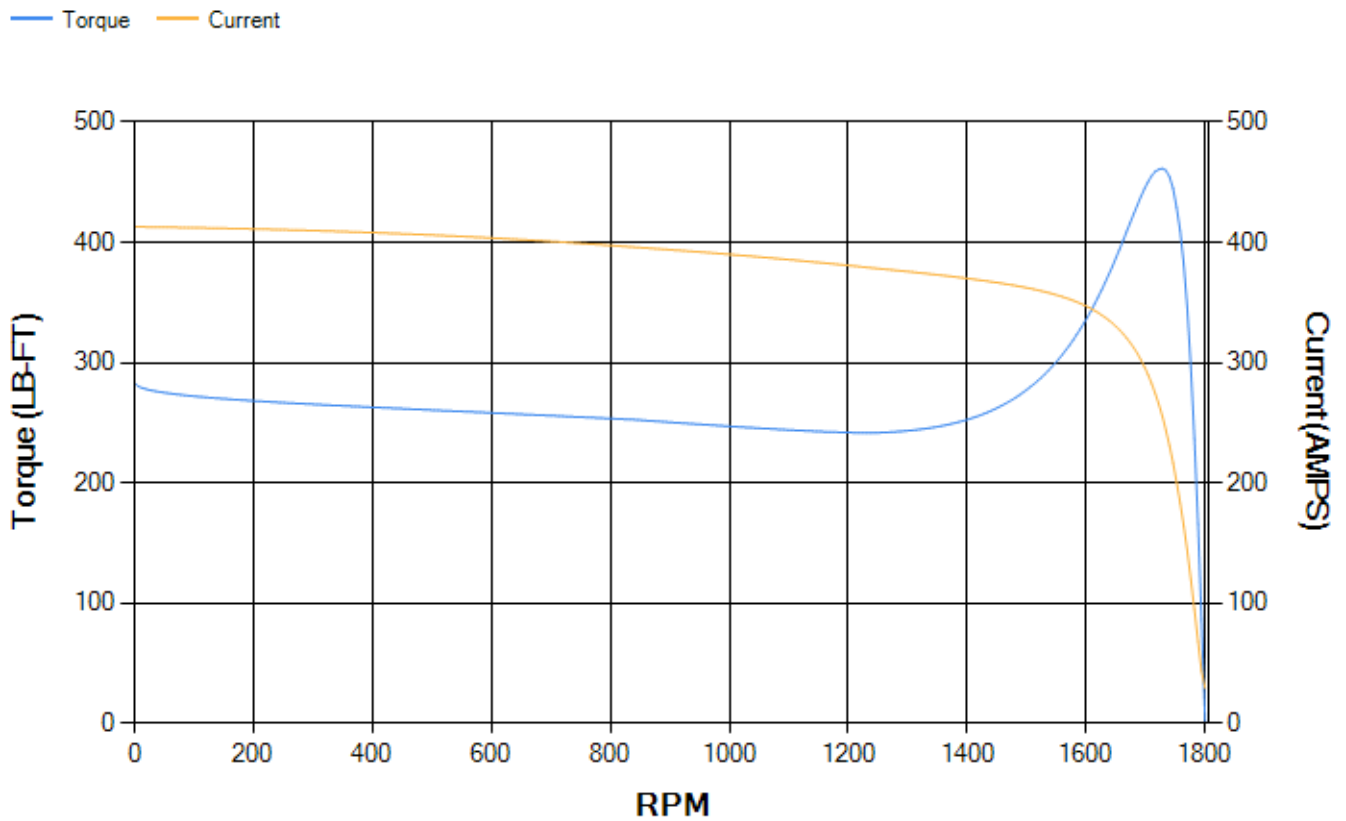
LOAD %	125.0	115.0	100.0	75.0	50.0	25.0	0.0
% EFF	94.37	94.62	95.12	95.18	94.85	92.37	0.00
% PF	84.32	83.76	82.36	77.74	67.51	44.89	3.18
AMPS	88.21	81.49	71.51	56.91	43.85	33.86	29.19

TORQ(FL)#FT	176.81	TORQ(LR)%FL	160.18	TORQ(BD)%FL	260.3
AMPS(LR)	412.91	PF AT START	0.31		

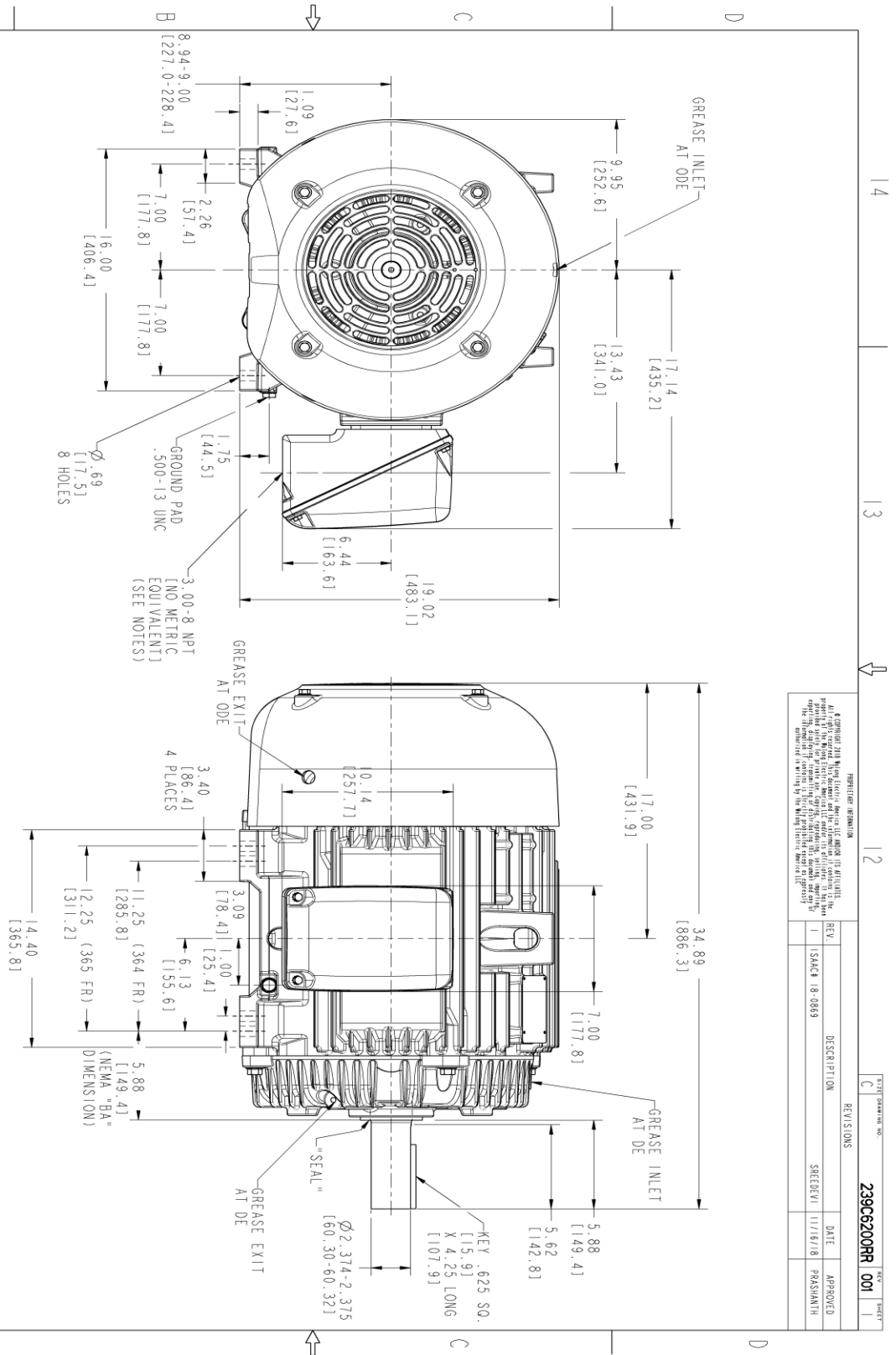
This motor is capable of two cold or one hot start with a maximum connected load inertia of 1190 Lb-Ft Sq (50.1 Kg-meter Sq)at 100% voltage, where the load torque varies with the square of the speed. Acceleration time with maximum inertia and the above load type is 33 seconds. Safe stall time at 100% voltage is 76 seconds cold, 39 seconds hot. Rotor inertia is 12.1 Lb-Ft Sq (0.51 Kg-meter Sq).

Open Circuit A-C:	0.601	Short Circuit D-C:	0.024
Short Circuit A-C:	0.035	X/R Ratio:	9.207
Stator Slots:	60	Rotor Slots:	50

Speed Torque Current Curve (First Connection, First Speed)



Marks:



- NOTES:
1. CONDUIT BOX MAY BE PLACED WITH THE ENTRANCE DOWN, UP OR ON EITHER SIDE.
 2. F-1 ASM AS SHOWN.
 3. F-2 ASM HAS CONDUIT BOX ON OPPOSITE SIDE.
 4. BRACKETED DIMENSIONS ARE METRIC (MILLIMETERS).
 5. TOLERANCE ON PERMISSIBLE SHAFT EXTENSION RUNOUT IS .002 T.I.R.

REGISTRATION INFORMATION

© Copyright 2018 by GE Industrial Motors, a GE company. All rights reserved. This drawing is the property of GE Industrial Motors, a GE company. It is to be used for the specific project and for the specific quantity only. It is not to be used for any other purpose without the written consent of GE Industrial Motors, a GE company. The information contained herein is confidential and its disclosure to third parties is prohibited.

REV.	DESCRIPTION	DATE	APPROVED
1	ISAC# 18-0869	11/16/18	PARSHANTH

REV: 001

239C6200RR 001

THIRD ANGLE PROJECTION

SIGNATURES	DATE
MODEL: P10SH 0720/15	
RETAIL: P10SH 0730/15	
CHECKED: ADINDAYAM 0730/15	
DWG#:	
W#:	
QUALITY:	
ISSUED: P10SH 0730/15	

GE INDUSTRIAL MOTORS
A WORLDWIDE COMPANY

OUTLINE

364/365 T TFC, XSD 841
346 CUL CONDUIT BOX, 0002 TR

239C6200RR

SCALE: 0.240 REF: W-239K5046

REV: 001

SHEET 1 OF 1

Marks:

Connection Diagram
GEM2034E-FIG7



End shield Assembly		
Part Description	DE Side Part#	ODE Side Part#
End Shield	115E4250AX1	115E4250LJ1
Bearing	235A2524AA01	235A2516AF01
Slinger/Inproseal	235A4575JG3	235A4575GS3

Fan & Fan Cover Assembly	
Part Description	Part#
Fan	159C7100AA1
Fan Cover	128D6810AA1

Conduit & Accessories Box Assembly	
Part Description	Part#
Conduit Box	149C4429AA2

Mechanical Accessories	
Part Description	Part#
Brake	
Tachometer	

