



**GE INDUSTRIAL MOTORS**  
a **WOLONG** company

# Product Technical Information

November 27, 2020

Data shown is for the current revision model #. Ensure your nameplate model # matches.

<b>Model Number:</b>	<b>5KS365XAA253D4W6</b>
<b>Catalog Number:</b>	<b>M6632</b>
<b>Instruction Manual:</b>	GEI-56128
<b>Connection Diagram:</b>	GEM2034E-FIG7
<b>Outline Drawing:</b>	239C6200ACC

## Accessory Connection Diagrams

<b>Bearing Thermocouple:</b>	None	<b>Heater:</b>	None
<b>RTD:</b>	None	<b>Thermistor:</b>	None
<b>Thermostat:</b>	None	<b>Winding Thermocouple:</b>	None
<b>Bearing RTD:</b>	None		

## Table of Contents

Specification	01
Performance Characteristics	02
Outline Drawing	03
Connection Drawing(s)	04
Spare parts	05

Marks:

<b>MODEL NUMBER:</b>	<b>5KS365XAA253D4W6</b>	<b>Estimated Weight:</b>	1020 Lbs
<b>Outline Drawing:</b>	239C6200ACC	<b>Time Rating:</b>	CONT
<b>Connection Diagram:</b>	GEM2034E-FIG7	<b>Enclosure:</b>	TEFC
<b>Instruction Book:</b>	GEI-56128	<b>Encl Construction:</b>	661
<b>Design Code:</b>	36BD1227A	<b>Ambient Max(°C):</b>	40
<b>Type:</b>	KS	<b>Alt Ambient Max(°C):</b>	--
<b>Frame:</b>	365T	<b>Insulation Class:</b>	H
<b>Phases:</b>	3	<b>NEMA Design:</b>	B
<b>Poles:</b>	4	<b>Nominal Efficiency:</b>	95.4 %
<b>Output Power:</b>	75HP 55.5KW	<b>Guaranteed Efficiency:</b>	95.0 %
<b>RPM:</b>	1785	<b>3/4 Load Efficiency:</b>	95.5 %
<b>Voltage:</b>	460	<b>KVA Code:</b>	G
<b>Hertz:</b>	60	<b>Max KVAR:</b>	26.6
<b>Amps - FL:</b>	89.2	<b>Power Factor:</b>	82.5
<b>Service Factor:</b>	1.15	<b>Bearing - DE:</b>	NU 314
<b>Alt Service Factor:</b>	--	<b>Bearing - ODE:</b>	6314ZZC3

Enclosure is Totally Enclosed Fan-Cooled

---

Stamped Nameplate Notes:

API STD 661

ROLLER BEARING - FOR BELTED LOAD ONLY

DE BRG 70RU03J, ODE BRG 70BC03JPP3

IP 56

STAMP NP249A5564P051 AS BELOW:

MODEL:5KS365XAA253D4W6 S/N: XXX

CSA CERTIFIED CSA09.2216219 FOR EX NA IIC 200 C GC

CL 1 ZONE2 AEX NA IIC 200C;CL 1 DIV2 GRP ABCD 200C

IN -25C <= AMB <= 40C, 1.0 SF ON SINE-WAVE PWR

SURF TEMP 260 C AT 1.15SF ON SINE-WAVE PWR

OR 200 C VT OR 230 C CT OR 200 C CHP PWM CONTROL

ALTERNATE RATING FOR PWM CONTROL 1.0SF 40C AMB

VT 0 - 60 HZ, CT 10 - 60 HZ, CHP 60 - 90 HZ.



**Additional Information:**

4P - T EXTN  
PAINTED FRAME ID & SHAFT,  
FAN COVER INSIDE & ODE E/S OUTSIDE  
C/BOX 346 CU IN - 3.00" NPT  
INPRO SEAL BOTH ENDS  
OIL RESISTANT SLEEVING ON LEADS  
.002" TIR SHAFT RUNOUT  
ROUTINE TEST REPORT AND 5 POINT VIBRATION TEST  
REPORT INCLUDED IN C/B  
COPPER WASHER UNDER HEADS OF BEARING CAP BOLTS,  
APPLY TITE-SEAL (A50CD427A) ON BEARING CAP SCREWS,  
RABBETS AND PLUG THREADS.  
B5F4C4 HIGH FATIGUE STEEL AISI 4142 SHAFT MATERIAL  
GROUND PAD  
VERTICAL MOUNT SHAFT DOWN WITH DRIP COVER



**Performance Characteristics**

1st Winding 1st Connection

**Design: 36BD1227A**

**Marks:**

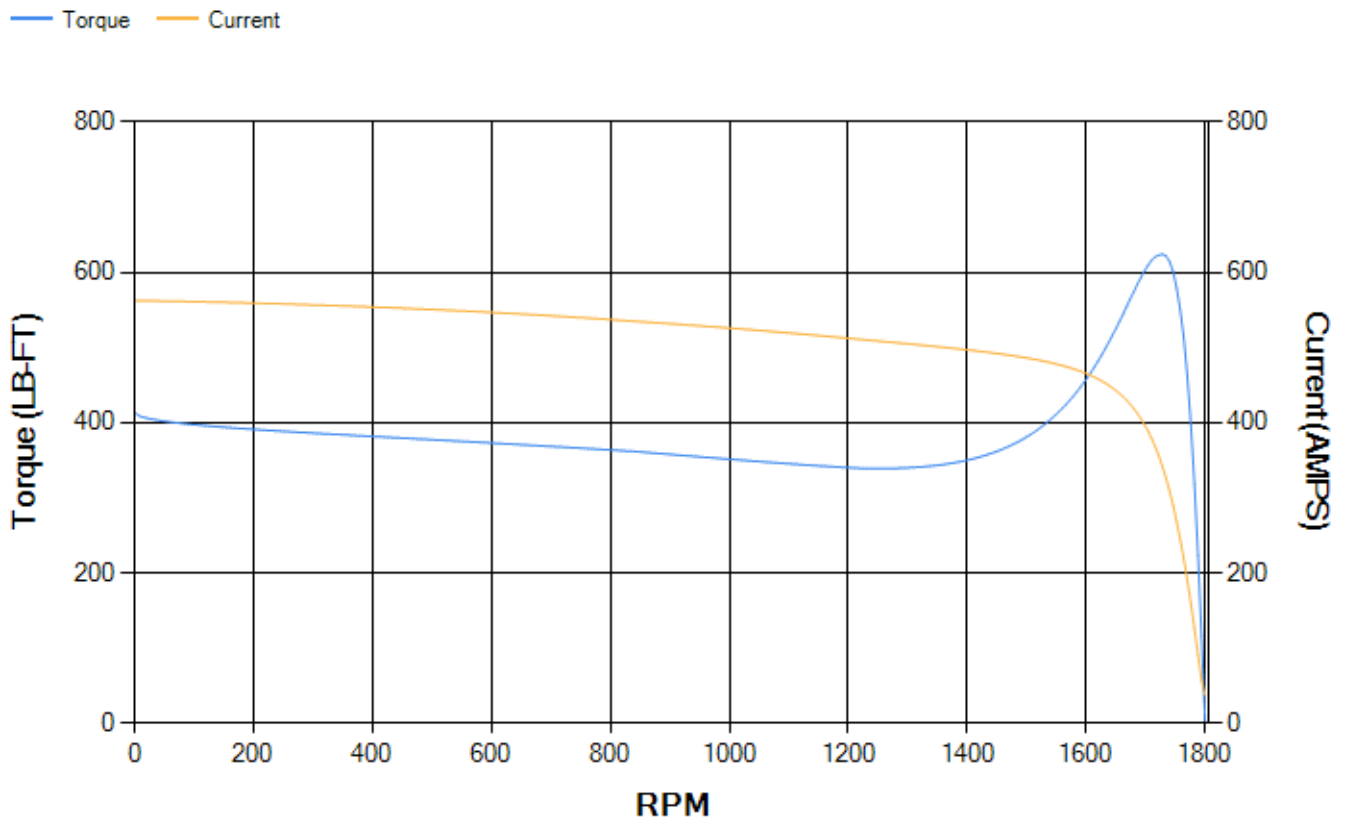
LOAD %	125.0	115.0	100.0	75.0	50.0	25.0	0.0
% EFF	94.85	95.06	95.52	95.53	95.19	92.82	0.00
% PF	84.6	83.94	82.4	77.53	67	44.19	2.93
AMPS	109.35	101.17	89	71.08	55.03	42.78	37.09

<b>TORQ(FL)#FT</b>	220.86	<b>TORQ(LR)%FL</b>	187.39	<b>TORQ(BD)%FL</b>	281.77
<b>AMPS(LR)</b>	562.56	<b>PF AT START</b>	0.32		

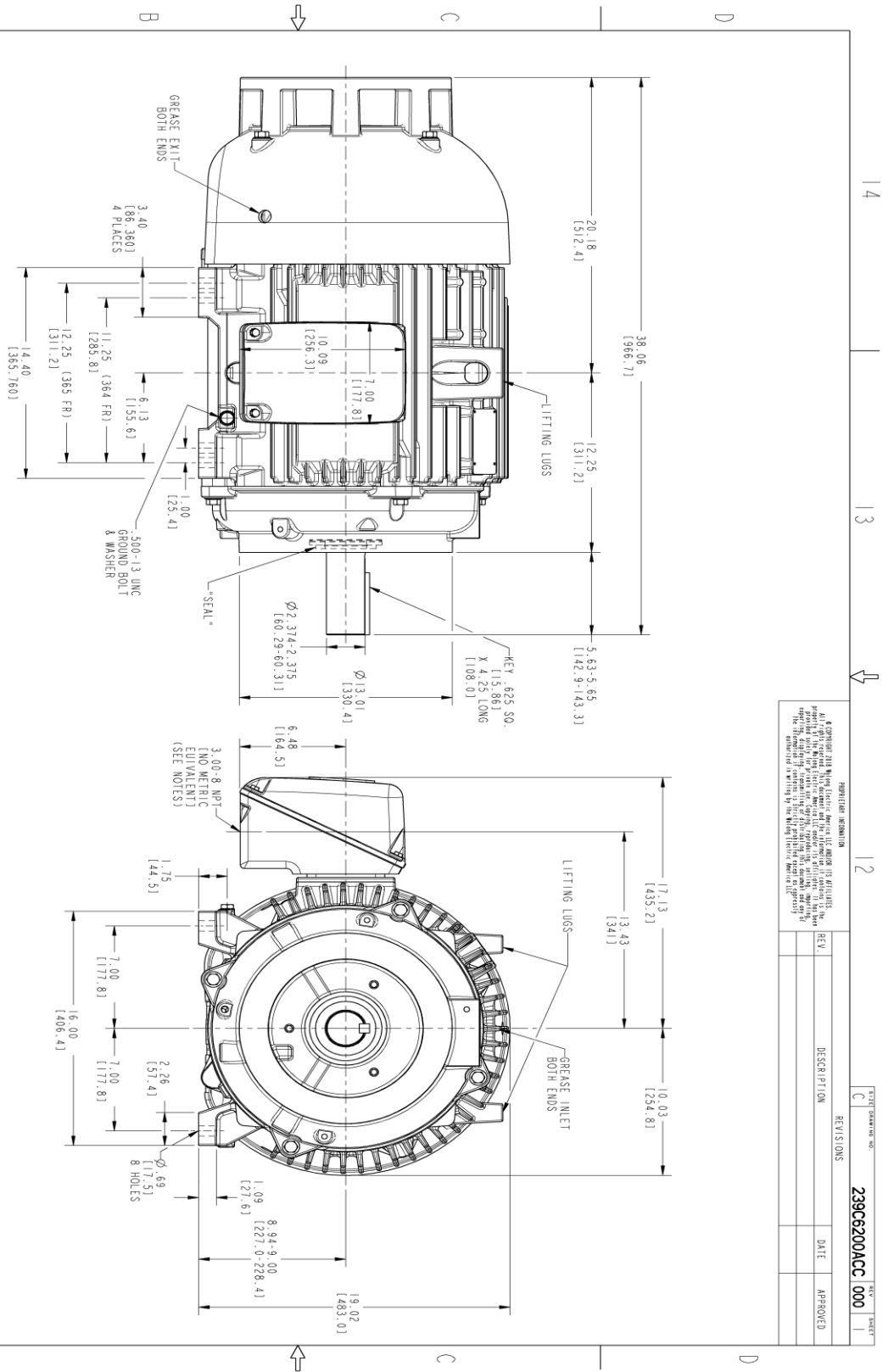
This motor is capable of two cold or one hot start with a maximum connected load inertia of 1432 Lb-Ft Sq (60.29 Kg-meter Sq)at 100% voltage, where the load torque varies with the square of the speed. Acceleration time with maximum inertia and the above load type is 27 seconds. Safe stall time at 100% voltage is 65 seconds cold, 32 seconds hot. Rotor inertia is 15.13 Lb-Ft Sq (0.64 Kg-meter Sq).

<b>Open Circuit A-C:</b>	0.625	<b>Short Circuit D-C:</b>	0.025
<b>Short Circuit A-C:</b>	0.034	<b>X/R Ratio:</b>	9.412
<b>Stator Slots:</b>	60	<b>Rotor Slots:</b>	50

**Speed Torque Current Curve (First Connection, First Speed)**



Marks:



- NOTES:
1. CONDUIT BOX MAY BE PLACED WITH THE ENTRANCE DOWN, UP OR ON EITHER SIDE.
  2. ALL DIMENSIONS ARE IN INCHES. BRACKETED DIMENSIONS ARE METRIC (MILLIMETERS).
  3. TOLERANCE ON PERMISSIBLE SHAFT EXTENSION RUNOUT IS .002 T. I. R
  4. FOR W6 MOUNTING.

PROHIBITION INFORMATION

© Copyright 2018 GE Industrial Motors. All rights reserved. No part of this document may be reproduced, stored in a retrieval system, or transmitted in any form or by any means, electronic, mechanical, photocopying, recording, or by any information storage and retrieval system, without the prior written permission of GE Industrial Motors. The information contained herein is the property of GE Industrial Motors and is confidential. It is to be used only for the purpose specified and is not to be distributed outside the organization.

REV.	DESCRIPTION	DATE	APPROVED

SIGNATURES	DATE	REV	DESCRIPTION	DATE	APPROVED
MODEL: BHARATH 06/18/2020					
REV: BHARATH 06/18/2020					
CHECKED: SAMOSH 06/18/2020					
DRAWN: SAMOSH 06/18/2020					
W6: SAMOSH 06/18/2020					
QUALITY: BHARATH 06/18/2020					
ISSUED: BHARATH 06/18/2020					
SOLD MODEL: 239C6200ACC					

GE INDUSTRIAL MOTORS  
A WOLONG COMPANY

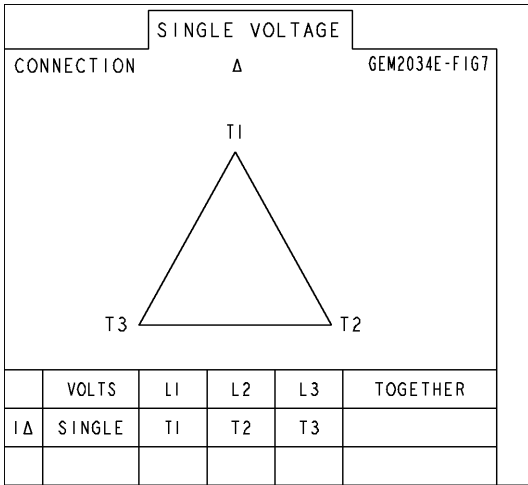
OUTLINE  
364/365T TEFC XSD 841 SHAFT DOWN  
346 CU. IN. CBOX, 0.002" TR. FR. GROUND

239C6200ACC  
REV

SCALE: 0.250 REF. NO: 239C620055A SHEET 1 OF 1

Marks:

**Connection Diagram**  
**GEM2034E-FIG7**



End shield Assembly		
Part Description	DE Side Part#	ODE Side Part#
End Shield	115E4253AH1	115E4250LM1
Bearing	235A2524AA01	235A2516AF01
Slinger/Inproseal	235A4575GS3	235A4575GS3

Fan & Fan Cover Assembly	
Part Description	Part#
Fan	159C7100AA1
Fan Cover	128D6811AA1

Conduit & Accessories Box Assembly	
Part Description	Part#
Conduit Box	149C4429AA2

Mechanical Accessories	
Part Description	Part#
Brake	
Tachometer	

