



GE INDUSTRIAL MOTORS
a **WOLONG** company

Product Technical Information

June 25, 2020

Data shown is for the current revision model #. Ensure your nameplate model # matches.

Model Number:	5KS365XAA254D4W8
Catalog Number:	M6633
Instruction Manual:	GEI-56128
Connection Diagram:	GEM2034E-FIG7
Outline Drawing:	239C6200RR

Accessory Connection Diagrams

Bearing Thermocouple:	None	Heater:	None
RTD:	None	Thermistor:	None
Thermostat:	None	Winding Thermocouple:	None
Bearing RTD:	None		

Table of Contents

Specification	01
Performance Characteristics	02
Outline Drawing	03
Connection Drawing(s)	04
Spare parts	05

Marks:

MODEL NUMBER: 5KS365XAA254D4W8
Outline Drawing: 239C6200RR
Connection Diagram: GEM2034E-FIG7
Instruction Book: GEI-56128
Design Code: 36BD1227A
Type: KS
Frame: 365T
Phases: 3
Poles: 4
Output Power: 75HP 55.5KW
RPM: 1785
Voltage: 460
Hertz: 60
Amps - FL: 89.2
Service Factor: 1.15
Alt Service Factor: --

Estimated Weight: 1020 Lbs
Time Rating: CONT
Enclosure: TEFC
Encl Construction: 661
Ambient Max(°C): 40
Alt Ambient Max(°C): --
Insulation Class: H
NEMA Design: B
Nominal Efficiency: 95.4 %
Guaranteed Efficiency: 95.0 %
3/4 Load Efficiency: 95.5 %
KVA Code: G
Max KVAR: 26.6
Power Factor: 82.5
Bearing - DE: NU 314
Bearing - ODE: 6314ZZC3

Enclosure is Totally Enclosed Fan-Cooled

Stamped Nameplate Notes:

API STD 661
 ROLLER BEARING - FOR BELTED LOAD ONLY
 DE BRG 70RU03J, ODE BRG 70BC03JPP3
 IP 56
 STAMP NP249A5564P051 AS BELOW:
 MODEL:5KS365XAA254D4W8 S/N: XXX
 CSA CERTIFIED CSA09.2216219 FOR EX NA IIC 200 C GC
 CL 1 ZONE2 AEX NA IIC 200C;CL 1 DIV2 GRP ABCD 200C
 IN -25C <= AMB <= 40C, 1.0 SF ON SINE-WAVE PWR
 SURF TEMP 260C AT 1.15SF ON SINE-WAVE PWR
 OR 200 C VT OR 230 C CT OR 200 C CHP PWM CONTROL
 ALTERNATE RATING FOR PWM CONTROL 1.0SF 40C AMB
 VT 0-60 HZ, CT 10-60 HZ, CHP 60-90 HZ.



Additional Information:

4P - T EXTN
PAINTED FRAME ID & SHAFT,
FAN COVER INSIDE & ODE E/S OUTSIDE
346 CU IN - 3.00" NPT
INPRO SEAL BOTH ENDS
OIL RESISTANT SLEEVING ON LEADS
.002" TIR SHAFT RUNOUT
ROUTINE TEST REPORT AND 5 POINT VIBRATION TEST
REPORT INCLUDED IN C/B
COPPER WASHER UNDER HEADS OF BEARING CAP BOLTS,
APPLY TITE-SEAL (A50CD427A) ON BEARING CAP SCREWS,
RABBETS AND PLUG THREADS.
B5F4C4 HIGH FATIGUE STEEL AISI 4142 SHAFT MATERIAL
GROUND PAD
VERTICAL MOUNT SHAFT UP



Performance Characteristics

1st Winding 1st Connection

Design: 36BD1227A

Marks:

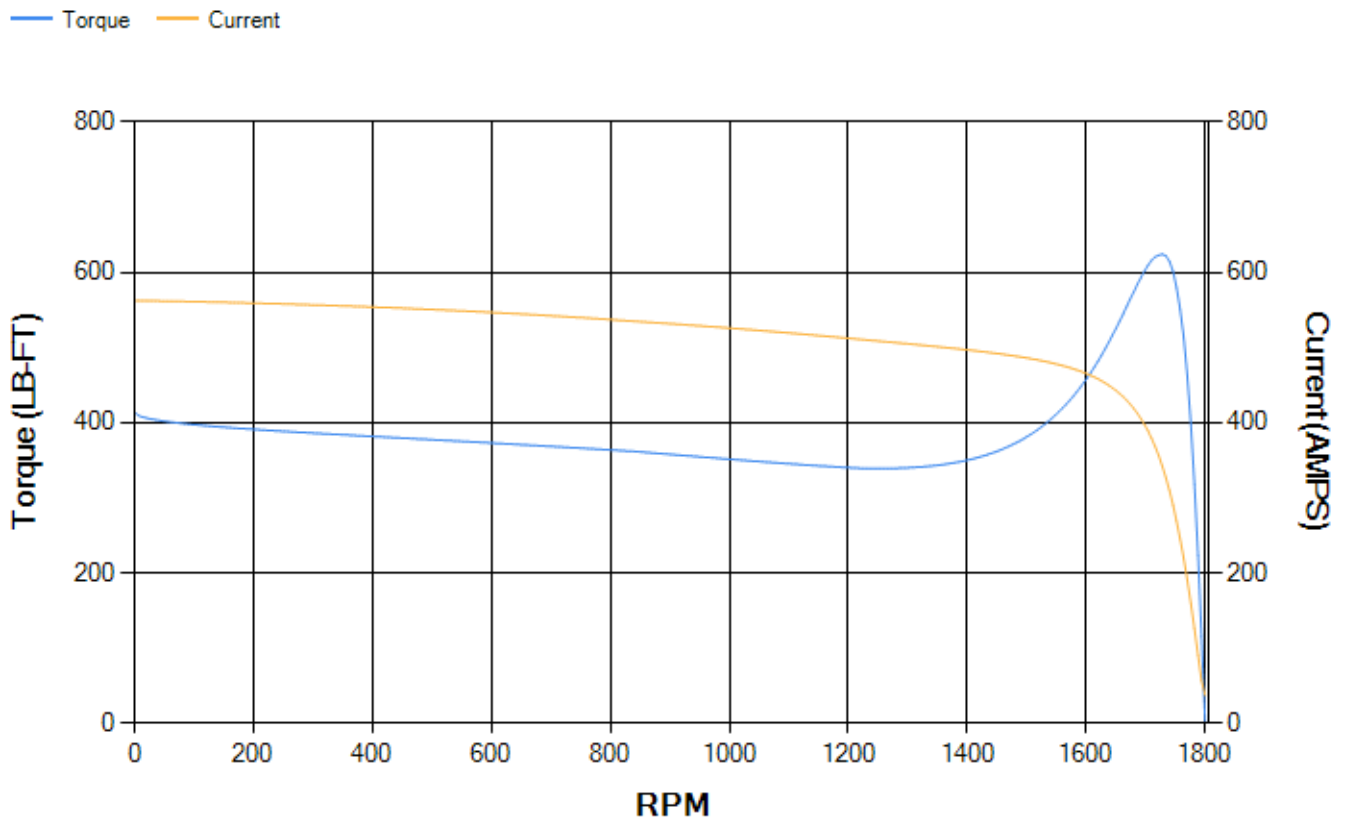
LOAD %	125.0	115.0	100.0	75.0	50.0	25.0	0.0
% EFF	94.85	95.06	95.52	95.53	95.19	92.82	0.00
% PF	84.6	83.94	82.4	77.53	67	44.19	2.93
AMPS	109.35	101.17	89	71.08	55.03	42.78	37.09

TORQ(FL)#FT	220.86	TORQ(LR)%FL	187.39	TORQ(BD)%FL	281.77
AMPS(LR)	562.56	PF AT START	0.32		

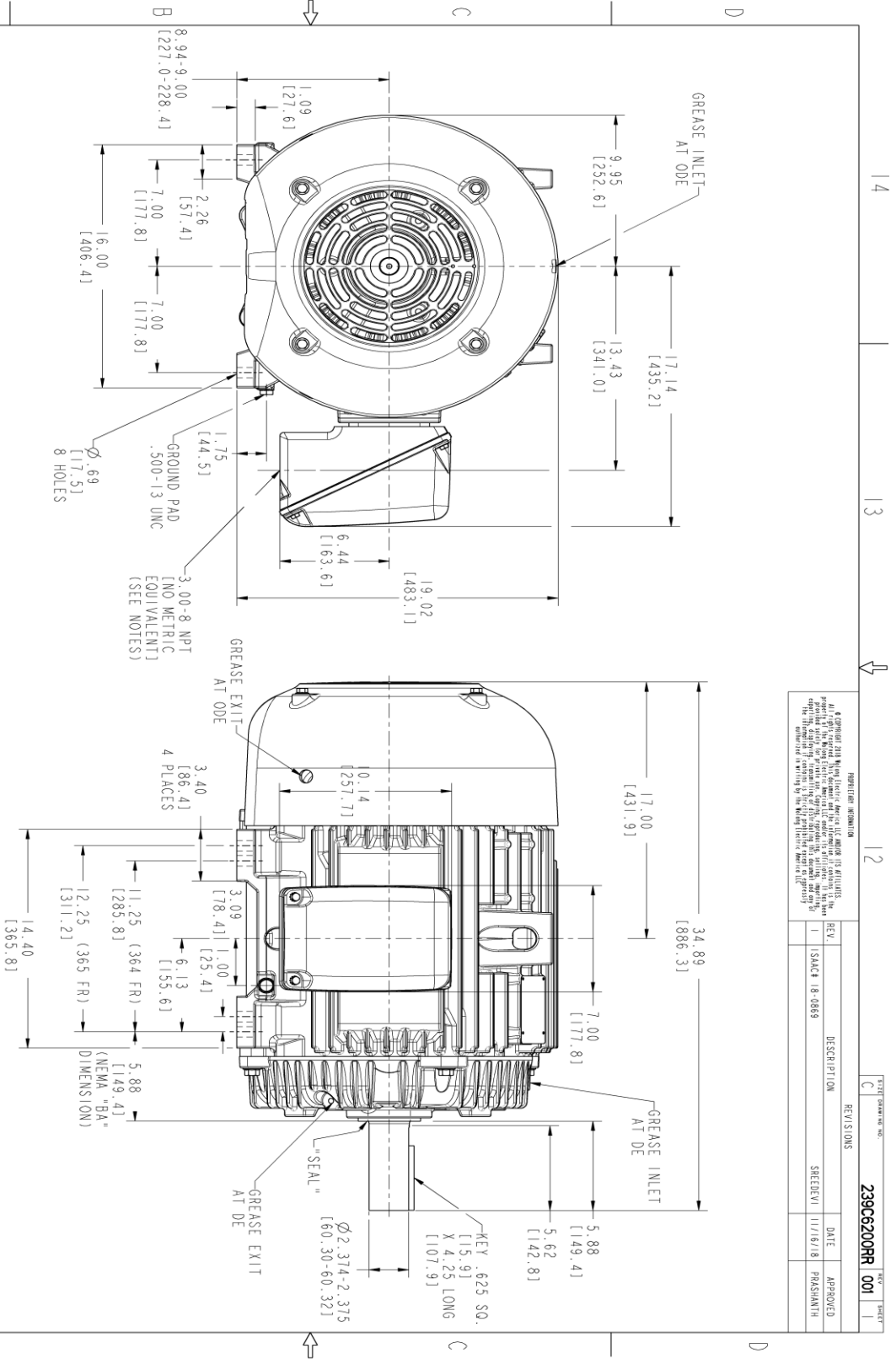
This motor is capable of two cold or one hot start with a maximum connected load inertia of 1432 Lb-Ft Sq (60.29 Kg-meter Sq)at 100% voltage, where the load torque varies with the square of the speed. Acceleration time with maximum inertia and the above load type is 27 seconds. Safe stall time at 100% voltage is 65 seconds cold, 32 seconds hot. Rotor inertia is 15.13 Lb-Ft Sq (0.64 Kg-meter Sq).

Open Circuit A-C:	0.625	Short Circuit D-C:	0.025
Short Circuit A-C:	0.034	X/R Ratio:	9.412
Stator Slots:	60	Rotor Slots:	50

Speed Torque Current Curve (First Connection, First Speed)



Marks:



PROHIBITION INFORMATION
 All GE products are designed and manufactured in the United States of America. GE does not warrant the performance of any product that is not designed and manufactured in the United States of America. The use of any product that is not designed and manufactured in the United States of America is at the user's own risk. GE is not responsible for any damage or injury resulting from the use of any product that is not designed and manufactured in the United States of America.

REV.	DESCRIPTION	DATE	APPROVED
1	ISAC# 18-0869	11/16/18	PARSHANTH

- NOTES:
1. CONDUIT BOX MAY BE PLACED WITH THE ENTRANCE DOWN, UP OR ON EITHER SIDE.
 2. F-1 ASM AS SHOWN.
 3. F-2 ASM HAS CONDUIT BOX ON OPPOSITE SIDE.
 4. BRACKETED DIMENSIONS ARE METRIC (MILLIMETERS).
 5. TOLERANCE ON PERMISSIBLE SHAFT EXTENSION RUNOUT IS .002 T.I.R.



THIRD ANGLE PROJECTION

SIGNATURES	DATE	TITLE
MODEL: P10SH 0720/15		
RETAIL: P10SH 0730/15		
CHECKED: ADINDAYAM 0730/15		
DWG#:		
W#:		
QUALITY:		
ISSUED: P10SH 0730/15		
SCALE: 0.240		
REF: W-239C6200RR		

GE INDUSTRIAL MOTORS
 a WOLONG company

OUTLINE
 364/365 T TFC, XSD 841
 346 CUL CONDUIT BOX, 0002 TR

239C6200RR

REV: 001
 SHEET 1 OF 1

Marks:

Connection Diagram
GEM2034E-FIG7



End shield Assembly		
Part Description	DE Side Part#	ODE Side Part#
End Shield	115E4250AX1	115E4250LJ1
Bearing	235A2524AA01	235A2516AF01
Slinger/Inproseal	235A4575JG3	235A4575GS3

Fan & Fan Cover Assembly	
Part Description	Part#
Fan	159C7100AA1
Fan Cover	128D6810AA1

Conduit & Accessories Box Assembly	
Part Description	Part#
Conduit Box	149C4429AA2

Mechanical Accessories	
Part Description	Part#
Brake	
Tachometer	

