



GE INDUSTRIAL MOTORS
a **WOLONG** company

Product Technical Information

June 25, 2020

Data shown is for the current revision model #. Ensure your nameplate model # matches.

Model Number:	5KS365XAA114D5
Catalog Number:	M8917
Instruction Manual:	GEI-56128
Connection Diagram:	GEM2034E-FIG7
Outline Drawing:	239C6200RD

Accessory Connection Diagrams

Bearing Thermocouple:	None	Heater:	None
RTD:	None	Thermistor:	None
Thermostat:	None	Winding Thermocouple:	None
Bearing RTD:	None		

Table of Contents

Specification	01
Performance Characteristics	02
Outline Drawing	03
Connection Drawing(s)	04
Spare parts	05

Marks:

MODEL NUMBER:	5KS365XAA114D5	Estimated Weight:	1030 Lbs
Outline Drawing:	239C6200RD	Time Rating:	CONT
Connection Diagram:	GEM2034E-FIG7	Enclosure:	TEFC
Instruction Book:	GEI-56128	Encl Construction:	841
Design Code:	36BD0118B	Ambient Max(°C):	40
Type:	KS	Alt Ambient Max(°C):	--
Frame:	365TS	Insulation Class:	H
Phases:	3	NEMA Design:	B
Poles:	2	Nominal Efficiency:	94.5 %
Output Power:	75HP 55.5KW	Guaranteed Efficiency:	94.1 %
RPM:	3575	3/4 Load Efficiency:	95.1 %
Voltage:	575	KVA Code:	G
Hertz:	60	Max KVAR:	20.2
Amps - FL:	68.3	Power Factor:	87.0
Service Factor:	1.15	Bearing - DE:	6314ZC3
Alt Service Factor:	--	Bearing - ODE:	6314ZC3

Enclosure is Totally Enclosed Fan-Cooled

Stamped Nameplate Notes:

IEEE-STD-841-2009

DE BRG 70BC03JP30, ODE BRG 70BC03JP30

STAMP NP249A5564P051 AS BELOW:

MODEL:5KS365XAA114D5 S/N: XXX

CSA CERTIFIED CSA09.2216219 FOR EX NA IIC 200 C GC

CL 1 ZONE2 AEX NA IIC 200C;CL 1 DIV2 GRP ABCD 200C

IN -25C <= AMB <= 40C, 1.0 SF ON SINE-WAVE PWR

SURF TEMP 215C AT 1.15SF ON SINE-WAVE PWR

OR 200 C VT OR 230 C CT OR --- C CHP PWM CONTROL

ALTERNATE RATING FOR PWM CONTROL 1.0SF 40C AMB

VT 0-60 HZ, CT 15-60 HZ, CHP --- HZ.



Additional Information:

2P - TS EXTN
PAINTED FRAME ID & SHAFT,
FAN COVER INSIDE & ODE E/S OUTSIDE
346 CU IN - 3.00" NPT
INPRO SEAL BOTH ENDS
OIL RESISTANT SLEEVING ON LEADS
.0015" TIR SHAFT RUNOUT
ROUTINE TEST REPORT AND 5 POINT VIBRATION TEST
REPORT INCLUDED IN C/B
COPPER WASHER UNDER HEADS OF BEARING CAP BOLTS,
APPLY TITE-SEAL (A50CD427A) ON BEARING CAP SCREWS,
RABBETS AND PLUG THREADS.
GROUND PAD
F1 MOUNTING



Performance Characteristics

1st Winding 1st Connection

Design: 36BD0118B

Marks:

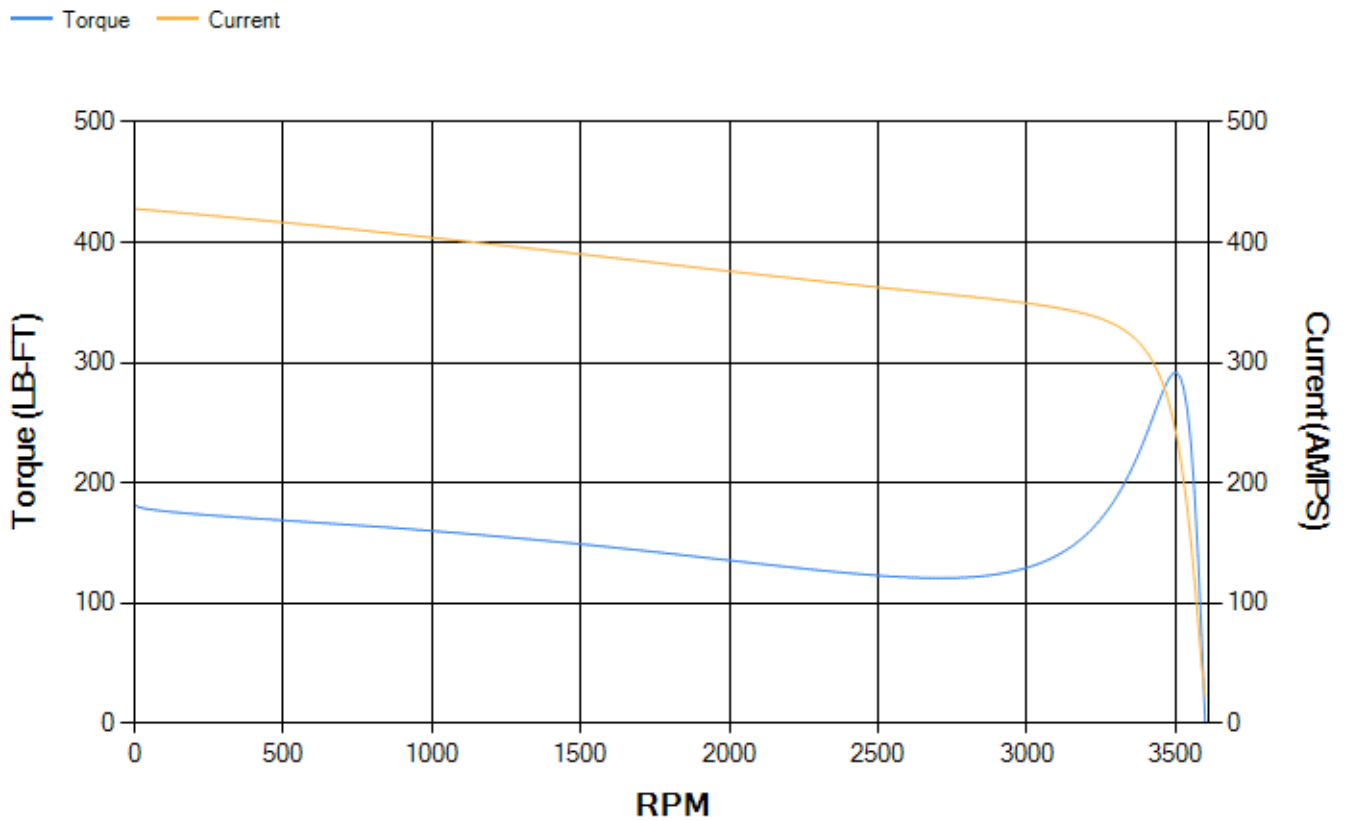
LOAD %	125.0	115.0	100.0	75.0	50.0	25.0	0.0
% EFF	94.39	94.61	95.07	95.05	94.58	91.8	0.00
% PF	87.95	87.7	86.89	83.76	75.78	54.45	4.59
AMPS	84.55	77.83	67.85	52.9	39.18	28.09	22.63

TORQ(FL)#FT	110.21	TORQ(LR)%FL	164.93	TORQ(BD)%FL	264.53
AMPS(LR)	428.01	PF AT START	0.33		

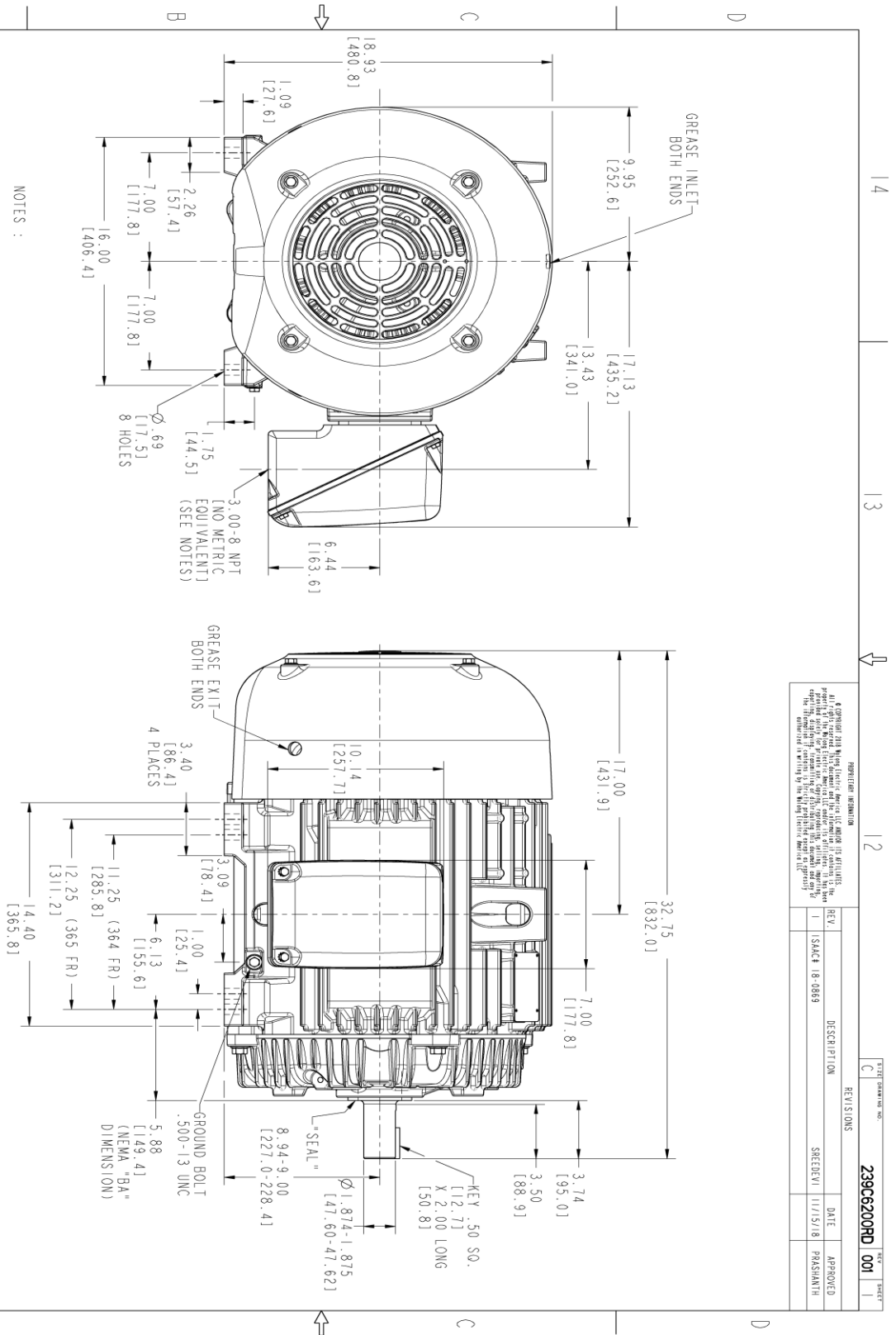
This motor is capable of two cold or one hot start with a maximum connected load inertia of 164 Lb-Ft Sq (6.9 Kg-meter Sq)at 100% voltage, where the load torque varies with the square of the speed. Acceleration time with maximum inertia and the above load type is 17 seconds. Safe stall time at 100% voltage is 41 seconds cold, 20 seconds hot. Rotor inertia is 8.98 Lb-Ft Sq (0.38 Kg-meter Sq).

Open Circuit A-C:	1.034	Short Circuit D-C:	0.022
Short Circuit A-C:	0.05	X/R Ratio:	8.467
Stator Slots:	48	Rotor Slots:	38

Speed Torque Current Curve (First Connection, First Speed)



Marks:



REVISIONS		DATE	APPROVED
REV.	DESCRIPTION	DATE	APPROVED
1	ISAC# 18-0869	11/15/18	PRAASHANTH

THIRD ANGLE PROJECTION

NOTES:

- CONDUIT BOX MAY BE PLACED WITH THE ENTRANCE DOWN, UP OR ON EITHER SIDE.
- F-1 ASM AS SHOWN.
- F-2 ASM HAS CONDUIT BOX ON OPPOSITE SIDE.
- BRACKETED DIMENSIONS ARE METRIC (MILLIMETERS).
- TOLERANCE ON PERMISSIBLE SHAFT EXTENSION RUNOUT IS .0015 T.I.R.

MODEL	TEJASNI	DATE
364/365 TS TECFC XSD 841	TEJASNI	06/19/15
346 CU IN. CONDUIT BOX	TEJASNI	06/19/15

GE INDUSTRIAL MOTORS
a WOLONG company

OUTLINE

364/365 TS TECFC XSD 841
346 CU IN. CONDUIT BOX

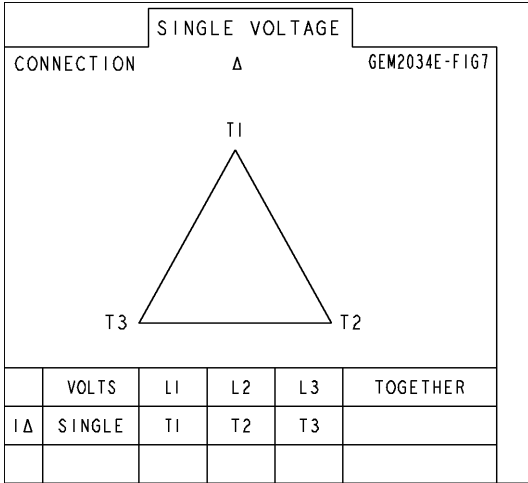
239C6200RD 001

SCALE: 0.250 REF. NO: 239C6200AH

SHEET 1 OF 1

Marks:

Connection Diagram
GEM2034E-FIG7



End shield Assembly		
Part Description	DE Side Part#	ODE Side Part#
End Shield	115E4250AA1	115E4250LK1
Bearing	235A2516AC01	235A2516AC01
Slinger/Inproseal	235A4575GS3	235A4575GS3

Fan & Fan Cover Assembly	
Part Description	Part#
Fan	159C6700G02
Fan Cover	128D6810AA1

Conduit & Accessories Box Assembly	
Part Description	Part#
Conduit Box	149C4429AA2

Mechanical Accessories	
Part Description	Part#
Brake	
Tachometer	

