



GE INDUSTRIAL MOTORS
a **WOLONG** company

Product Technical Information

October 23, 2020

Data shown is for the current revision model #. Ensure your nameplate model # matches.

Model Number:	5KS449XAA408D1
Catalog Number:	M8937
Instruction Manual:	GEI-56128
Connection Diagram:	GEM2034E-FIG7
Outline Drawing:	239C6800VW

Accessory Connection Diagrams

Bearing Thermocouple:	None	Heater:	None
RTD:	None	Thermistor:	None
Thermostat:	None	Winding Thermocouple:	None
Bearing RTD:	None		

Table of Contents

Specification	01
Performance Characteristics	02
Outline Drawing	03
Connection Drawing(s)	04
Spare parts	05

Marks:

MODEL NUMBER: 5KS449XAA408D1
Outline Drawing: 239C6800VW
Connection Diagram: GEM2034E-FIG7
Instruction Book: GEI-56128
Design Code: 49BD4025A
Type: KS
Frame: 449T
Phases: 3
Poles: 8
Output Power: 150HP 111KW
RPM: 890
Voltage: 460
Hertz: 60
Amps - FL: 187.0
Service Factor: 1.15
Alt Service Factor: --

Estimated Weight: 2660 Lbs
Time Rating: CONT
Enclosure: TEFC
Encl Construction: 841
Ambient Max(°C): 40
Alt Ambient Max(°C): --
Insulation Class: H
NEMA Design: B
Nominal Efficiency: 94.5 %
Guaranteed Efficiency: 94.1 %
3/4 Load Efficiency: --
KVA Code: G
Max KVAR: 53.1
Power Factor: 79.5
Bearing - DE: 6318ZC3
Bearing - ODE: 6318ZC3

Enclosure is Totally Enclosed Fan-Cooled

Stamped Nameplate Notes:

IEEE-STD-841-2009
 DE BRG 90BC03JP3, ODE BRG 90BC03JP3
 STAMP NP249A5564P051 AS BELOW:
 MODEL:5KS449XAA408D1 S/N: XXX
 CSA CERTIFIED CSA09.2216219 FOR EX NA IIC 200 C GC
 CL 1 ZONE2 AEX NA IIC 200C;CL 1 DIV2 GRP ABCD 200C
 IN -25C <= AMB <= 40C, 1.0 SF ON SINE-WAVE PWR
 SURF TEMP 280C AT 1.15SF ON SINE-WAVE PWR
 OR 215C VT OR 215C CT OR 215C CHP PWM CONTROL
 ALTERNATE RATING FOR PWM CONTROL 1.0SF 40C AMB
 VT 0 - 60 HZ, CT 45-60 HZ, CHP 60-90 HZ.



Additional Information:

8P - T EXTN
PAINTED FRAME ID & SHAFT,
FAN COVER INSIDE & ODE E/S OUTSIDE
C/BOX 700 CU IN - 3.00" NPT
INPRO SEAL BOTH ENDS
OIL RESISTANT SLEEVING ON LEADS
.0015" TIR SHAFT RUNOUT
ROUTINE TEST REPORT AND 5 POINT VIBRATION TEST
REPORT INCLUDED IN C/B
COPPER WASHER UNDER HEADS OF BEARING CAP BOLTS,
APPLY TITE-SEAL (A50CD427A) ON BEARING CAP SCREWS,
RABBETS AND PLUG THREADS.
GROUND PAD
F1 MOUNTING



Performance Characteristics

1st Winding 1st Connection

Design: 49BD4025A

Marks:

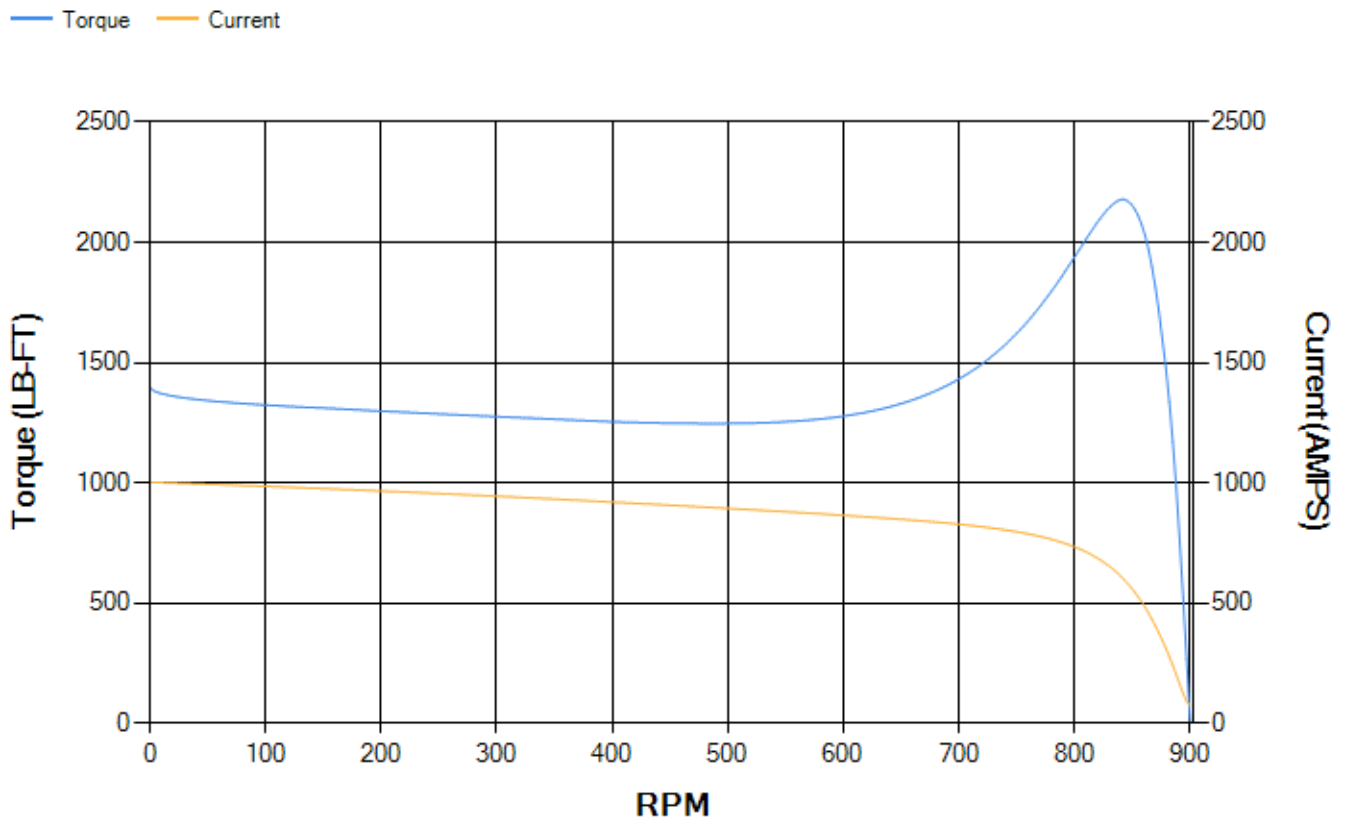
LOAD %	125.0	115.0	100.0	75.0	50.0	25.0	0.0
% EFF	94.08	94.42	95.05	95.3	95.19	93.19	0.00
% PF	80.96	80.7	79.7	75.61	65.85	43.81	2.84
AMPS	230.41	211.87	185.33	146.13	111.99	85.97	74.04

TORQ(FL)#FT 887.22 **TORQ(LR)%FL** 157.76 **TORQ(BD)%FL** 245.15
AMPS(LR) 1002.72 **PF AT START** 0.33

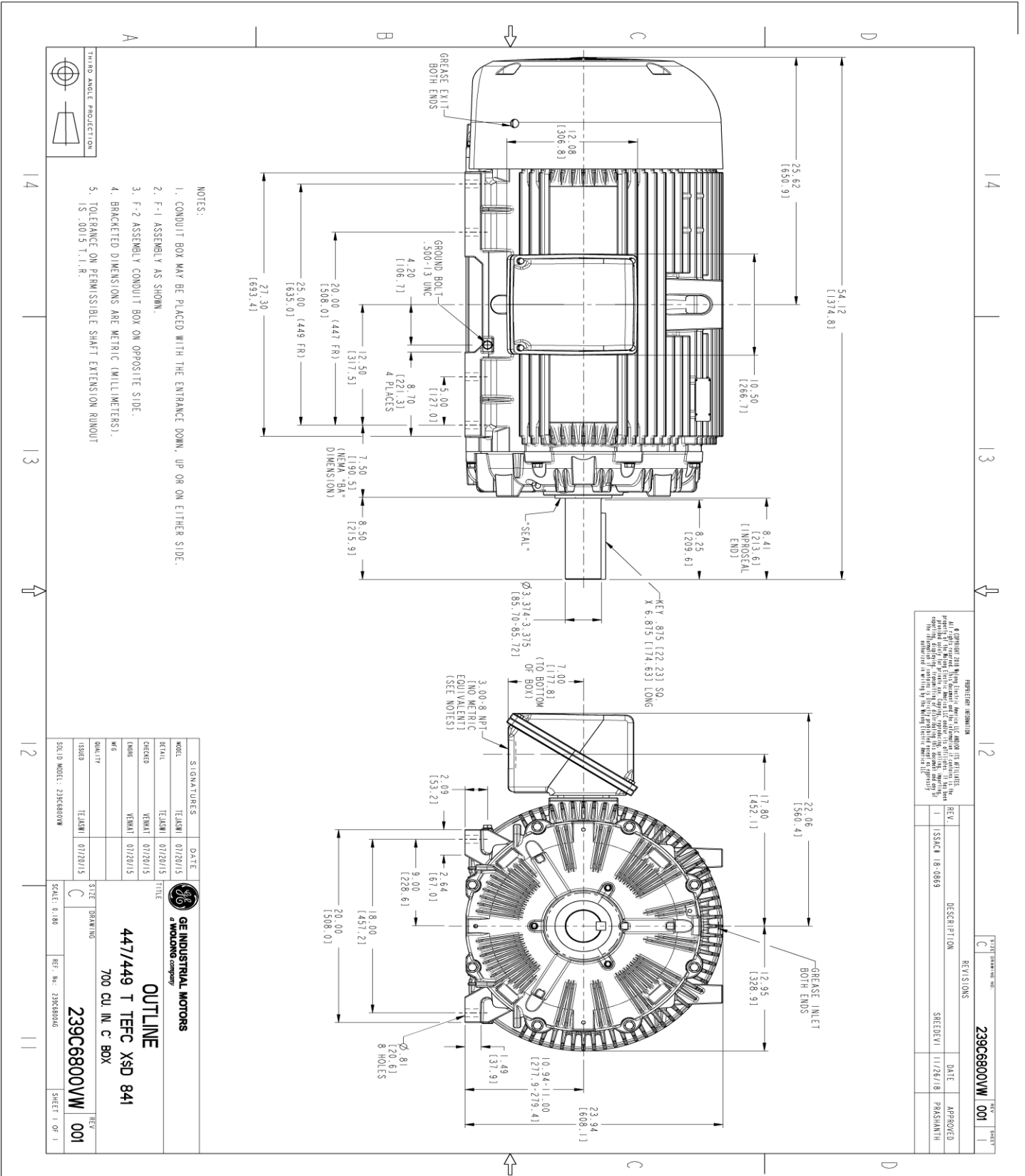
This motor is capable of two cold or one hot start with a maximum connected load inertia of 17460 Lb-Ft Sq (735.07 Kg-meter Sq)at 100% voltage, where the load torque varies with the square of the speed. Acceleration time with maximum inertia and the above load type is 46 seconds. Safe stall time at 100% voltage is 114 seconds cold, 56 seconds hot. Rotor inertia is 137.14 Lb-Ft Sq (5.77 Kg-meter Sq).

Open Circuit A-C: 0.467 **Short Circuit D-C:** 0.031
Short Circuit A-C: 0.031 **X/R Ratio:** 11.647
Stator Slots: 72 **Rotor Slots:** 58

Speed Torque Current Curve (First Connection, First Speed)



Marks:



- NOTES:
- CONDUIT BOX MAY BE PLACED WITH THE ENTRANCE DOWN, UP OR ON EITHER SIDE.
 - F-1 ASSEMBLY AS SHOWN.
 - F-2 ASSEMBLY CONDUIT BOX ON OPPOSITE SIDE.
 - BRACKETED DIMENSIONS ARE METRIC (MILLIMETERS).
 - TOLERANCE ON PERMISSIBLE SHAFT EXTENSION RUNOUT IS .0015 T.1.R.

REVISION INFORMATION

REV.	DESCRIPTION	DATE	APPROVED
1	ISSUE 18-0869	11/26/18	PARSHANTH

239C6800VW 001

SIGNATURES	DATE
DESIGNER: TEJASNI	01/22/15
CHECKED: VEENAT	01/20/15
DATE: 01/20/15	
ISSUED: TEJASNI	01/20/15

GE INDUSTRIAL MOTORS
A WOLONG COMPANY

OUTLINE
447/449 T TEFC XSD 841
700 CU. IN. C BOX

239C6800VW 001

SCALE: 0.180 REF. NO: 239C68006 SHEET 1 OF 1

Marks:

Connection Diagram
GEM2034E-FIG7



End shield Assembly		
Part Description	DE Side Part#	ODE Side Part#
End Shield	115E4355AA1	115E4355LM1
Bearing	235A2514AG01	235A2514AG01
Slinger/Inproseal	235A4575GS5	235A4575GS5

Fan & Fan Cover Assembly	
Part Description	Part#
Fan	159C7100G03
Fan Cover	128D6841AA1

Conduit & Accessories Box Assembly	
Part Description	Part#
Conduit Box	118D4408AD2

Mechanical Accessories	
Part Description	Part#
Brake	
Tachometer	

