



GE INDUSTRIAL MOTORS
a **WOLONG** company

Product Technical Information

June 25, 2020

Data shown is for the current revision model #. Ensure your nameplate model # matches.

Model Number:	5KS449XAA304C
Catalog Number:	M8941
Instruction Manual:	GEI-56128
Connection Diagram:	GEM2034E-FIG7
Outline Drawing:	239C6800VW

Accessory Connection Diagrams			
Bearing Thermocouple:	None	Heater:	None
RTD:	None	Thermistor:	None
Thermostat:	None	Winding Thermocouple:	None
Bearing RTD:	None		

Table of Contents

Specification	01
Performance Characteristics	02
Outline Drawing	03
Connection Drawing(s)	04
Spare parts	05

Marks:

MODEL NUMBER: 5KS449XAA304C
Outline Drawing: 239C6800VW
Connection Diagram: GEM2034E-FIG7
Instruction Book: GEI-56128
Design Code: 49BD3013B
Type: KS
Frame: 449T
Phases: 3
Poles: 6
Output Power: 200HP 148KW
RPM: 1190
Voltage: 575
Hertz: 60
Amps - FL: 182.0
Service Factor: 1.15
Alt Service Factor: --

Estimated Weight: 3060 Lbs
Time Rating: CONT
Enclosure: TEFC
Encl Construction: 841
Ambient Max(°C): 40
Alt Ambient Max(°C): --
Insulation Class: H
NEMA Design: B
Nominal Efficiency: 95.8 %
Guaranteed Efficiency: 95.4 %
3/4 Load Efficiency: --
KVA Code: G
Max KVAR: 49.2
Power Factor: 86.0
Bearing - DE: 6318ZC3
Bearing - ODE: 6318ZC3

Enclosure is Totally Enclosed Fan-Cooled

Stamped Nameplate Notes:

IEEE-STD-841-2009

DE BRG 90BC03JP3, ODE BRG 90BC03JP3

STAMP NP249A5564P051 AS BELOW:

MODEL:5KS449XAA304C S/N: XXX

CSA CERTIFIED CSA09.2216219 FOR EX NA IIC 200 C GC

CL 1 ZONE2 AEX NA IIC 200C;CL 1 DIV2 GRP ABCD 200C

IN -25C <= AMB <= 40C, 1.0 SF ON SINE-WAVE PWR

SURF TEMP 230C AT 1.15SF ON SINE-WAVE PWR

OR 200C VT OR 230C CT OR 200C CHP PWM CONTROL

ALTERNATE RATING FOR PWM CONTROL 1.0SF 40C AMB

VT 0 - 60 HZ, CT 20-60 HZ, CHP 60-90 HZ.



Additional Information:

6P - T EXTN
PAINTED FRAME ID & SHAFT,
FAN COVER INSIDE & ODE E/S OUTSIDE
700 CU IN - 3.00" NPT WITH DRAIN HOLES
INPRO SEAL BOTH ENDS
OIL RESISTANT SLEEVING ON LEADS
.0015" TIR SHAFT RUNOUT
ROUTINE TEST REPORT AND 5 POINT VIBRATION TEST
REPORT INCLUDED IN C/B
COPPER WASHER UNDER HEADS OF BEARING CAP BOLTS,
APPLY TITE-SEAL (A50CD427A) ON BEARING CAP SCREWS,
RABBETS AND PLUG THREADS.
GROUND PAD
F1 MOUNTING



Performance Characteristics

1st Winding 1st Connection

Design: 49BD3013B

Marks:

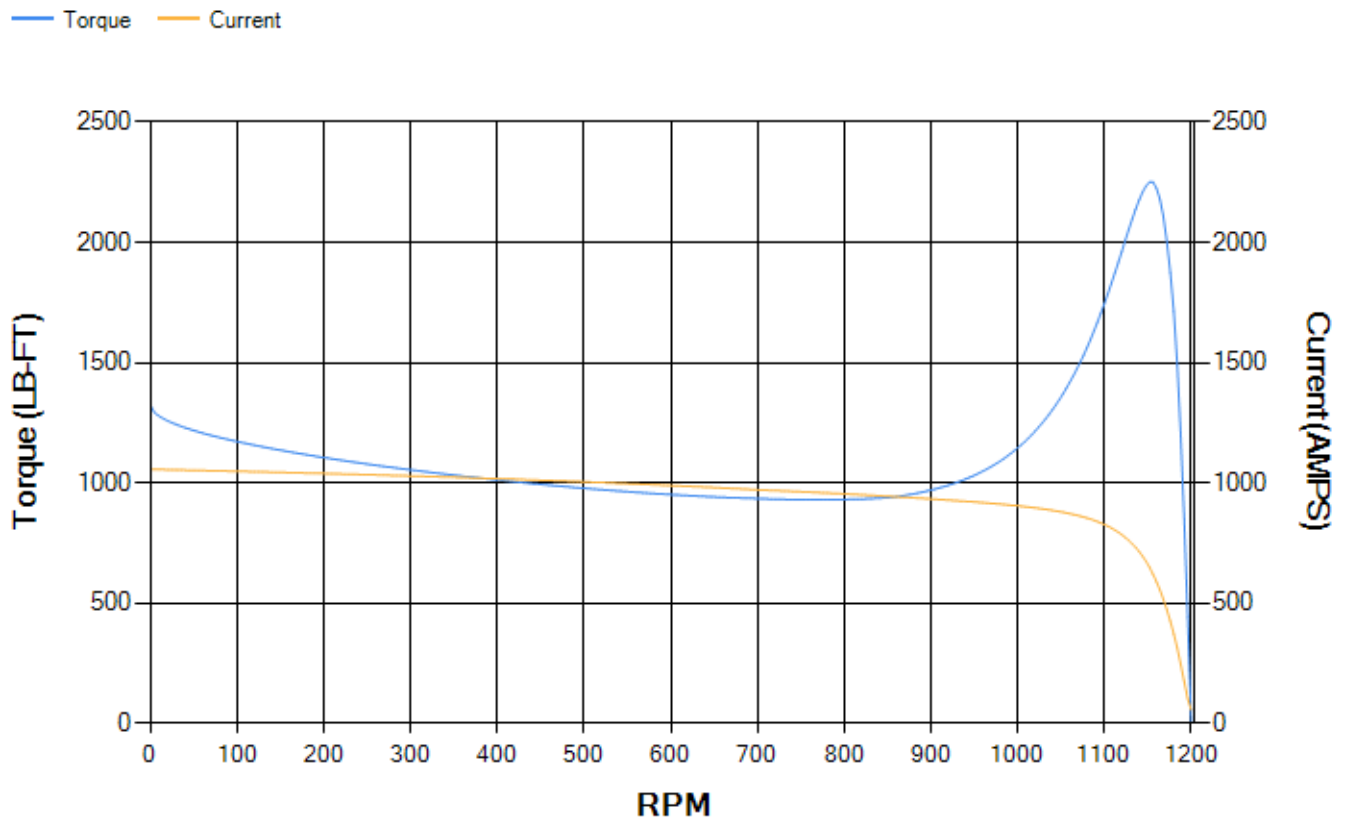
LOAD %	125.0	115.0	100.0	75.0	50.0	25.0	0.0
% EFF	94.93	95.21	95.77	95.97	95.9	94.24	0.00
% PF	86.48	86.49	86.08	83.66	76.65	56.28	3.44
AMPS	228.01	209.13	181.66	139.89	101.85	70.58	54.91

TORQ(FL)#FT	881.84	TORQ(LR)%FL	149.94	TORQ(BD)%FL	255.18
AMPS(LR)	1056.01	PF AT START	0.27		

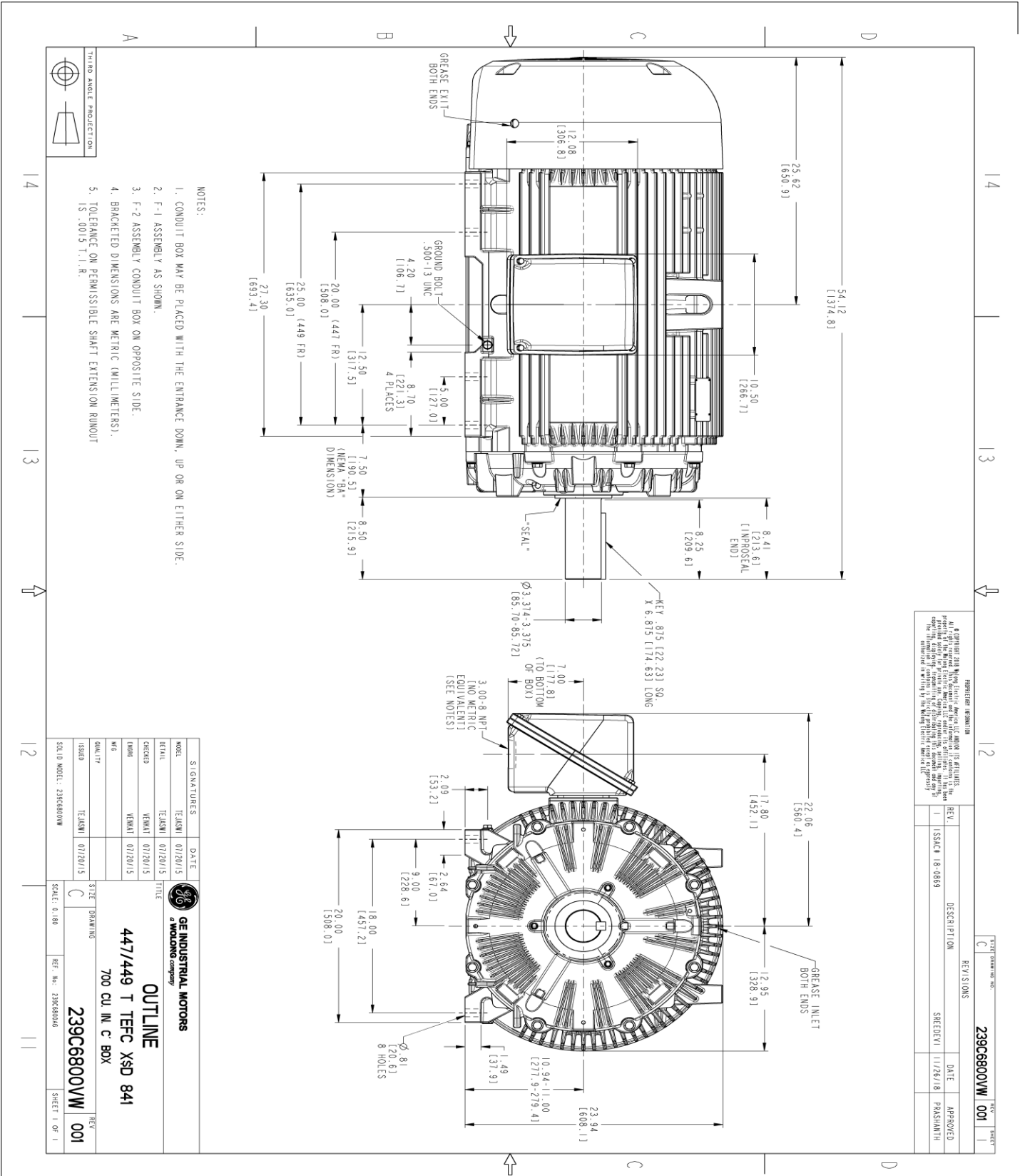
This motor is capable of two cold or one hot start with a maximum connected load inertia of 13695 Lb-Ft Sq (576.56 Kg-meter Sq)at 100% voltage, where the load torque varies with the square of the speed. Acceleration time with maximum inertia and the above load type is 65 seconds. Safe stall time at 100% voltage is 142 seconds cold, 78 seconds hot. Rotor inertia is 192.44 Lb-Ft Sq (8.1 Kg-meter Sq).

Open Circuit A-C:	1.132	Short Circuit D-C:	0.032
Short Circuit A-C:	0.054	X/R Ratio:	12.147
Stator Slots:	72	Rotor Slots:	58

Speed Torque Current Curve (First Connection, First Speed)



Marks:



- NOTES:
1. CONDUIT BOX MAY BE PLACED WITH THE ENTRANCE DOWN, UP OR ON EITHER SIDE.
 2. F-1 ASSEMBLY AS SHOWN.
 3. F-2 ASSEMBLY CONDUIT BOX ON OPPOSITE SIDE.
 4. BRACKETED DIMENSIONS ARE METRIC (MILLIMETERS).
 5. TOLERANCE ON PERMISSIBLE SHAFT EXTENSION RUNOUT IS .0015 T.1.R.

REVISION INFORMATION 1. REVISED TO ADD METRIC DIMENSIONS AND METRIC EQUIVALENTS TO THE DRAWING. 2. REVISED TO ADD METRIC DIMENSIONS AND METRIC EQUIVALENTS TO THE DRAWING. 3. REVISED TO ADD METRIC DIMENSIONS AND METRIC EQUIVALENTS TO THE DRAWING. 4. REVISED TO ADD METRIC DIMENSIONS AND METRIC EQUIVALENTS TO THE DRAWING. 5. REVISED TO ADD METRIC DIMENSIONS AND METRIC EQUIVALENTS TO THE DRAWING. 6. REVISED TO ADD METRIC DIMENSIONS AND METRIC EQUIVALENTS TO THE DRAWING. 7. REVISED TO ADD METRIC DIMENSIONS AND METRIC EQUIVALENTS TO THE DRAWING. 8. REVISED TO ADD METRIC DIMENSIONS AND METRIC EQUIVALENTS TO THE DRAWING. 9. REVISED TO ADD METRIC DIMENSIONS AND METRIC EQUIVALENTS TO THE DRAWING. 10. REVISED TO ADD METRIC DIMENSIONS AND METRIC EQUIVALENTS TO THE DRAWING.			
REV.	DESCRIPTION	DATE	APPROVED
1	ISSUE 18-0869	11/26/18	PARSHANTH
SHEET DRAWING NO. 239C6800WW 001		REV. NO. 001	

SIGNATURES		DATE	
DESIGNER	TEJASNI	01/22/15	
CHECKED	TEJASNI	01/20/15	
DESIGNED	VENKAT	01/20/15	
DATE	TEJASNI	01/20/15	
TITLE GE INDUSTRIAL MOTORS a WOLONG company		SCALE: 0.180	
OUTLINE 447/449 T TEFC XSD 841 700 CU. IN. C BOX		SHEET 1 OF 1	

Marks:

Connection Diagram
GEM2034E-FIG7



End shield Assembly		
Part Description	DE Side Part#	ODE Side Part#
End Shield	115E4355AA1	115E4355LM1
Bearing	235A2514AG01	235A2514AG01
Slinger/Inproseal	235A4575GS5	235A4575GS5

Fan & Fan Cover Assembly	
Part Description	Part#
Fan	159C7100G03
Fan Cover	128D6841AA1

Conduit & Accessories Box Assembly	
Part Description	Part#
Conduit Box	118D4408DG2

Mechanical Accessories	
Part Description	Part#
Brake	
Tachometer	

