



GE INDUSTRIAL MOTORS
a **WOLONG** company

Product Technical Information

October 23, 2020

Data shown is for the current revision model #. Ensure your nameplate model # matches.

Model Number:	5KS449XAA337D3
Catalog Number:	M8947
Instruction Manual:	GEI-56128
Connection Diagram:	GEM2034E-FIG8
Outline Drawing:	239C6800YS

Accessory Connection Diagrams

Bearing Thermocouple:	None	Heater:	None
RTD:	None	Thermistor:	None
Thermostat:	None	Winding Thermocouple:	None
Bearing RTD:	None		

Table of Contents

Specification	01
Performance Characteristics	02
Outline Drawing	03
Connection Drawing(s)	04
Spare parts	05

Marks:

MODEL NUMBER: 5KS449XAA337D3
Outline Drawing: 239C6800YS
Connection Diagram: GEM2034E-FIG8
Instruction Book: GEI-56128
Design Code: 49BD3064A
Type: KS
Frame: 449T
Phases: 3
Poles: 6
Output Power: 250HP 185KW
RPM: 1190
Voltage: 460
Hertz: 60
Amps - FL: 294.0
Service Factor: 1.15
Alt Service Factor: --

Estimated Weight: 3200 Lbs
Time Rating: CONT
Enclosure: TEFC
Encl Construction: 841
Ambient Max(°C): 40
Alt Ambient Max(°C): --
Insulation Class: H
NEMA Design: B
Nominal Efficiency: 95.8 %
Guaranteed Efficiency: 95.4 %
3/4 Load Efficiency: --
KVA Code: G
Max KVAR: 79.0
Power Factor: 83.0
Bearing - DE: 6318ZC3
Bearing - ODE: 6318ZC3

Enclosure is Totally Enclosed Fan-Cooled

Stamped Nameplate Notes:

IEEE-STD-841-2009
 FOR DIRECT COUPLED LOAD ONLY
 DE BRG 90BC03JP3, ODE BRG 90BC03JP3
 STAMP NP249A5564P051 AS BELOW:
 MODEL:5KS449XAA337D3 S/N: XXX
 CSA CERTIFIED CSA09.2216219 FOR EX NA IIC 200 C GC
 CL 1 ZONE2 AEX NA IIC 200C;CL 1 DIV2 GRP ABCD 200C
 IN -25C <= AMB <= 40C, 1.0 SF ON SINE-WAVE PWR
 SURF TEMP 260C AT 1.15SF ON SINE-WAVE PWR
 OR 200C VT OR 230C CT OR 200C CHP PWM CONTROL
 ALTERNATE RATING FOR PWM CONTROL 1.0SF 40C AMB
 VT 0-60 HZ, CT 45-60 HZ, CHP 60-90 HZ.



Additional Information:

6P - T EXTN - SPLIT LEAD
PAINTED FRAME ID & SHAFT,
FAN COVER INSIDE & ODE E/S OUTSIDE
C/BOX 1260 CU IN - 2(4.00" NPT)
C/B GRD PLATE
INPRO SEAL BOTH ENDS
OIL RESISTANT SLEEVING ON LEADS
.0015" TIR SHAFT RUNOUT
ROUTINE TEST REPORT AND 5 POINT VIBRATION TEST
REPORT INCLUDED IN C/B
COPPER WASHER UNDER HEADS OF BEARING CAP BOLTS,
APPLY TITE-SEAL (A50CD427A) ON BEARING CAP SCREWS,
RABBETS AND PLUG THREADS.
GROUND PAD
F1 MOUNTING



Performance Characteristics

1st Winding 1st Connection

Design: 49BD3064A

Marks:

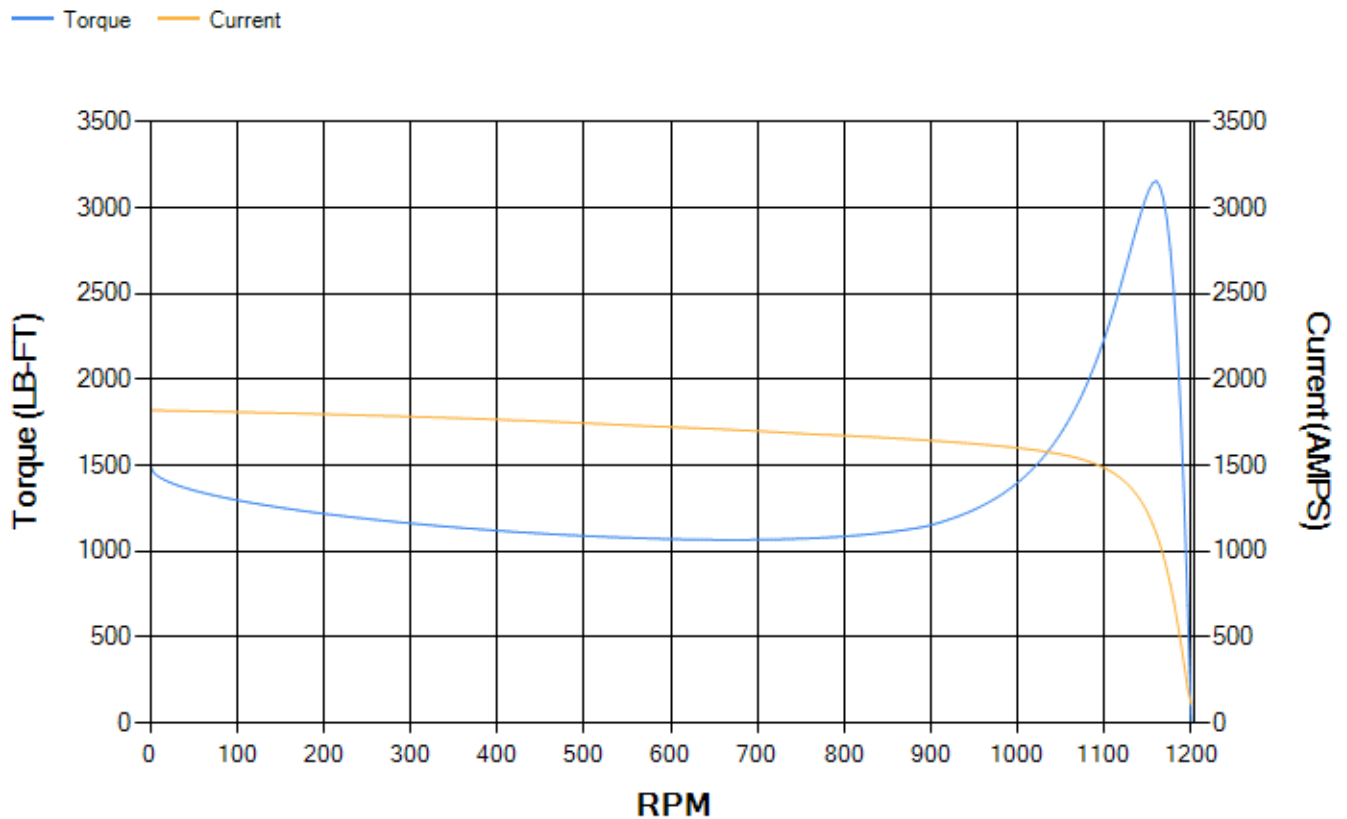
LOAD %	125.0	115.0	100.0	75.0	50.0	25.0	0.0
% EFF	95.34	95.58	96.07	96.16	96.01	94.26	0.00
% PF	84.56	84.18	83.09	79.14	69.77	47.46	2.68
AMPS	362.76	334.44	293.14	230.6	174.64	130.76	110.21

TORQ(FL)#FT	1100.76	TORQ(LR)%FL	135.84	TORQ(BD)%FL	286.42
AMPS(LR)	1822.27	PF AT START	0.23		

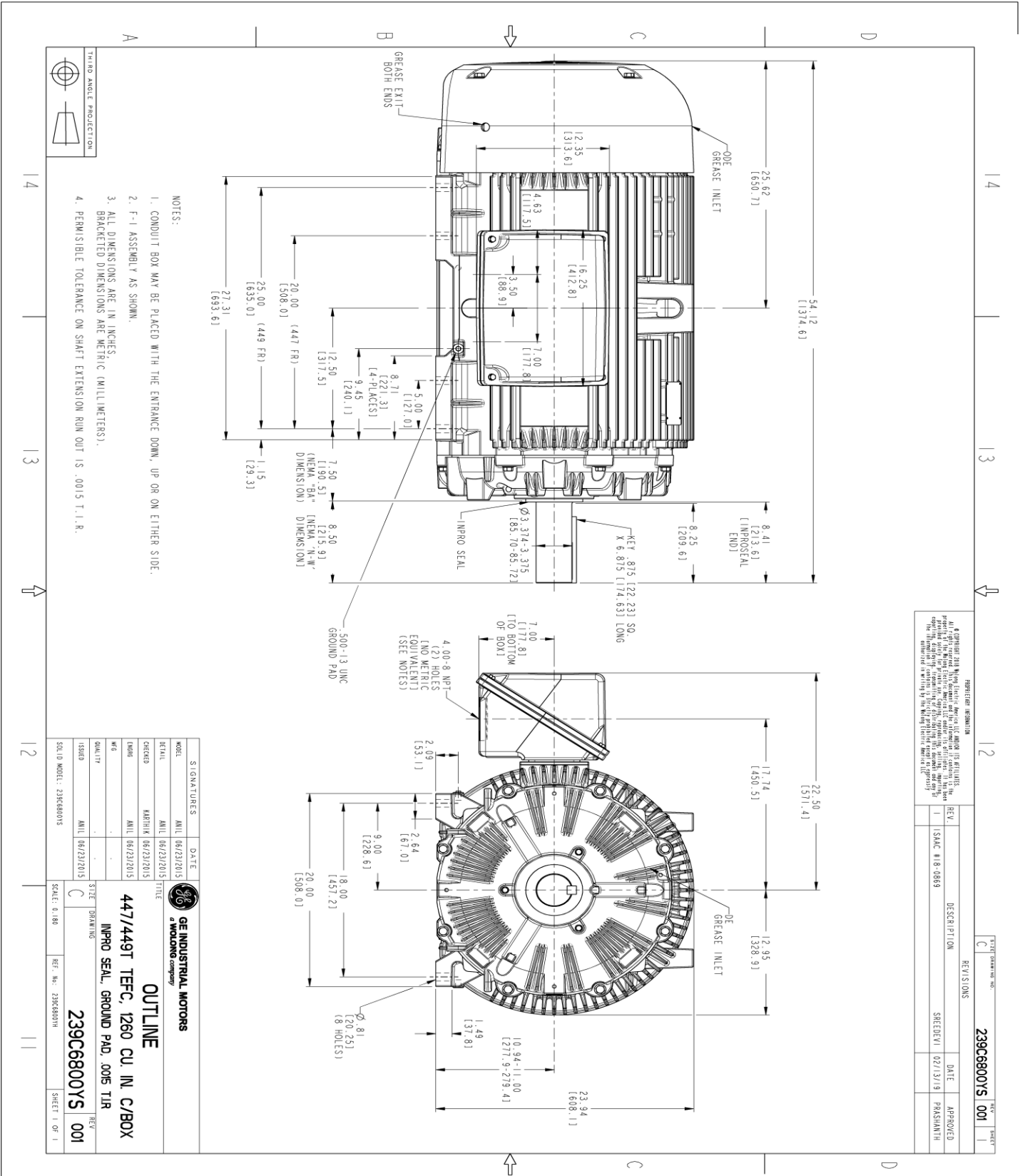
This motor is capable of two cold or one hot start with a maximum connected load inertia of 14702 Lb-Ft Sq (618.95 Kg-meter Sq)at 100% voltage, where the load torque varies with the square of the speed. Acceleration time with maximum inertia and the above load type is 61 seconds. Safe stall time at 100% voltage is 145 seconds cold, 73 seconds hot. Rotor inertia is 211.93 Lb-Ft Sq (8.92 Kg-meter Sq).

Open Circuit A-C:	1.072	Short Circuit D-C:	0.033
Short Circuit A-C:	0.06	X/R Ratio:	12.359
Stator Slots:	72	Rotor Slots:	58

Speed Torque Current Curve (First Connection, First Speed)



Marks:



PROPRIETARY INFORMATION
 All rights reserved. This document is the property of GE Industrial Motors. It contains confidential information and is intended for the use of the customer to whom it is issued. It is not to be distributed, copied, or used in any way without the written consent of GE Industrial Motors. The information contained herein is the property of GE Industrial Motors and is confidential.

REV.	DESCRIPTION	DATE	APPROVED
1	ISAC # 18-0869	02/13/19	PARSHANTH

DATE	REV. NO.	SCALE
06/23/2015	001	0.180

DATE	REV. NO.	SCALE
06/23/2015	001	0.180

NOTES:

1. CONDUIT BOX MAY BE PLACED WITH THE ENTRANCE DOWN, UP OR ON EITHER SIDE.
2. F-I ASSEMBLY AS SHOWN.
3. ALL DIMENSIONS ARE IN INCHES. BRACKETED DIMENSIONS ARE METRIC (MILLIMETERS).
4. PERMISSIBLE TOLERANCE ON SHAFT EXTENSION RUN OUT IS .0015 T.I.R.



MODEL	DATE	SIGNATURES
5KS449XAA337D3	06/23/2015	AMIL
447/449T TECFC, 1260 CU. IN. C/BOX	06/23/2015	AMIL

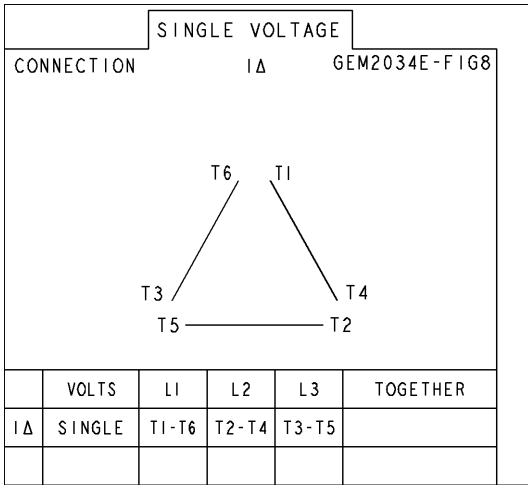
GE INDUSTRIAL MOTORS
 a WOLONG company
OUTLINE
 IMPRO SEAL, GROUND PAD, .005 TIR
239C6800YS
 001

ISSUES	DATE	BY	REV.
ISSUES	06/23/2015	AMIL	001

SCALE	REF. NO.	SHEET
0.180	239C6800YH	1 OF 1

Marks:

Connection Diagram
GEM2034E-FIG8



End shield Assembly		
Part Description	DE Side Part#	ODE Side Part#
End Shield	115E4355AA1	115E4355LM1
Bearing	235A2514AG01	235A2514AG01
Slinger/Inproseal	235A4575GS5	235A4575GS5

Fan & Fan Cover Assembly	
Part Description	Part#
Fan	159C7100G03
Fan Cover	128D6841AA1

Conduit & Accessories Box Assembly	
Part Description	Part#
Conduit Box	179B9058G03

Mechanical Accessories	
Part Description	Part#
Brake	
Tachometer	

