



GE INDUSTRIAL MOTORS
a **WOLONG** company

Product Technical Information

October 23, 2020

Data shown is for the current revision model #. Ensure your nameplate model # matches.

Model Number:	5KS449XAA134D6
Catalog Number:	M8948
Instruction Manual:	GEI-56128
Connection Diagram:	GEM2034E-FIG20
Outline Drawing:	239C6800ZC

Accessory Connection Diagrams

Bearing Thermocouple:	None	Heater:	None
RTD:	None	Thermistor:	None
Thermostat:	None	Winding Thermocouple:	None
Bearing RTD:	None		

Table of Contents

Specification	01
Performance Characteristics	02
Outline Drawing	03
Connection Drawing(s)	04
Spare parts	05

Marks:

MODEL NUMBER:	5KS449XAA134D6	Estimated Weight:	2820 Lbs
Outline Drawing:	239C6800ZC	Time Rating:	CONT
Connection Diagram:	GEM2034E-FIG20	Enclosure:	TEFC
Instruction Book:	GEI-56128	Encl Construction:	841
Design Code:	49BD0194A	Ambient Max(°C):	40
Type:	KS	Alt Ambient Max(°C):	--
Frame:	449TS	Insulation Class:	H
Phases:	3	NEMA Design:	B
Poles:	2	Nominal Efficiency:	95.8 %
Output Power:	300HP 222KW	Guaranteed Efficiency:	95.4 %
RPM:	3580	3/4 Load Efficiency:	--
Voltage:	460	KVA Code:	G
Hertz:	60	Max KVAR:	46.8
Amps - FL:	317.0	Power Factor:	92.5
Service Factor:	1.00	Bearing - DE:	6314ZC3
Alt Service Factor:	--	Bearing - ODE:	6314ZC3

Enclosure is Totally Enclosed Fan-Cooled

Stamped Nameplate Notes:

FOR DIRECT COUPLED LOAD ONLY
 DE BRG 70BC03JP30, ODE BRG 70BC03JP30
 ROT CCW FACING ODE LEAD/PH SEQ 3-2-1/1-2-3
 STAMP NP249A5564P051 AS BELOW:
 MODEL:5KS449XAA134D6 S/N: XXX
 CSA CERTIFIED CSA09.2216219 FOR EX NA IIC 200 C GC
 CL 1 ZONE2 AEX NA IIC 200C;CL 1 DIV2 GRP ABCD 200C
 IN -25C <= AMB <= 40C, 1.0 SF ON SINE-WAVE PWR
 SURF TEMP ---C AT ---SF ON SINE-WAVE PWR
 OR ---C VT OR ---C CT OR ---C CHP PWM CONTROL
 ALTERNATE RATING FOR PWM CONTROL 1.0SF 40C AMB
 VT --- HZ, CT --- HZ, CHP --- HZ.
 EXCEPTIONS TO IEEE-STD-841-2009:
 SOUND POWER 94 DBA; WINDING RISE 84 C



Additional Information:

2P - TS EXTN - SPLIT LEAD
PAINTED FRAME ID & SHAFT,
FAN COVER INSIDE & ODE E/S OUTSIDE
C/BOX 1260 CU IN - 2(4.00" NPT)
C/B GRD PLATE
INPRO SEAL BOTH ENDS
OIL RESISTANT SLEEVING ON LEADS
.0015" TIR SHAFT RUNOUT
ROUTINE TEST REPORT AND 5 POINT VIBRATION TEST
REPORT INCLUDED IN C/B
COPPER WASHER UNDER HEADS OF BEARING CAP BOLTS,
APPLY TITE-SEAL (A50CD427A) ON BEARING CAP SCREWS,
RABBETS AND PLUG THREADS.
GROUND PAD
F1 MOUNTING



Performance Characteristics

1st Winding 1st Connection

Design: 49BD0194A

Marks:

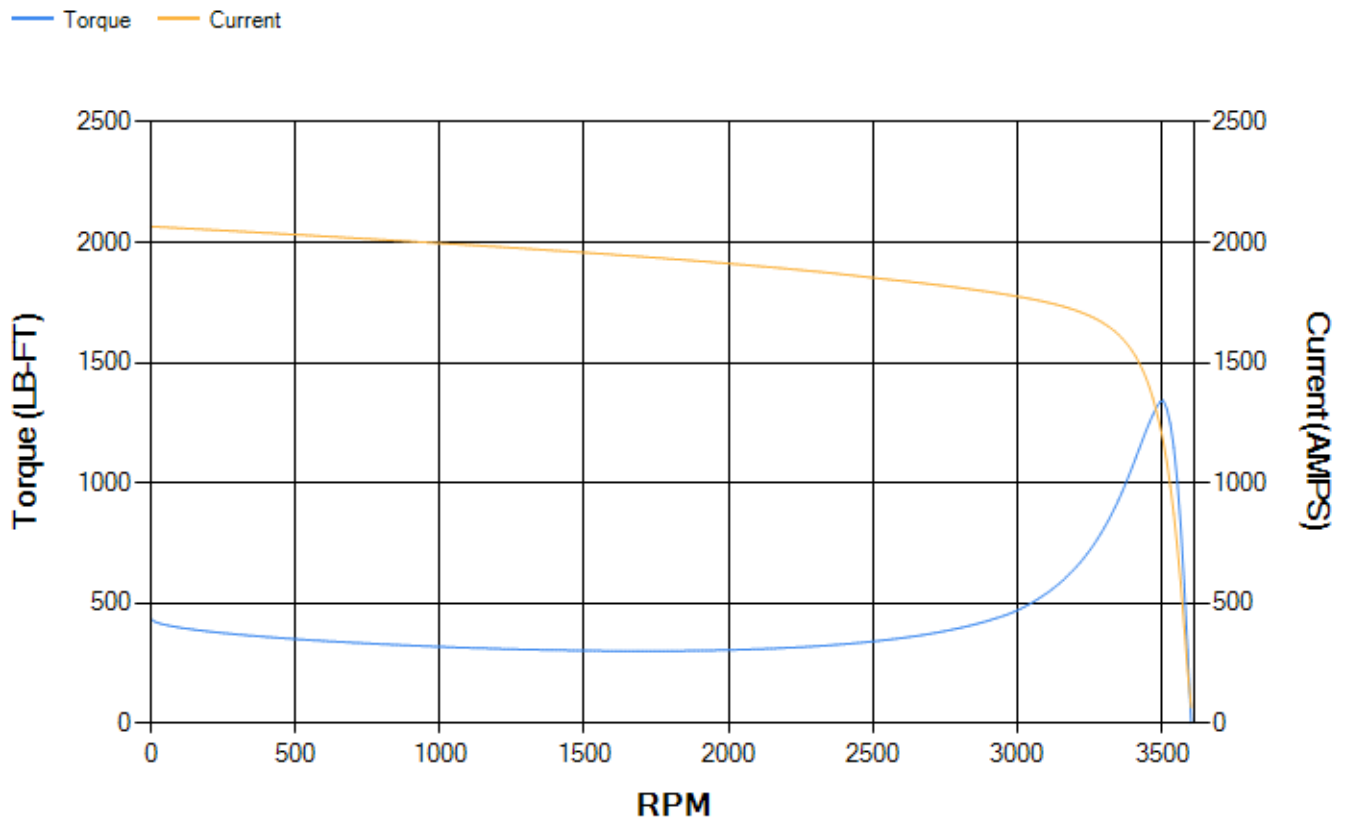
LOAD %	125.0	115.0	100.0	75.0	50.0	25.0	0.0
% EFF	95.53	95.74	96.22	96.31	96.17	94.51	0.00
% PF	92.21	92.36	92.34	91.38	87.64	72.89	5.24
AMPS	398.46	365.17	315.98	239.29	166.56	101.89	65.26

TORQ(FL)#FT	440.19	TORQ(LR)%FL	99.02	TORQ(BD)%FL	304.91
AMPS(LR)	2066.21	PF AT START	0.18		

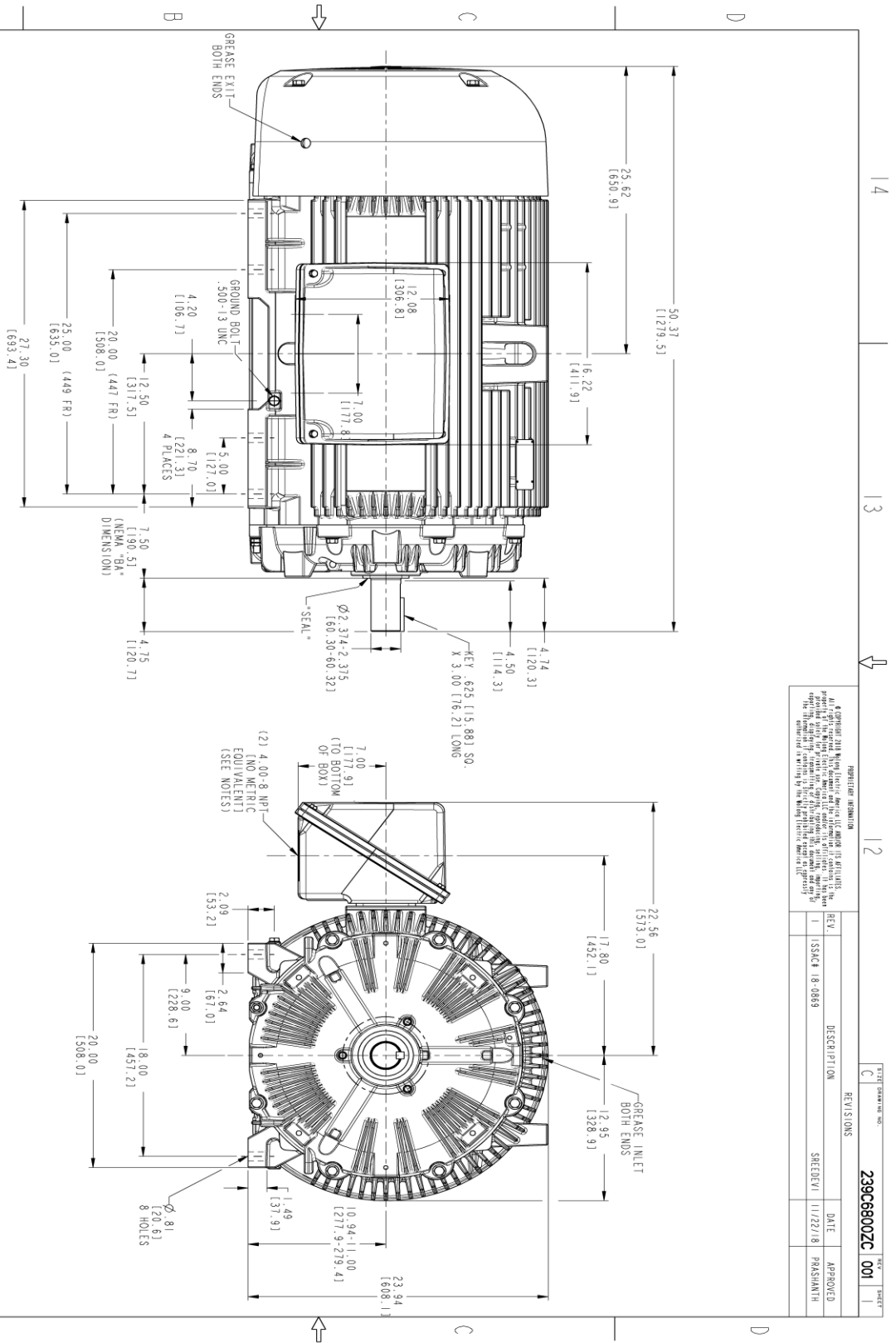
This motor is capable of two cold or one hot start with a maximum connected load inertia of 650 Lb-Ft Sq (27.36 Kg-meter Sq)at 100% voltage, where the load torque varies with the square of the speed. Acceleration time with maximum inertia and the above load type is 30 seconds. Safe stall time at 100% voltage is 83 seconds cold, 36 seconds hot. Rotor inertia is 50.39 Lb-Ft Sq (2.12 Kg-meter Sq).

Open Circuit A-C:	2.129	Short Circuit D-C:	0.035
Short Circuit A-C:	0.07	X/R Ratio:	13.314
Stator Slots:	48	Rotor Slots:	38

Speed Torque Current Curve (First Connection, First Speed)



Marks:



REVISION INFORMATION

REV.	DESCRIPTION	DATE	APPROVED
1	ISSAC 18-0869	11/22/18	PRASHANTH

239C6800ZC 001

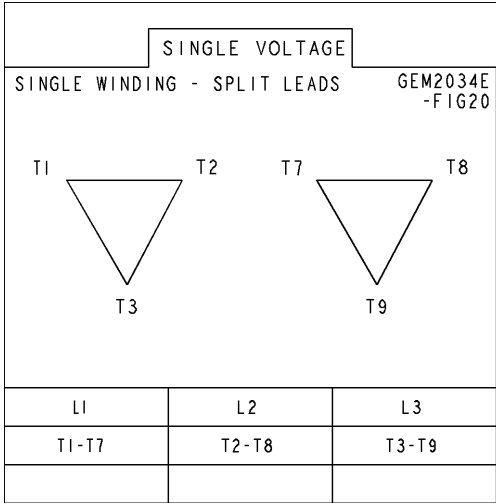
- NOTES:
1. CONDUIT BOX MAY BE PLACED WITH THE ENTRANCE DOWN, UP OR ON EITHER SIDE.
 2. F-1 ASSEMBLY AS SHOWN.
 3. F-2 ASSEMBLY CONDUIT BOX ON OPPOSITE SIDE.
 4. ALL DIMENSIONS ARE IN INCHES. BRACKETED DIMENSIONS ARE METRIC (MILLIMETERS).
 5. TOLERANCE ON PERMISSIBLE SHAFT EXTENSION ROUNDOFFS .0015 T.I.R.



SIGNATURES	DATE	TITLE
MODEL: TEJANI	08/10/15	<p>GE INDUSTRIAL MOTORS A WOLONG COMPANY</p> <p>OUTLINE</p> <p>447/449 TS TEFC XSD 841</p> <p>280 CU. IN. C. BOX, GROUND PAD</p> <p>239C6800ZC</p>
REVIEW: TEJANI	08/10/15	
CHECKED: ANIL	08/10/15	
DATE: ANIL	08/10/15	
ISSUED: TEJANI	08/10/15	SCALE: 0.180
SIZE: C	REF. NO.:	SHEET 1 OF 1

Marks:

Connection Diagram
GEM2034E-FIG20



End shield Assembly		
Part Description	DE Side Part#	ODE Side Part#
End Shield	115E4354AA1	115E4354LL1
Bearing	235A2516AC01	235A2516AC01
Slinger/Inproseal	235A4575GS3	235A4575GS3

Fan & Fan Cover Assembly	
Part Description	Part#
Fan	149C4287AA2
Fan Cover	128D6841AC1

Conduit & Accessories Box Assembly	
Part Description	Part#
Conduit Box	179B9058G03

Mechanical Accessories	
Part Description	Part#
Brake	
Tachometer	

