



GE INDUSTRIAL MOTORS
a **WOLONG** company

Product Technical Information

October 24, 2020

Data shown is for the current revision model #. Ensure your nameplate model # matches.

Model Number:	5KS449XAA208D2
Catalog Number:	M8949
Instruction Manual:	GEI-56128
Connection Diagram:	GEM2034E-FIG20
Outline Drawing:	239C6800YS

Accessory Connection Diagrams			
Bearing Thermocouple:	None	Heater:	None
RTD:	None	Thermistor:	None
Thermostat:	None	Winding Thermocouple:	None
Bearing RTD:	None		

Table of Contents

Specification	01
Performance Characteristics	02
Outline Drawing	03
Connection Drawing(s)	04
Spare parts	05

Marks:

MODEL NUMBER:	5KS449XAA208D2	Estimated Weight:	2940 Lbs
Outline Drawing:	239C6800YS	Time Rating:	CONT
Connection Diagram:	GEM2034E-FIG20	Enclosure:	TEFC
Instruction Book:	GEI-56128	Encl Construction:	841
Design Code:	49BD1181A	Ambient Max(°C):	40
Type:	KS	Alt Ambient Max(°C):	--
Frame:	449T	Insulation Class:	H
Phases:	3	NEMA Design:	B
Poles:	4	Nominal Efficiency:	96.2 %
Output Power:	300HP 222KW	Guaranteed Efficiency:	95.8 %
RPM:	1790	3/4 Load Efficiency:	--
Voltage:	460	KVA Code:	G
Hertz:	60	Max KVAR:	69.4
Amps - FL:	332.0	Power Factor:	88.0
Service Factor:	1.15	Bearing - DE:	6318ZC3
Alt Service Factor:	--	Bearing - ODE:	6318ZC3

Enclosure is Totally Enclosed Fan-Cooled

Stamped Nameplate Notes:

FOR DIRECT COUPLED LOAD ONLY
 DE BRG 90BC03JP3, ODE BRG 90BC03JP3
 STAMP NP249A5564P051 AS BELOW:
 MODEL:5KS449XAA208D2 S/N: XXX
 CSA CERTIFIED CSA09.2216219 FOR EX NA IIC 200 C GC
 CL 1 ZONE2 AEX NA IIC 200C;CL 1 DIV2 GRP ABCD 200C
 IN -25C <= AMB <= 40C, 1.0 SF ON SINE-WAVE PWR
 SURF TEMP 260C AT 1.15SF ON SINE-WAVE PWR
 OR 200 C VT OR 215 C CT OR 200 C CHP PWM CONTROL
 ALTERNATE RATING FOR PWM CONTROL 1.0SF 40C AMB
 VT 0-60 HZ, CT 45-60 HZ, CHP 60-75 HZ.
 EXCEPTION TO IEEE-STD-841-2009:SOUND POWER 94 DBA



Additional Information:

4P - T EXTN - SPLIT LEAD
PAINTED FRAME ID & SHAFT,
FAN COVER INSIDE & ODE E/S OUTSIDE
C/BOX 1260 CU IN - 2(4.00" NPT)
C/B GRD PLATE
INPRO SEAL BOTH ENDS
OIL RESISTANT SLEEVING ON LEADS
.0015" TIR SHAFT RUNOUT
ROUTINE TEST REPORT AND 5 POINT VIBRATION TEST
REPORT INCLUDED IN C/B
COPPER WASHER UNDER HEADS OF BEARING CAP BOLTS,
APPLY TITE-SEAL (A50CD427A) ON BEARING CAP SCREWS,
RABBETS AND PLUG THREADS.
GROUND PAD
F1 MOUNTING



Performance Characteristics

1st Winding 1st Connection

Design: 49BD1181A

Marks:

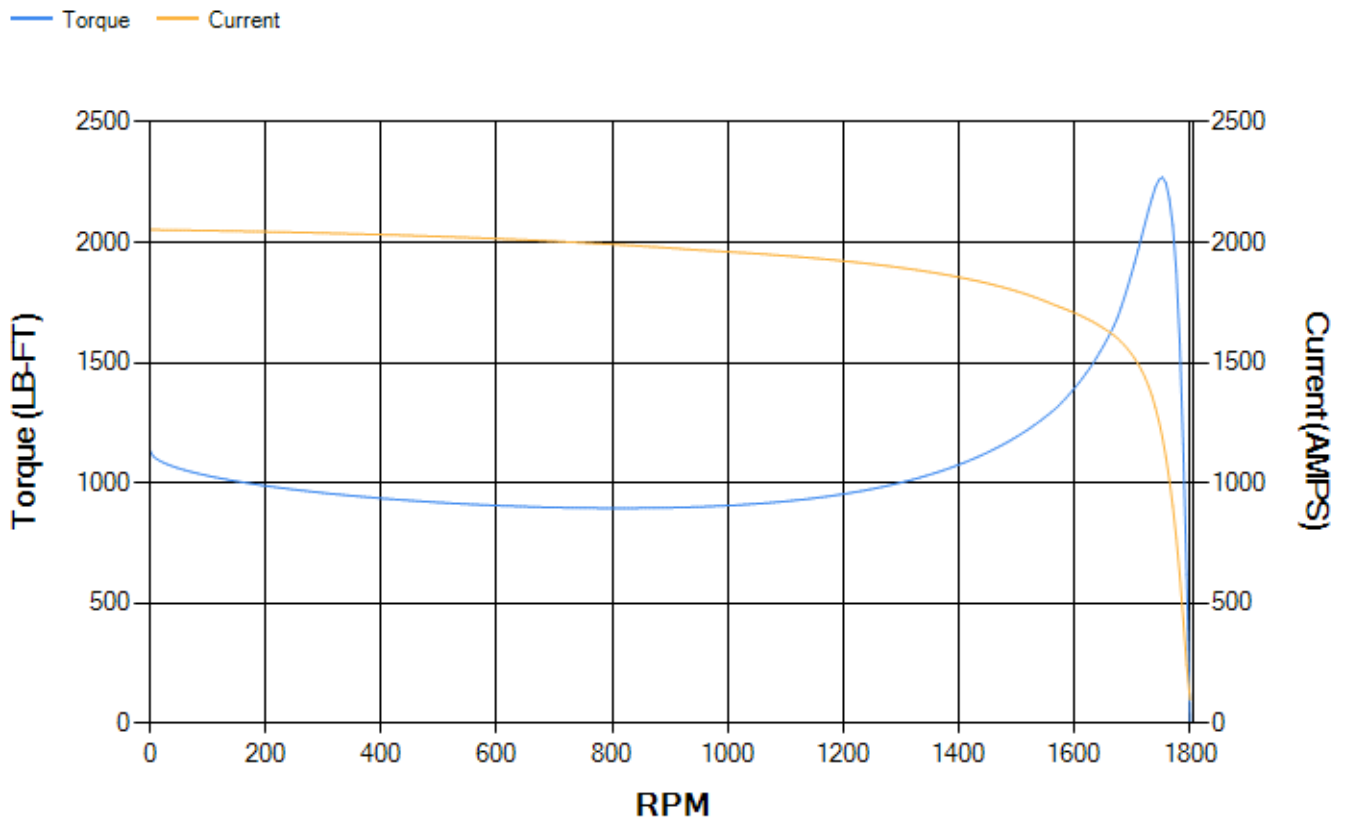
LOAD %	125.0	115.0	100.0	75.0	50.0	25.0	0.0
% EFF	95.61	95.79	96.21	96.17	95.84	93.74	0.00
% PF	88.27	88.23	87.8	85.51	78.93	59.1	4.19
AMPS	415.86	382.04	332.43	256.07	185.59	126.72	96.75

TORQ(FL)#FT	879.83	TORQ(LR)%FL	129.23	TORQ(BD)%FL	257.84
AMPS(LR)	2052.64	PF AT START	0.23		

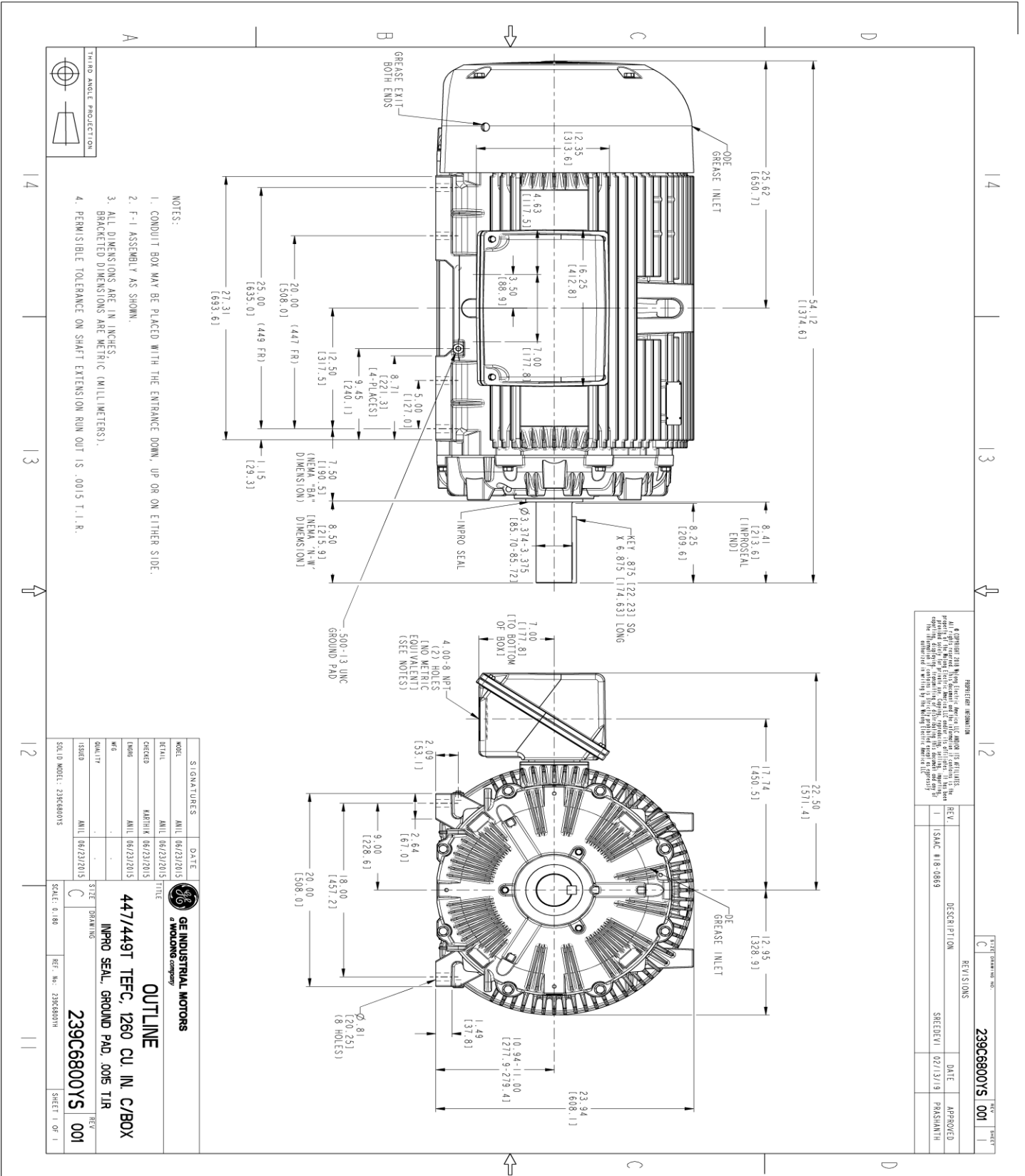
This motor is capable of two cold or one hot start with a maximum connected load inertia of 7829 Lb-Ft Sq (329.6 Kg-meter Sq)at 100% voltage, where the load torque varies with the square of the speed. Acceleration time with maximum inertia and the above load type is 60 seconds. Safe stall time at 100% voltage is 140 seconds cold, 73 seconds hot. Rotor inertia is 121.99 Lb-Ft Sq (5.14 Kg-meter Sq).

Open Circuit A-C:	1.651	Short Circuit D-C:	0.036
Short Circuit A-C:	0.07	X/R Ratio:	13.553
Stator Slots:	72	Rotor Slots:	58

Speed Torque Current Curve (First Connection, First Speed)



Marks:



- NOTES:
1. CONDUIT BOX MAY BE PLACED WITH THE ENTRANCE DOWN, UP OR ON EITHER SIDE.
 2. F-I ASSEMBLY AS SHOWN.
 3. ALL DIMENSIONS ARE IN INCHES. BRACKETED DIMENSIONS ARE METRIC (MILLIMETERS).
 4. PERMISSIBLE TOLERANCE ON SHAFT EXTENSION RUN OUT IS .0015 T.I.R.

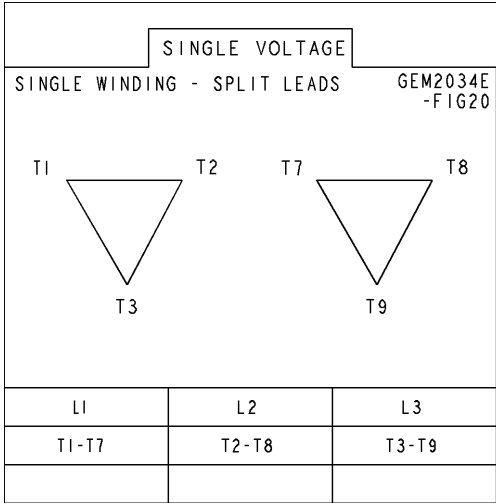
REPRODUCTION INFORMATION
 All rights reserved. This drawing is the property of GE Industrial Motors. It is to be used for the specific project and for the specific equipment only. It is not to be used for any other purpose without the written consent of GE Industrial Motors. The information contained herein is confidential and its disclosure to any third party is prohibited.

REV.	DESCRIPTION	DATE	APPROVED
1	ISAC #18-0869	02/13/19	PARSHANTH

SIGNATURES	DATE	<p>GE INDUSTRIAL MOTORS a WOLKONG company</p>
MODEL	DATE	
REV. 1	02/13/2015	<p>OUTLINE</p> <p>447/449T TEC, 1260 CU. IN. C/BOX</p> <p>IMPRO SEAL, GROUND PAD, .005 TLR</p> <p>239C6800YS</p>
CHECKED	DATE	
DATE	DATE	SCALE: 0.180
ISSUED	DATE	REF. NO: 239C6800TH
SIZE	DATE	SHEET 1 OF 1

Marks:

Connection Diagram
GEM2034E-FIG20



End shield Assembly		
Part Description	DE Side Part#	ODE Side Part#
End Shield	115E4355AA1	115E4355LM1
Bearing	235A2514AG01	235A2514AG01
Slinger/Inproseal	235A4575GS5	235A4575GS5

Fan & Fan Cover Assembly	
Part Description	Part#
Fan	159C7100G03
Fan Cover	128D6841AA1

Conduit & Accessories Box Assembly	
Part Description	Part#
Conduit Box	179B9058G03

Mechanical Accessories	
Part Description	Part#
Brake	
Tachometer	

