



GE INDUSTRIAL MOTORS
a **WOLONG** company

Product Technical Information

February 13, 2021

Data shown is for the current revision model #. Ensure your nameplate model # matches.

Model Number:	5KS447SAA114D7
Catalog Number:	M8957
Instruction Manual:	GEI-56128
Connection Diagram:	GEM2034E-FIG7
Outline Drawing:	239C6800ARL

Accessory Connection Diagrams

Bearing Thermocouple:	None	Heater:	None
RTD:	None	Thermistor:	None
Thermostat:	None	Winding Thermocouple:	None
Bearing RTD:	None		

Table of Contents

Specification	01
Performance Characteristics	02
Outline Drawing	03
Connection Drawing(s)	04
Spare parts	05

Marks:

MODEL NUMBER: 5KS447SAA114D7
Outline Drawing: 239C6800ARL
Connection Diagram: GEM2034E-FIG7
Instruction Book: GEI-56128
Design Code: 49BD0192B
Type: KS
Frame: 447TS
Phases: 3
Poles: 2
Output Power: 200HP 148KW
RPM: 3580
Voltage: 575
Hertz: 60
Amps - FL: 170.0
Service Factor: 1.15
Alt Service Factor: --

Estimated Weight: 2840 Lbs
Time Rating: CONT
Enclosure: TEFC
Encl Construction: 841
Ambient Max(°C): 40
Alt Ambient Max(°C): --
Insulation Class: H
NEMA Design: B
Nominal Efficiency: 95.4 %
Guaranteed Efficiency: 95.0 %
3/4 Load Efficiency: --
KVA Code: G
Max KVAR: 28.9
Power Factor: 92.5
Bearing - DE: 6314ZC3
Bearing - ODE: 6314ZC3

Enclosure is Totally Enclosed Fan-Cooled

Stamped Nameplate Notes:

IEEE-STD-841-2009
 DE BRG 70BC03JP30, ODE BRG 70BC03JP30
 STAMP NP249A5564P051 AS BELOW:
 MODEL:5KS447SAA114D7 S/N: XXX
 CSA CERTIFIED CSA09.2216219 FOR EX NA IIC 200 C GC
 CL 1 ZONE2 AEX NA IIC 200C;CL 1 DIV2 GRP ABCD 200C
 IN -40C <= AMB <= 40C, 1.0 SF ON SINE-WAVE PWR
 SURF TEMP 230C AT 1.15SF ON SINE-WAVE PWR
 OR 200C VT OR 215C CT OR --C CHP PWM CONTROL
 ALTERNATE RATING FOR PWM CONTROL 1.0SF 40C AMB
 VT 0-60 HZ, CT 30-60 HZ, CHP -- HZ.



Additional Information:

2P - TS EXTN
PAINTED FRAME ID & SHAFT,
FAN COVER INSIDE & ODE E/S OUTSIDE
C/BOX 700 CU IN - 3.00" NPT
OIL RESISTANT SLEEVING ON LEADS
.0015" TIR SHAFT RUNOUT
ROUTINE TEST REPORT AND 5 POINT VIBRATION TEST
REPORT INCLUDED IN C/B
GROUND PAD
F1 MOUNTING



Performance Characteristics

1st Winding 1st Connection

Design: 49BD0192B

Marks:

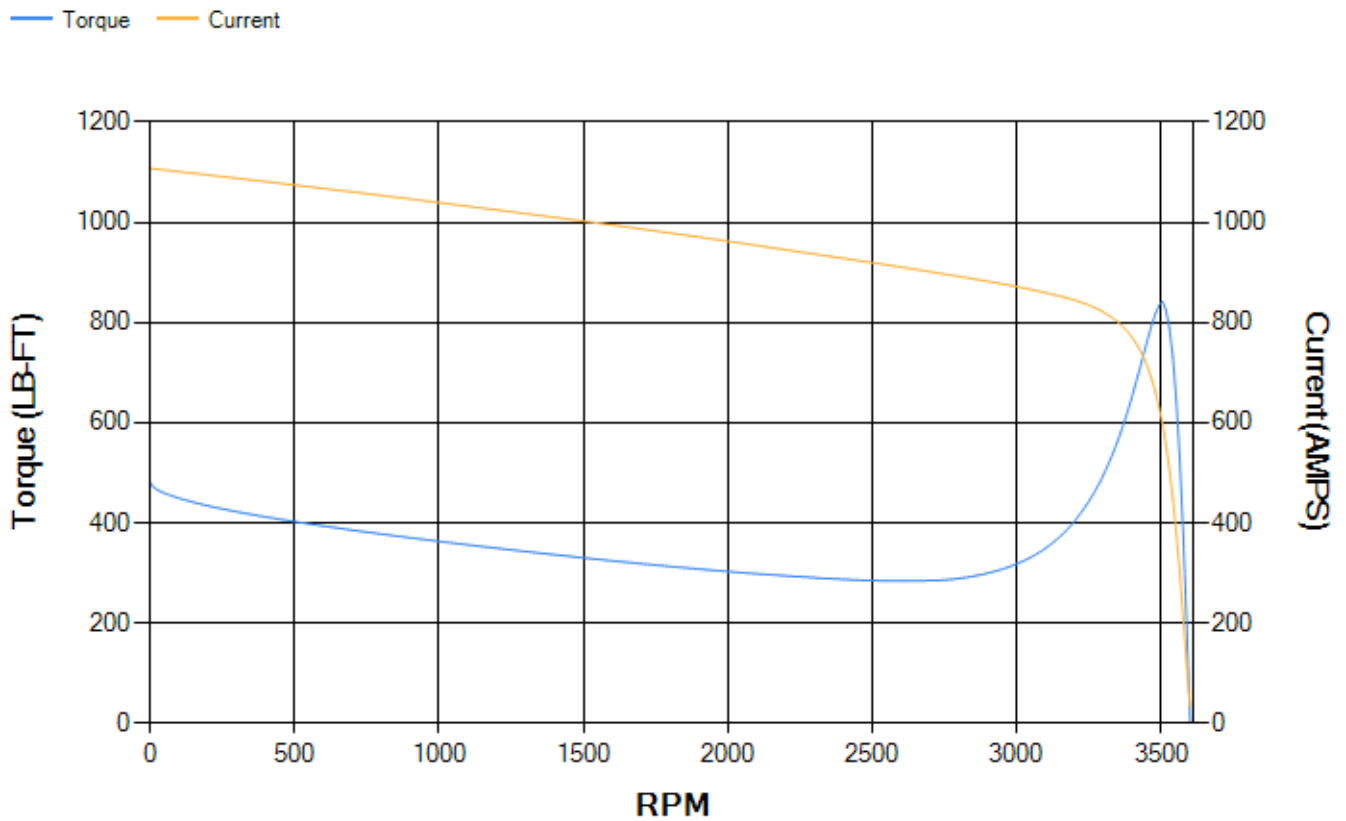
LOAD %	125.0	115.0	100.0	75.0	50.0	25.0	0.0
% EFF	95.13	95.33	95.78	95.75	95.38	93.05	0.00
% PF	91.93	92.18	92.32	91.68	88.54	75.39	7.56
AMPS	214.04	195.97	169.37	127.94	88.66	53.37	32.27

TORQ(FL)#FT	293.41	TORQ(LR)%FL	164.53	TORQ(BD)%FL	286.61
AMPS(LR)	1107.87	PF AT START	0.24		

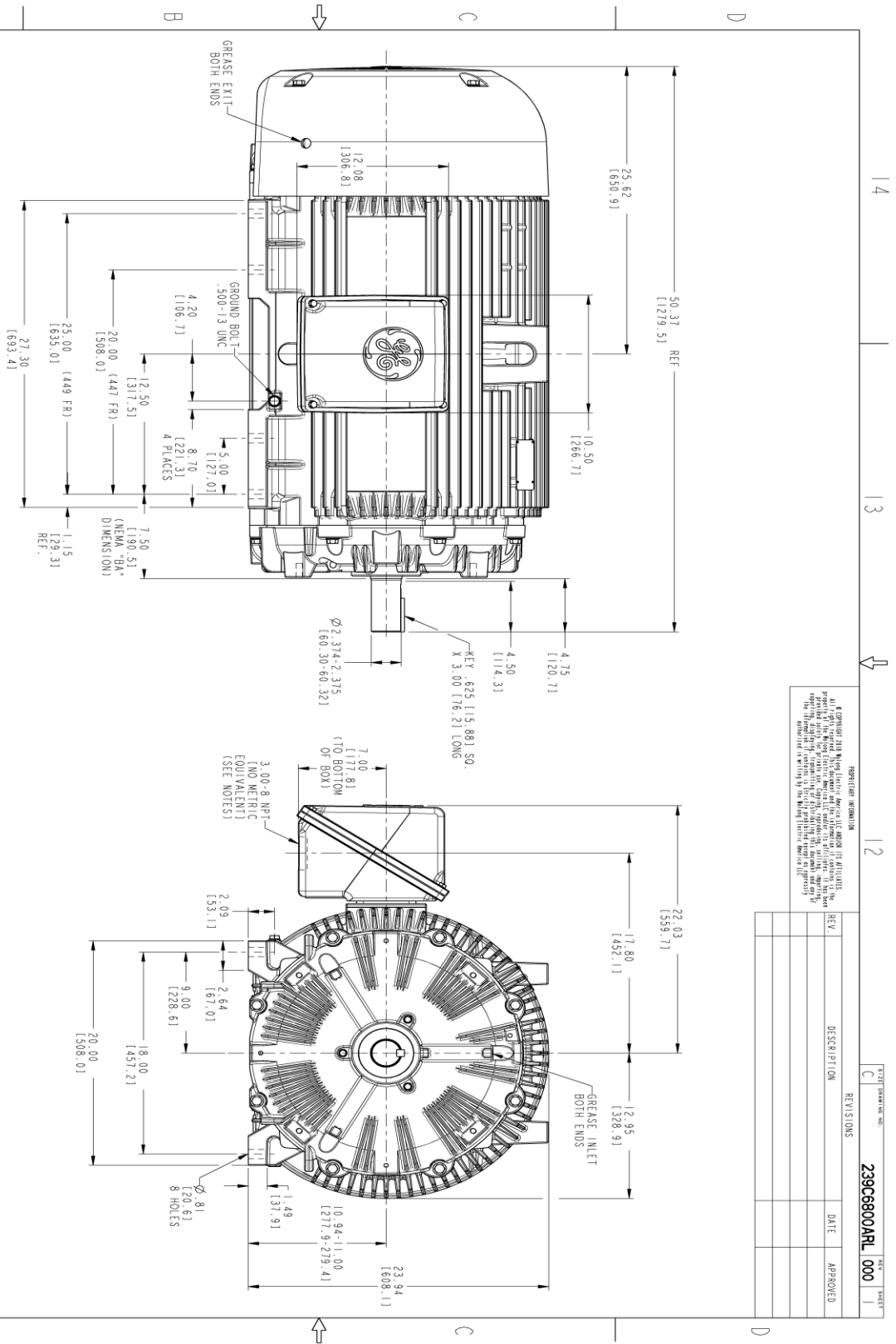
This motor is capable of two cold or one hot start with a maximum connected load inertia of 744 Lb-Ft Sq (31.32 Kg-meter Sq)at 100% voltage, where the load torque varies with the square of the speed. Acceleration time with maximum inertia and the above load type is 34 seconds. Safe stall time at 100% voltage is 78 seconds cold, 41 seconds hot. Rotor inertia is 51.17 Lb-Ft Sq (2.15 Kg-meter Sq).

Open Circuit A-C:	2.396	Short Circuit D-C:	0.034
Short Circuit A-C:	0.072	X/R Ratio:	12.879
Stator Slots:	48	Rotor Slots:	38

Speed Torque Current Curve (First Connection, First Speed)



Marks:



- NOTES:
1. CONDUIT BOX MAY BE PLACED WITH THE ENTRANCE DOWN, UP OR ON EITHER SIDE.
 2. F-1 ASSEMBLY AS SHOWN.
 3. ALL DIMENSIONS ARE IN INCHES AND BRACKETED DIMENSIONS ARE METRIC (MILLIMETERS).

PROHIBITION INFORMATION
 GE and the GE logo are registered trademarks of General Electric Company. All other marks are the property of their respective owners. This drawing is the property of General Electric Company and is not to be reproduced, stored in a retrieval system, or transmitted in any form or by any means, electronic, mechanical, photocopying, recording, or by any information storage and retrieval system, without the prior written permission of General Electric Company.

REV.	DESCRIPTION	DATE	APPROVED

SIGNATURES		DATE	
MODEL	SIGAR K (01/22/2021)		
DESIGN	SIGAR K (01/22/2021)		
CHECKED	SIGAR K (01/22/2021)		
DATE	SIGAR K (01/22/2021)		
WKS			
QUALITY			
ISSUED	SIGAR K (01/22/2021)		
SCALE: 0.180			
GE INDUSTRIAL MOTORS a WOLONG company		TITLE OUTLINE 447/449 TS TEFC 700 CU. IN. C/BOX, GROUND PAD	
SIZE DRAWING 239C6800ARL		REV 000	
SOLID MODEL: 239C6800ARL		REF. No: 239C6800AB	
SHEET 1 OF 1		SHEET 1 OF 1	



14 13 12 11

Marks:

Connection Diagram
GEM2034E-FIG7



End shield Assembly		
Part Description	DE Side Part#	ODE Side Part#
End Shield	115E4354AA1	115E4354LL1
Bearing	235A2516AC01	235A2516AC01
Slinger/Inproseal	149C4399G05	149C4399G05

Fan & Fan Cover Assembly	
Part Description	Part#
Fan	159C7100AA1
Fan Cover	128D6841AA1

Conduit & Accessories Box Assembly	
Part Description	Part#
Conduit Box	118D4408AD2

Mechanical Accessories	
Part Description	Part#
Brake	
Tachometer	

