



GE INDUSTRIAL MOTORS
a **WOLONG** company

Product Technical Information

February 19, 2021

Data shown is for the current revision model #. Ensure your nameplate model # matches.

Model Number:	5KS324SAA152D7
Catalog Number:	M8964
Instruction Manual:	GEI-56128
Connection Diagram:	GEM2034E-FIG7
Outline Drawing:	239C6001HZ

Accessory Connection Diagrams

Bearing Thermocouple:	None	Heater:	None
RTD:	None	Thermistor:	None
Thermostat:	None	Winding Thermocouple:	None
Bearing RTD:	None		

Table of Contents

Specification	01
Performance Characteristics	02
Outline Drawing	03
Connection Drawing(s)	04
Spare parts	05

Marks:

MODEL NUMBER: 5KS324SAA152D7
Outline Drawing: 239C6001HZ
Connection Diagram: GEM2034E-FIG7
Instruction Book: GEI-56128
Design Code: 32BD0110A
Type: KS
Frame: 324TSC
Phases: 3
Poles: 2
Output Power: 40HP 29.6KW
RPM: 3565
Voltage: 460
Hertz: 60
Amps - FL: 48.8
Service Factor: 1.15
Alt Service Factor: --

Estimated Weight: 620 Lbs
Time Rating: CONT
Enclosure: TEFC
Encl Construction: 841
Ambient Max(°C): 40
Alt Ambient Max(°C): --
Insulation Class: H
NEMA Design: B
Nominal Efficiency: 93.0 %
Guaranteed Efficiency: 92.4 %
3/4 Load Efficiency: --
KVA Code: G
Max KVAR: 15.5
Power Factor: 82.5
Bearing - DE: 6312ZC3
Bearing - ODE: 6312ZC3

Enclosure is Totally Enclosed Fan-Cooled

Stamped Nameplate Notes:

IEEE-STD-841-2009

DE BRG 60BC03JP30, ODE BRG 60BC03JP30

STAMP NP249A5564P051 AS BELOW:

MODEL:5KS324SAA152D7 S/N: XXX

CSA CERTIFIED CSA09.2216219 FOR EX NA IIC 200 C GC

CL 1 ZONE2 AEX NA IIC 200C;CL 1 DIV2 GRP ABCD 200C

IN -40C <= AMB <= 40C, 1.0 SF ON SINE-WAVE PWR

SURF TEMP 260C AT 1.15SF ON SINE-WAVE PWR

OR 200C VT OR 230C CT OR 200C CHP PWM CONTROL

ALTERNATE RATING FOR PWM CONTROL 1.0SF 40C AMB

VT 0 - 60 HZ, CT 8.6 - 60 HZ, CHP 60 - 75 HZ.



Additional Information:

2P - TS EXTN
PAINTED FRAME ID & SHAFT,
FAN COVER INSIDE & ODE E/S OUTSIDE
C FACE ON DE
C/BOX 346 CU IN - 3.00" NPT
OIL RESISTANT SLEEVING ON LEADS
.0015" TIR SHAFT RUNOUT
ROUTINE TEST REPORT AND 5 POINT VIBRATION TEST
REPORT INCLUDED IN C/B
GROUND PAD
F1 MOUNTING



Performance Characteristics

1st Winding 1st Connection

Design: 32BD0110A

Marks:

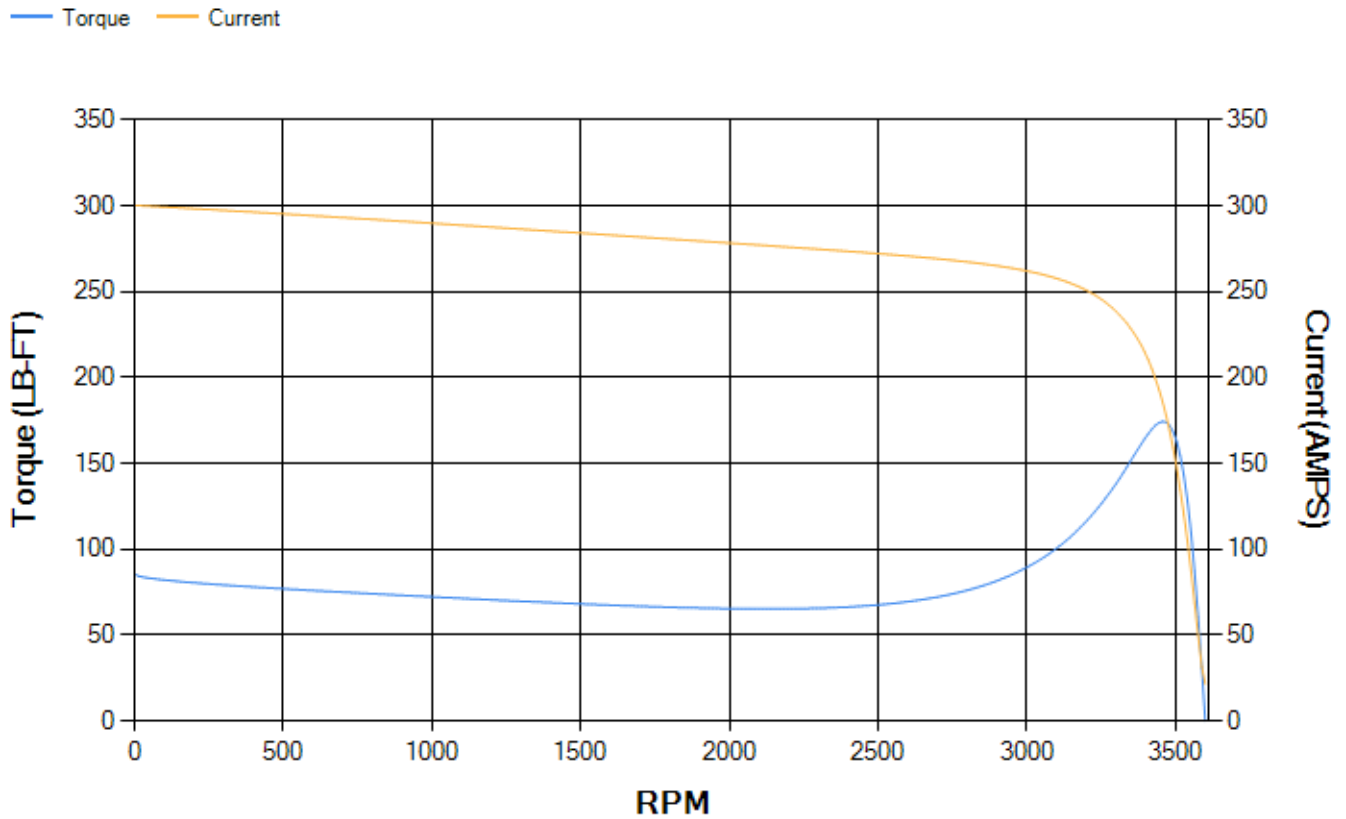
LOAD %	125.0	115.0	100.0	75.0	50.0	25.0	0.0
% EFF	92.47	92.67	93.06	92.79	91.69	86.97	0.00
% PF	84.8	84.01	82.26	76.97	66.05	43.76	5.58
AMPS	59.68	55.3	48.84	39.31	30.91	24.59	21.61

TORQ(FL)#FT 58.88 **TORQ(LR)%FL** 145.5 **TORQ(BD)%FL** 296.11
AMPS(LR) 300.43 **PF AT START** 0.29

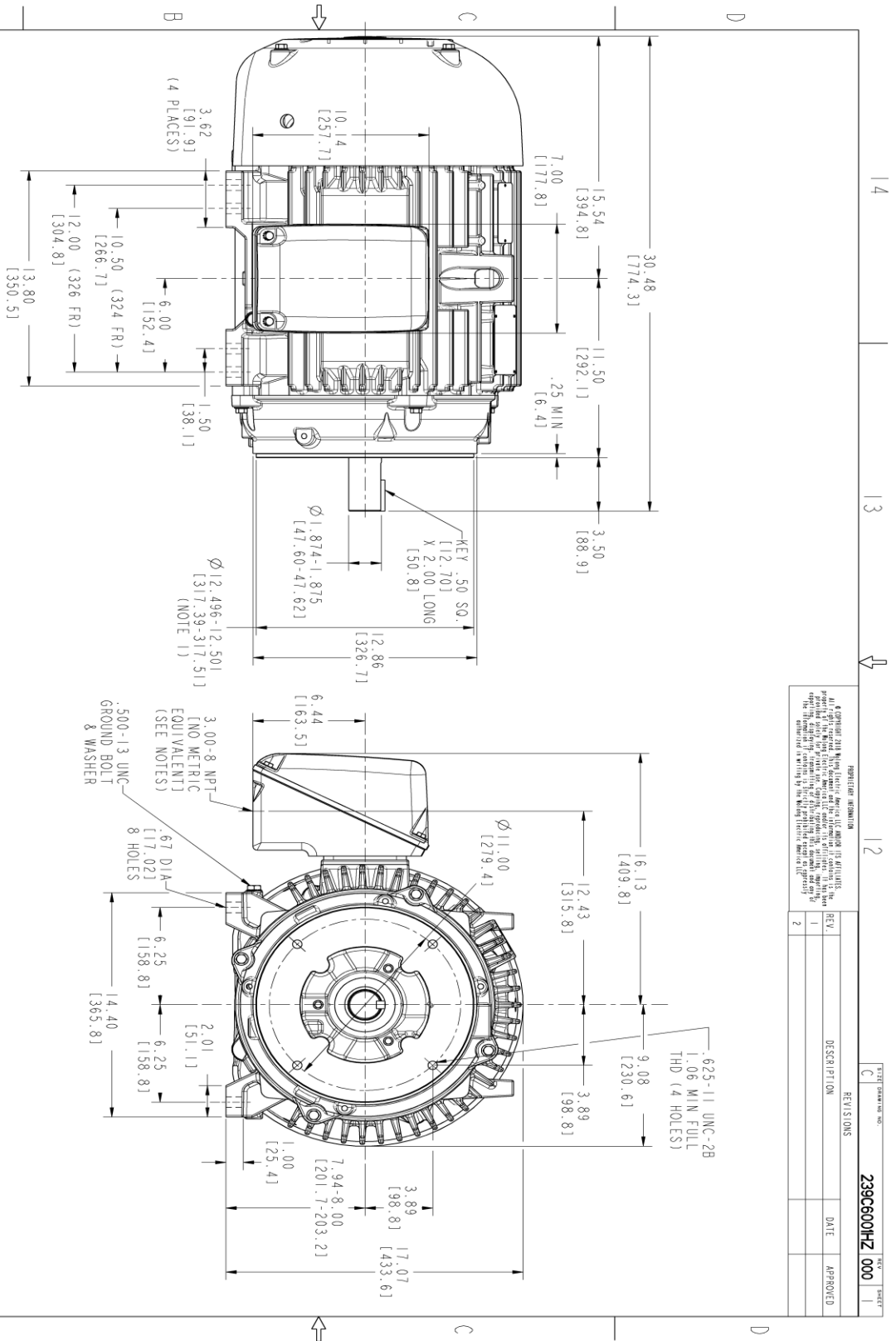
This motor is capable of two cold or one hot start with a maximum connected load inertia of 117 Lb-Ft Sq (4.93 Kg-meter Sq)at 100% voltage, where the load torque varies with the square of the speed. Acceleration time with maximum inertia and the above load type is 23 seconds. Safe stall time at 100% voltage is 52 seconds cold, 27 seconds hot. Rotor inertia is 3.11 Lb-Ft Sq (0.13 Kg-meter Sq).

Open Circuit A-C: 0.598 **Short Circuit D-C:** 0.017
Short Circuit A-C: 0.041 **X/R Ratio:** 6.428
Stator Slots: 48 **Rotor Slots:** 38

Speed Torque Current Curve (First Connection, First Speed)



Marks:



NOTES :

1. CONDUIT BOX MAY BE PLACED WITH THE ENTRANCE DOWN, UP OR ON EITHER SIDE.
2. F-1 ASM AS SHOWN.
3. ALL DIMENSIONS ARE IN INCHES. BRACKETED DIMENSIONS ARE METRIC (MILLIMETERS)

PROHIBITION INFORMATION
 All rights reserved. This document is the property of GE Industrial Motors. It is not to be reproduced, stored in a retrieval system, or transmitted in any form or by any means, electronic, mechanical, photocopying, recording, or by any information storage and retrieval system, without the prior written permission of GE Industrial Motors. The information contained herein is the confidential property of GE Industrial Motors.

REV.	DESCRIPTION	DATE	APPROVED
1			
2			



THIRD ANGLE PROJECTION

14 13 12 11

SIGNATURES	DATE	GE INDUSTRIAL MOTORS A WOLSKEL COMPANY
MODEL: MACH1	02/03/21	OUTLINE 324/326 TSC TFC XSD UL TRA 346 CU IN CONDUIT BOX; GROUND PAD 239C600HZ
REV: MACH1	02/03/21	
CHECKED: MACH1	02/03/21	
DATE: MACH1	02/03/21	
ISSUED: MACH1	02/03/21	SCALE: 0.250 REF. NO.: SHEET 1 OF 1

Marks:

Connection Diagram
GEM2034E-FIG7



End shield Assembly		
Part Description	DE Side Part#	ODE Side Part#
End Shield	115E4203AA1	115E4200LA1
Bearing	235A2509AS01	235A2509AS01
Slinger/Inproseal	149C4399G04	149C4399G04

Fan & Fan Cover Assembly	
Part Description	Part#
Fan	159C6700G02
Fan Cover	128D6800AA1

Conduit & Accessories Box Assembly	
Part Description	Part#
Conduit Box	149C4429AA2

Mechanical Accessories	
Part Description	Part#
Brake	
Tachometer	

