



**GE INDUSTRIAL MOTORS**  
a **WOLONG** company

# Product Technical Information

June 22, 2020

Data shown is for the current revision model #. Ensure your nameplate model # matches.

<b>Model Number:</b>	<b>5KS326SAA146D7</b>
<b>Catalog Number:</b>	<b>M8966</b>
<b>Instruction Manual:</b>	GEI-56128
<b>Connection Diagram:</b>	GEM2034E-FIG7
<b>Outline Drawing:</b>	239C6001AF

## Accessory Connection Diagrams

<b>Bearing Thermocouple:</b>	None	<b>Heater:</b>	None
<b>RTD:</b>	None	<b>Thermistor:</b>	None
<b>Thermostat:</b>	None	<b>Winding Thermocouple:</b>	None
<b>Bearing RTD:</b>	None		

## Table of Contents

Specification	01
Performance Characteristics	02
Outline Drawing	03
Connection Drawing(s)	04
Spare parts	05

Marks:

<b>MODEL NUMBER:</b>	<b>5KS326SAA146D7</b>	<b>Estimated Weight:</b>	670 Lbs
<b>Outline Drawing:</b>	239C6001AF	<b>Time Rating:</b>	CONT
<b>Connection Diagram:</b>	GEM2034E-FIG7	<b>Enclosure:</b>	TEFC
<b>Instruction Book:</b>	GEI-56128	<b>Encl Construction:</b>	X\$D
<b>Design Code:</b>	32BD0112A	<b>Ambient Max(°C):</b>	40
<b>Type:</b>	KS	<b>Alt Ambient Max(°C):</b>	55
<b>Frame:</b>	326TSC	<b>Insulation Class:</b>	H
<b>Phases:</b>	3	<b>NEMA Design:</b>	B
<b>Poles:</b>	2	<b>Nominal Efficiency:</b>	93.0 %
<b>Output Power:</b>	50HP 37KW	<b>Guaranteed Efficiency:</b>	92.4 %
<b>RPM:</b>	3565	<b>3/4 Load Efficiency:</b>	93.8 %
<b>Voltage:</b>	460	<b>KVA Code:</b>	G
<b>Hertz:</b>	60	<b>Max KVAR:</b>	15.1
<b>Amps - FL:</b>	58.5	<b>Power Factor:</b>	86.0
<b>Service Factor:</b>	1.15	<b>Bearing - DE:</b>	6312ZC3
<b>Alt Service Factor:</b>	1.00	<b>Bearing - ODE:</b>	6312ZC3

Enclosure is Totally Enclosed Fan-Cooled

---

Stamped Nameplate Notes:

STAMP NP249A5564P051 AS BELOW:  
 MODEL:5KS326SAA146D7 S/N: XXX  
 CSA CERTIFIED CSA09.2216219 FOR EX NA IIC 200 C GC  
 CL 1 ZONE2 AEX NA IIC 200C;CL 1 DIV2 GRP ABCD 200C  
 IN -40C <= AMB <= 40C, 1.0 SF ON SINE-WAVE PWR  
 SURF TEMP 260C AT 1.15SF ON SINE-WAVE PWR  
 OR 215C VT OR 230C CT OR 215C CHP PWM CONTROL  
 ALTERNATE RATING FOR PWM CONTROL 1.0SF 40C AMB  
 VT 0 - 60 HZ, CT 30-60 HZ, CHP 60-75 HZ

Additional Information:

2P - TS EXTN  
 C FACE ON DE  
 346 CU IN - 3.00" NPT  
 OIL RESISTANT SLEEVING ON LEADS  
 F1 MOUNTING



**Performance Characteristics**

1st Winding 1st Connection

**Design: 32BD0112A**

**Marks:**

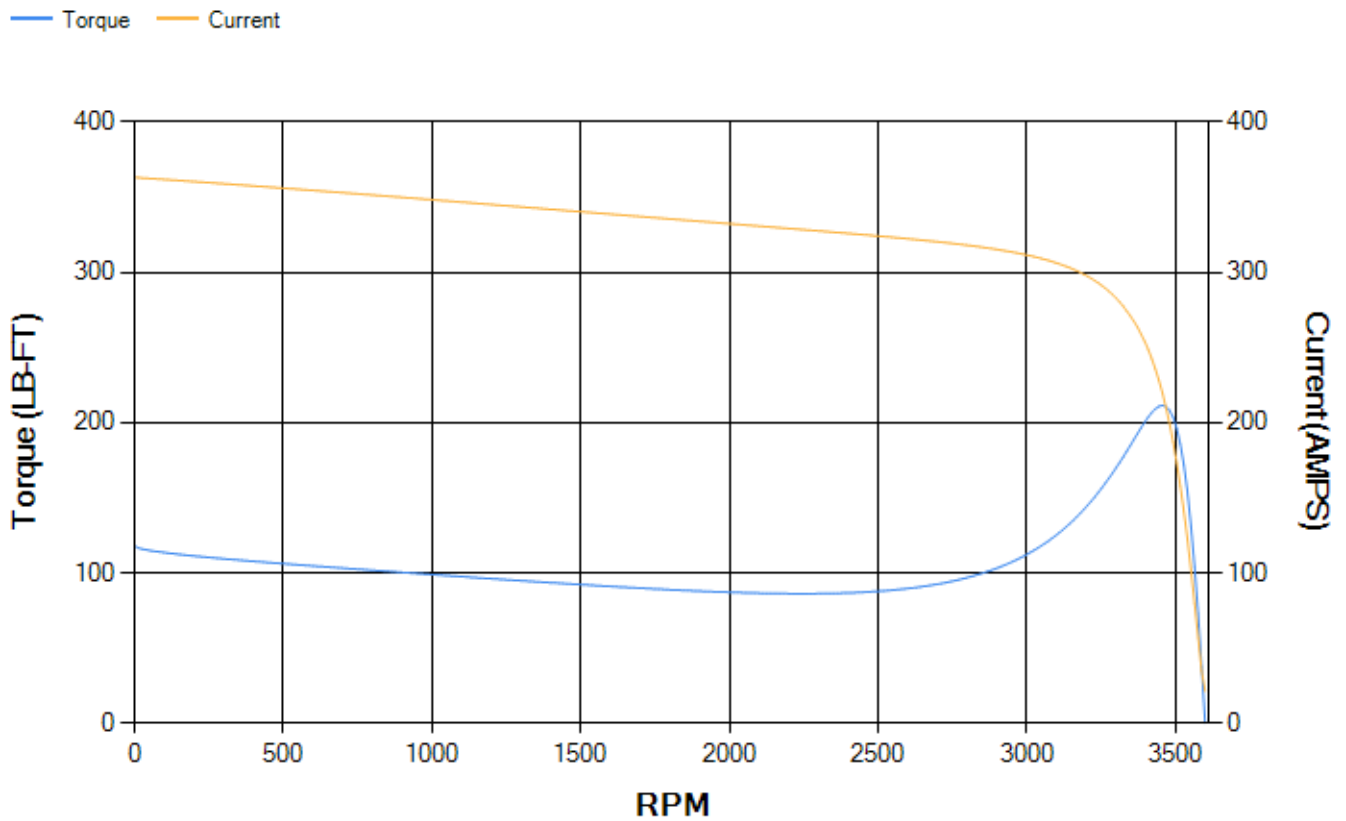
LOAD %	125.0	115.0	100.0	75.0	50.0	25.0	0.0
% EFF	93.06	93.31	93.8	93.75	93.07	89.44	0.00
% PF	87.6	87.16	86.04	82.19	73.18	51.26	5.52
AMPS	71.76	66.17	57.92	45.55	34.36	25.52	21.24

<b>TORQ(FL)#FT</b>	73.65	<b>TORQ(LR)%FL</b>	160.29	<b>TORQ(BD)%FL</b>	286.84
<b>AMPS(LR)</b>	363.26	<b>PF AT START</b>	0.31		

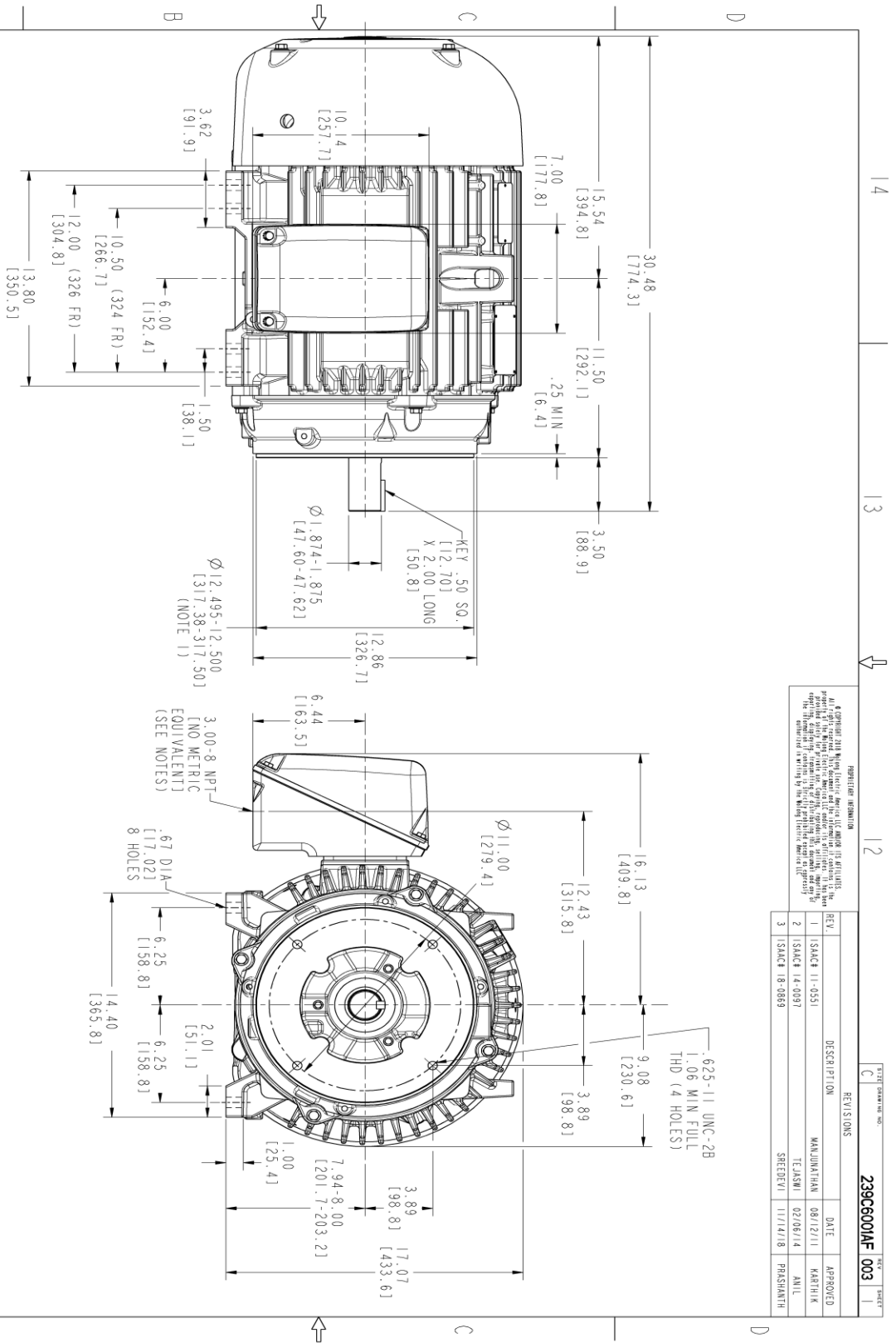
This motor is capable of two cold or one hot start with a maximum connected load inertia of 127 Lb-Ft Sq (5.35 Kg-meter Sq)at 100% voltage, where the load torque varies with the square of the speed. Acceleration time with maximum inertia and the above load type is 19 seconds. Safe stall time at 100% voltage is 45 seconds cold, 22 seconds hot. Rotor inertia is 4.02 Lb-Ft Sq (0.17 Kg-meter Sq).

<b>Open Circuit A-C:</b>	0.702	<b>Short Circuit D-C:</b>	0.018
<b>Short Circuit A-C:</b>	0.039	<b>X/R Ratio:</b>	6.692
<b>Stator Slots:</b>	48	<b>Rotor Slots:</b>	38

**Speed Torque Current Curve (First Connection, First Speed)**



Marks:



NOTES :

1. CONDUIT BOX MAY BE PLACED WITH THE ENTRANCE DOWN, UP OR ON EITHER SIDE.
2. F-1 ASM AS SHOWN.
3. F-2 ASM - HAS CONDUIT BOX ON OPPOSITE SIDE.
4. ALL DIMENSIONS ARE IN INCHES. BRACKETED DIMENSIONS ARE METRIC (MILLIMETERS)

PROPRIETARY INFORMATION  
 © Copyright 2018 GE Industrial Motors, LLC. All rights reserved. This drawing is the property of GE Industrial Motors, LLC. It is intended for use only for the specific application and configuration of the motor and is not to be used for any other purpose without the written consent of GE Industrial Motors, LLC. The information contained herein is confidential and its disclosure to any third party is prohibited.

REV.	DESCRIPTION	DATE	APPROVED
1	ISAC# 11-0551	08/12/11	KATHIK
2	ISAC# 14-0091	02/08/14	ANIL
3	ISAC# 18-0889	11/14/18	PRASHANTH

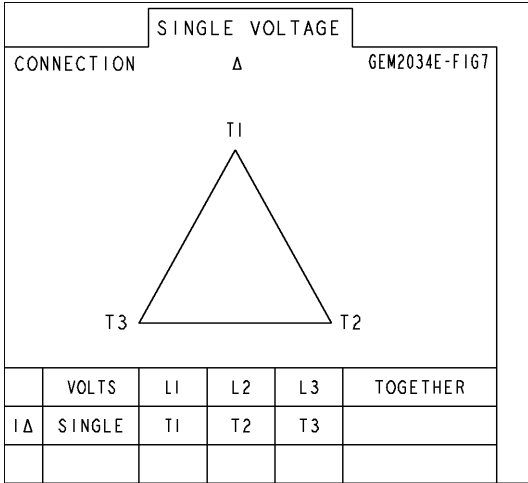


THIRD ANGLE PROJECTION

SIGNATURES	DATE	TITLE
MODEL: MGRJAU	03/14/02	GE INDUSTRIAL MOTORS A WOLKING COMPANY
CHECKED: MANIVANNAN	03/14/02	OUTLINE
DATE:		324/326 TSC TEFC XSD ULTRA
ISSUED:	MGRJAU	346 CU IN. CONDUIT BOX
QUALITY:		239C6001AF
SCALE: 0.250		REV
REF. NO.:		003
		SHEET 1 OF 1

**Marks:**

**Connection Diagram**  
**GEM2034E-FIG7**



End shield Assembly		
Part Description	DE Side Part#	ODE Side Part#
End Shield	115E4203AA1	115E4200LA1
Bearing	235A2509AS01	235A2509AS01
Slinger/Inproseal	149C4399G04	149C4399G04

Fan & Fan Cover Assembly	
Part Description	Part#
Fan	159C6700G02
Fan Cover	128D6800AA1

Conduit & Accessories Box Assembly	
Part Description	Part#
Conduit Box	149C4429AA2

Mechanical Accessories	
Part Description	Part#
Brake	
Tachometer	

