



GE INDUSTRIAL MOTORS
a **WOLONG** company

Product Technical Information

June 25, 2020

Data shown is for the current revision model #. Ensure your nameplate model # matches.

Model Number:	5KS324XAA279D5
Catalog Number:	M8972
Instruction Manual:	GEI-56128
Connection Diagram:	GEM2034E-FIG7
Outline Drawing:	239C6001FR

Accessory Connection Diagrams

Bearing Thermocouple:	None	Heater:	None
RTD:	None	Thermistor:	None
Thermostat:	None	Winding Thermocouple:	None
Bearing RTD:	None		

Table of Contents

Specification	01
Performance Characteristics	02
Outline Drawing	03
Connection Drawing(s)	04
Spare parts	05

Marks:

MODEL NUMBER: 5KS324XAA279D5
Outline Drawing: 239C6001FR
Connection Diagram: GEM2034E-FIG7
Instruction Book: GEI-56128
Design Code: 32BD1182A
Type: KS
Frame: 324TC
Phases: 3
Poles: 4
Output Power: 40HP 29.6KW
RPM: 1780
Voltage: 460
Hertz: 60
Amps - FL: 49.7
Service Factor: 1.15
Alt Service Factor: --

Estimated Weight: 670 Lbs
Time Rating: CONT
Enclosure: TEFC
Encl Construction: 841
Ambient Max(°C): 40
Alt Ambient Max(°C): --
Insulation Class: H
NEMA Design: B
Nominal Efficiency: 94.1 %
Guaranteed Efficiency: 93.6 %
3/4 Load Efficiency: --
KVA Code: G
Max KVAR: 15.2
Power Factor: 80.0
Bearing - DE: 6312ZC3
Bearing - ODE: 6312ZC3

Enclosure is Totally Enclosed Fan-Cooled

Stamped Nameplate Notes:

IEEE-STD-841-2009
 DE BRG 60BC03JP30, ODE BRG 60BC03JP30
 STAMP NP249A5564P051 AS BELOW:
 MODEL:5KS324XAA279D5 S/N: XXX
 CSA CERTIFIED CSA09.2216219 FOR EX NA IIC 200 C GC
 CL 1 ZONE2 AEX NA IIC 200C;CL 1 DIV2 GRP ABCD 200C
 IN -25C <= AMB <= 40C, 1.0 SF ON SINE-WAVE PWR
 SURF TEMP 230C AT 1.15SF ON SINE-WAVE PWR
 OR 200 C VT OR 230 C CT OR 200 C CHP PWM CONTROL
 ALTERNATE RATING FOR PWM CONTROL 1.0SF 40C AMB
 VT 0-60 HZ, CT 3-60 HZ, CHP 60-90 HZ.



Additional Information:

4P - T EXTN
PAINTED FRAME ID & SHAFT,
FAN COVER INSIDE & ODE E/S OUTSIDE
C FACE ON DE
346 CU IN - 3.00" NPT
INPRO SEAL BOTH ENDS
OIL RESISTANT SLEEVING ON LEADS
.0015" TIR SHAFT RUNOUT
ROUTINE TEST REPORT AND 5 POINT VIBRATION TEST
REPORT INCLUDED IN C/B
COPPER WASHER UNDER HEADS OF BEARING CAP BOLTS,
APPLY TITE-SEAL (A50CD427A) ON BEARING CAP SCREWS,
RABBETS AND PLUG THREADS.
GROUND PAD
F1 MOUNTING



Performance Characteristics

1st Winding 1st Connection

Design: 32BD1182A

Marks:

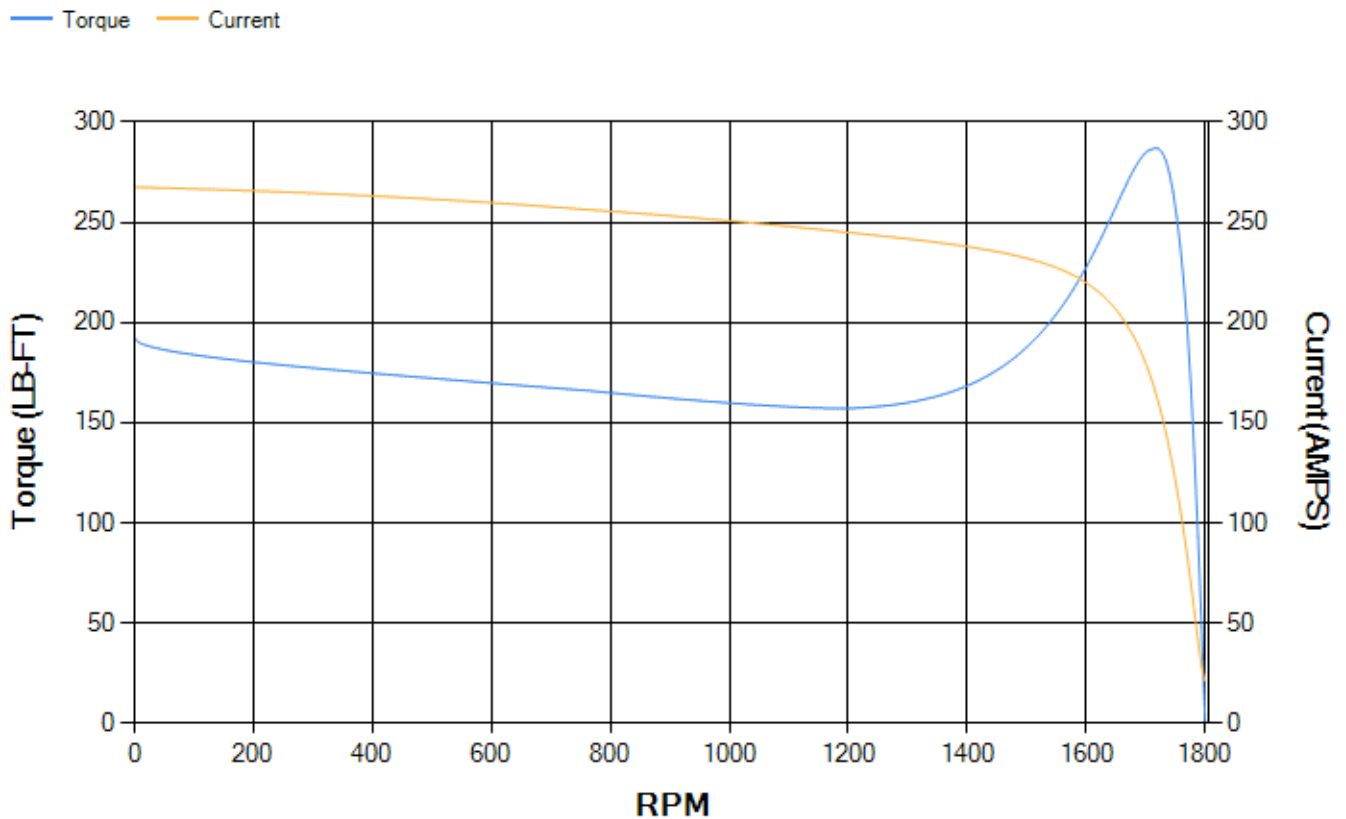
LOAD %	125.0	115.0	100.0	75.0	50.0	25.0	0.0
% EFF	93.44	93.73	94.29	94.38	93.95	91	0.00
% PF	82.18	81.61	80.15	75.28	64.7	42.44	3.55
AMPS	60.94	56.28	49.43	39.52	30.79	24.24	21.17

TORQ(FL)#FT	118.11	TORQ(LR)%FL	162.85	TORQ(BD)%FL	242.14
AMPS(LR)	267.59	PF AT START	0.33		

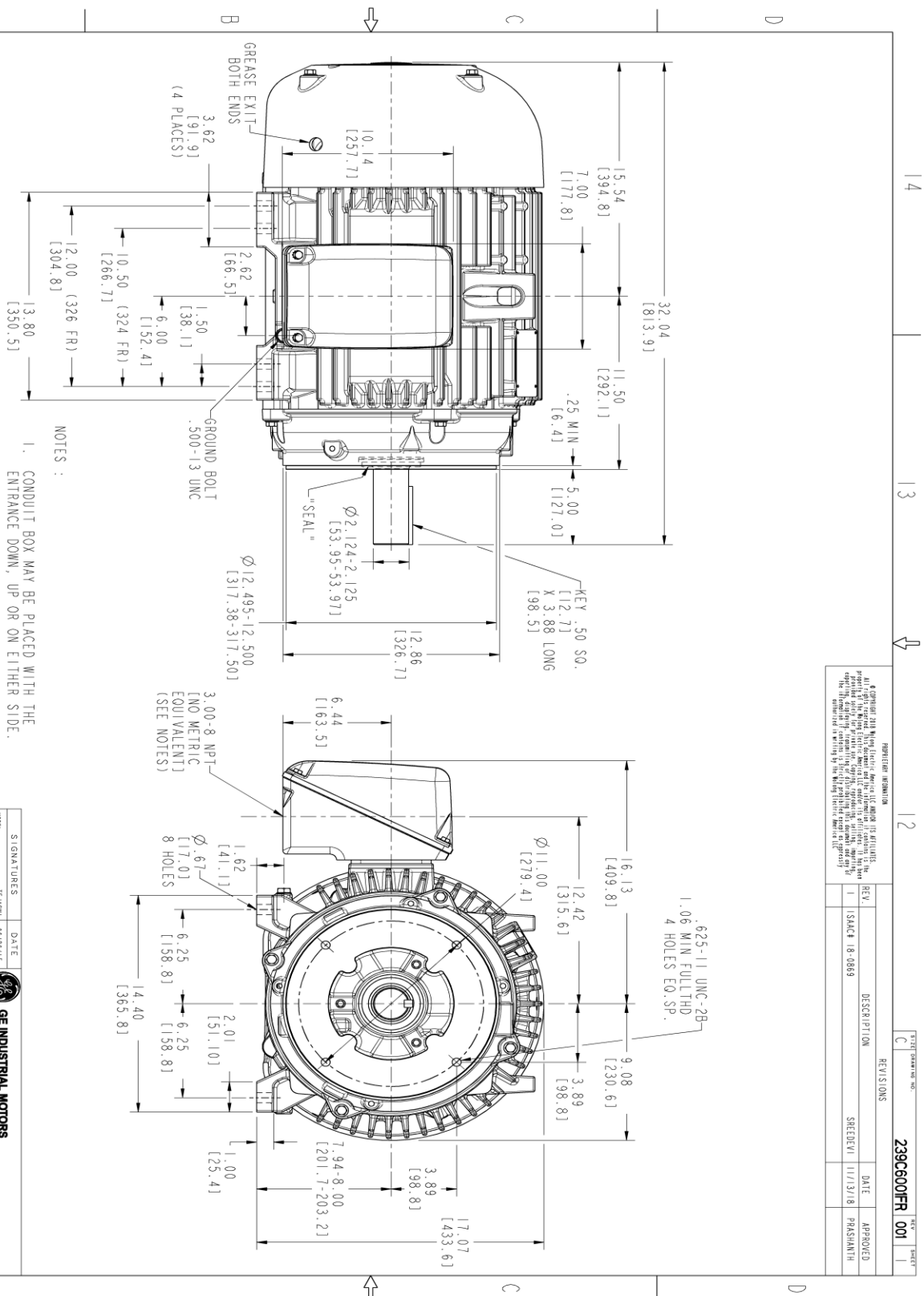
This motor is capable of two cold or one hot start with a maximum connected load inertia of 952 Lb-Ft Sq (40.08 Kg-meter Sq)at 100% voltage, where the load torque varies with the square of the speed. Acceleration time with maximum inertia and the above load type is 40 seconds. Safe stall time at 100% voltage is 88 seconds cold, 47 seconds hot. Rotor inertia is 6.94 Lb-Ft Sq (0.29 Kg-meter Sq).

Open Circuit A-C:	0.479	Short Circuit D-C:	0.022
Short Circuit A-C:	0.032	X/R Ratio:	8.428
Stator Slots:	48	Rotor Slots:	38

Speed Torque Current Curve (First Connection, First Speed)



Marks:



PROHIBITED INFORMATION
 All rights reserved. This document is the property of GE Industrial Motors. It is not to be reproduced, stored in a retrieval system, or transmitted in any form or by any means, electronic, mechanical, photocopying, recording, or by any information storage and retrieval system, without the prior written permission of GE Industrial Motors. The information contained herein is the confidential and proprietary information of GE Industrial Motors.

TITLE DRAWING NO. C		REV/ISS DUNS	
239C6001FR 001		REV.	DESCRIPTION
1	ISACH	18-0869	DATE
	SREDEVI	11/13/18	APPROVED
			PRASHANTH

NOTES :

1. CONDUIT BOX MAY BE PLACED WITH THE ENTRANCE DOWN, UP OR ON EITHER SIDE.
2. F-1 ASM AS SHOWN.
3. F-2 ASM HAS CONDUIT BOX ON OPPOSITE SIDE.
4. BRACKETED DIMENSIONS ARE METRIC (MILLIMETERS)
5. TOLERANCE ON PERMISSIBLE SHAFT EXTENSION RUNOUT IS .0015 T.I.R



THIRD ANGLE PROJECTION



GE INDUSTRIAL MOTORS
 a WOLONG company

OUTLINE

324/326 TC TEFC XSD 841

346 CU IN CONDUIT BOX

SIGNATURES	DATE	TITLE 324/326 TC TEFC XSD 841 346 CU IN CONDUIT BOX 239C6001FR
DESIGNER	06/28/15	
CHECKED	06/28/15	
DATE	06/28/15	
ISSUED	06/28/15	SCALE: 0.250
SCALE: 0.250	REF. NO: 239C6001A	SHEET 1 OF 1

Marks:

Connection Diagram
GEM2034E-FIG7



End shield Assembly		
Part Description	DE Side Part#	ODE Side Part#
End Shield	115E4203AA1	115E4200LA1
Bearing	235A2509AS01	235A2509AS01
Slinger/Inproseal	235A4575GS2	235A4575GS2

Fan & Fan Cover Assembly	
Part Description	Part#
Fan	159C6900G04
Fan Cover	128D6800AA1

Conduit & Accessories Box Assembly	
Part Description	Part#
Conduit Box	149C4429AA2

Mechanical Accessories	
Part Description	Part#
Brake	
Tachometer	

