



GE INDUSTRIAL MOTORS
a **WOLONG** company

Product Technical Information

January 1, 2023

Data shown is for the current revision model #. Ensure your nameplate model # matches.

Model Number:	5KGS324SAA308A
Catalog Number:	M8980
Instruction Manual:	GEI-56128
Connection Diagram:	GEM2034E-FIG7
Outline Drawing:	239C6000AE

Accessory Connection Diagrams

Bearing Thermocouple:	None	Heater:	None
RTD:	None	Thermistor:	None
Thermostat:	None	Winding Thermocouple:	None
Bearing RTD:	None		

Table of Contents

Specification	01
Performance Characteristics	02
Outline Drawing	03
Connection Drawing(s)	04
Spare parts	05

Marks:

MODEL NUMBER:	5KGS324SAA308A	Estimated Weight:	730 Lbs
Outline Drawing:	239C6000AE	Time Rating:	CONT
Connection Diagram:	GEM2034E-FIG7	Enclosure:	TEFC
Instruction Book:	GEI-56128	Encl Construction:	X\$D
Design Code:	32BD3109A	Ambient Max(°C):	40
Type:	KGS	Alt Ambient Max(°C):	--
Frame:	324T	Insulation Class:	F
Phases:	3	NEMA Design:	C
Poles:	6	Nominal Efficiency:	93.0 %
Output Power:	25HP 18.5KW	Guaranteed Efficiency:	92.4 %
RPM:	1175	3/4 Load Efficiency:	--
Voltage:	460	KVA Code:	G
Hertz:	60	Max KVAR:	10.4
Amps - FL:	32.7	Power Factor:	77.0
Service Factor:	1.15	Bearing - DE:	6312ZC3
Alt Service Factor:	--	Bearing - ODE:	6312ZC3

Enclosure is Totally Enclosed Fan-Cooled

Stamped Nameplate Notes:

STAMP NP249A5564P051 AS BELOW:

MODEL:5KGS324SAA308A S/N: XXX

CSA CERTIFIED CSA09.2216219 FOR EX NA IIC 200 C GC

CL 1 ZONE2 AEX NA IIC 200C;CL 1 DIV2 GRP ABCD 200C

IN -40C <= AMB <= 40C, 1.0 SF ON SINE-WAVE PWR

SURF TEMP 200C AT 1.15SF ON SINE-WAVE PWR

OR 200C VT OR 200C CT OR 200C CHP PWM CONTROL

ALTERNATE RATING FOR PWM CONTROL 1.0SF 40C AMB

VT 0 - 60 HZ, CT 10 HZ, CHP 75 HZ.



Additional Information:

6P - T EXTN
C/BOX 346 CU IN - 3.00" NPT
OIL RESISTANT SLEEVING ON LEADS
F1 MOUNTING
UTD FOR 5KGS324SAA308



Performance Characteristics

1st Winding 1st Connection

Design: 32BD3109A

Marks:

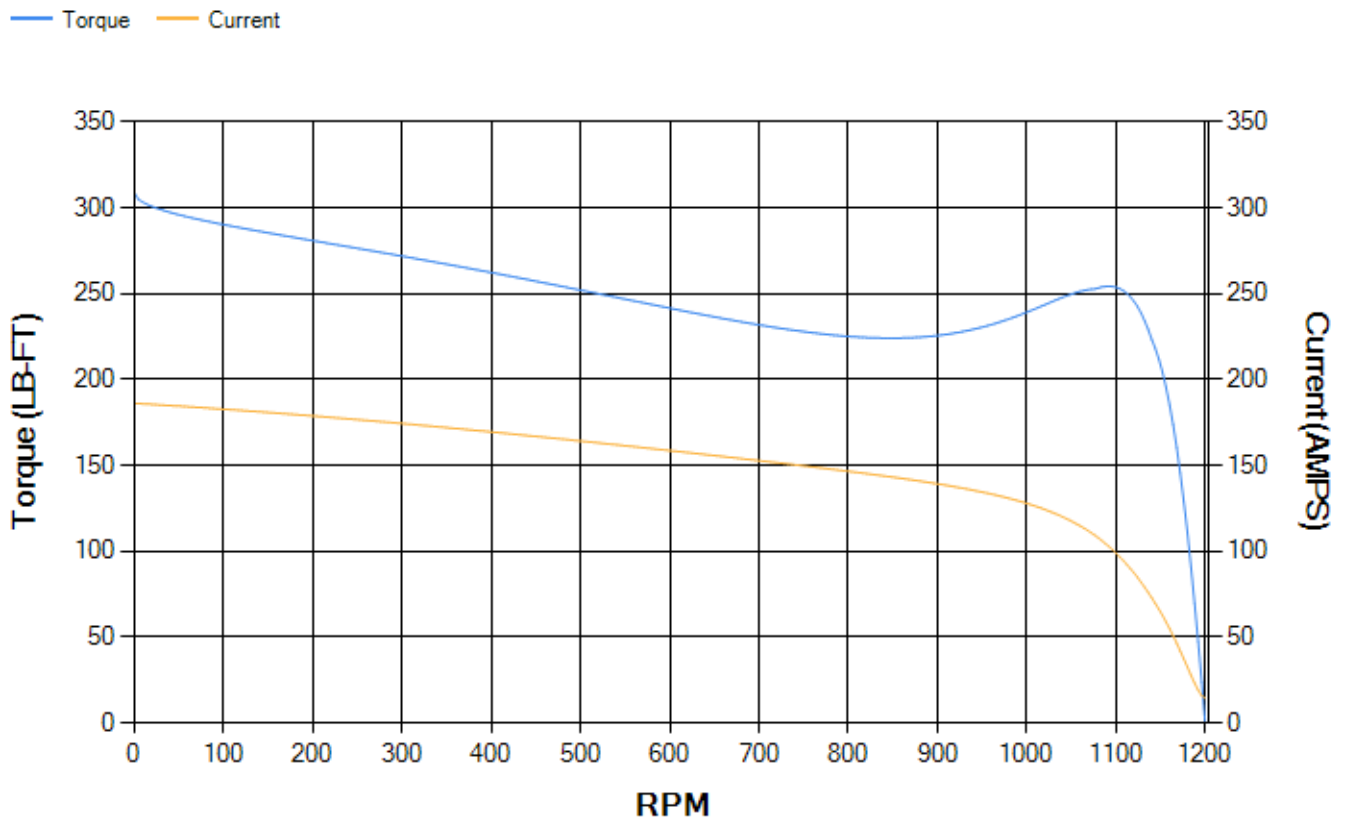
LOAD %	125.0	115.0	100.0	75.0	50.0	25.0	0.0
% EFF	92.04	92.44	93.13	93.37	92.95	89.66	0.00
% PF	79.32	78.75	77.23	72.11	61.32	39.77	3.96
AMPS	40.06	36.96	32.51	26.06	20.52	16.41	14.45

TORQ(FL)#FT	111.74	TORQ(LR)%FL	276.18	TORQ(BD)%FL	225.32
AMPS(LR)	186.27	PF AT START	0.46		

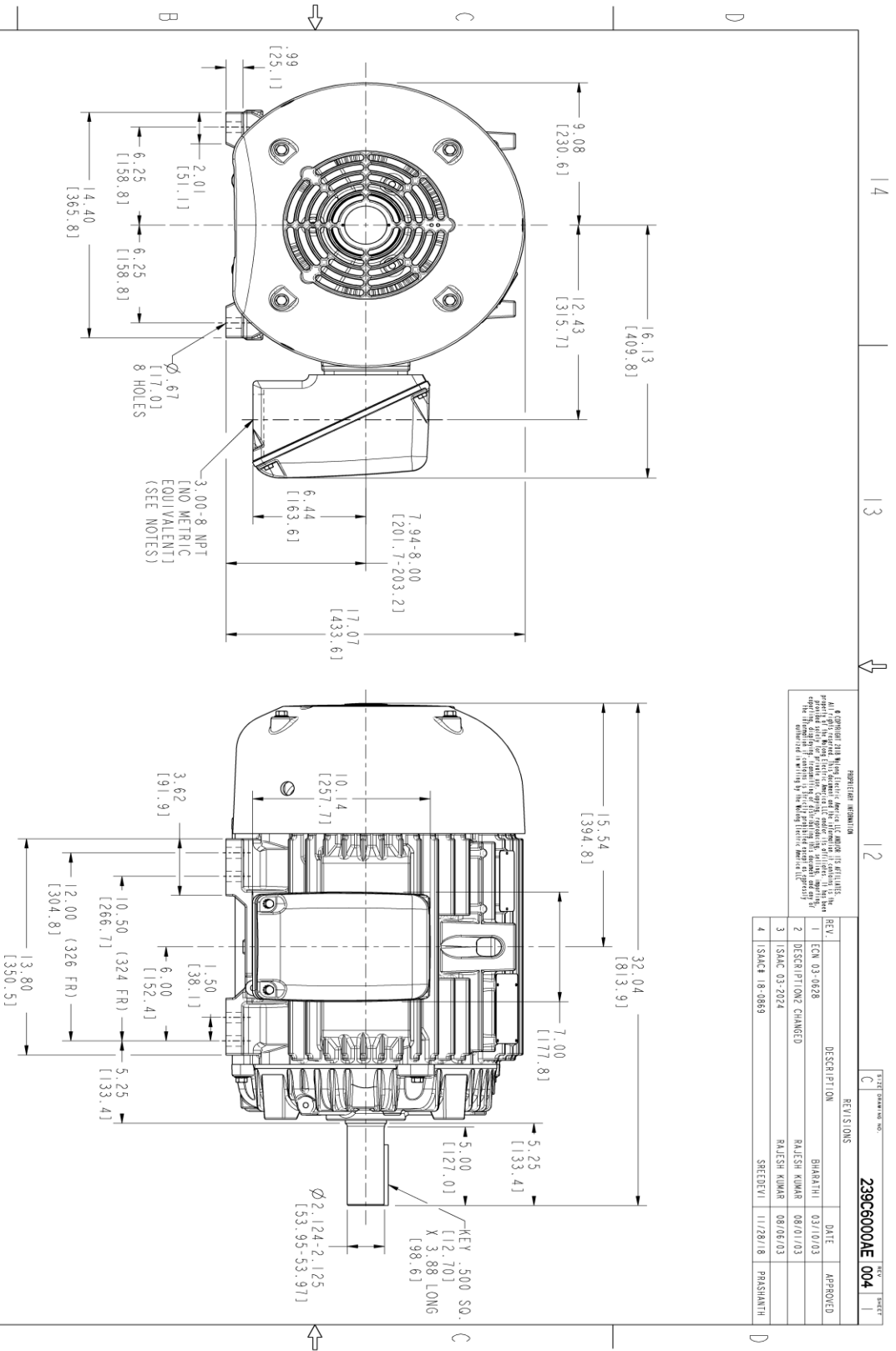
This motor is capable of two cold or one hot start with a maximum connected load inertia of 2417 Lb-Ft Sq (101.76 Kg-meter Sq)at 100% voltage, where the load torque varies with the square of the speed. Acceleration time with maximum inertia and the above load type is 43 seconds. Safe stall time at 100% voltage is 74 seconds cold, 52 seconds hot. Rotor inertia is 12.67 Lb-Ft Sq (0.53 Kg-meter Sq).

Open Circuit A-C:	0.267	Short Circuit D-C:	0.021
Short Circuit A-C:	0.016	X/R Ratio:	7.955
Stator Slots:	54	Rotor Slots:	40

Speed Torque Current Curve (First Connection, First Speed)



Marks:



REGISTRATION INFORMATION

© Copyright 2018 Wabtec Electric America LLC and/or its affiliates. All rights reserved. This drawing is the property of Wabtec Electric America LLC and its affiliates. It is intended for use only for the specific project and product identified herein. It is not to be used for any other purpose without the written consent of Wabtec Electric America LLC. The information contained herein is confidential and its disclosure to any other party is prohibited without the written consent of Wabtec Electric America LLC.

REV.	DESCRIPTION	DATE	APPROVED
1	ECN 03-0628	03/10/03	BHARATHI
2	DESCRIPTION CHANGED	08/01/03	RAJESH KUMAR
3	ISAC 03-2024	08/06/03	RAJESH KUMAR
4	ISAC# 18-0869	11/28/18	PRAASHANTH

REV. NO. 004

DATE 03/10/03

APPROVED

NOTES :

- CONDUIT BOX MAY BE PLACED WITH THE ENTRANCE DOWN, UP OR ON EITHER SIDE.
- F-1 ASM AS SHOWN.
- F-2 ASM HAS CONDUIT BOX ON OPPOSITE SIDE.
- BRACKETED DIMENSIONS ARE METRIC (MILLIMETERS).



SIGNATURES	DATE
MODEL: MGRANU	03/13/02
DESIGN: MANIVANNAN	03/13/02
ISSUED: MGRANU	03/13/02
QUALITY:	
SCALE: 0.250	

GE INDUSTRIAL MOTORS
a Wabtec company

OUTLINE ASSEMBLY

324/326T TEFC
346 CU. IN. CONDUIT BOX

239C6000AE

REV. NO. 004

SHEET 1 OF 1

Marks:

Connection Diagram
GEM2034E-FIG7



End shield Assembly		
Part Description	DE Side Part#	ODE Side Part#
End Shield	115E4200AA1	115E4200LA1
Bearing	235A2609AA01	235A2609AA01
Slinger/Inproseal	149C4399G04	149C4399G04

Fan & Fan Cover Assembly	
Part Description	Part#
Fan	159C7000G01
Fan Cover	128D6800AA1

Conduit & Accessories Box Assembly	
Part Description	Part#
Conduit Box	149C4429AA2

Mechanical Accessories	
Part Description	Part#
Brake	
Tachometer	

