

# Product Information Packet

May 18, 2018

Data shown is for the current revision model #. Ensure your nameplate model # matches.

<b>Model Number:</b>	<b>5KGS364SAA320D1</b>
<b>Catalog Number:</b>	<b>M8982</b>
<b>Instruction Manual:</b>	GEI-56128
<b>Connection Diagram:</b>	GEM2034E-FIG7
<b>Outline Drawing:</b>	239C6200AA

Accessory Connection Diagrams			
<b>Bearing Thermocouple:</b>	None	<b>Heater:</b>	None
<b>RTD:</b>	None	<b>Thermistor:</b>	None
<b>Thermostat:</b>	3027JE-2A	<b>Winding Thermocouple:</b>	None
<b>Bearing RTD:</b>	None		

## Table of Contents

Specification	01
Performance Characteristics	02
Outline Drawing	03
Connection Drawing(s)	04
Spare parts	05



**Marks:**

<b>MODEL NUMBER:</b>	<b>5KGS364SAA320D1</b>	<b>Estimated Weight:</b>	1020 Lbs
<b>Outline Drawing:</b>	239C6200AA	<b>Time Rating:</b>	CONT
<b>Connection Diagram:</b>	GEM2034E-FIG7	<b>Enclosure:</b>	TEFC
<b>Instruction Book:</b>	GEI-56128	<b>Encl Construction:</b>	X\$D
<b>Design Code:</b>	36BD3092A	<b>Ambient Max(°C):</b>	40
<b>Type:</b>	KGS	<b>Alt Ambient Max(°C):</b>	--
<b>Frame:</b>	364T	<b>Insulation Class:</b>	H
<b>Phases:</b>	3	<b>NEMA Design:</b>	C
<b>Poles:</b>	6	<b>Nominal Efficiency:</b>	94.1 %
<b>Output Power:</b>	40HP 29.6KW	<b>Guaranteed Efficiency:</b>	93.6 %
<b>RPM:</b>	1185	<b>3/4 Load Efficiency:</b>	94.5 %
<b>Voltage:</b>	460	<b>KVA Code:</b>	G
<b>Hertz:</b>	60	<b>Max KVAR:</b>	14.1
<b>Amps - FL:</b>	48.5	<b>Power Factor:</b>	82.0
<b>Service Factor:</b>	1.15	<b>Bearing - DE:</b>	NU 314
<b>Alt Service Factor:</b>	--	<b>Bearing - ODE:</b>	6314ZC3

Enclosure is Totally Enclosed Fan-Cooled

**Stamped Nameplate Notes:**

ROLLER BEARING - FOR BELTED LOAD ONLY  
 THERMOSTAT LEADS TB1-TB2 TRIP  
 STAMP NP249A5564P051 AS BELOW:  
 MODEL:5KGS364SAA320D1 S/N: XXX  
 CSA CERTIFIED CSA09.2216219 FOR EX NA IIC 200 C GC  
 CL 1 ZONE2 AEX NA IIC 200C;CL 1 DIV2 GRP ABCD 200C  
 IN -40C <= AMB <= 40C, 1.0 SF ON SINE-WAVE PWR  
 SURF TEMP 200C AT 1.15SF ON SINE-WAVE PWR  
 OR 200C VT OR 215C CT OR -- CHP PWM CONTROL  
 ALTERNATE RATING FOR PWM CONTROL 1.0SF 40C AMB  
 VT 0-60 HZ, CT 3-60 HZ, CHP -- HZ.  
 400V, 50HZ 54.8 AMPS AT 1.0SF

**Additional Information:**

6P - T EXTN  
 C/BOX 346 CU IN - 3.00" NPT  
 OIL RESISTANT SLEEVING ON LEADS  
 B5F4C4 HIGH FATIGUE STEEL AISI 4142 SHAFT MATERIAL  
 N.C. TRIP TSTAT LDS TO MAIN CONDUIT BOX  
 F1 MOUNTING

**Performance Characteristics**

1st Winding 1st Connection

**Design: 36BD3092A**

**Marks:**

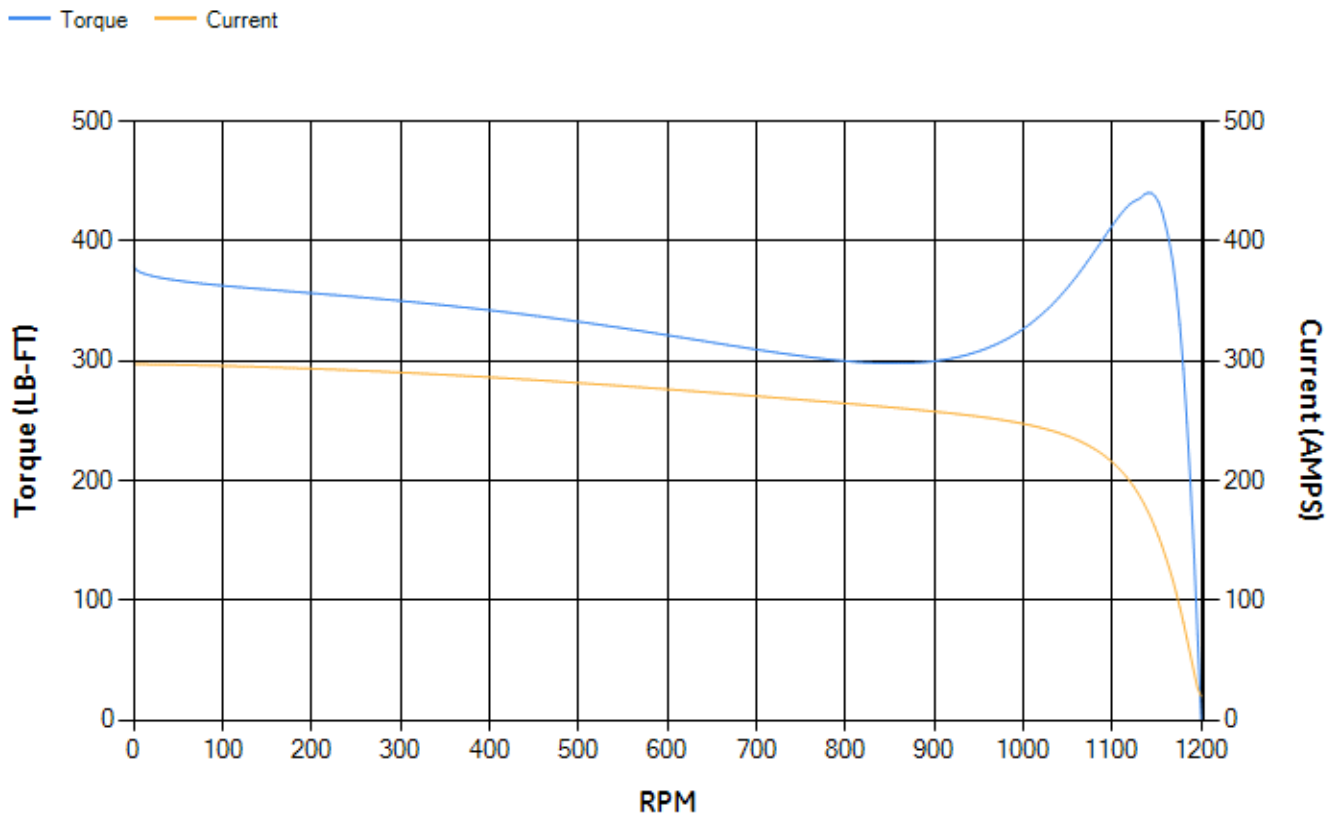
LOAD %	125.0	115.0	100.0	75.0	50.0	25.0	0.0
% EFF	93.39	93.7	94.28	94.45	94.15	91.49	0.00
% PF	84.21	83.6	82.14	77.41	67.1	44.65	3.55
AMPS	59.5	54.96	48.24	38.4	29.63	22.91	19.69

<b>TORQ(FL)#FT</b>	177.02	<b>TORQ(LR)%FL</b>	214.16	<b>TORQ(BD)%FL</b>	245.25
<b>AMPS(LR)</b>	297.22	<b>PF AT START</b>	0.44		

This motor is capable of two cold or one hot start with a maximum connected load inertia of 3717 Lb-Ft Sq (156.49 Kg-meter Sq)at 100% voltage, where the load torque varies with the square of the speed. Acceleration time with maximum inertia and the above load type is 52 seconds. Safe stall time at 100% voltage is 95 seconds cold, 62 seconds hot. Rotor inertia is 22.51 Lb-Ft Sq (0.95 Kg-meter Sq).

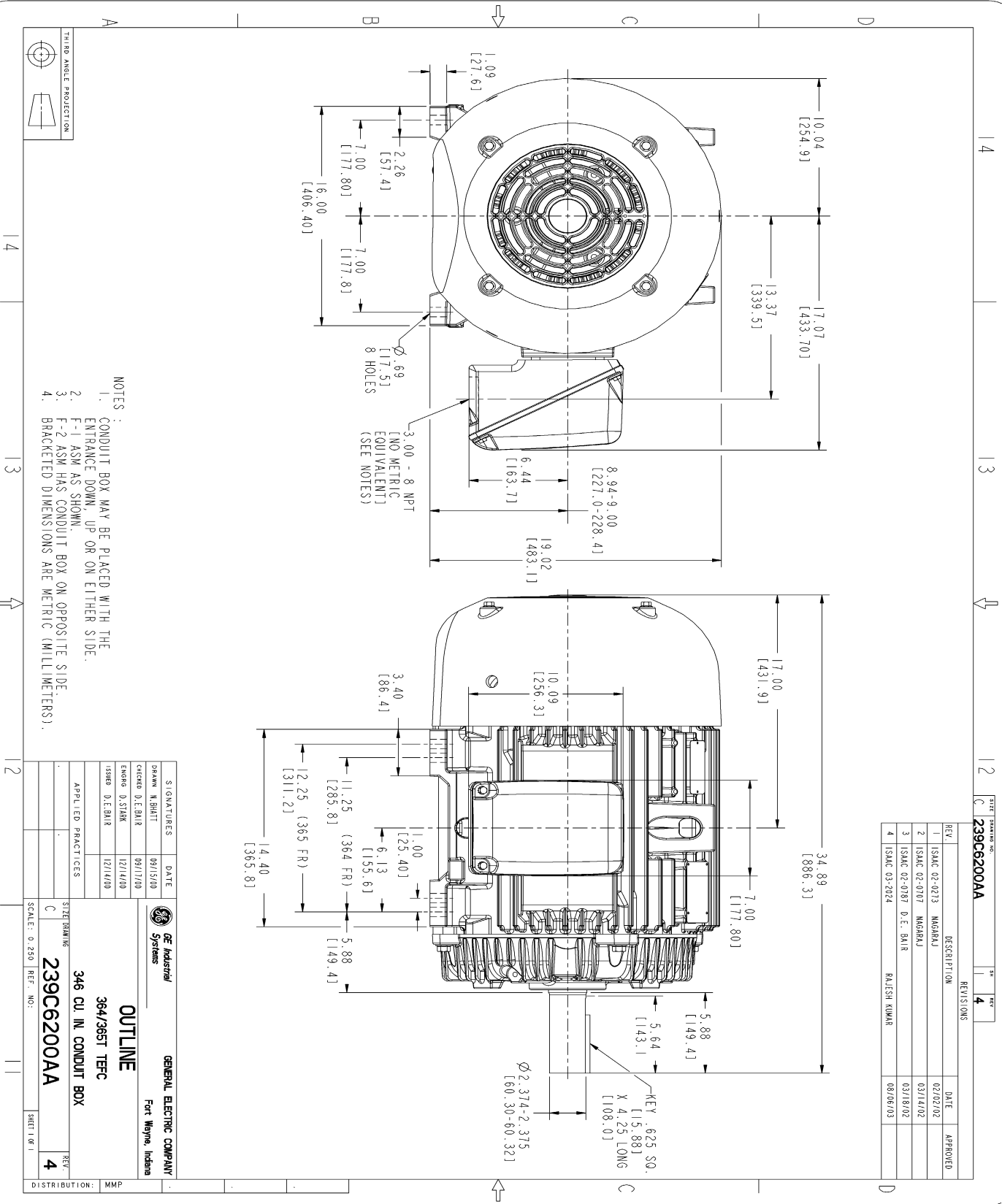
<b>Open Circuit A-C:</b>	0.544	<b>Short Circuit D-C:</b>	0.015
<b>Short Circuit A-C:</b>	0.026	<b>X/R Ratio:</b>	5.682
<b>Stator Slots:</b>	72	<b>Rotor Slots:</b>	58

**Speed Torque Current Curve (First Connection, First Speed)**



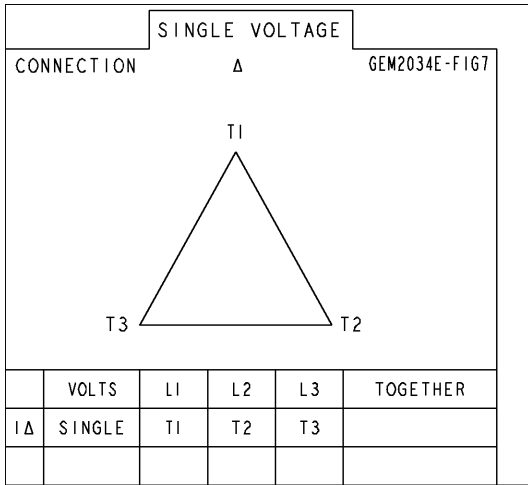
NAME: 103016807 OBJECT: 239C6200AA DATE: 07-Aug-03 23:32:55

Marks:



Marks:

**Connection Diagram**  
**GEM2034E-FIG7**



**Thermostat Connection**  
**3027JE-2A**



End shield Assembly		
Part Description	DE Side Part#	ODE Side Part#
End Shield	115E4250AA1	115E4250LK1
Bearing	235A2524AA01	235A2616AA01
Slinger/Inproseal	149C4399G05	149C4399G05

Fan & Fan Cover Assembly	
Part Description	Part#
Fan	159C7100G01
Fan Cover	128D6810AA1

Conduit & Accessories Box Assembly	
Part Description	Part#
Conduit Box	149C4429AA2

Mechanical Accessories	
Part Description	Part#
Brake	
Tachometer	