



GE INDUSTRIAL MOTORS
a **WOLONG** company

Product Technical Information

April 6, 2023

Data shown is for the current revision model #. Ensure your nameplate model # matches.

Model Number:	5KGS445SAA320D1
Catalog Number:	M8987
Instruction Manual:	GEI-56128
Connection Diagram:	GEM2034E-FIG7
Outline Drawing:	239C6600AA

Accessory Connection Diagrams

Bearing Thermocouple:	None	Heater:	None
RTD:	None	Thermistor:	None
Thermostat:	3027JE-2A	Winding Thermocouple:	None
Bearing RTD:	None		

Table of Contents

Specification	01
Performance Characteristics	02
Outline Drawing	03
Connection Drawing(s)	04
Spare parts	05

Marks:

MODEL NUMBER:	5KGS445SAA320D1	Estimated Weight:	2060 Lbs
Outline Drawing:	239C6600AA	Time Rating:	CONT
Connection Diagram:	GEM2034E-FIG7	Enclosure:	TEFC
Instruction Book:	GEI-56128	Encl Construction:	X\$D
Design Code:	44BD3083A	Ambient Max(°C):	40
Type:	KGS	Alt Ambient Max(°C):	--
Frame:	445T	Insulation Class:	H
Phases:	3	NEMA Design:	C
Poles:	6	Nominal Efficiency:	95.0 %
Output Power:	125HP 92.5KW	Guaranteed Efficiency:	94.5 %
RPM:	1190	3/4 Load Efficiency:	--
Voltage:	460	KVA Code:	G
Hertz:	60	Max KVAR:	50.4
Amps - FL:	156.0	Power Factor:	79.0
Service Factor:	1.15	Bearing - DE:	NU 318
Alt Service Factor:	--	Bearing - ODE:	6318ZC3

Enclosure is Totally Enclosed Fan-Cooled

Stamped Nameplate Notes:

400V, 50HZ 177.0 AMPS AT 1.0SF
 ROLLER BEARING - FOR BELTED LOAD ONLY
 THERMOSTAT LEADS TB1-TB2 TRIP
 STAMP NP249A5564P051 AS BELOW:
 MODEL:5KGS445SAA320D1 S/N: XXX
 CSA CERTIFIED CSA09.2216219 FOR EX NA IIC 200 C GC
 CL 1 ZONE2 AEX NA IIC 200C;CL 1 DIV2 GRP ABCD 200C
 IN -40C <= AMB <= 40C, 1.0 SF ON SINE-WAVE PWR
 SURF TEMP 200C AT 1.15SF ON SINE-WAVE PWR
 OR 200C VT OR 230C CT OR ---C CHP PWM CONTROL
 ALTERNATE RATING FOR PWM CONTROL 1.0SF 40C AMB
 VT 0 - 60 HZ, CT 20-60 HZ, CHP -- HZ.



Additional Information:

6P - T EXTN
700 CU IN - 3.00" NPT
OIL RESISTANT SLEEVING ON LEADS
B5F4C4 HIGH FATIGUE STEEL AISI 4142 SHAFT MATERIAL
N.C. TRIP TSTAT LDS TO MAIN CONDUIT BOX
F1 MOUNTING



Performance Characteristics

1st Winding 1st Connection

Design: 44BD3083A

Marks:

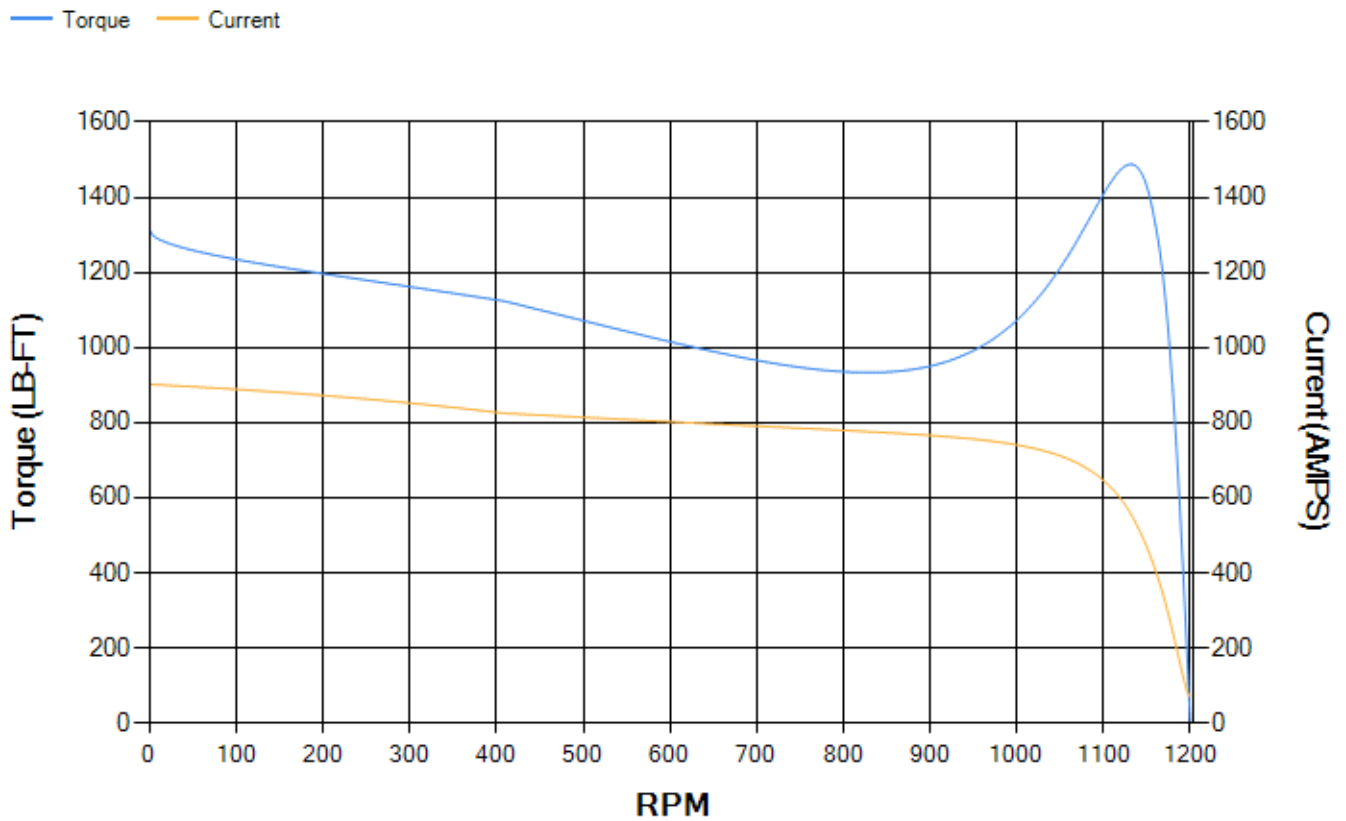
LOAD %	125.0	115.0	100.0	75.0	50.0	25.0	0.0
% EFF	94.59	94.8	95.24	95.19	94.7	91.93	0.00
% PF	81.76	80.99	79.23	73.78	62.58	40.2	3.14
AMPS	189.09	175.22	155.04	124.93	98.71	79.14	70.34

TORQ(FL)#FT	552.53	TORQ(LR)%FL	237.59	TORQ(BD)%FL	268.71
AMPS(LR)	901.97	PF AT START	0.41		

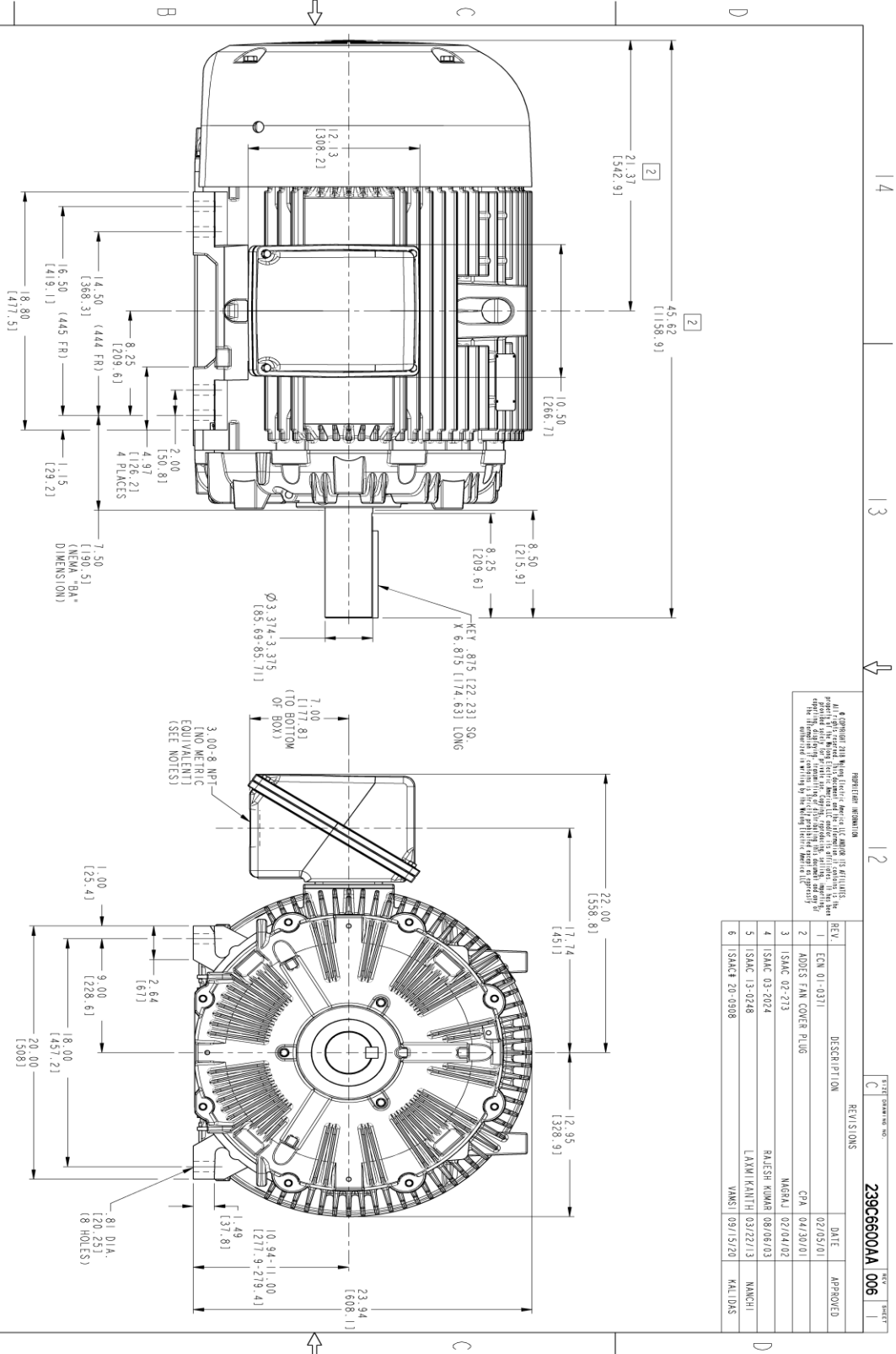
This motor is capable of two cold or one hot start with a maximum connected load inertia of 6541 Lb-Ft Sq (275.38 Kg-meter Sq)at 100% voltage, where the load torque varies with the square of the speed. Acceleration time with maximum inertia and the above load type is 28 seconds. Safe stall time at 100% voltage is 58 seconds cold, 33 seconds hot. Rotor inertia is 102.31 Lb-Ft Sq (4.31 Kg-meter Sq).

Open Circuit A-C:	0.53	Short Circuit D-C:	0.027
Short Circuit A-C:	0.032	X/R Ratio:	10.035
Stator Slots:	72	Rotor Slots:	58

Speed Torque Current Curve (First Connection, First Speed)



Marks:



PROPRIETARY INFORMATION
 All rights reserved. This drawing is the property of GE Industrial Motors. It is not to be reproduced, copied, or disseminated in any form without the written permission of GE Industrial Motors. The information contained herein is confidential and intended for the use of the recipient only.

REV.	DESCRIPTION	DATE	APPROVED
1	ECO 01-0311	02/05/01	
2	ADDS FAN COVER PLUG	04/30/01	
3	ISAC 02-213	MGRAL 02/04/02	
4	ISAC 03-2024	RAJESH KUMAR 08/06/03	
5	ISAC 13-0248	LAXMI KANTHI 03/22/13	
6	ISAC# 20-0308	YANLI 09/15/20	KALIDAS

- NOTES:
- CONDUIT BOX MAY BE PLACED WITH THE ENTRANCE DOWN, UP OR ON EITHER SIDE.
 - F-1 ASSEMBLY AS SHOWN (B3L).
 - ALL DIMENSIONS ARE IN INCHES. BRACKETED DIMENSIONS ARE METRIC (MILLIMETERS).



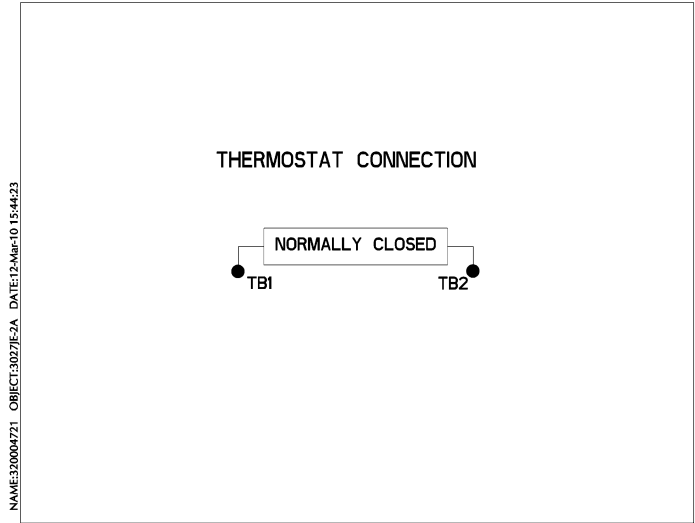
SIGNATURES	DATE	<p>GE INDUSTRIAL MOTORS a WOLSKEL company</p> <p>OUTLINE 444/445T TEFC 700 CU. IN. CONDUIT BOX</p>
MODEL	04/17/00	
DESIGNED BY	04/17/00	
CHECKED BY	04/17/00	
ISSUED BY	04/17/00	SCALE: 0.200 REF. NO.: SHEET 1 OF 1

Marks:

Connection Diagram
GEM2034E-FIG7



Thermostat Connection
3027JE-2A



End shield Assembly		
Part Description	DE Side Part#	ODE Side Part#
End Shield	115E4355AA1	115E4355LL1
Bearing	235A2519AA01	235A2514AG01
Slinger/Inproseal	149C4399G07	149C4399G07

Fan & Fan Cover Assembly	
Part Description	Part#
Fan	159C7100G03
Fan Cover	128D6841AA1

Conduit & Accessories Box Assembly	
Part Description	Part#
Conduit Box	118D4408AD2

Mechanical Accessories	
Part Description	Part#
Brake	
Tachometer	

